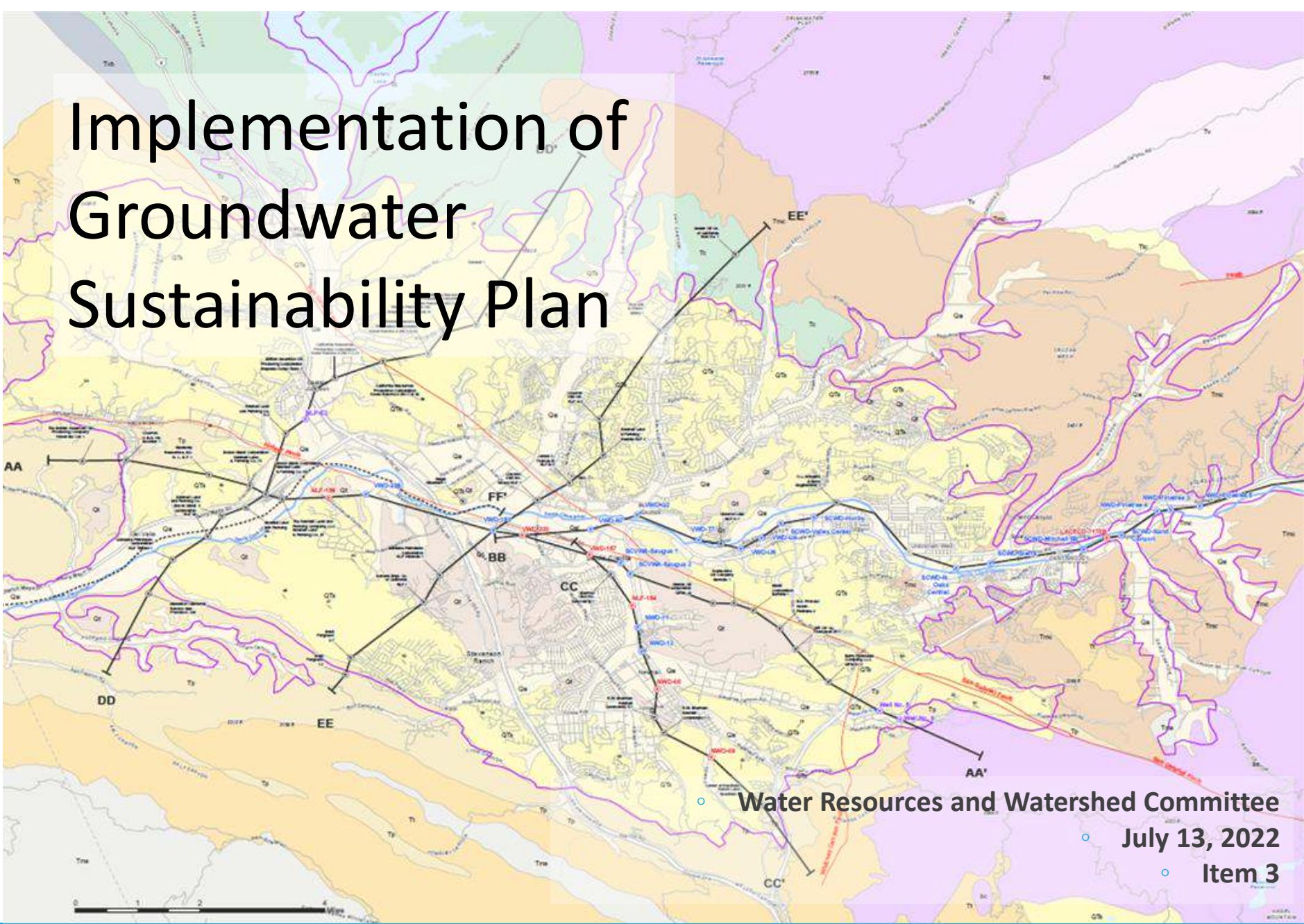


Implementation of Groundwater Sustainability Plan



Water Resources and Watershed Committee

July 13, 2022

Item 3

Implementation of Groundwater Sustainability Plan

- GSP Development took place over many years
- The GSP found the basin has been managed without undesirable results in the past, and future basin management is unlikely to create undesirable results
 - The basin is expected to remain in balance
 - Specialized monitoring is taking place, or planned, and if data suggests the potential for undesirable results, the basin can be managed to avoid or minimize undesirable results
- Maintaining sustainability requires supplemental monitoring and filling data gaps.
 - The State's GSP regulations require the GSP evaluate data gaps and provide a plan to fill data gaps over time.

General Approach for GSP Implementation

- Outreach Contract
 - Domestic well monitoring (to help fill data gaps)
 - Groundwater extraction reporting (wells > 2 acre feet per year)
 - Best management practices
- Groundwater Dependent Ecosystems Contracts
 - Evaluation of local conditions
- Technical Support Contract
 - Supports above contracts
 - Supports specialized monitoring

Technical Consultant Scope - Task 1

- Task 1- Establishment of Ongoing Monitoring Program and Protocols
- Develop protocols and regularly acquire data with a focus on consistency, efficiency, and minimizing potential for data loss, duplication, or unintentional manipulation due to any format or platform discrepancies.

Groundwater Elevations (SCV Water, WWD 36, Flood Control District, etc.)	Surface Water Flow Gauges (USGS, LA County)	Water Quality (routine data, salt and nutrient management plan, etc.)
Groundwater Extraction (existing and future)	Land Surface Elevations (benchmark surveys, satellite methods, etc)	Ground Dependent Ecosystems

- Provide data to data management system

Task 1 Consultant Budget

Tasks	Labor Hours	Total
Task 1 - Establish Ongoing Monitoring Program and Protocols	405	\$74,000
Subtask 1.1 - Groundwater Level, Surface Water Flow, Groundwater and Surface Water Quality Monitoring Protocols	105	\$20,400
Subtask 1.2 - Land Subsidence Monitoring Protocols	55	\$9,900
Subtask 1.3 - Wellhead Reference Point Elevation Survey	70	\$14,900
Subtask 1.4 - Upland (Potential) GDE Verification	40	\$7,000
Subtask 1.5 - Domestic Water Quality Monitoring Program	75	\$11,800
Subtask 1.6 - Non-De Minimis Metering and Reporting Program	55	\$10,000

Technical Consultant Scope - Task 2

- Task 2 – Perform ongoing monitoring, reporting, and outreach
 - 2.1 Prepare standard sets of reports (quarterly, or more frequently in summer for GDE wells)
 - Reports present data compared to minimum thresholds or GDE Triggers
 - Develop data management system to prepare most reports (minimize reinventing wheel each report)
 - 2.2 Domestic water quality and water level monitoring
 - Support outreach, facilitate well selection, collect monitoring data and prepare reports

Technical Consultant Scope

Task 2 - Continued

- Task 2 – Perform ongoing monitoring, reporting, and outreach
 - 2.3 Prepare Annual Report
 - Due April 1 each year for preceding calendar year
 - DWR also requires spring groundwater elevations of current year
 - Charts and graphs included (anticipate many of the same charts provided quarterly under task 2.1)
 - Groundwater elevation, extraction volumes, quality, surface water imports, land surface monitoring, groundwater storage
 - Discussion of basin trends, conditions, data relative to thresholds, etc.

Task 2 Consultant Budget

Tasks	Labor Hours	Total
Task 2 - Perform Ongoing Monitoring, Reporting, and Outreach	535	\$92,800
Subtask 2.1 - Ongoing Water Level, Surface Water Flow, and Land Surface Elevation Monitoring	180	\$31,300
Subtask 2.2 - Domestic Water Quality Monitoring	85	\$14,500
Subtask 2.3 - Prepare Annual Report	270	\$47,000

Technical Consultant Scope

Task 3

- Task 3 – Meetings and Project Management
 - Ongoing PM and meetings. Meetings are four SCV-GSA staff meetings, bi-monthly phone calls, two Board meetings.
 - Budget: \$33,200

Summary

- SGMA requires ongoing Implementation efforts covered by the proposed scope
 - Scope covers coordination/support for outreach and environmental components of SCV Water's work plan
 - Scope sets up monitoring efforts/protocols and initial efforts to address data gaps. (Over time, the monitoring and reporting effort will become more routine and efficient)
- Technical Consultant fee not to exceed \$200,000
- ***SCV Water still evaluating the best approach for the data management system during this first year.***
 - ***Subcontract, or bring it internally.***

Strategic Plan and Financial

- This work is consistent with Goals C and D of SCV Water's Strategic Plan
 - Goal C: Water Supply and Resource Sustainability
 - C.3.1- Leading implementation of SGMA
 - Goal D: Water Quality and Environmental Compliance
 - D.1.4-Communication regarding water quality trends and objectives
 - D.4.2-Work through GSA to protect watershed (salts and nutrients)
- Funding for the proposed scope of work is included in the FY 2022/23 Water Resources Department Operating Budget

Recommendation

That the Water Resources and Watershed Committee recommends that the Board of Directors authorize the General Manager to enter into an agreement with GSI Water Solutions, Inc. for the First Year of Groundwater Sustainability Plan Implementation.