



SCV Water Conservatory Garden

THE EDUCATION EXPERIENCE

Water Resources and Watershed Committee
May 13, 2020
Item No. 4

Pathway

- Process Review
- Design Concept Overview
- Completed/Ongoing Activities
- Financial Implications
- Recommendations

Process Overview



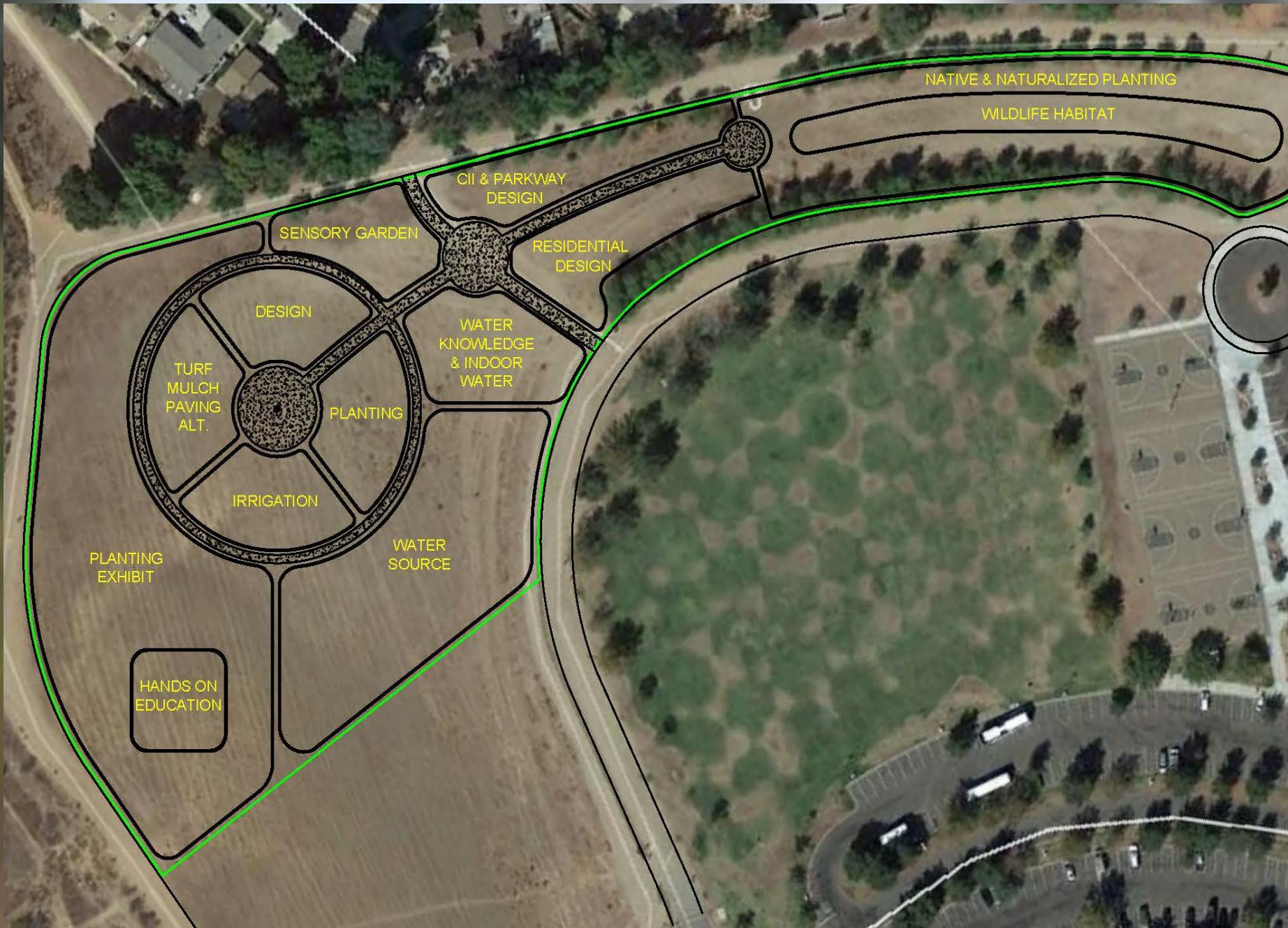
Groundwork

- Assessed Three Options
- Leveraged Legacy Work
- Incorporated Stakeholder Input
 - Committee Recommendation
 - Management Review
 - Water Conservation Educators

Option A

- Conceptual Garden Design
- Uses Current Location
- Improves Education Resources
- Limited Access
- Estimated Cost = \$3.5 Million





Option B

- Central Park Garden Design
- Maintains Current Facility
- Improves Education Resources
- Improved Access
- Estimated Cost = \$3.9 Million

Option C

- Scaled Garden & Pocket Parks
- Utilizes Current Area
- Reduces Size (~8 acres to <1acre)
- Modernizes Landscape and Irrigation Practices



Option C

- Scaled Garden & Pocket Parks
- Improves Education Resources
- Expands Access
- Estimated Cost = \$1.4 Million

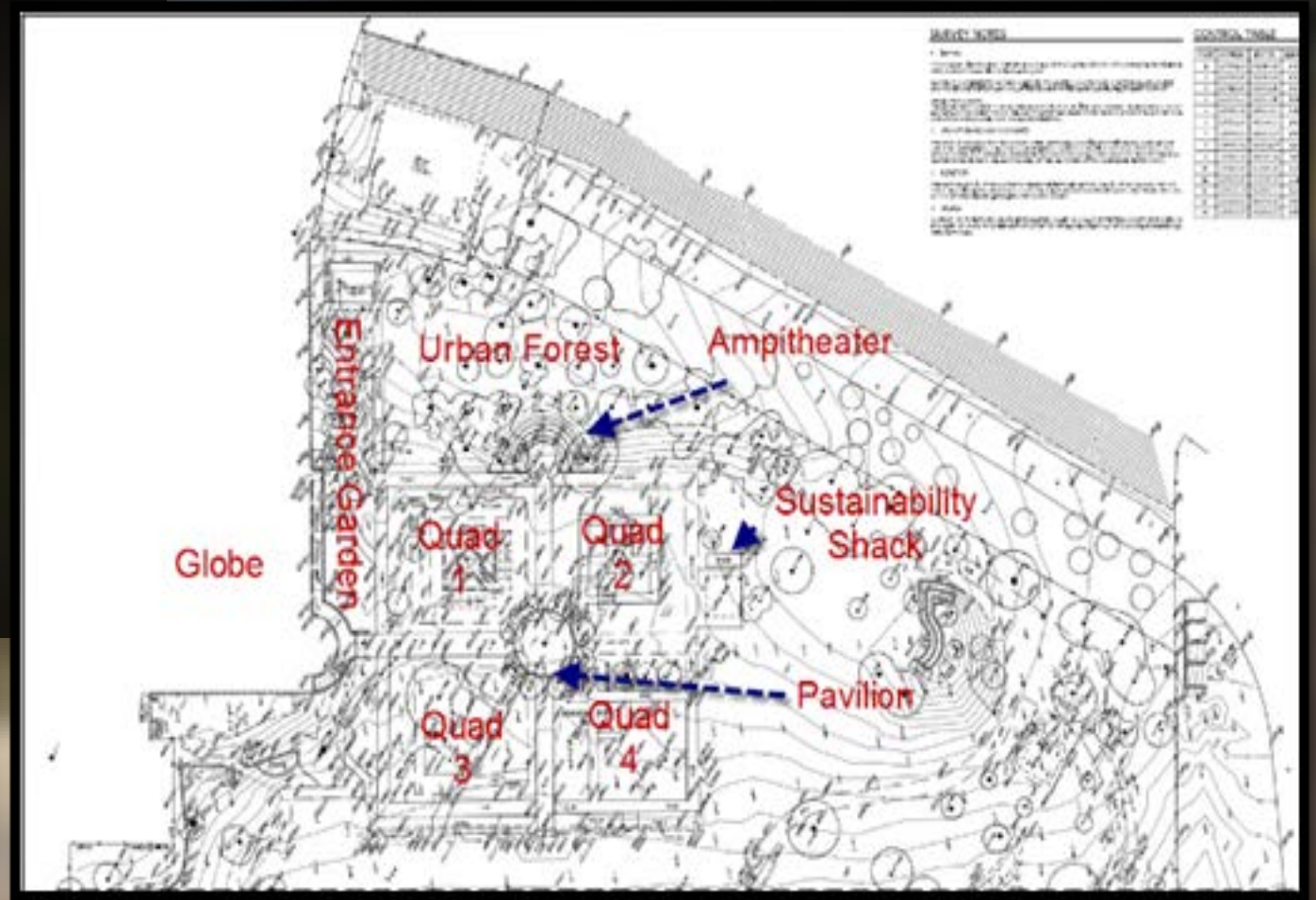


Design Concept Overview

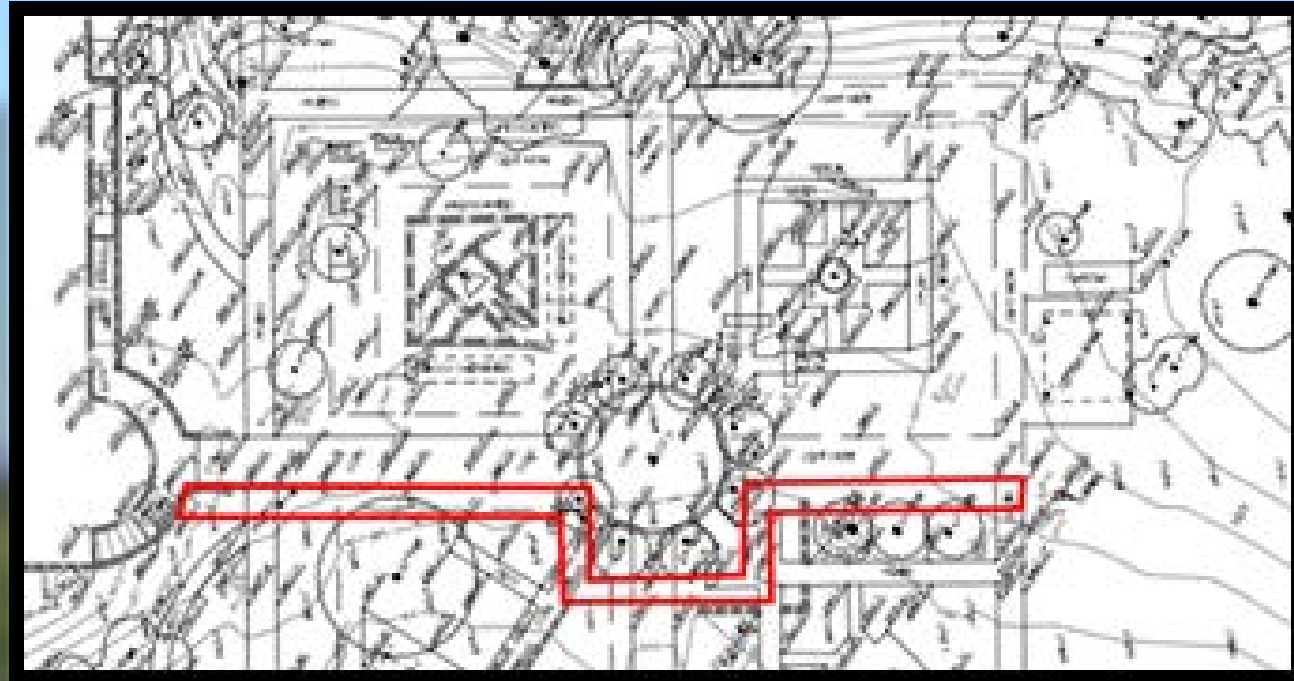
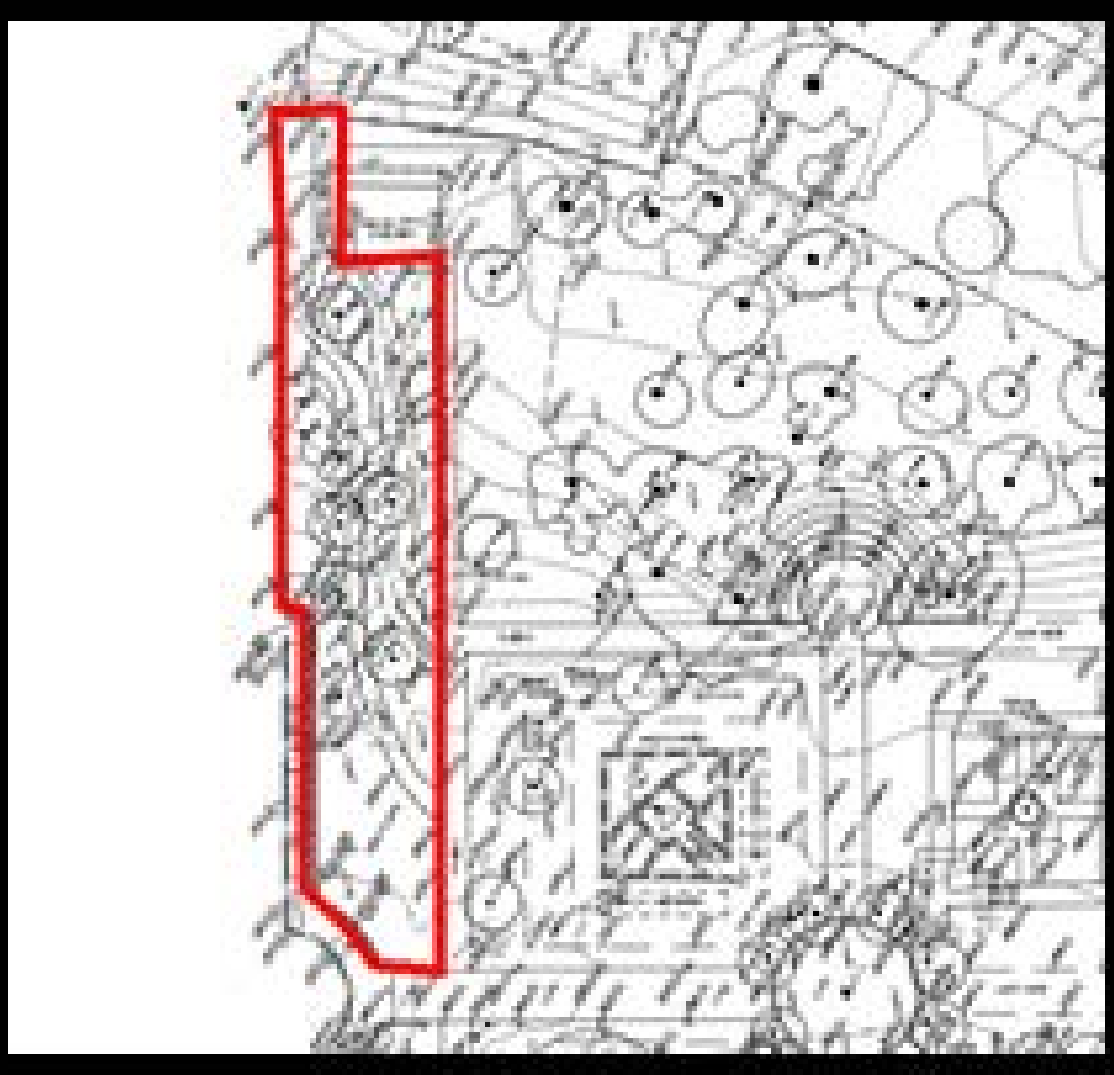


Design Concept

- Transformation – Garden & Exhibit Space
- Supports Child & Adult Education Programs
- Incorporated Stakeholder Input
 - Committee Recommendation
 - Management Review
 - Water Conservation Educators
 - Conservation Staff

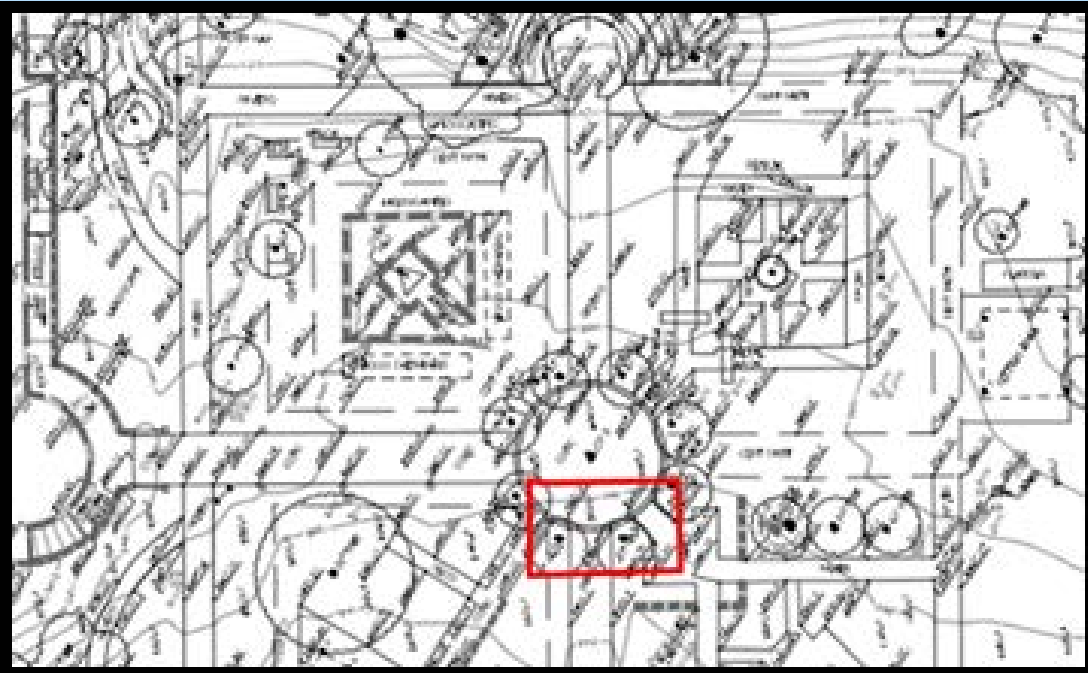


Entrance Garden



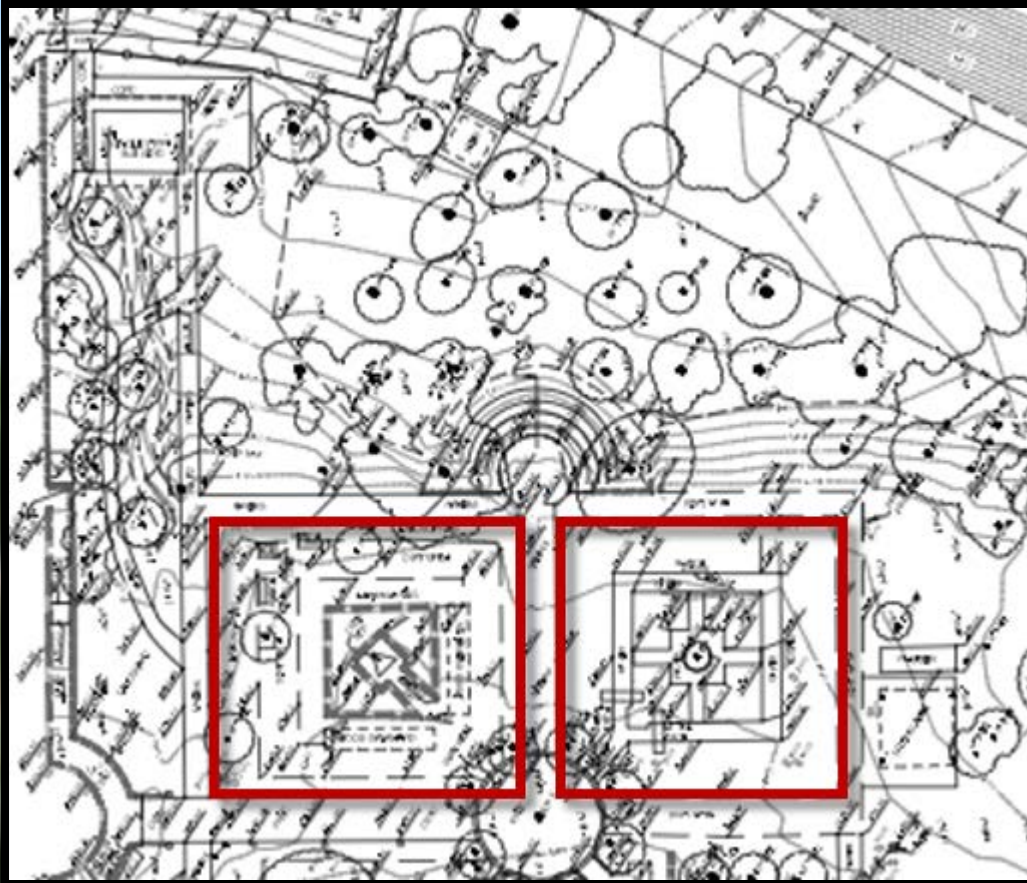
Pruning Garden

Garden Pavilion



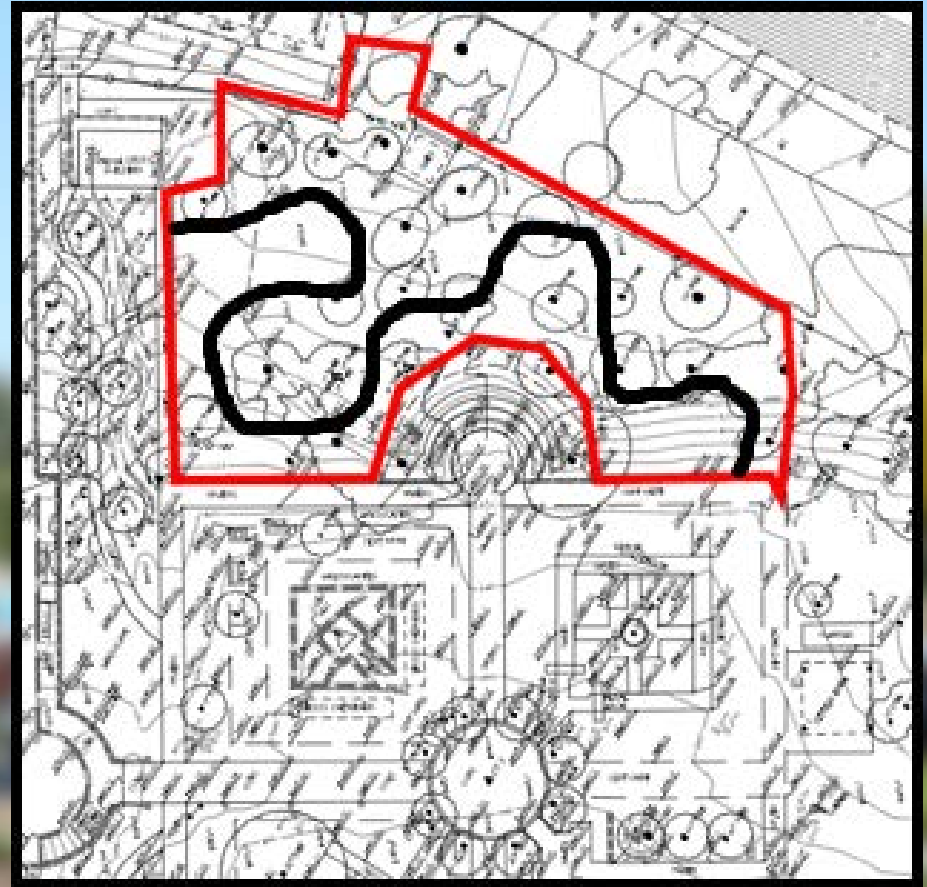
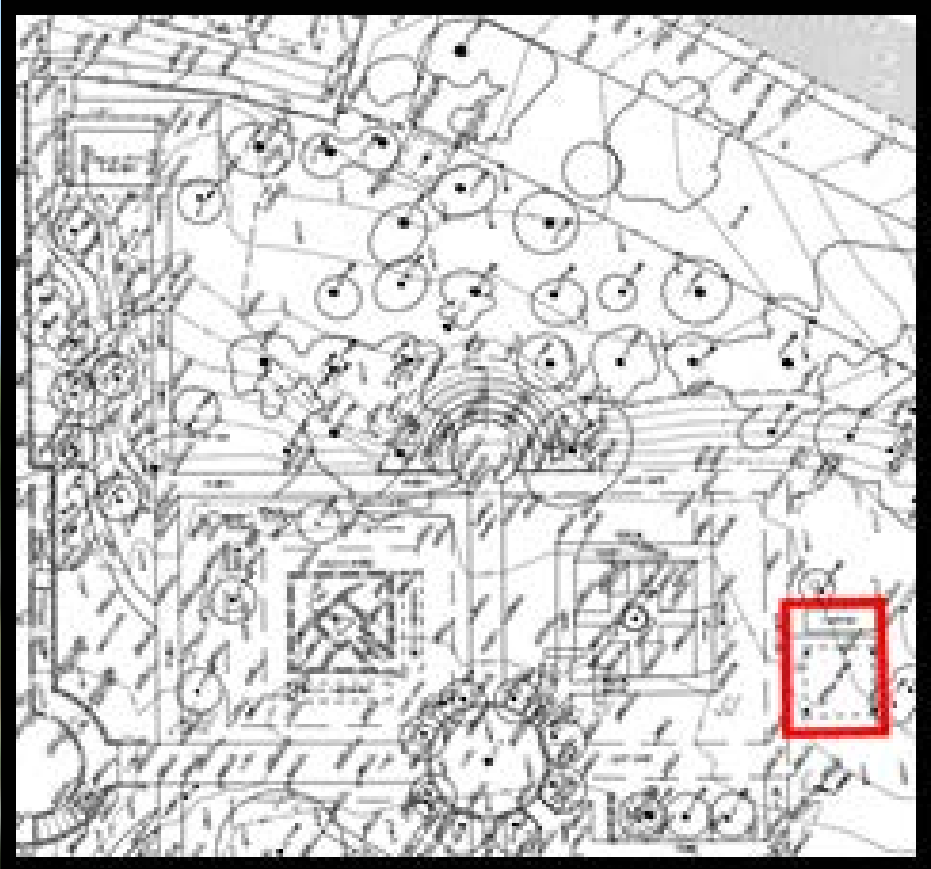
Outdoor
Classroom/Meeting Space

Exhibit Space



Permanent Shade Structures, Utilities, Exhibits

Sustainability Shack



Urban Forest

Completed and Ongoing Activities



Financial Implications



Financial Implications

Option A

\$3.5 Million

(Estimate)

Option B

\$3.9 Million

(Estimate)

Option C

\$1.4 Million

(Estimate)

Financial Implications

Option C – Updated Cost Estimates

Conservatory Garden Refurbishment (Cost Actuals and Estimates)

Garden Components	Actual or Estimate	FY 19/20	FY 20/21	FY 21/22	Total
Conservatory Garden					
Planning Support*	Actual	\$13,500.00	\$ 15,593.00		\$ 29,093.00
Site Design**	Actual		\$184,041.00		\$ 184,041.00
Site Construction	Estimate		\$300,000.00	\$ 1,000,000.00	\$ 1,300,000.00
Construction Management, Inspection, Engineering Services	Estimate		\$ 75,000.00	\$ 250,000.00	\$ 325,000.00
State Water Project Exhibit					
Exhibit Design	Actual	\$50,000.00	\$ 25,000.00		\$ 75,000.00
Fabrication Estimate	Estimate		\$ 75,000.00	\$ 75,000.00	\$ 150,000.00
Total		\$63,500.00	\$674,634.00	\$ 1,325,000.00	\$ 2,063,134.00

Notes:

*Includes ADA Compliance Audit, Site Topo Map, Storm Water Pollution Prevention Plan (SWPPP), and CEQA support.

**Budget for Conservatory Garden Refurbishment Engineering Design Services

Recommendations



Recommendations

- Feedback on Experience Concept
- Recommend Authorizing the General Manager to Enter in a Contract with Encompass Consultant Group, Inc. for Conservatory Garden Refurbishment Engineering Design Services.

Matthew S. Dickens, MPA
Resource Conservation Manager
SCV Water

mdickens@scvwa.org

