

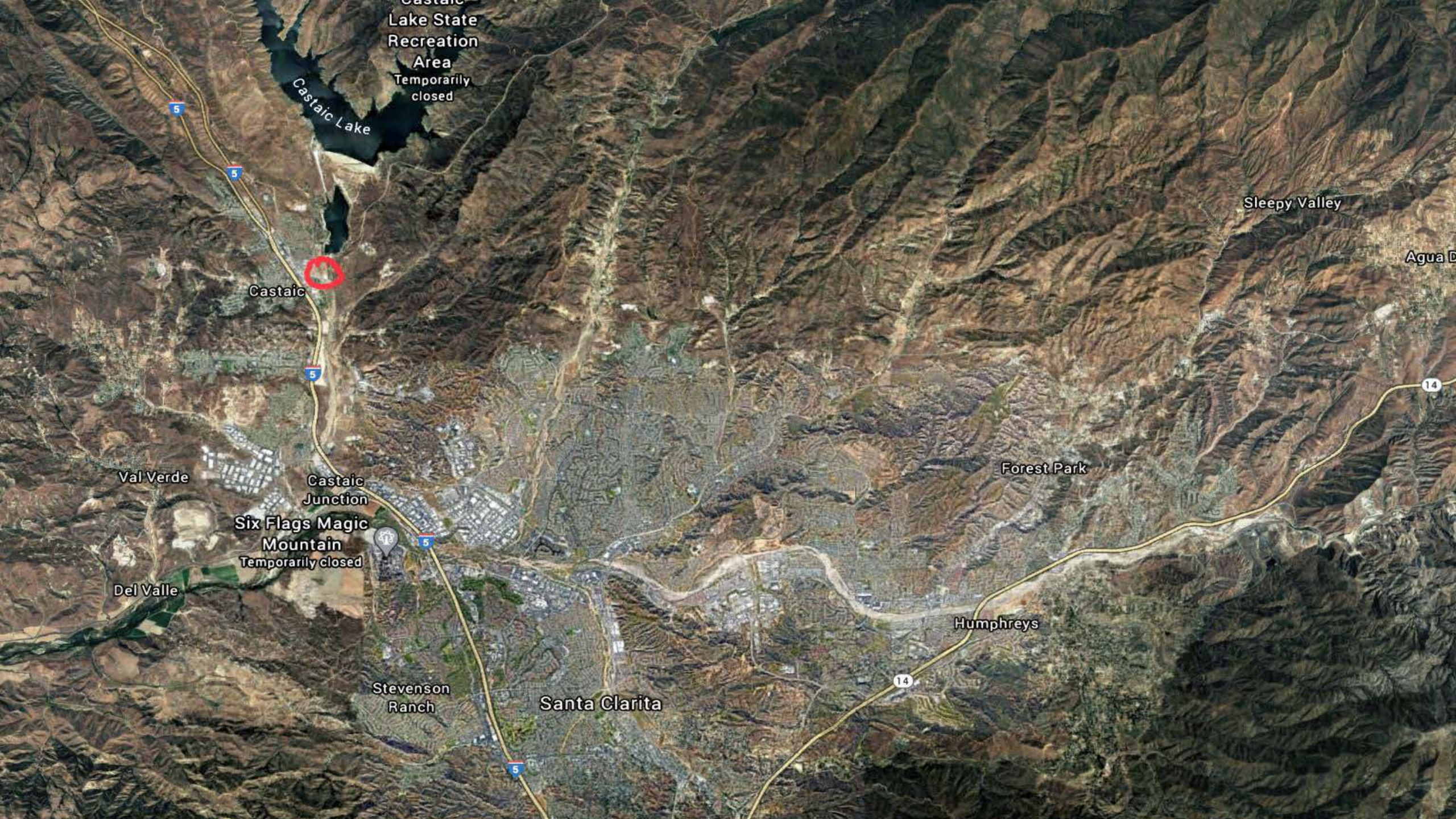


Status of Watershed Recharge Feasibility Study

Water Resources and Watershed Committee

May 13, 2020

Item 5.2



Castaic Lake State Recreation Area Temporarily closed

Castaic Lake

5

5

5

Castaic

5

Six Flags Magic Mountain Temporarily closed

Castaic Junction

Val Verde

Del Valle

Stevenson Ranch

Santa Clarita

14

Humphreys

Forest Park

Sleepy Valley

Agua Dulce

14



Castaic Lagoon

Lot B

Camping Lot A

Dave Bunch Dive Park

Department of Water Resources

Canyon Crosswinds RC Flying Field

Earl Schmidt Filtration Plant

Marple Canyon

5



Ridge Route Rd





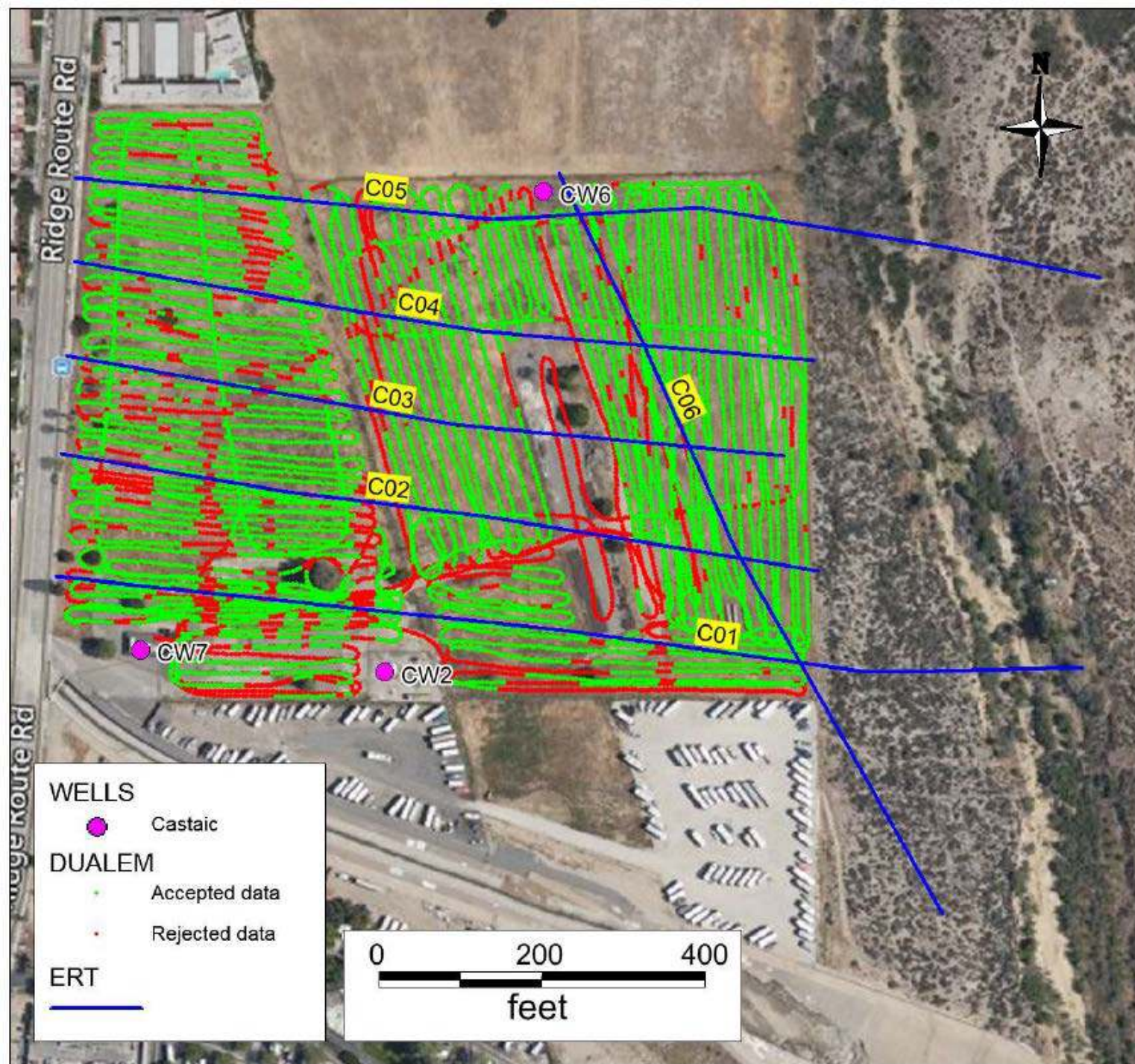








GEOPHYSICAL SURVEY AT THE OLD CASTAIC SCHOOL SITE DUALEM AND ERT



Section ID	Data	Length (ft)	Total datapoints	Accepted datapoints	Rejected data [%]	Residual
C01	March 4 th	1640	1289	1228	4.7	4.05
C02	March 2 nd	1394	503	491	2.4	4.62
C03	March 2 nd	1345	471	463	1.7	2.69
C04	March 3 rd	1345	566	557	1.6	2.47
C05	March 3 rd	1640	1472	1416	3.8	3.42
C06	March 4 th	1312	910	896	1.5	2.97

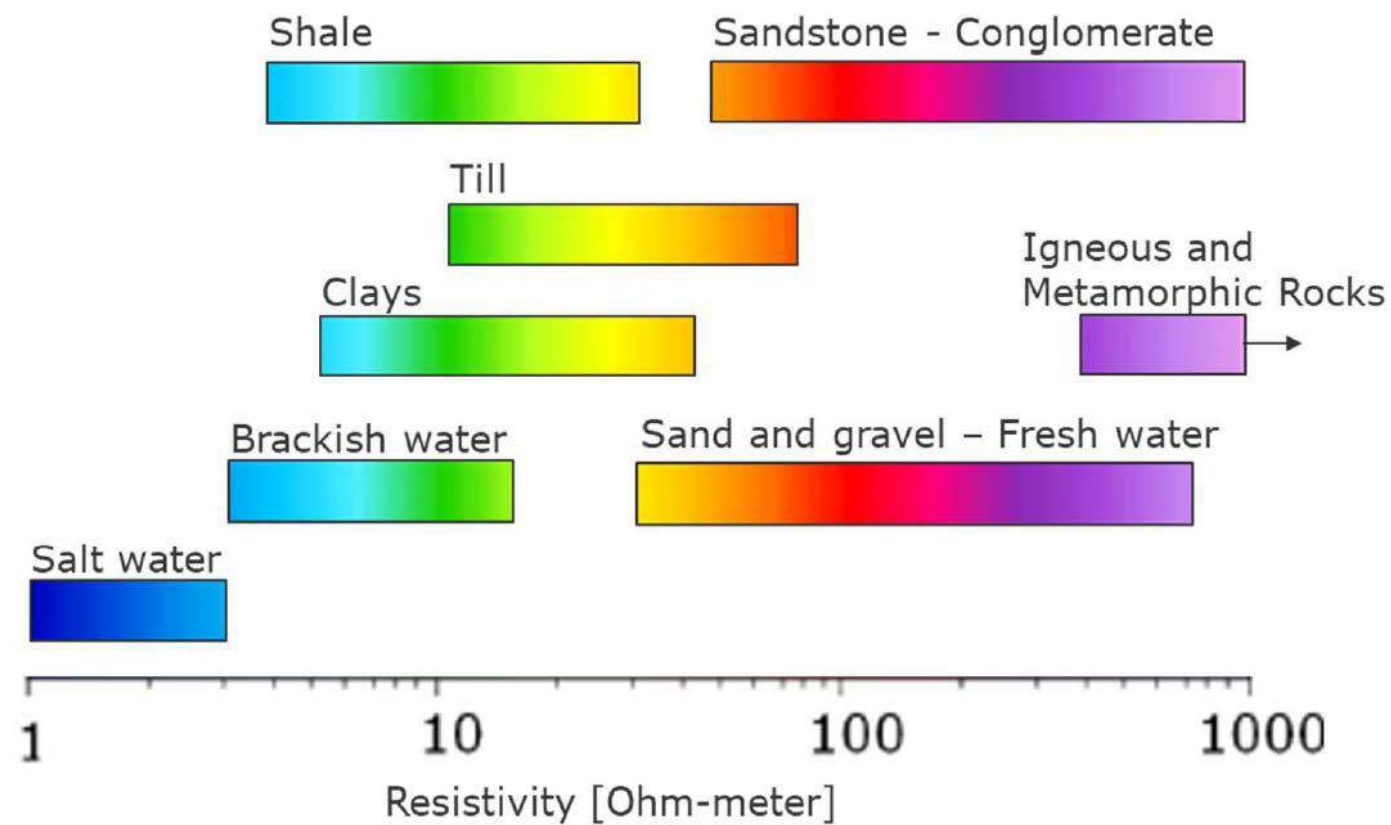
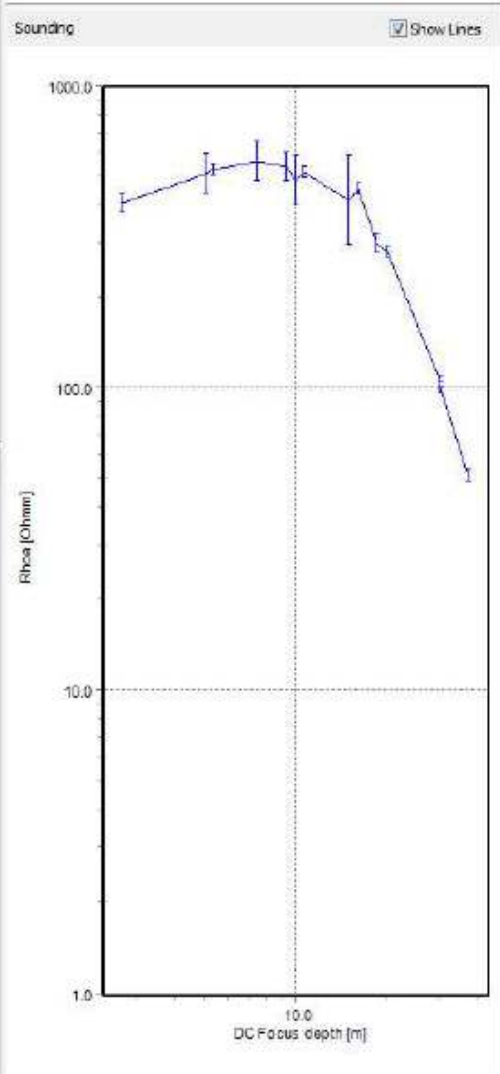
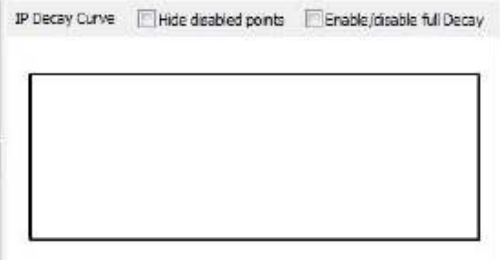
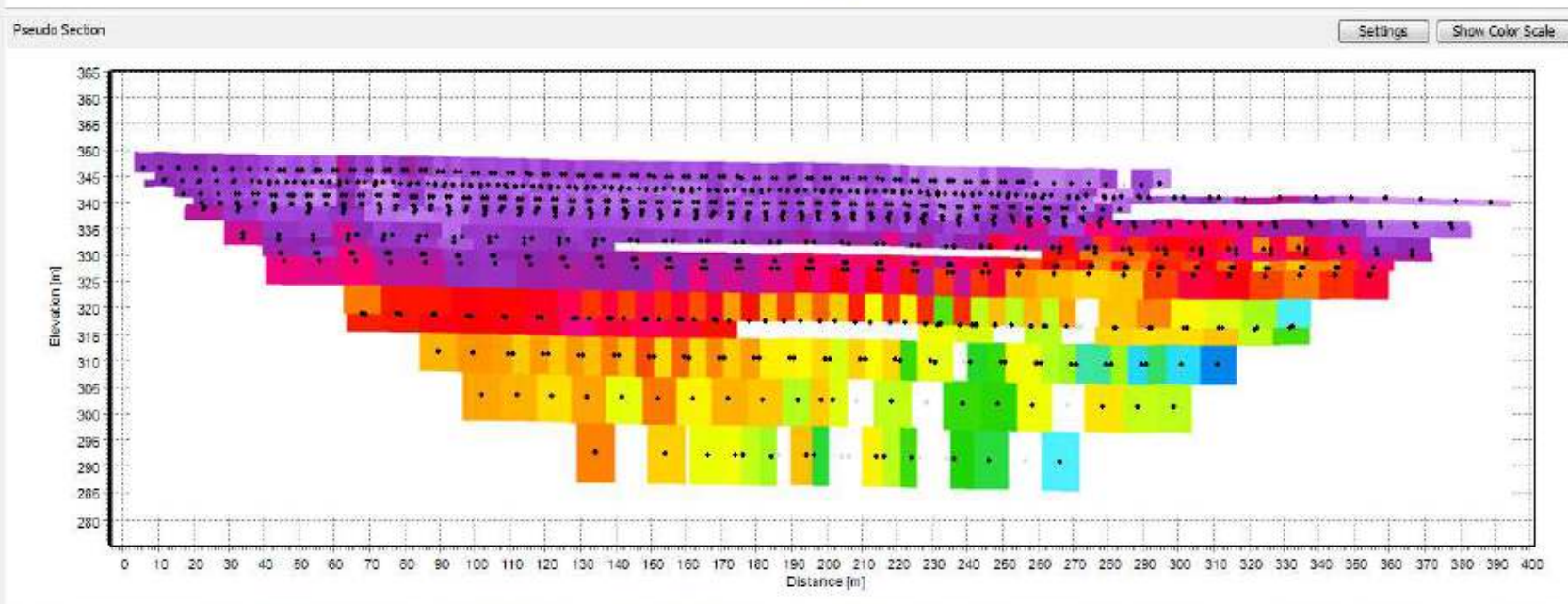
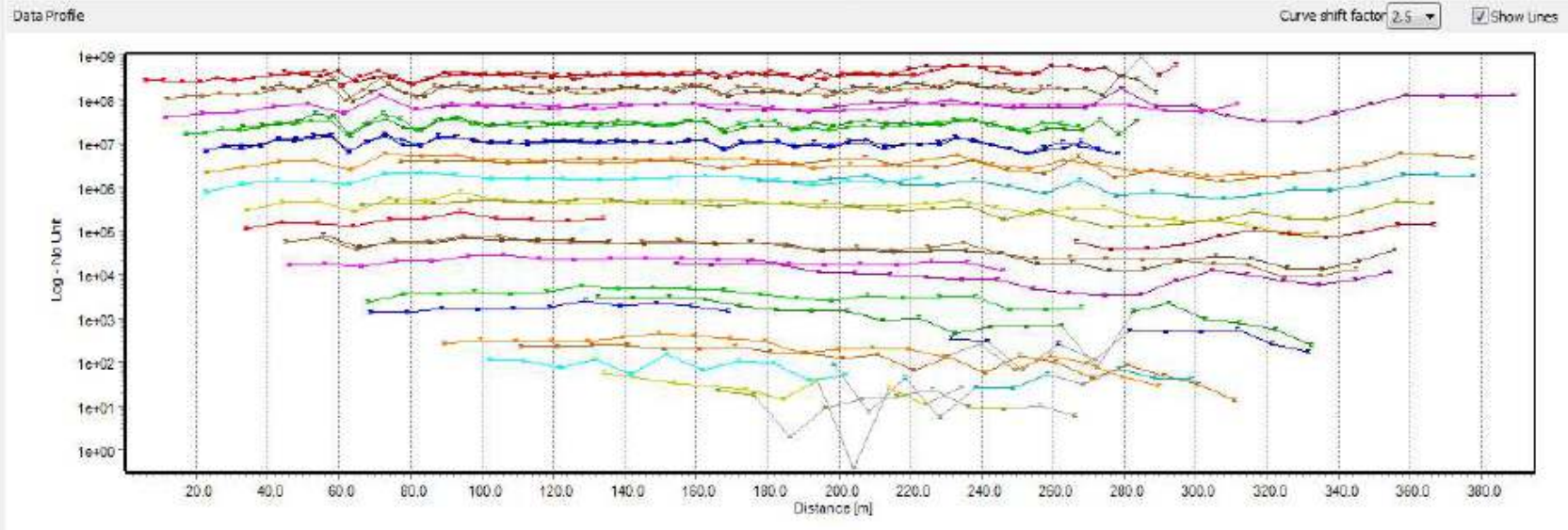
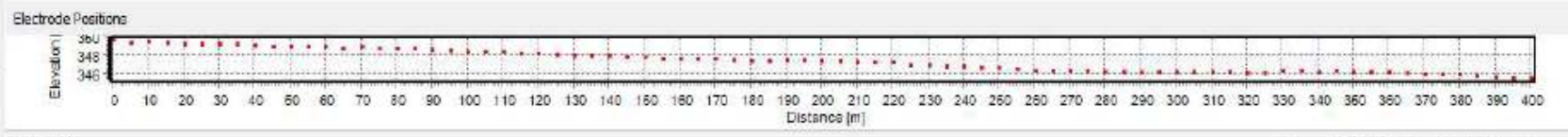


Figure 13: General interpretation from resistivity to type of sediments

Profile Soundings Statistics Processing

Settings

Dist...	No. ...	No. ...
5.0	1	1
15.0	6	4
25.0	12	7
35.0	18	9
45.0	23	11
55.0	24	11
65.0	27	13
75.0	28	13
85.0	30	14
95.0	30	14
105.0	31	15
115.0	32	15
125.0	32	15
135.0	34	16
145.0	32	14
155.0	34	15
165.0	34	15
175.0	35	14
185.0	35	14
195.0	36	14
205.0	36	14
215.0	35	14
225.0	35	14
235.0	35	15
245.0	34	15
255.0	33	15
265.0	31	16
275.0	25	15
285.0	21	14
295.0	16	12
305.0	14	10
315.0	14	10
325.0	12	9
335.0	11	9
345.0	8	7
355.0	7	7
365.0	5	5
375.0	3	3
385.0	1	1
395.0	0	0
405.0	0	0



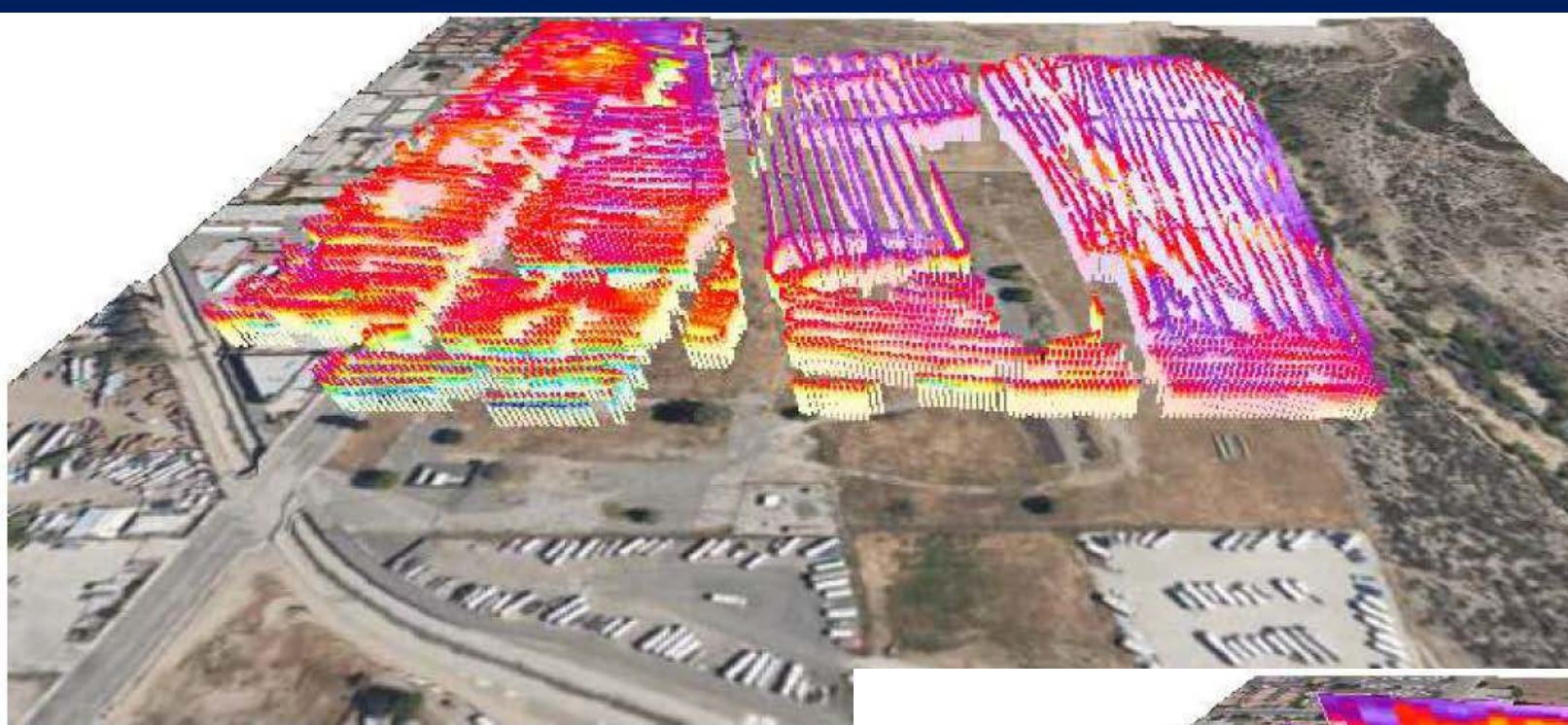


Figure 19 3D-view of the DUALEM results

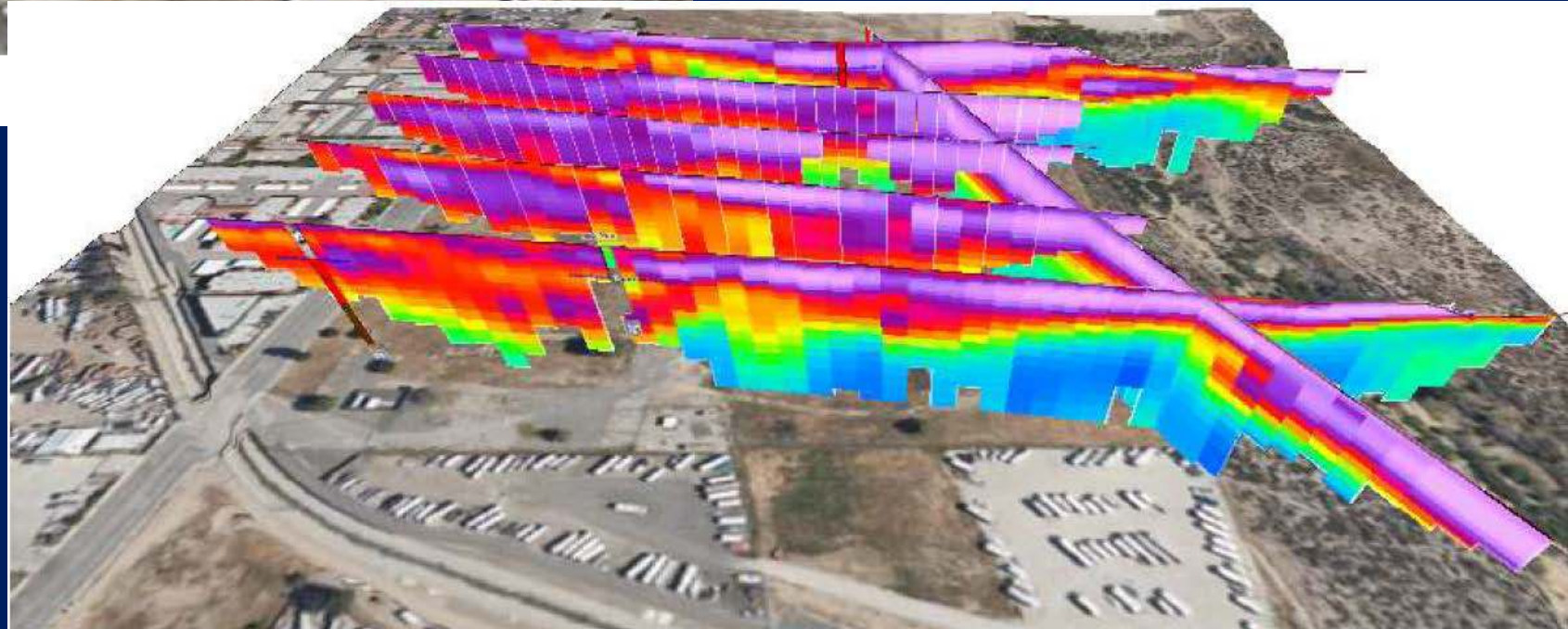


Figure 20 3D-view of the ERT results



Conclusions and Recommendations

- There is a recharge potential at the Old Castaic School Site
- The eastern part of the site seems to be most optimal for recharge
- High resistive sediments indicate sand or gravel with high permeability
- Hydraulic conductivities should be verified with infiltration tests.



Next Steps

- Conduct Infiltration Tests
- Drill Monitoring Well on the East End of Property
- Transducer Installation
- Collect Monitoring Data
- Begin Modeling Work

Questions?

