

# STATUS OF GROUNDWATER RECHARGE FEASIBILITY STUDIES

SCV Water Board Meeting  
March 5, 2024

# FEASIBILITY OF LOCAL RECHARGE

Can SCVWA infiltrate water in the local basin to support a groundwater recharge program?





Castaic Location



Pinetree Location



# FIELDWORK



Geophysical Survey



Infiltration Testing

Water Level Monitoring



# FIELDWORK CONTINUED



Limited Access Drill Rig



Soil Samples



Borehole Sampling

# FINDINGS

## Castaic

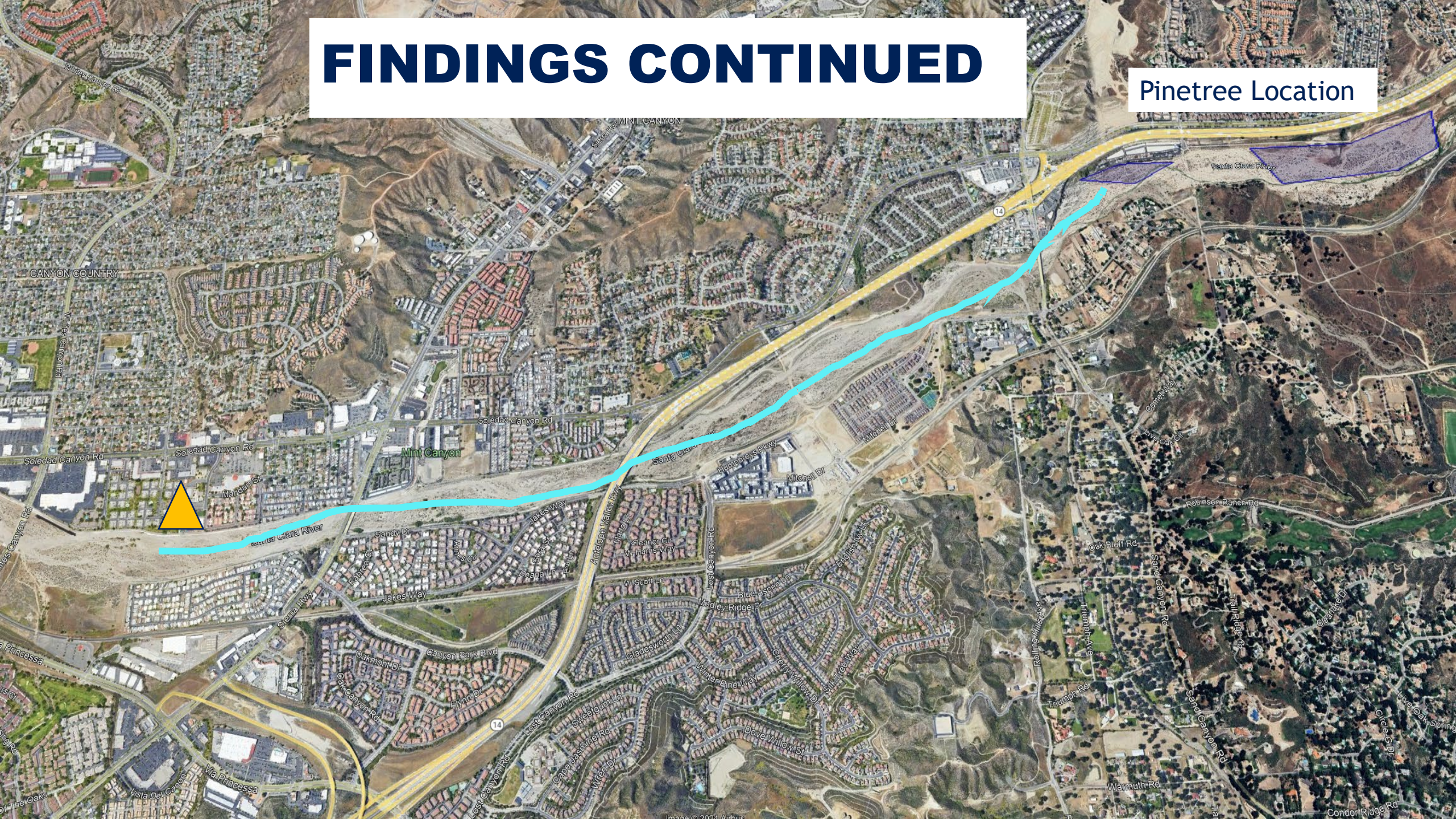
- 50-150ft Alluvial Aquifer Thickness
- Infiltration Testing Rates 7-12 ft/day
- Site can support 5,000 AFY of MAR

## Pinetree

- 130-180ft Alluvial Aquifer Thickness
- Infiltration Testing Rates 40-46ft/day
- Site can support 5,000-10,000AFY of MAR

# FINDINGS CONTINUED

Pinetree Location





# REMAINING QUESTIONS

How can we construct and implement a recharge program?



# RECOMMENDED NEXT STEPS



Project Easement or Land Acquisition



Engineering Analysis



Water Quality Characterization



Develop Permitting Strategies



Conduct Additional Modeling

**QUESTIONS?**