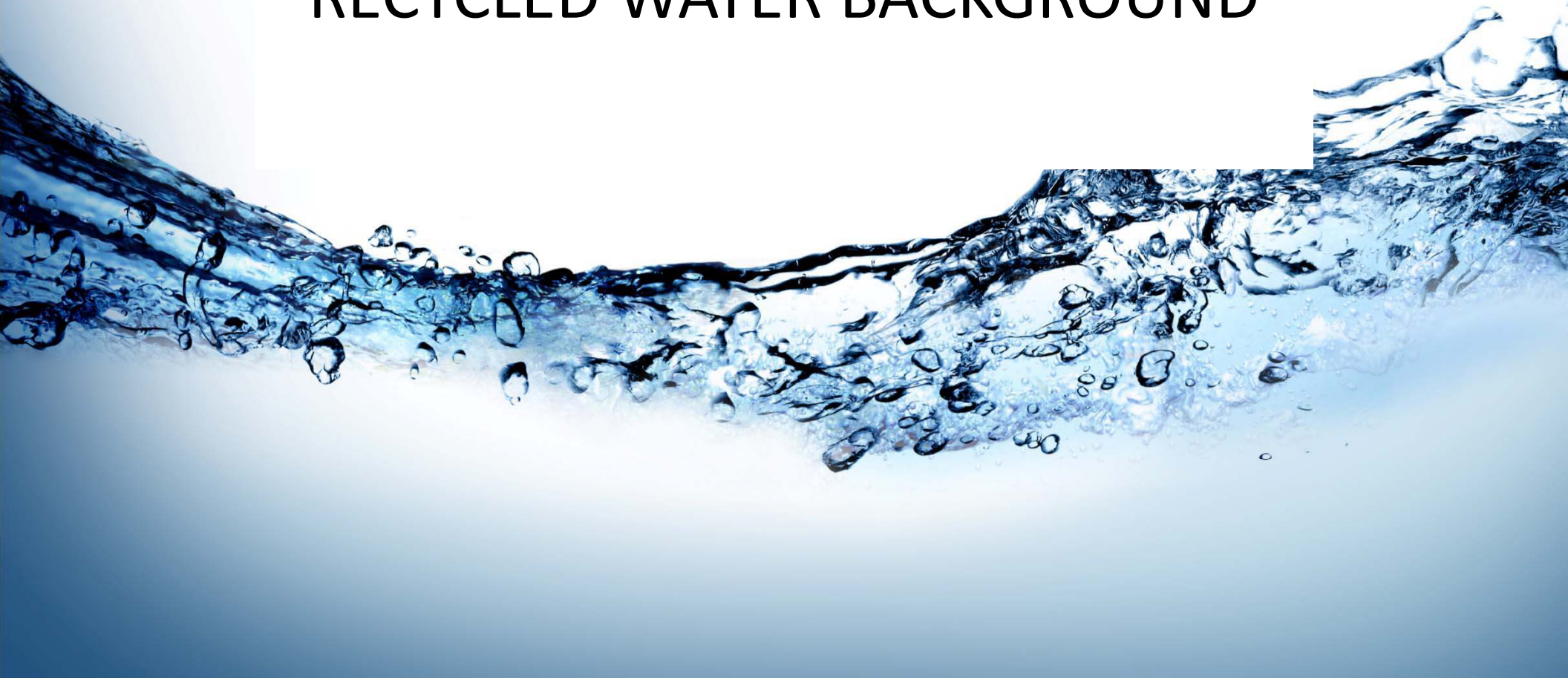


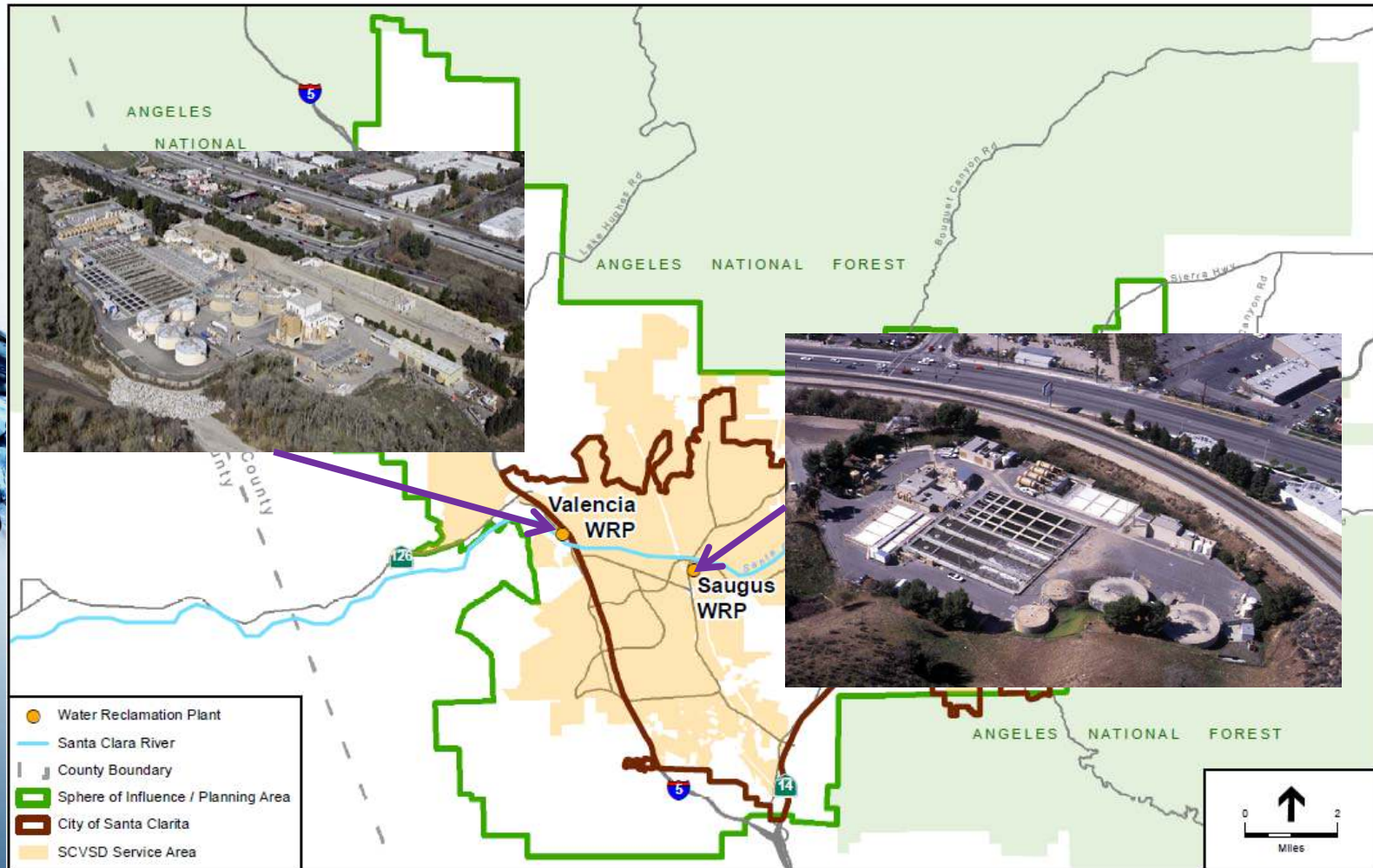
Recycled Water Status Update SCV Water Board Meeting July 17, 2018



RECYCLED WATER BACKGROUND



Water Reclamation Plants



Valencia Water Reclamation Plant

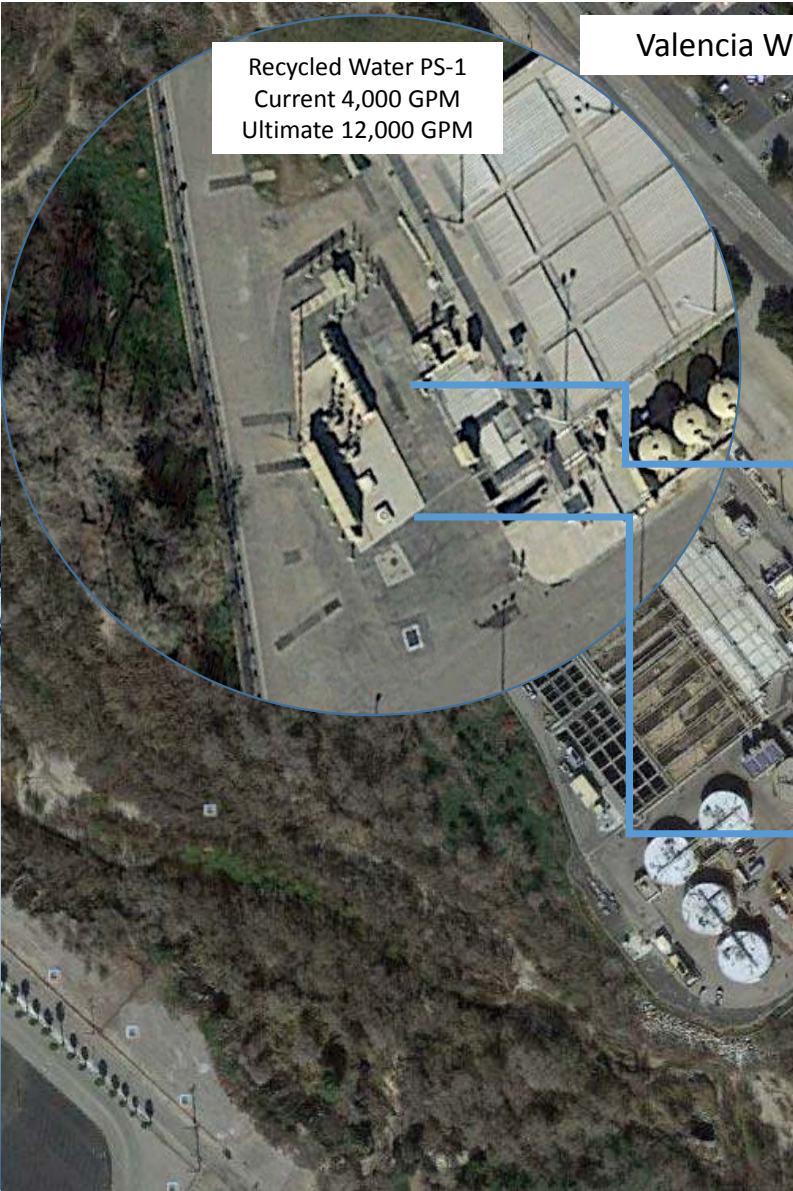
Recycled Water PS-1
Current 4,000 GPM
Ultimate 12,000 GPM



Recycled Water PS-1 - W



Recycled Water PS-1 - N

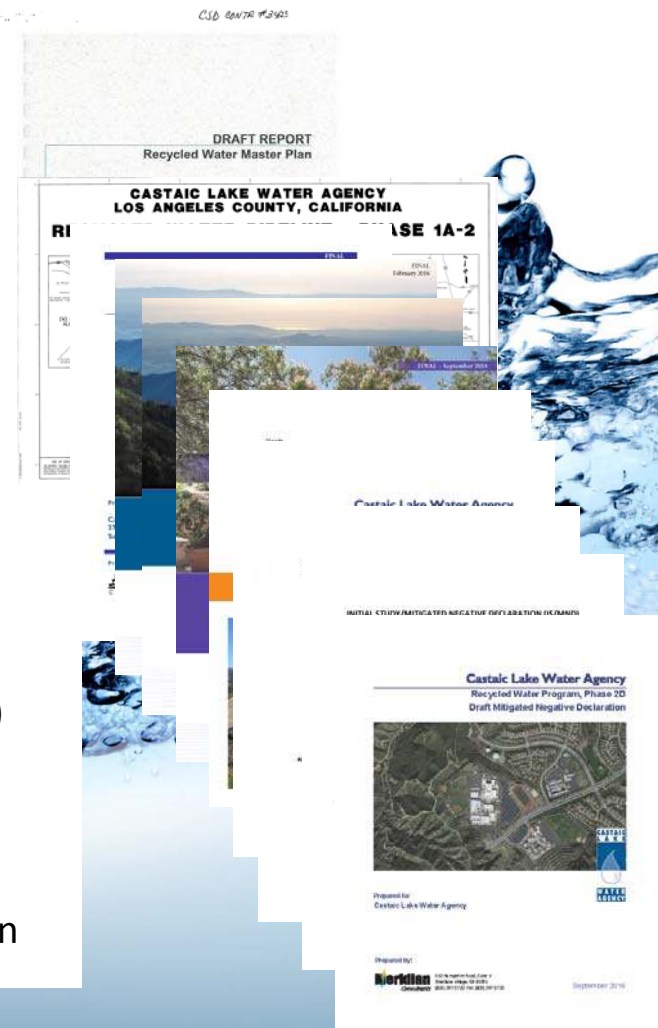




Recycled Water Timeline

- 1993: Reclaimed Water Master Plan
(9 Phases - 10,361 AFY Demand)
- 1996: LACSD and CLWA RW Contract
(contracted for up to 1,600 AFY)
- 2002: Draft Recycled Water Master Plan
(11 Phases - 17,441 AFY Demand)
- 2004: RW Phase 1A Completed, RW deliveries commenced
- 2007: RWMP Program EIR certified
- 2016: SCV RW Rules and Regulations adopted
2015 Urban Water Management Plan
Recycled Water Master Plan (RWMP - Not yet adopted)
(4 Alternatives - 12,395 AFY of reuse)
RWMP Program EIR (Not yet adopted)
- 2017: Adopt and File CEQA docs for each project
- 2018: Final Design on West Ranch, South-End and Vista Canyon

1
2
3
4
5
6
7
8
9
10
11
12
13
14
15
16
17
18
19
20
21
22
23
24
25
26
27
28
29
30
31
32
33
34
35
36
37
38
39
40
41
42
43
44
45
46
47
48
49
50
51
52
53
54
55
56
57
58
59
60
61
62
63
64
65
66
67
68
69
70
71
72
73
74
75
76
77
78
79
80
81
82
83
84
85
86
87
88
89
90
91
92
93
94
95
96
97
98
99
100



2016 DRAFT RECYCLED WATER MASTER PLAN UPDATE



Study Goal and Objectives

Near-Term Objective:

- Incorporate updates for Phase 2 Recycled Water System expansion.
- Support upcoming design work.
- Assist in pursuit of currently available grants and loans.

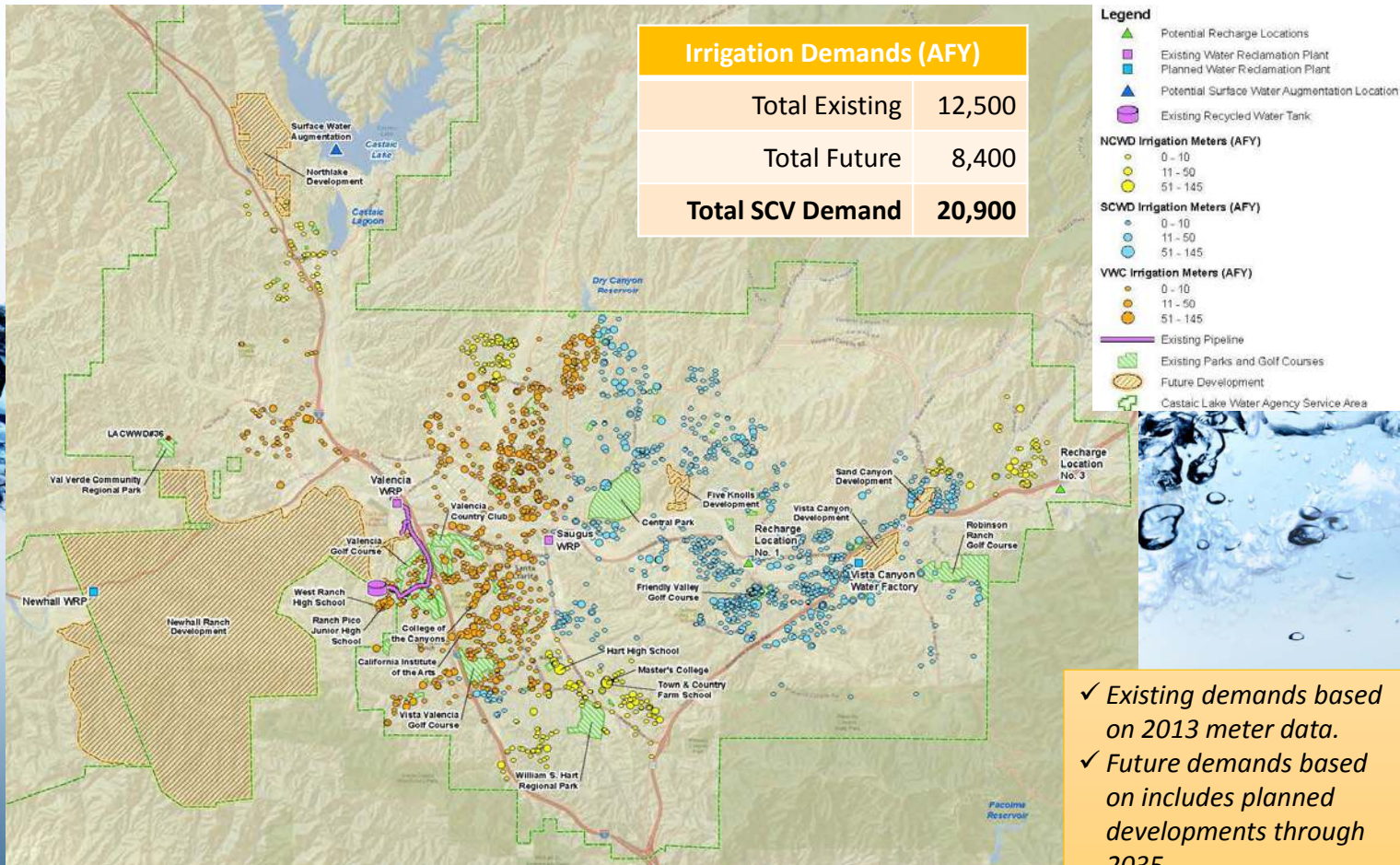
Mid-Term Objective:

- Optimize expansion of the non-potable recycled water system.
- Further investigate next steps for potable reuse.

Long-Term Objective:

- Continue exploration and/or implementation of potable reuse through surface water augmentation and/or direct potable reuse.

Recycled Water Market: Non-Potable Reuse

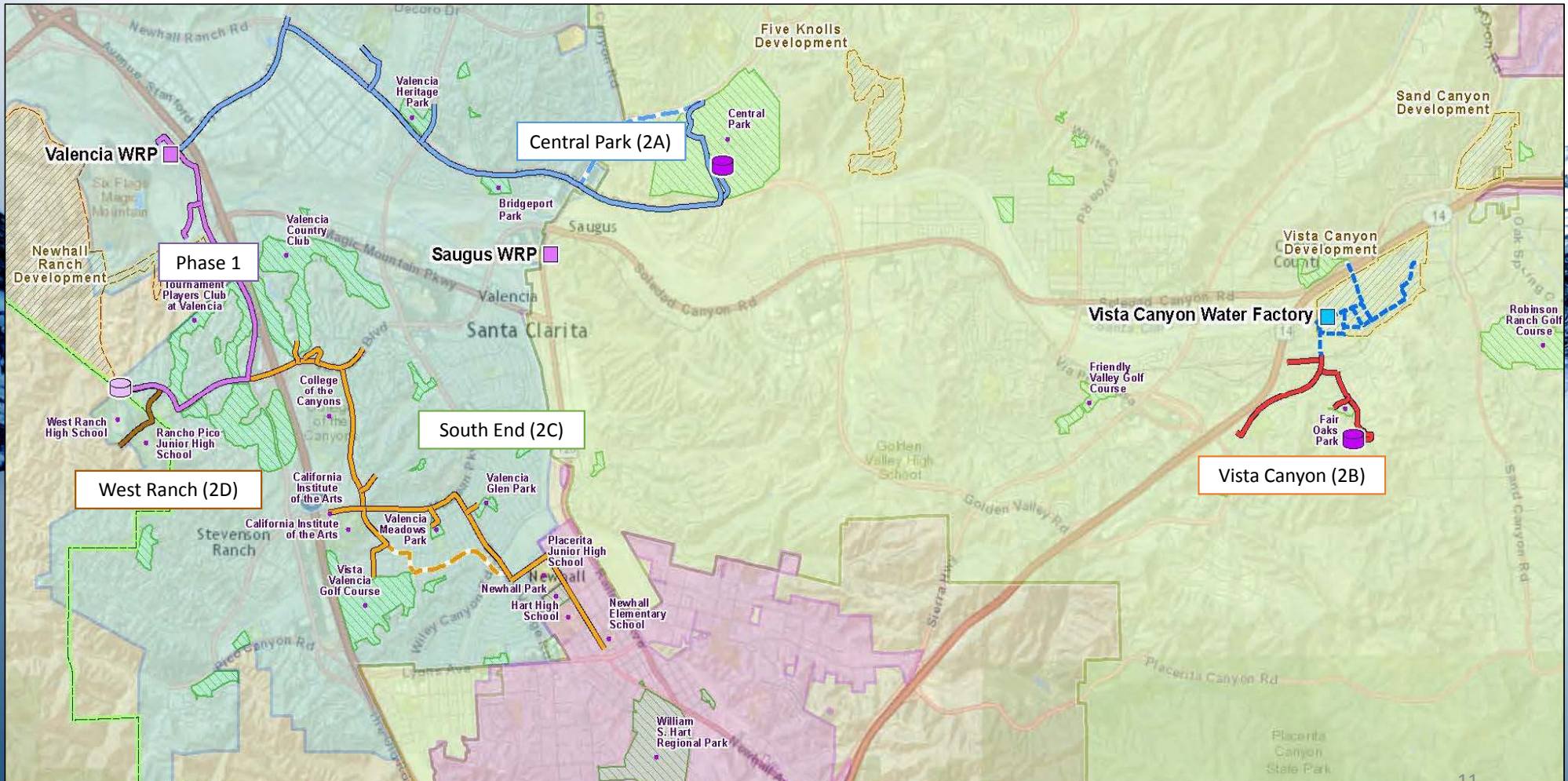


Project Alternatives

Alternative	Description	Range of Annual Demands (AFY)*
Alternative 1 - Non-Potable Reuse Expansion (Phase 2)	Phase 2A, 2B, 2C, 2D	186 to 1,374
Alternative 2 - Non-Potable Reuse Expansion (Future Phases)	Future Expansion North, Future Expansion South, Westside Communities	1,900 to 7,180
Alternative 3 - Groundwater Recharge (Surface Spreading)	Spreading Site #1 and/or Spreading Sites #3a/b	1,660 to 3,410
Alternative 4 - Advanced Treatment for Potable Reuse	GWRR Direct Injection, SW Augmentation Direct Potable Reuse	4,250 to 4,810

** Some of the Alternative 2 project demands include serving Phase 2 demands. There is insufficient supply to meet all demands for Alternatives 1-4*

Phase 2 Projects



Phase 2 Projects Summary

Project	Length (Feet)	Demand (AFY)	Estimated Construction Cost (\$M)	Expected Construction Start Date	CEQA Status	Final Design (%)	Grant Funding (\$)	Anchor Users
Central Park (2A)	33,000-40,000	480-560	22	FY 2022/23	MND Complete	0	-	Valencia HS, Central, Bridgeport and Heritage Parks
Vista Canyon (2B)	11,000	300	7	FY 2018/19	MND Complete	15	2.7 M	Fair Oaks Park, Fair Oaks School
South End (2C)	33,000	1,374	17.5	FY 2020/21	MND Complete	60	-	COC, Cal Arts, Vista Valencia GC, Henry Mayo Hospital, Hart HS, Placerita JHS, Newhall Park
West Ranch (2D)	5,000	211	4	FY 2018/19	MND Complete	90	1.8 M	West Ranch HS, Ranch Pico JHS, Oak Hills Elementary

NEXT STEPS

- Finalize the design of West Ranch, South-End and Vista Canyon Projects
- Continue seeking grant funding

RECYCLED WATER SUPPLY



Status of Recycled Water Supply

1. Contracts
2. Permits
3. Technical/Environmental Work Required

*Where we are now and how do we
get where we need to be in the future?*

Where We Are Now

- Existing Contract with SCVSD
 - Contract covers amount and terms of payment
 - 1,600 Acre Feet per Year
 - Semi-complicated formula for determining cost
- SCVSD holds a 1211 Permit with the SWRCB
 - 1,600 Acre Feet per Year
 - Currently covers Phase 1 of the Recycled Water Program
 - Change in place of use could cover portion of Phase 2 projects

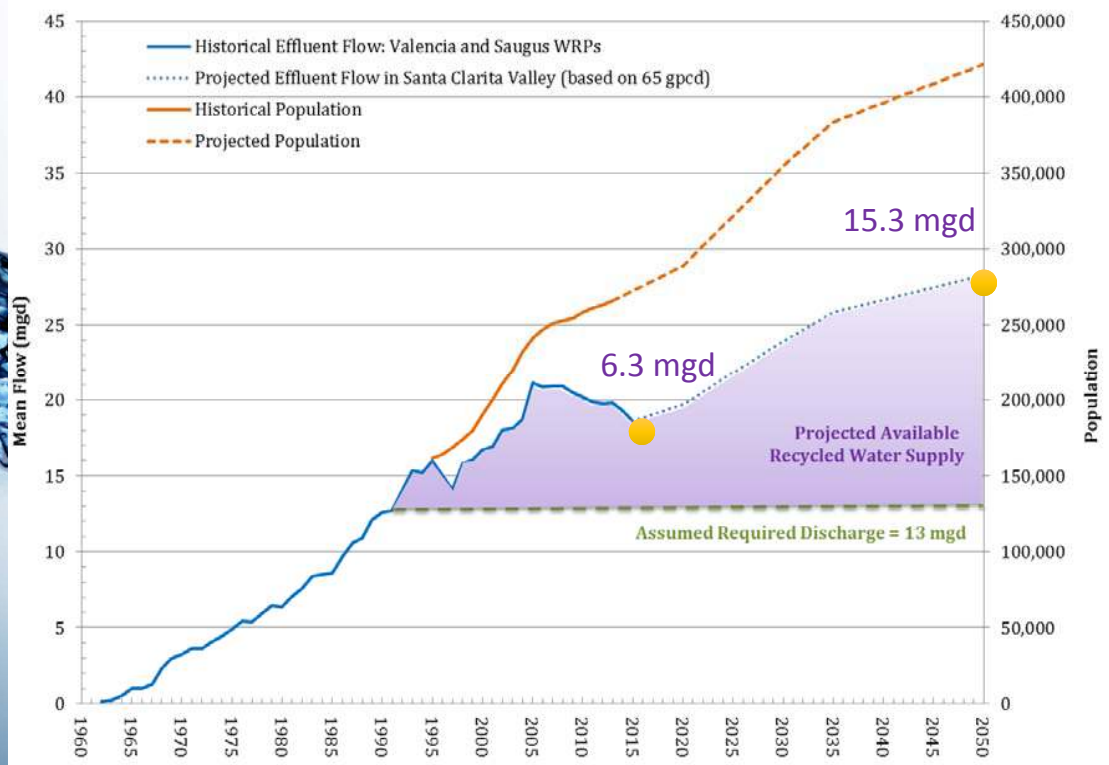
Right To Use Recycled Water

- State Policy to put recycled water to beneficial use
- Right to use regulated by Water Code Section 1211
 - Permits Issued by SWRCB
 - Consultation with CA Dept. of Fish and Wildlife required
 - Determines how much water is needed to support environmental purposes (Public Trust)

Where Do We Need To Be In The Future?

- UWMP
 - Estimates a total recycled water use of just over 10,000 acre-feet
- SCVSD current efforts to cover RW Masterplan
 - Originally part of chloride control project EIR that was successfully challenged
 - Now subject to a separate EIR being prepared
 - Key determination will be the quantity of water needed to support environmental values

Recycled Water Supply



Recycled Water Supply (AFY)	
Total Existing	7,000
Total Future	17,000
Total SCV Supply	24,000

- Not all flows can be utilized**
- ⊗ Limited Saugus after discharge requirement
 - ⊗ Limited use near Vista Canyon Water Factory
 - ⊗ Limited use near Newhall Ranch WRP

Our World Is Changing

- Sustainable Groundwater Management Act
 - Hydrology of the Santa Clara River
 - Groundwater Dependent Ecosystems (GDEs)
- 1211 Permitting Process
 - Environmental values (ESA)

Path Forward

1. Define the best role for SCVWA
2. Complete necessary Technical and Environmental Studies
3. Obtain permits
 - Request for change in place of use
 - Next drop in
 - 1211 for additional uses

Future Board Presentation – Trussel Feasibility Study (Watershed Recharge)

A high-speed photograph of a splash of clear blue water. The water is captured in mid-air, creating a complex, textured shape with many small droplets and bubbles. The background is a plain, bright white, which makes the blue water stand out sharply. The overall composition is clean and modern.

QUESTIONS