

# Water Resources Staff Activities

Water Resources and Watershed Committee

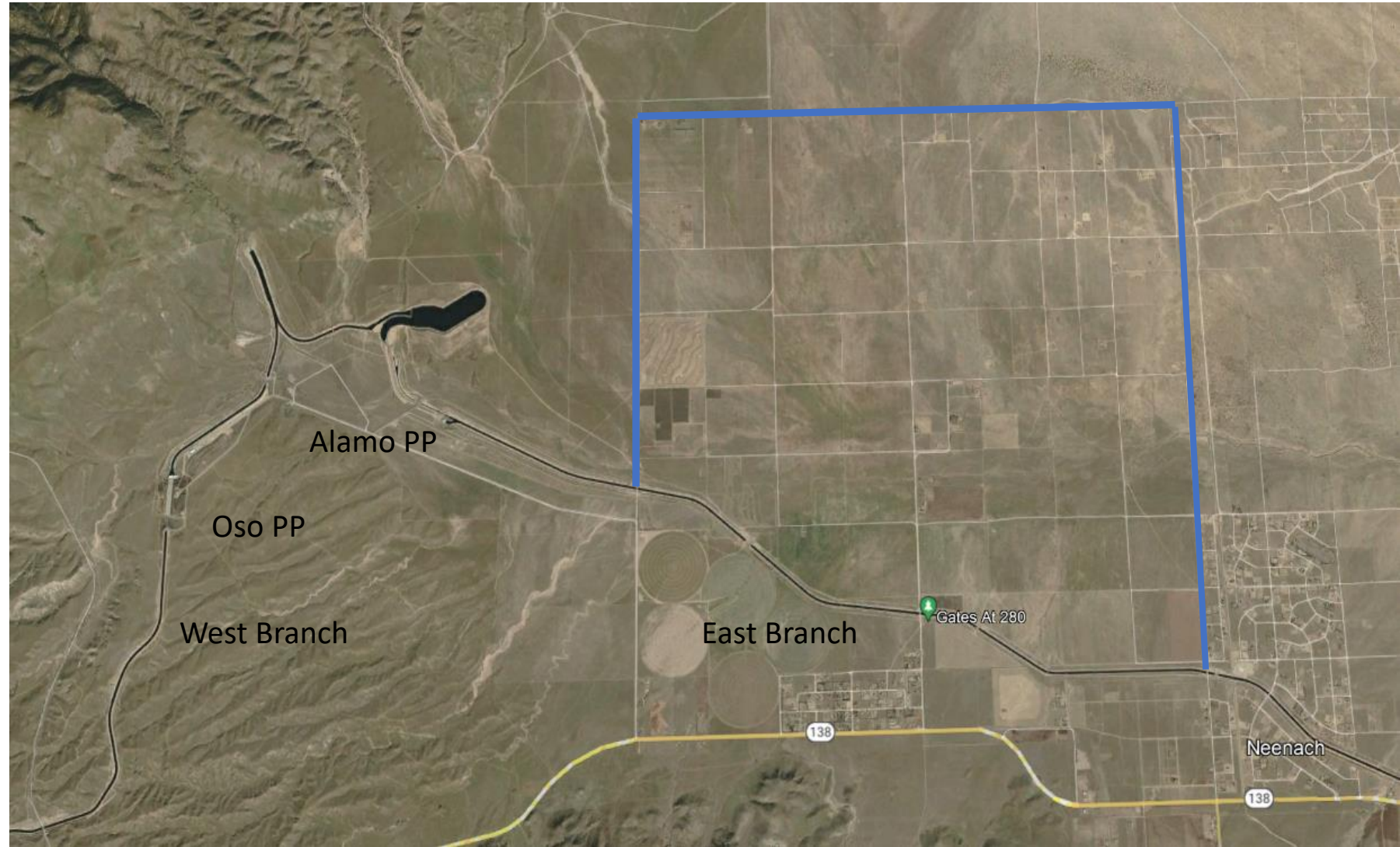
July 13, 2022

Item 4.2

# AVEK High Desert Water Bank

## Key Characteristics

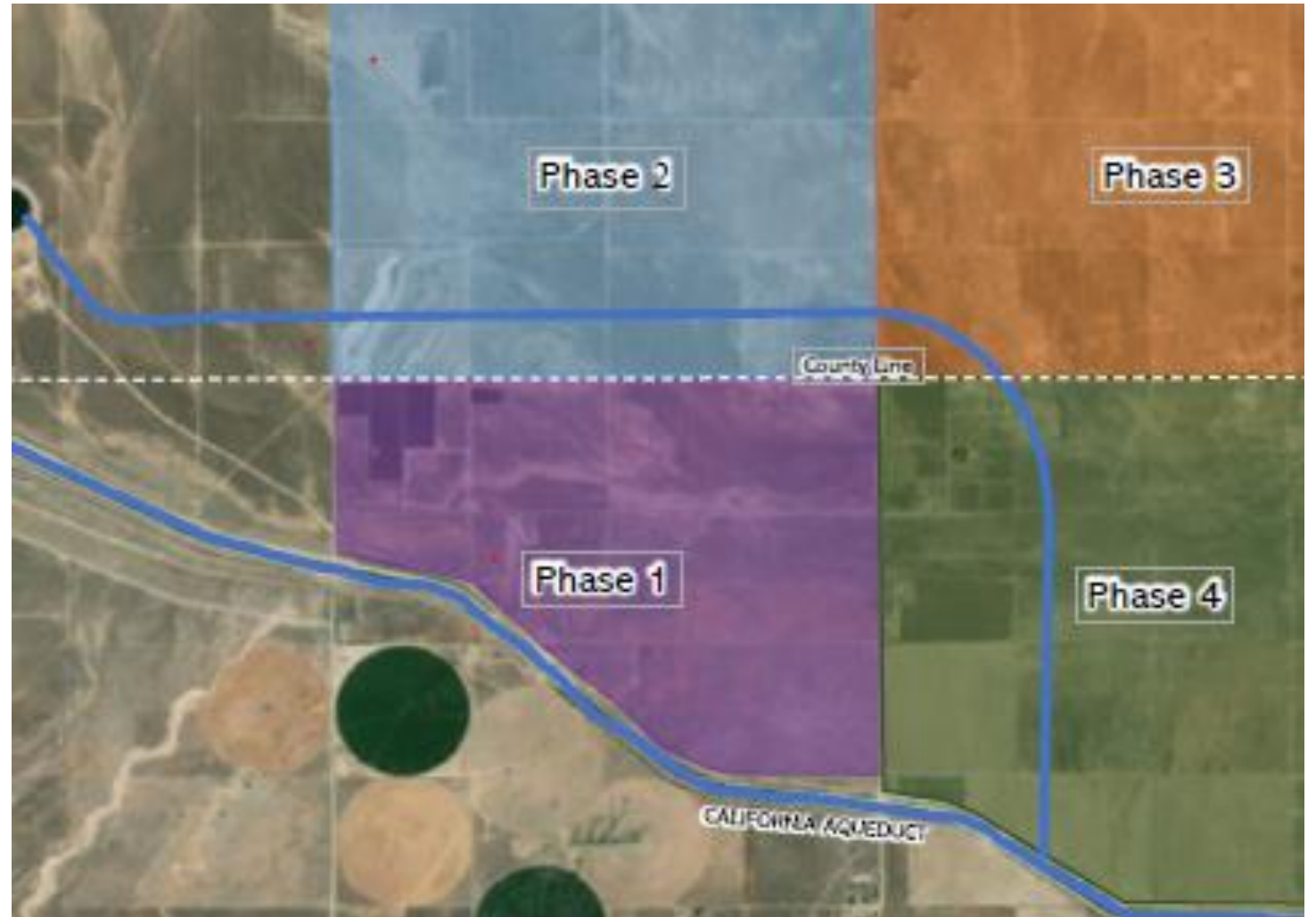
- Site previously in agricultural production
- Adjacent to West and East Branch of SWP
- Fully Adjudicated Groundwater Basin



# Program Phases

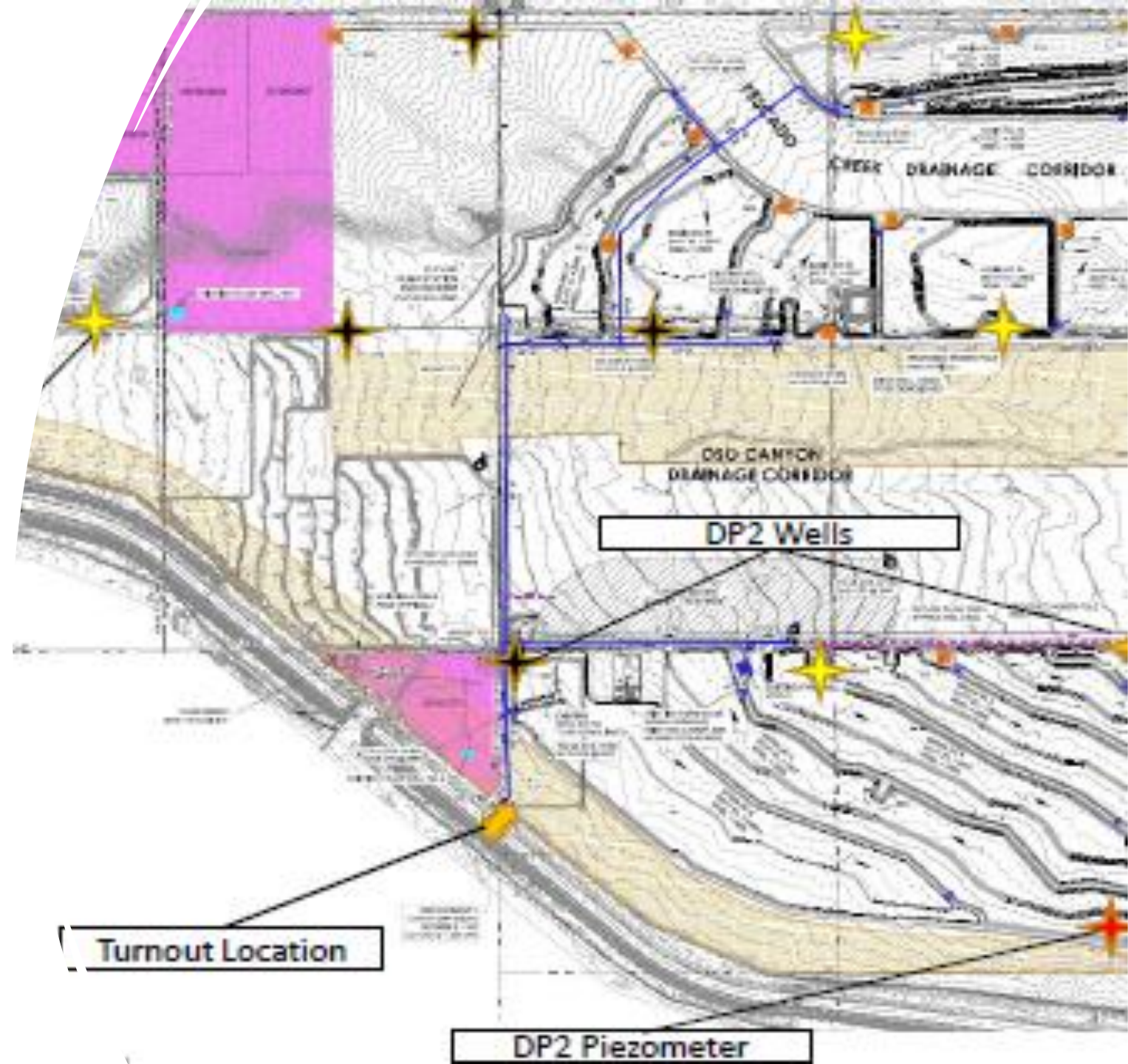
---

- Program has multiple phases
  - Phase 1 Under Construction
  - Phase 2 Initiating Planning



# Phase 1

- Partnership with MWDSC
- 70 TAF Storage/Extraction Capacity
- 280 TAF Maximum Storage
- Currently under construction
  - SWP Connection
  - Spreading facilities
  - Recovery Wells
  - Water Quality Treatment (As)



# Phase 2

---

- Initiating Planning
  - Size dependent on letters of interest from prospective participants
    - SCV Water
    - MWDSC
    - Santa Clara
    - Palmdale
    - Others
  - Draft MOU
    - Terms for participation
    - Finance planning and environmental work
  - Schedule
    - Operational by 2030
    - Opportunities for early deliveries

