



# SCV Water Conservatory Garden & Education Experience

**DESIGN CHECK-IN**

Water Resources and Watershed Committee  
March 10 ,2021  
Item No. 5.2

## Objectives

- Seek Committee Feedback on Site Design Concept
- Guidance on Watershed Exhibit Design
- Review Process
- Inform on Schedule & Next Steps

# Review



# Review – Current Status



# Review

- Limited Utility
- Antiquated Plant Pallet
- Obsolete Irrigation Technology
- Piecemeal Construction
- Fully Depreciated Asset
- Latent Opportunity

# Process Overview



# Groundwork

- Assessed Three Options
- Leveraged Legacy Work
- Incorporated Stakeholder Input
  - Committee Recommendation(s)
  - Management Review
  - CONGA-TAG (Staff, Exhibit & Design Teams)

# Option C

- Scaled Garden & Pocket Parks
- Utilizes Current Area
- Reduces Size (~8 acres to <1 acre)
- Modernizes Landscape and Irrigation Practices





# Option C

- Scaled Garden & Pocket Parks
- Improves Education Resources
- Expands Access
- Estimated Cost = \$1.4 Million

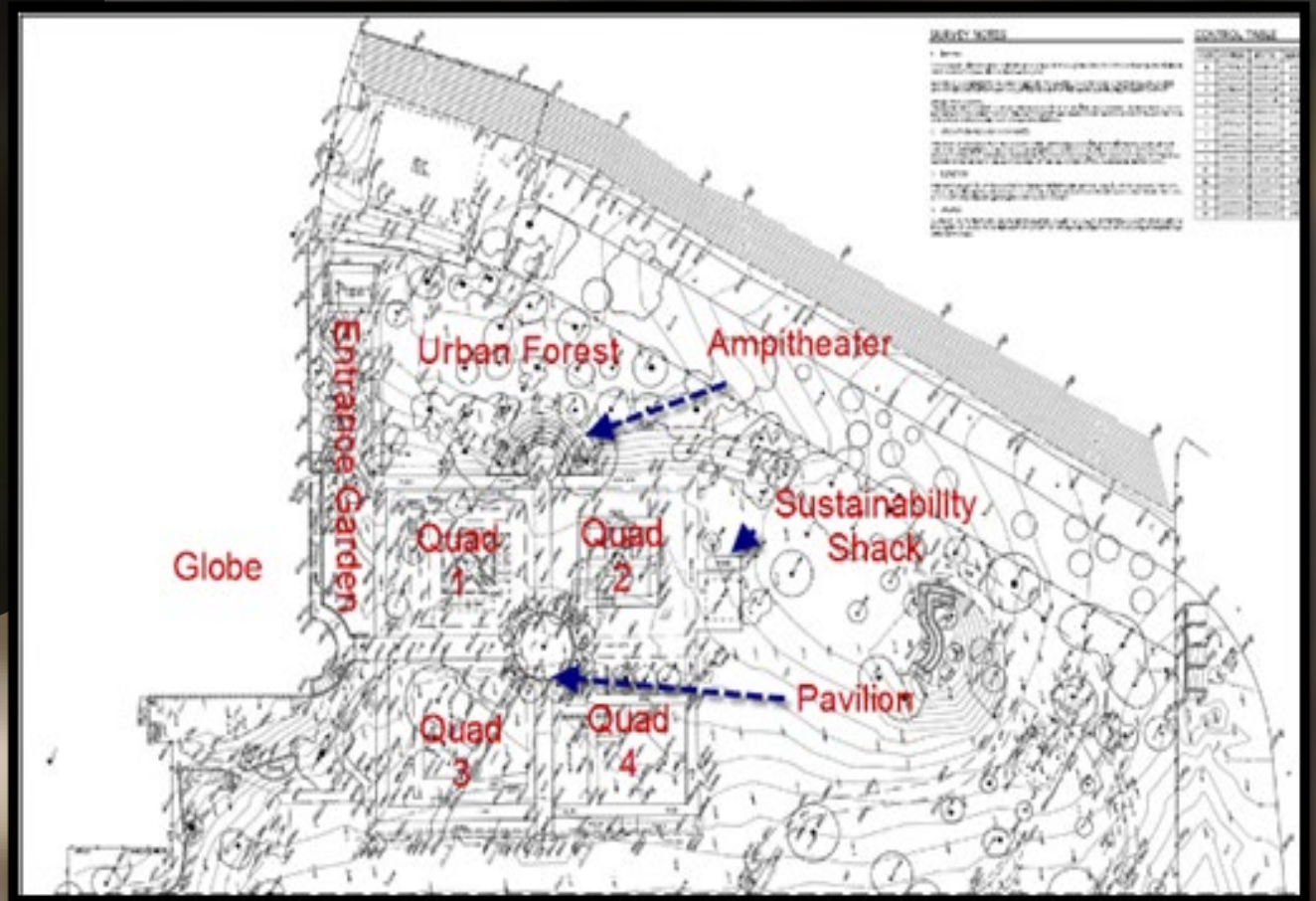


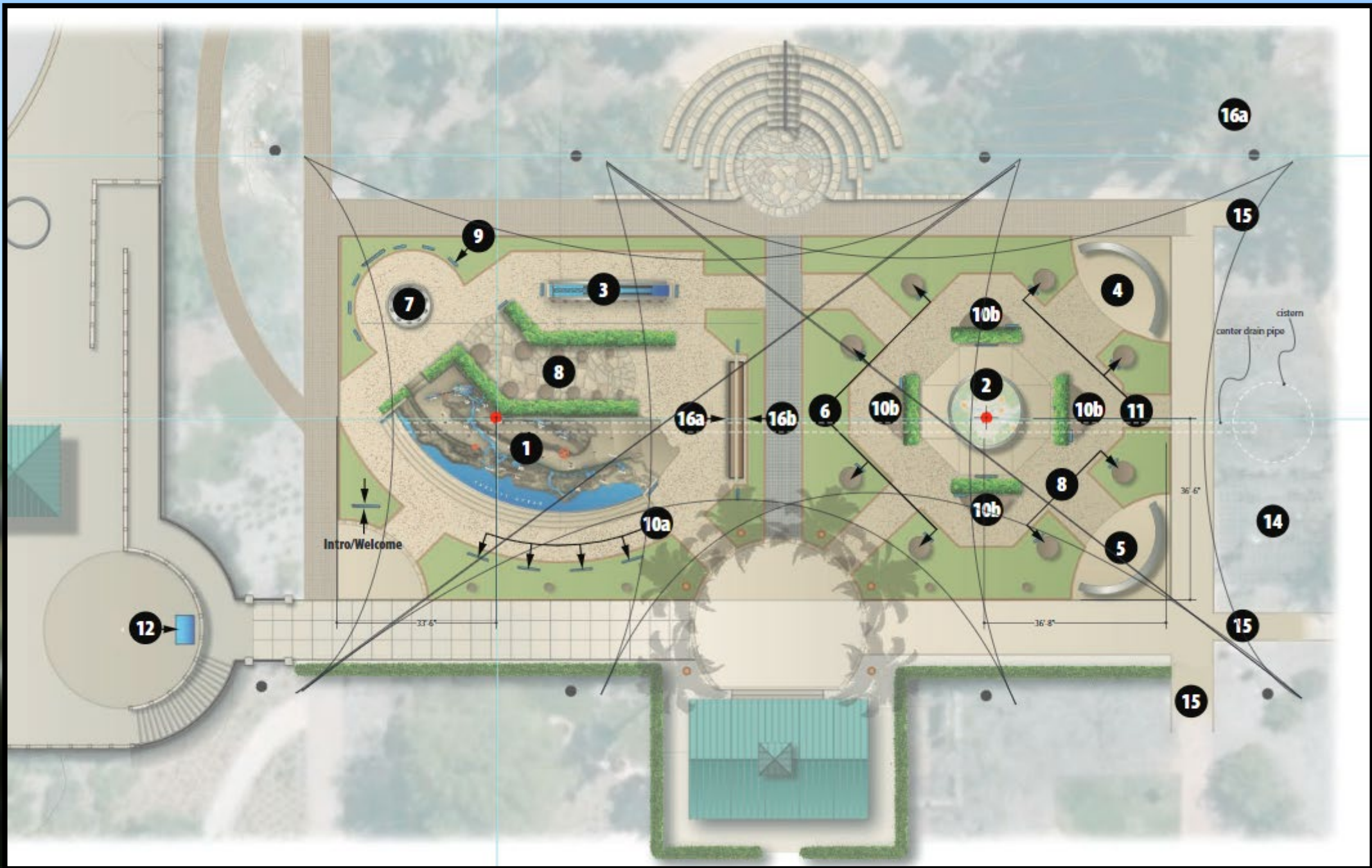
# Site Design



# Concept Overview

- Transformation – Garden & Exhibit Space
- Supports Child & Adult Education Programs
- Incorporated Stakeholder Input
  - Board & Committee Recommendation
  - Management Review
  - Water Conservation Educators
  - Conservation and Water Resources Staff
  - Engineering Staff
  - Facility Staff





# Design Concept

- Organic Flow & Immersive Experience
- Additional Greenspace and Education Exhibits
- Multi-Purpose Outdoor Classrooms & Meeting Spaces
- Shade Coverage for Exhibits and Yearlong Accessibility
- Demonstration Gardens (CA Native and Desert)
- High-Efficiency Irrigation Upgrades
- Stormwater Drainage & Collection
- ADA/CBC Compliant

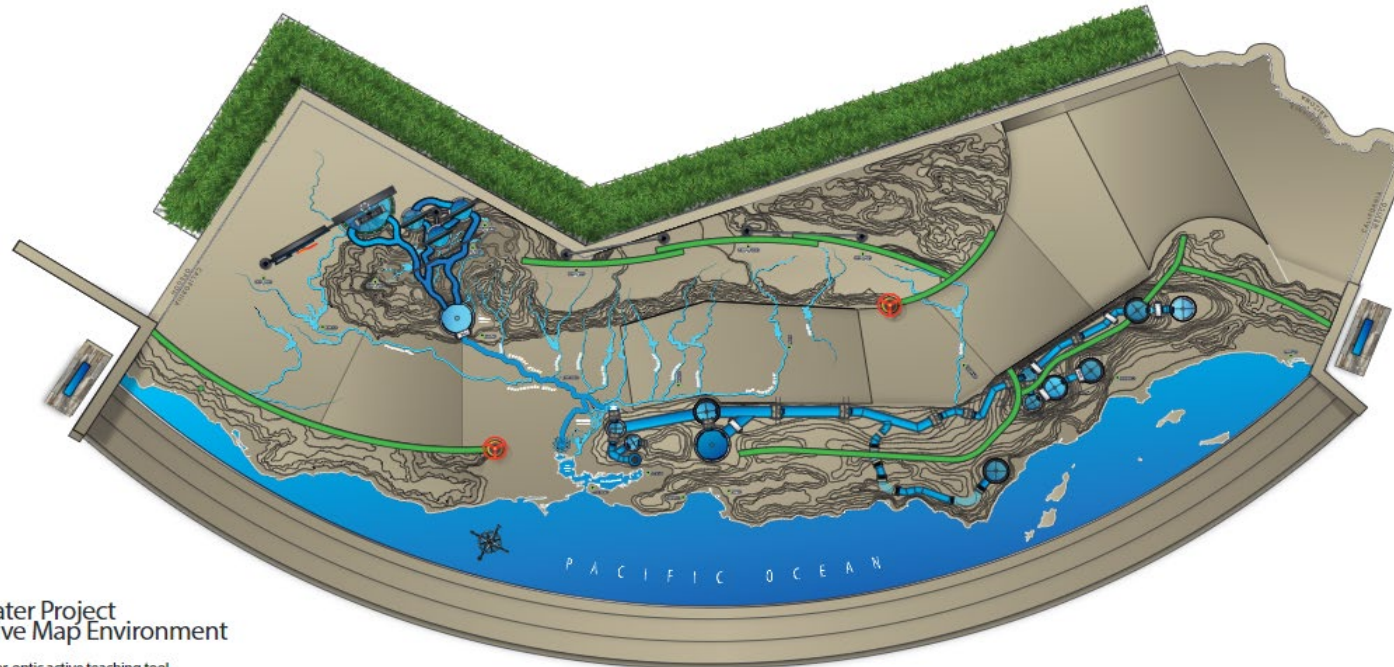


# Education Exhibits



# Completed Exhibit Design

State Water Project "Where Your Water Comes From"



State Water Project  
Interactive Map Environment

Water and fiber-optic active teaching tool

# Proposed Exhibit Design

## SCV Watershed & Aquifers

### Design Concept

- 360° View of SCV Watershed
- Model Topography & Community
- Demonstration of Alluvium & Saugus Aquifers
- Supports Flow (Global, Statewide, Local Water Components)
- Provides Design Symmetry
- Supports & Enhances Curriculum

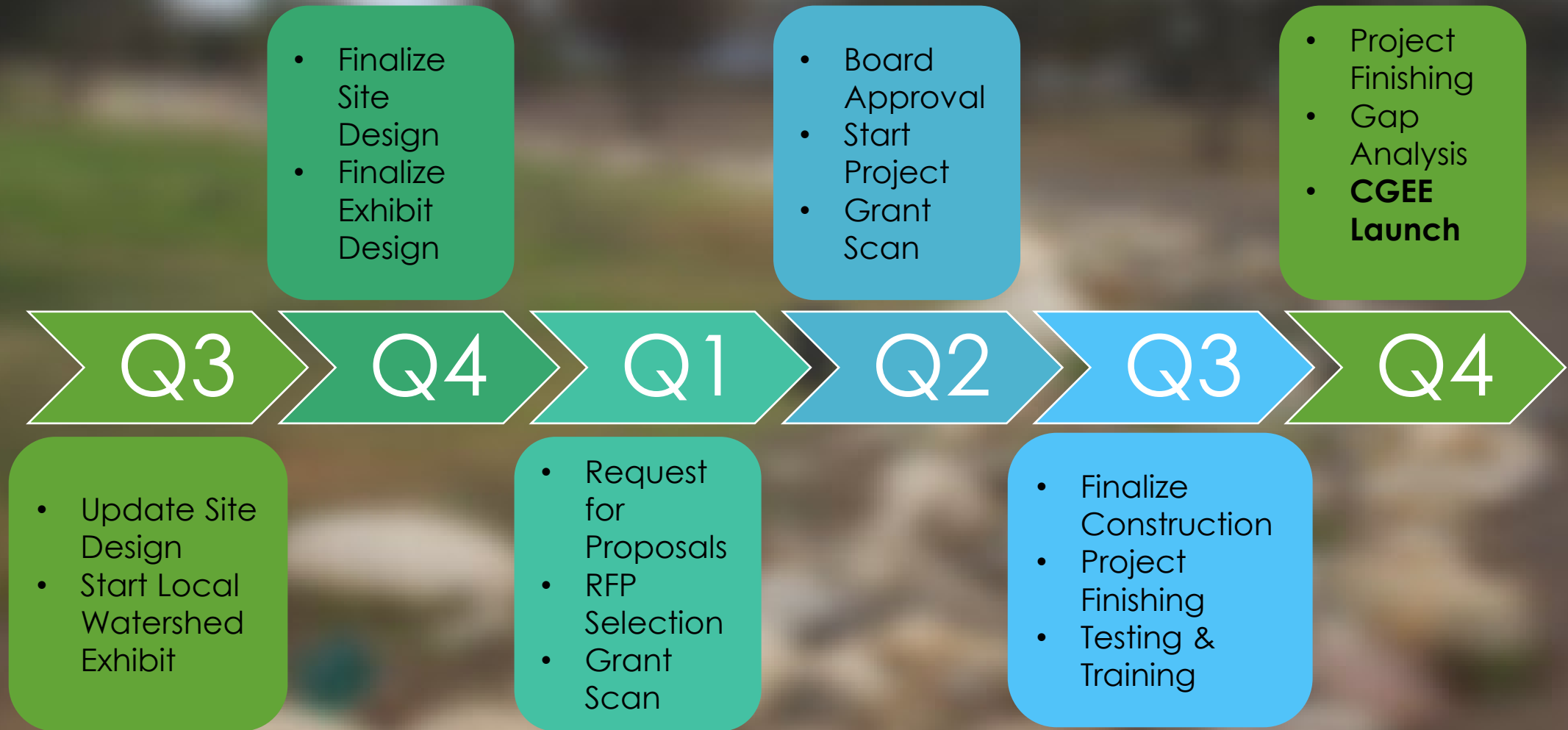




# Project Schedule & Next Steps



# Project Schedule & Next Steps



**Matthew S. Dickens, MPA**  
**Sustainability Manager**  
**SCV Water**

**[mdickens@scvwa.org](mailto:mdickens@scvwa.org)**

