

A photograph of a garden path with various plants and rocks. The path is made of light-colored gravel and leads through a garden with green shrubs, purple flowers, and large grey rocks. The background is slightly blurred, showing more trees and foliage.

SCV Water Conservatory Garden

A PATHWAY FOR THE FUTURE

SCV Water Regular Board Meeting
September 3, 2019
Item No. 7

Pathway

- About
- Current Issues
- Strategic Path
- Groundwork for the Future
- Next Steps

About



About

- Conservatory Garden History
- Education & Demonstration
- Community Events



Current Issues



Issues

- Education Excellence
- Limited Public Accessibility
- Management & Maintenance

Strategic Path



Strategic Path

- Mission
- Vision
- Values



The background of the slide is a blurred photograph of a garden. A light-colored path winds through the scene, surrounded by various green plants and shrubs. In the distance, several people can be seen walking or standing, though they are out of focus. The sky is a clear, bright blue.

Mission

Educating the public on the value of water.

Vision

Creating sustainable public spaces for educational, inspirational, and demonstration purposes pertaining to the values and beneficial uses of water throughout the Santa Clarita Valley.



Values

- Leadership
- Education
- Engagement
- Sustainability
- Water Efficiency
- Community
- Collaboration
- Partnerships
- Innovation

Objectives

- Education-centric Approach
- Define Size & Scope
- Update Interactive & Education Support
- Update Irrigation Plant Pallet
- Update Irrigation Equipment
- Develop Long-term Resource & Management Plan
- Develop & Implement Performance Management
- Create Opportunities for Collaboration and Cooperation



Groundwork for the Future

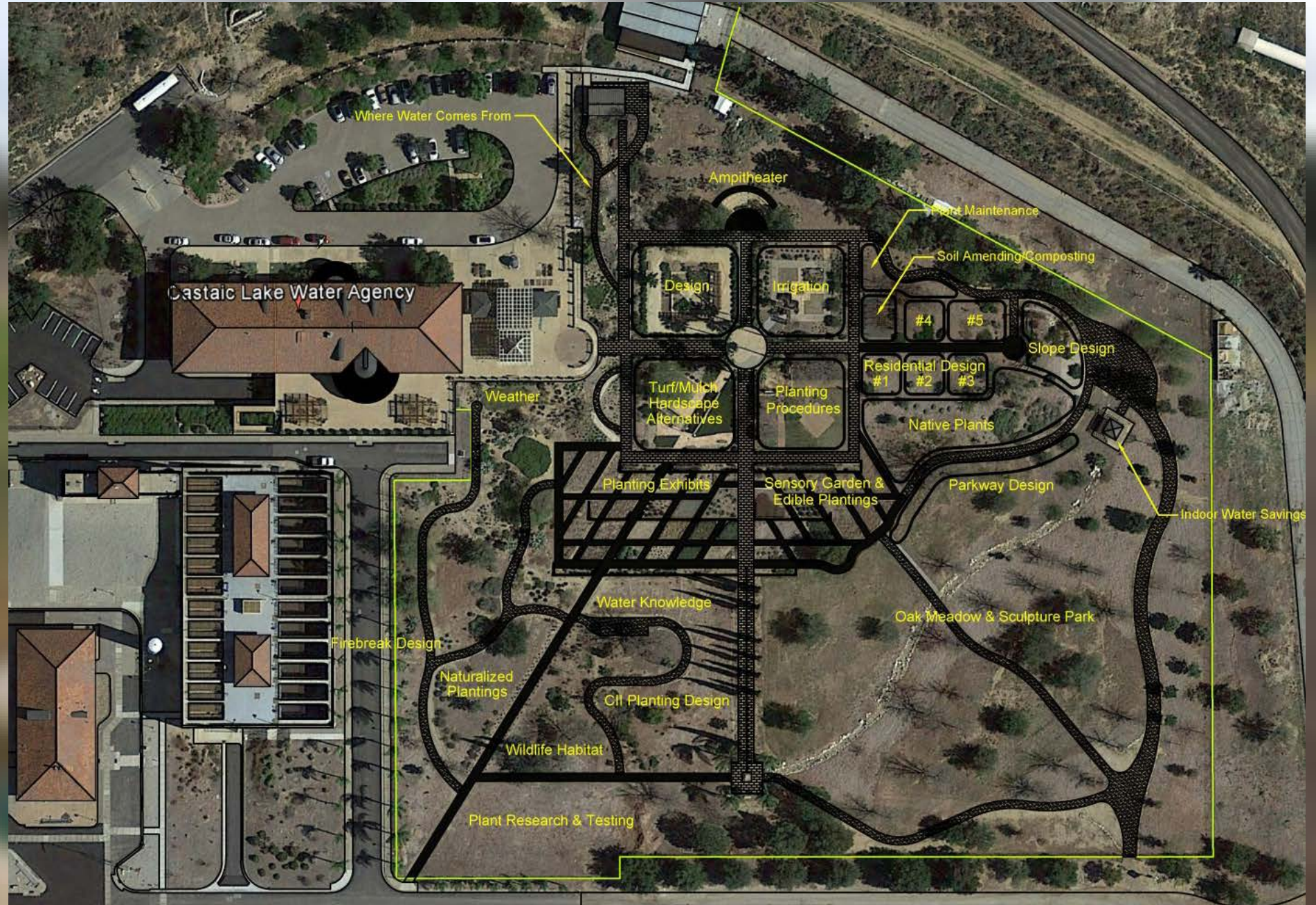


Groundwork

- Assessed Three Options
- Leveraged Legacy Work
- Incorporated Stakeholder Input
 - Committee Recommendation
 - Management Review
 - Water Conservation Educators

Option A

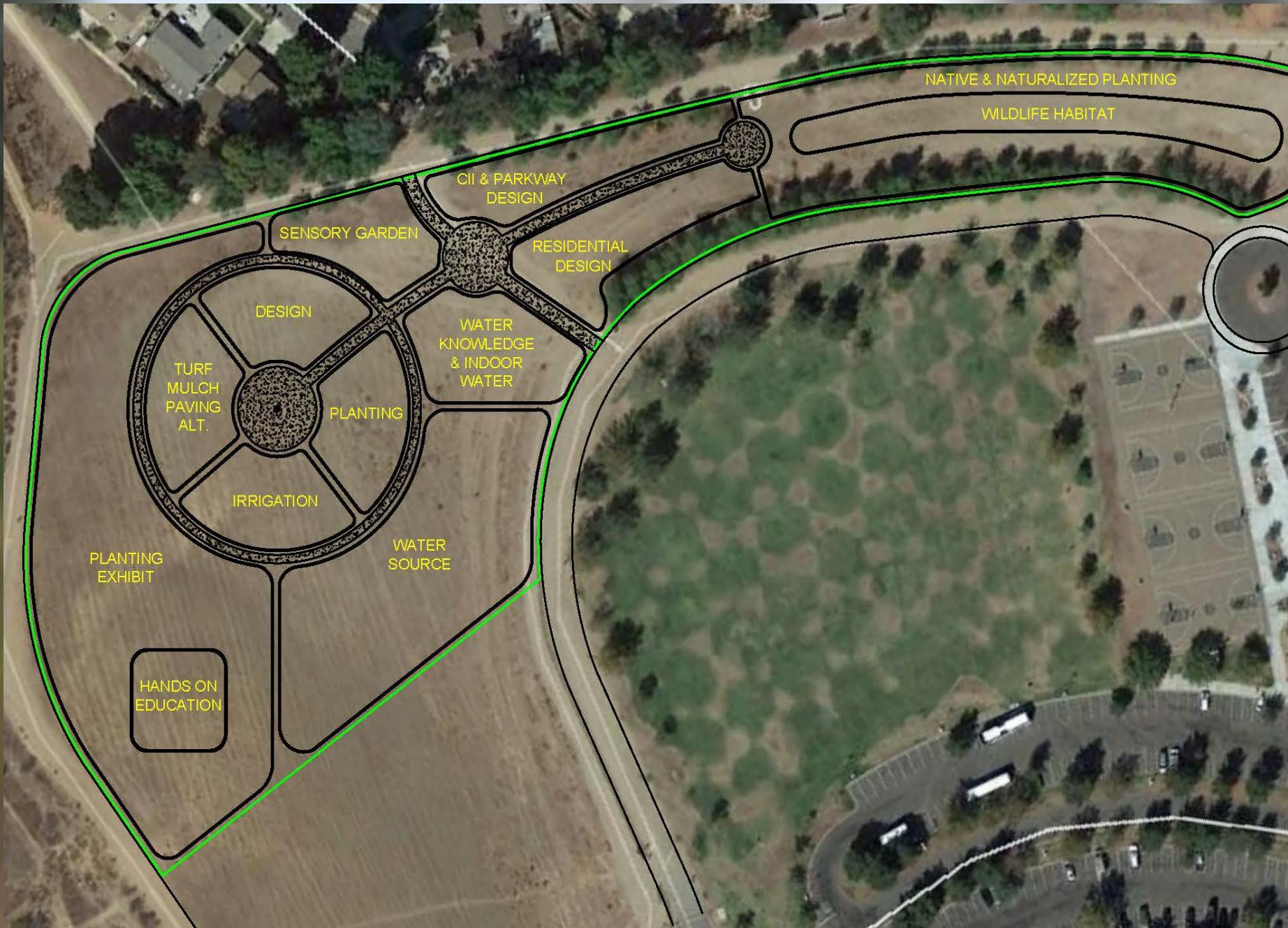
- Conceptual Garden Design
- Uses Current Location
- Improves Education Resources
- Limited Access
- Estimated Cost = \$3.5 Million



Option A (Cons)

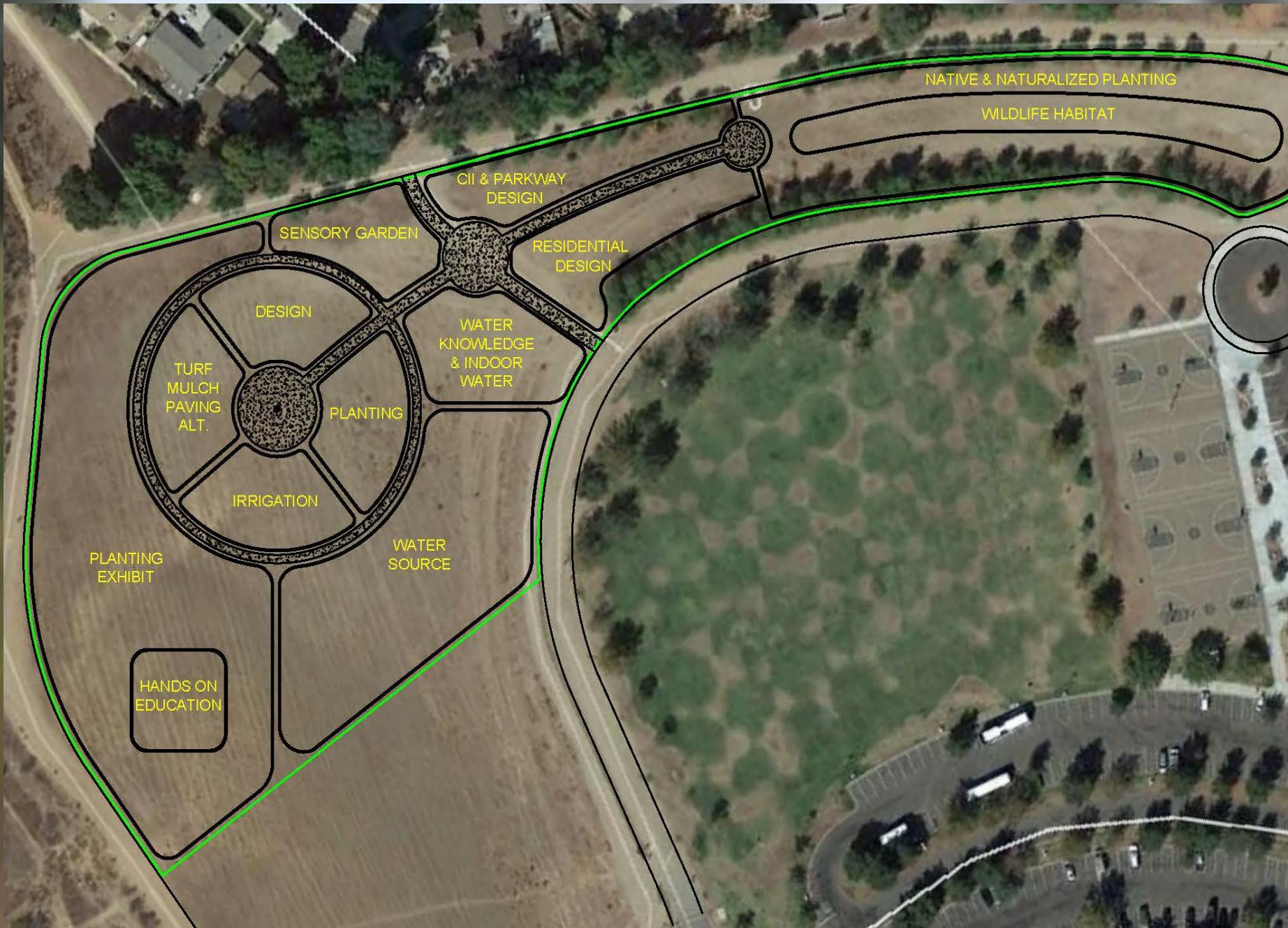
- Persistent Security Concerns
- Limited Parking
- Limited Public Access
- Multiple Check-Ins





Option B

- Central Park Garden Design
- Maintains Current Facility
- Improves Education Resources
- Improved Access
- Estimated Cost = \$3.9 Million



Option B (Cons)

- Persistent Security Concerns
- Limited Education Access
- Visitor Safety Concerns
- Requires Full Development

Option C

- Scaled Garden & Pocket Parks
- Utilizes Current Area
- Reduces Size (~8 acres to <1acre)
- Modernizes Landscape and Irrigation Practices



Option C

- Scaled Garden & Pocket Parks
- Improves Education Resources
- Expands Access
- Estimated Cost = \$1.4 Million



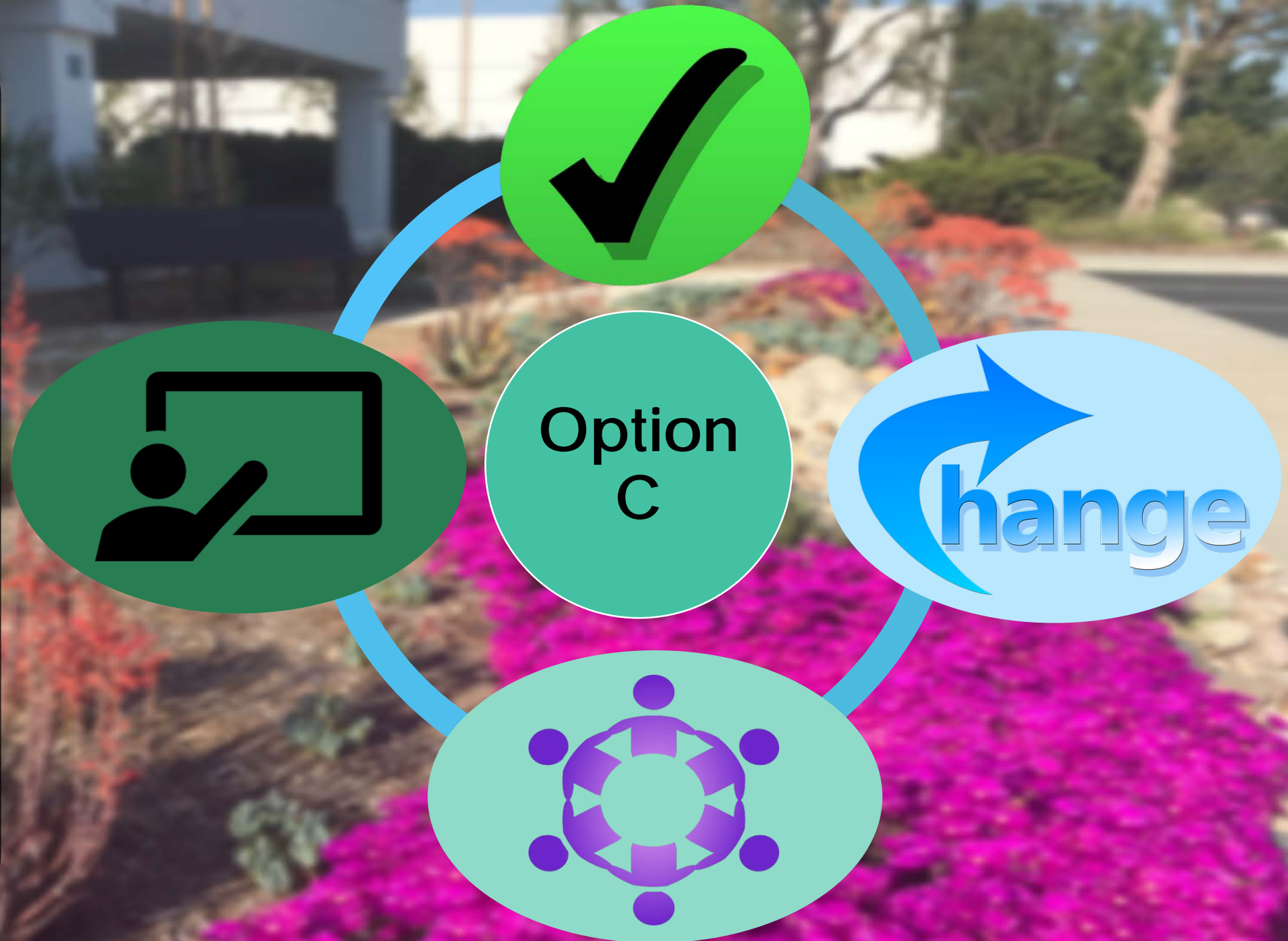


Option C

- Scaled Garden & Pocket Parks
- Rockefeller Location
- City/County /HOA Partnerships
- Paradigm Shift

Option C

- Integrates with Current Practices
- Facilitates Change
- Increases Community Visibility
- Provides Interactive Models



Option C

- 2 Locations Identified
- Bridgeport Park
- Jo Ann Darcy Library
- MOU in Progress
- Collaborative Design Efforts



Bridgeport Park

~ 15,000 sf

Jo Ann Darcy Library

~ 3,000 sf

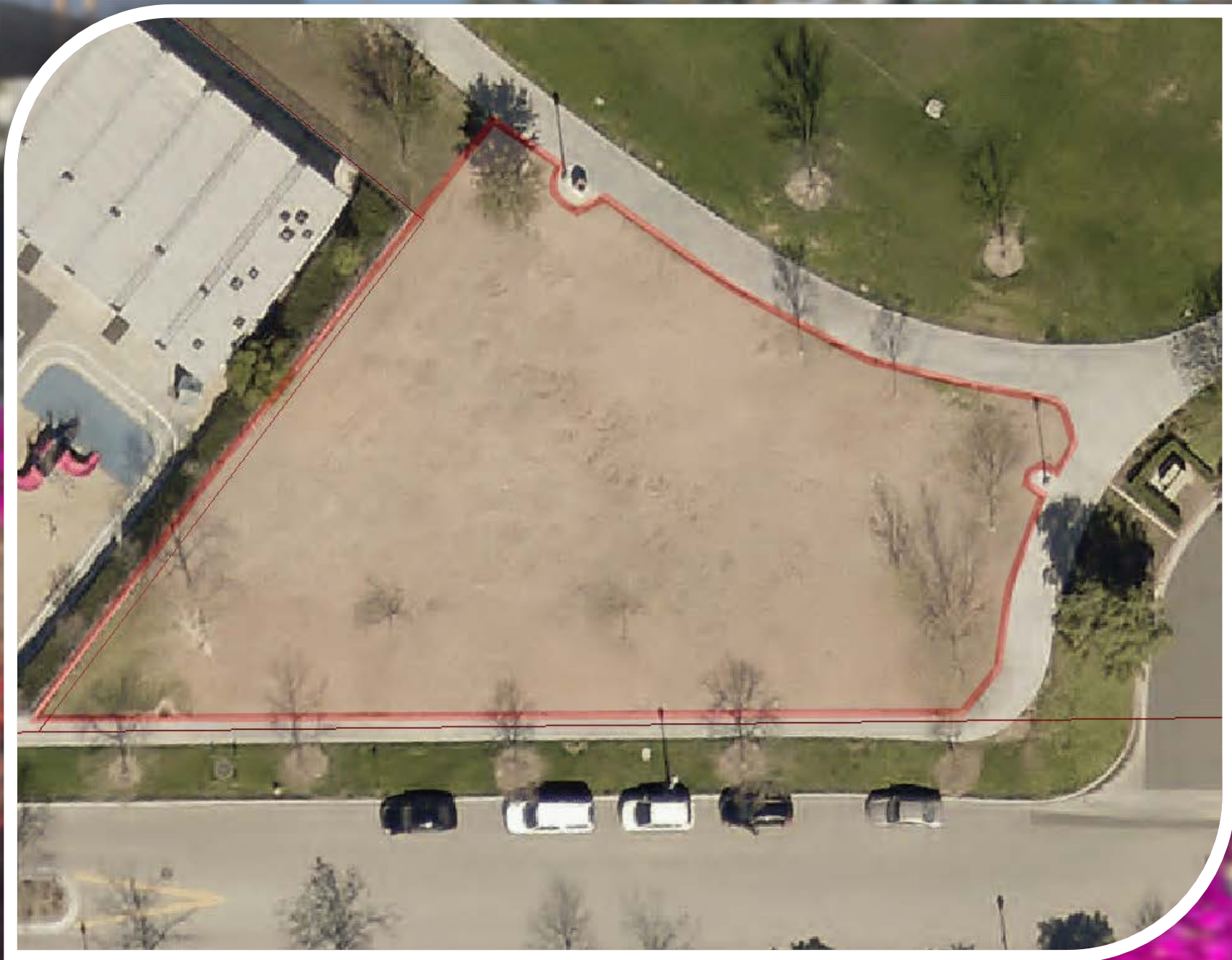


Bridgeport Park

- Design - \$20k
- Demo - \$10k
- Plants - \$30k
- Irrigation - \$10k
- Pathways & Pad - \$12.5k
- Signage – \$5k
- Mulching – \$5k
- Benches/Trash – \$5k

Total Estimate - \$97,500

**Annual Premium
Maintenance = \$5-10k**



Jo Ann Darcy Library

- Design - \$10k
- Demo - \$5k
- Plants - \$5k
- Irrigation - \$2.5k
- Signage - \$2.5k
- Mulching - \$1.5k

Total Estimate - \$26,500

**Annual Premium
Maintenance = \$2-5k**



Next Steps

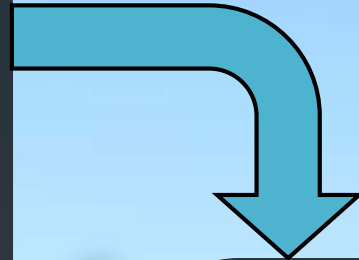


Next Steps

- Committee/Board Feedback & Approvals
- Procurement & Partnerships
- Phased Implementation

Phase 1 (FY 18/19)

- Project Inception
- Secure Pocket Park Partners
- Committee/Board Approvals



Phase 2 (FY 19/20)

- Pocket Park Project Implementation
- Conservatory Garden Design & Planning
- RFP Selection & Committee/Board Approvals



Phase 3 (FY 20/21)

- Finalize Conservatory Garden
- Complete Pocket Parks
- Engage Public
- Monitor & Measure Performance

Matthew S. Dickens, MPA
Resource Conservation Manager
SCV Water

mdickens@scvwa.org

