



## BOARD MEMORANDUM

**DATE:** November 15, 2022

**TO:** SCV Water Board of Directors

**FROM:** Matthew S. Dickens, MPA *MSD*  
Sustainability Manager

**SUBJECT:** Authorize the General Manager to Execute a Construction Contract for Bridgeport Pocket Park

---

### SUMMARY

This is an updated staff report to the version submitted to the SCV Water - Water Resources and Watershed Committee in September and November 2022. During the meetings, members of the Committee posited questions pertaining to the cost, scope, and added value of the Bridgeport Pocket Park project. Additionally, staff has prepared a presentation which incorporates information from both presentations on the project's various components as well as the inquiries provided by the Committee and public during the September and November 2022 Committee meetings.

Consistent with the 2019 SCV Water Strategic Plan and in support of the Agency's water conservation engagement, education, and programmatic efforts, staff have developed plans for a water efficient demonstration garden at Bridgeport Pocket Park. Following the Request for Proposal (RFP) process, staff received four (4) proposals for park construction and staff have recognized the lowest-cost bid. Based on these findings, staff recommends that the SCV Water Board of Directors authorize the General Manager to execute a construction contract for the Bridgeport Pocket Park. The Water Resources and Watershed Committee agreed with staff's recommendation via consensus.

### DISCUSSION

Following the launch of SCV Water, the Agency directed conservation staff to evaluate refurbishment of the Conservatory Garden and determine ways and means to enhance all landscape assets to improve public awareness, education, and engagement in various conservation programs. Additionally, during the Agency's evaluation of the Lawn Replacement Program, staff conducted a customer survey and received ~1,500 responses identifying resource needs including demonstration gardens and assistance with landscape design. With this guidance, conservation staff led a cross-organizational effort to better understand the Agency's landscape assets, conservation program needs, and potential collaborative partnerships. The three-pronged strategy included the transformation of the Conservatory Garden at Rio Vista to enhance the education experience, building "pocket parks" throughout the community to demonstrate smart landscape design and irrigation practices, and to partner with other local agencies to incorporate such facilities in high-traffic areas to increase public consumption. In 2019, after a review of available locations, SCV Water and the City of Santa Clarita (City) entered a Memorandum of Understanding (MOU) to, among other items, construct a demonstration garden at Bridgeport Park. Bridgeport Pocket Park (BPP) would utilize an area within the larger park where the City had turned off irrigation during the 2011-2017 drought. BPP

is located at 23521 Bridgeport Lane and is ~16,200 square feet. A picture of the BPP location is provided below (see Figure 1).



Figure 1. Bridgeport Pocket Park Location

During the design phase, the design team incorporated a collaborative process that included SCV Water staff (Conservation, Engineering, GIS), City staff, local landscape designers, an engineering firm, and an irrigation system consultant. The goal of the collaborative design process was to provide visitors with a range of landscape designs, sustainability features (rain gardens, mulching), plant pallets (California natives, low water-using plants), and high-efficiency irrigation (HE nozzles, drip irrigation) technologies that are commonly available to residents in the valley. Additionally, BPP will include site and plant signage, an information kiosk, walking paths, park benches, and a permeable concrete pad for maintenance vehicles and to support additional programming capabilities (EV, Tiny Home, Vendors). The design process was completed in 2021 and the BPP plans are included as an attachment (Attachment 1).

In August 2022, the Conservation Team, with support from Engineering, submitted the completed design plan for RFP using PlanetBids. On September 2, 2022, SCV Water received proposals from four (4) firms for BPP construction. The table on the following page notes the firms that responded to the RFP and their cost proposals respectively.

**Table 1. SCV Water – Bridgeport Pocket Park Construction RFP Responses**

<b>Firm</b>	C.S. Legacy Construction, Inc.	United Construction & Landscape, Inc.	R.C. Beker and Son, Inc.	Marina Landscape, Inc.
<b>Cost Proposal</b>	\$373,147.60	\$389,428.36	\$390,111.97	\$426,395.00
<b>Cost per SF</b>	\$23.32	\$24.34	\$24.38	\$26.65

During the Water Resources and Watershed Committee’s September 14, 2022, meeting, staff provided a staff report and presentation detailing the Bridgeport Pocket Park project including the proposals and cost estimates received through the RFP process. Members of the committee requested information pertaining to the design process, size of the project area, scope of work, and project costs (Attachment 2). Following the meeting, staff provided project materials and responses to specific inquiries including details of the design scope, design process, bid documents, and has updated the presentation slide deck for the Committee’s review at its November 9, 2022, meeting.

During the Water Resources and Watershed Committee’s November 9, 2022, meeting, Committee members provided comments and feedback to staff regarding general support, opportunities for improvement, and budgeting and cost concerns. Additionally, staff addressed public comments received during the discussion pertaining to water usage at the site and the projects benefit to the Agency’s water conservation program. Staff responded to these concerns by noting the pocket parks low-water using plant palette coupled with High-Efficiency irrigation uses 40-60% less water than turfgrass. Further, the pocket park will provide inspiration and demonstration to residential and commercial customers seeking to transform their landscapes, but who are unaware of available practices or design styles. The Water Resources and Watershed Committee, via consensus, agreed with staff’s recommendation to authorize the General Manager to execute a construction contract for Bridgeport Pocket Park. The Committee requested the item be presented to the SCV Water Board of Directors at the November 15, 2022 regularly scheduled meeting.

**FINANCIAL CONSIDERATIONS**

BPP funding for Fiscal Year 2022/2023 was estimated at \$230,000. The lowest bid for BPP construction is \$373,147.60, which is \$143,147.60 above the current budgeted amount. Expenses beyond the budgeted amount will require a transfer of available funds from another project. Budget from the Conservatory Garden and Education Experience for FY 2022/2023 would be available for the BPP.

**STATEGIC PLAN OBJECTIVE(S)**

**Goal A. Customer/Community:** Implement policies supporting social, quality of life, and environmental values of the community.

*Strategy A.2 Proactively communicate with and engage our community on water matters of importance to the region positioning SCV Water as a leading resource and reliable authority on water issues.*

A.2.6 Raise awareness of and demand for conservation programs (e.g. water conservation campaign(s) and related media buys, public and school education programs, participation at public events, SCV Water website, e-newsletter and social media, self-guided landscape tour, conservatory garden, etc.)

**Goal C. Water Supply and Resource Sustainability:** Implement programs to ensure the service area has reliable and sustainable supplies of water.

*Strategy C.4 Advance demand management and achieve State mandated water use efficiency targets.*

C.4.9 Promote drought tolerant and water efficient landscapes out into the community

C.4.10 Communicate with customers the message that “conservation is a way of life”

### **CEQ CONSIDERATION**

The Project, aka the whole of the action, qualifies for an exemption under CEQA Guidelines Section 15301 (c) Class 1 - Existing Facilities because it is a minor alteration of an existing public facility as it concerns the modification of an existing sidewalk and bicycle path involving negligible or no expansion of use. The project also qualifies for an exemption under Section 13504(b) Class 4 - Minor Alterations to Land as the Project consists of new landscaping which is replacing existing conventional landscape with water efficient landscape.

### **RECOMMENDATION**

That Water Resources and Watershed Committee recommends that the Board of Directors authorize the General Manager to execute a construction contract for Bridgeport Pocket Park.

Attachments

M65









BRIDGEPORT POCKET PARK  
 23521 BRIDGEPORT LANE  
 CA 91355

ELEMENTARY SCHOOL  
 25321 BRIDGEPORT LANE,  
 CA 91355

BRIDGEPORT LN.

**CONSTRUCTION NOTES:**

- ① REMOVE EXIST. GRASS AND INSTALL KURAPIA (12'-18" PLUGS), PER SPECIFICATION SECTION XXXX

REVISIONS		NO.	DESCRIPTION	DATE	BY



SANTA CLARITA VALLEY WATER AGENCY  
 WATER RESOURCES SECTION  
 26501 SUMMIT CIRCLE  
 SANTA CLARITA, CA. 91350  
 (661) 297-1600

**BRIDGEPORT POCKET PARK**

**EXISTING SITE PLAN**

DATE: **AUGUST 2020**  
 PROJECT NO.: **200701**  
 SHEET: **C-01**  
**2 of 11**





A B C D E F G H

REVISIONS		SCALES		DATE		BY	
NO.	DESCRIPTION	DATE	BY	DATE	BY	DATE	BY

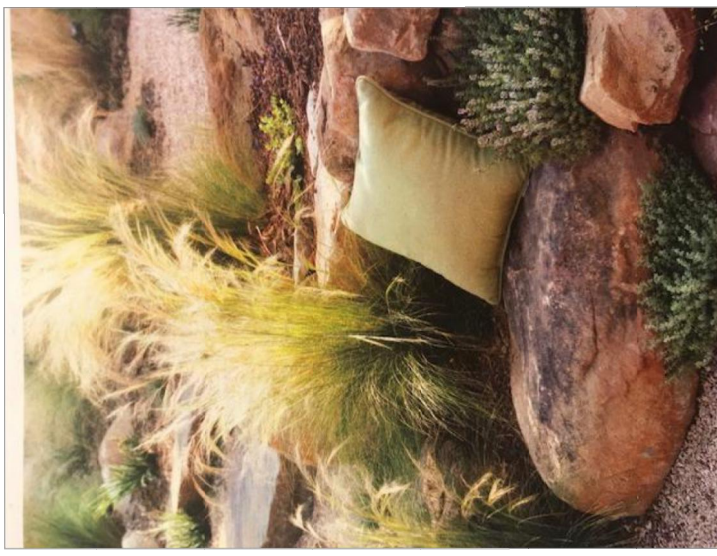
  

<b>SANTA CLARITA VALLEY WATER AGENCY</b> WATER RESOURCES SECTION 26501 SUMMIT CIRCLE SANTA CLARITA, CA. 91350 (661) 297-1600		<b>BRIDGEPORT POCKET PARK</b> GARDEN AREA PLAN	
DATE: <b>AUGUST 2020</b> PROJECT NO.: <b>200701</b> SHEET: <b>C-02</b> 3 of 11		NTS	



0 1 2 3 4 A B C D E F G H

# GARDEN NO. 1



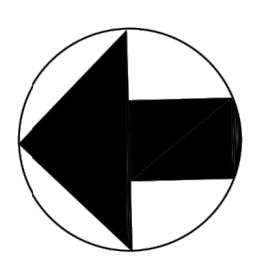
BOTANICAL NAME	COMMON NAME	SIZE	QTY.	NOTES
<i>Calyptochus hartwegii</i>	Sundrops	1 Gall	38	Low growing border plants Western native.
<i>Dianthus</i>	Blush Poppy	15 Gall	1	Low growing border plants Western native.
<i>Rhus ovata</i>	Sugarbush	15 Gall	1	
<i>Verbena ilicina</i>	Cedros Island Verbena	1 Gall	6	
<i>Salvia splendens</i>	Island Snapdragon	5 Gall	5	Needs Excellent Drainage. Prep each planting hole with gravel.
<i>Trichostema lanatum</i>	Blue Whooly Curtis	5 Gall	3	
<i>Mulleinbergia rigens</i>	Deer Grass	5 Gall	9	
<i>Zauschneria californica</i>	California Luchisia	5 Gall	4	
<i>Encelia californica</i>	Coast Sunflower	5 Gall	9	
<i>Salvia chrysantha</i>	California Blue Sage	5 Gall	4	
<i>Hesperaloe parviflora</i>	Red Yucca	5 Gall	3	
<i>Parkinsonia 'Desert Museum'</i>	Palo Verde Desert Museum	24" Box	1	
<i>Penstemon heterophyllus 'Margenta BOP'</i>	Foothill penstemon M. BOP	1 Gall	11	This may need a French Drain or appropriate grading.
<i>Heteromeles arbutifolia</i>	Toyon	15 Gall	5	Works well under Oak.
<i>Ribes sanguineum</i>	Red Flowering Currant	5 Gall	7	
<i>Ceanothus 'Yankee Point'</i>	California Wild Lilac 'Yankee Point'	1 Gall	28	
<i>Ceanothus 'Concho'</i>	California Wild Lilac	5 or 15 Gall	1	
<i>Salvia alba</i>	California White Sage	5 Gall	6	
<i>Iris douglasiana</i>	Douglas Iris	1 Gall	15	
<i>Salvia apertiflora</i>	Hummingbird Sage	1 Gall	21	
<i>Eriobotrya deflexa</i>	Bronze Loquat	24" Box	1	Standard Tree Form SCV approved.
<i>Salvia fernandea</i>	Meady Cup	1 Gall	5	
<i>Mimulus Jolly Bean Hybrid</i>	Monkey Flower	1 Gall	5	Mimic Tom's selection



REVISIONS	BY
December 10, 2019 - Draft	MBJ
January 16, 2020	MBJ

SCV  
 Bridgeport Pocket Park  
 Santa Clarita, CA

Songbird Garden Design  
 Mary Elizabeth - Landscape Designer  
 Newhall, CA  
 Tel: 818-854-5562



NORTH

DATE: AUGUST 2020 PROJECT NO.: 200701 SHEET: C-03 4 of 11			
BRIDGEPORT POCKET PARK LANDSCAPE PLAN GARDEN AREA No. 1			
SANTA CLARITA VALLEY WATER AGENCY WATER RESOURCES SECTION 26501 SUMMIT CIRCLE SANTA CLARITA, CA. 91350 (661) 297-1600			
REVISIONS NO. DESCRIPTION DATE BY			





**LEGEND:**  
 GC GROUND COVER  
 SS SMALL SHRUBS  
 MS MEDIUM SHRUBS  
 LS LARGE SHRUBS

ALL PLANTINGS TO BE CALIFORNIA NATIVES AND DROUGHT TOLERANT

SCALE:  
 10' 20'

Plant List for Garden Area #2

<b>TREES</b>	(3)	24" box	Chilopsis linearis - Desert Willow
	(1)	24" box	Lagerstromia indica 'Purple' multi-trunk - Purple Crepe Myrtle
<b>SHRUBS</b>	(9)	15 gallon	Arctostaphylos densiflora 'Howard McMinn' - NCN
	(8)	5 gallon	Arctostaphylos 'Emerald Carpet' - NCN
	(7)	1 gallon	Artemisia 'Powis Castle'
	(14)	5 gallon	Dietes vegeta - Forsnight Lily
	(6)	1 gallon	Epilobium canum 'Bert's Bluff' - California Fuchsia
	(5)	5 gallon	Lomandra 'Breeze' - Dwarf Mat Rush
	(3)	5 gallon	Myrtus communis 'Compacta' - NCN
	(14)	5 gallon	Rosmarinus officinalis 'Majorca Pink' - NCN
	(5)	1 gallon	Santolina ericoides 'Lemon Queen' - NCN
	(12)	1 gallon	Teucrium chamaedrys - Germander
<b>GROUND COVER</b>	(20)	1 gallon	Casuarina 'Cousin it' - NCN
	(30)	1 gallon	Lantana montevidensis - Purple Trailing Lantana
	(80)	4" container	Sisyrinchium bellum - Blue-eyed Grass

NOTE:  
 1. All materials can be located and purchased from BambooPipeline.com

POCKET PARK  
 BRIDGEPORT, CA  
 SANTA CLARITA, CA

No.	Revision/Issue	Date

File Name and Address  
 LE Design  
 23257 Maple Street  
 Newhall, CA 91321

NO.	REVISIONS	DESCRIPTION	DATE	BY

SCV WATER

SANTA CLARITA VALLEY WATER AGENCY  
 WATER RESOURCES SECTION  
 26501 SUMMIT CIRCLE  
 SANTA CLARITA, CA. 91350  
 (661) 297-1600

BRIDGEPORT POCKET PARK  
 LANDSCAPE PLAN  
 GARDEN AREA No. 2

DATE: AUGUST 2020  
 PROJECT NO: 200701  
 SHEET: C-04  
 5 of 11











# IRRIGATION NOTES

- ALL BASE INFORMATION HAS BEEN TAKEN FROM DRAWINGS PROVIDED BY OAKRIDGE LANDSCAPE AND AS-BUILT DRAWINGS OF THE EXISTING IRRIGATION DRAWINGS.
  - REFER TO PROJECT SPECIFICATIONS FOR INSTALLATION AND MATERIAL REQUIREMENTS AND METHODOLOGY.
  - CONTRACTOR SHALL FIELD VERIFY PRESSURE AT POINT-OF-CONNECTION LOCATIONS FOR EACH TAP PRIOR TO ORDERING MATERIALS OR STARTING ANY IRRIGATION INSTALLATION AND NOTIFY CONSULTANT OF ANY DIFFERENCE OF 10 PSI.
  - SYSTEM HAS BEEN DESIGNED BASED ON THE STATIC WATER PRESSURE NOTED ON THE PLANS. IF CONTRACTOR FAILS TO NOTIFY CONSULTANT OF THE STATIC PSI DIFFERENCE, HE ASSUMES FULL RESPONSIBILITY FOR ANY SYSTEMAL TERRATIONS AS DIRECTED BY THE CONSULTANT.
- | PSI     | GPM | METER SIZE                                     | TOTAL LANDSCAPED AREA        |
|---------|-----|--|------------------------------|
| POC #15 | 100 | xx GPM MAX. DEMAND (demonstration garden only) | 3' (existing irrigated area) |
- CONTRACTOR TO FIELD VERIFY SIZE, LOCATION AND QUANTITY OF EXISTING STREET SLEEVES INSTALLED UNDER STREET IMPROVEMENT PACKAGE PRIOR TO INSTALLATION OF IRRIGATION SYSTEM, AND NOTIFY CONSULTANT OF ANY DIFFERENCES.
  - INSTALL IRRIGATION SLEEVES UNDER ALL SIDEWALKS PER THE FOLLOWING SCHEDULE:
 

PIPE SIZE OR WIRE QUANTITY	REQUIRED SLEEVES
1/2" SDR 35 PVC	1-2

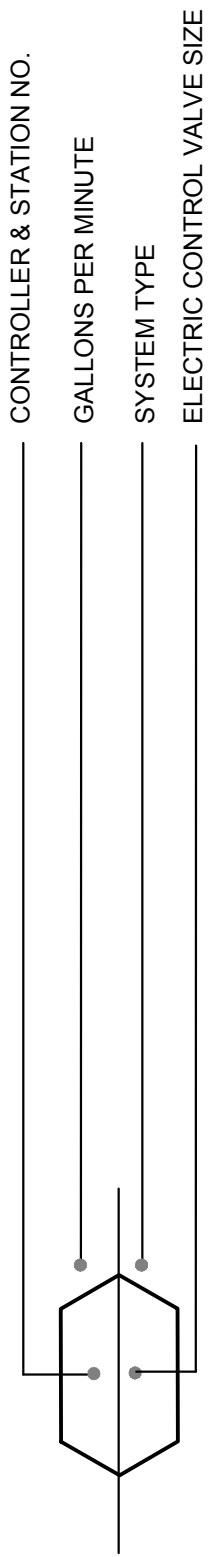
ALL OTHER SLEEVE SIZES SHALL BE 2X LARGER THAN PIPE AND SHALL BE SCH 40 PVC.
  - LATERAL PIPING SHALL BE INSTALLED 12" BELOW GRADE USING SCH 40 BE PIPE.
  - UTILIZE EXISTING VALVE LOCATIONS FOR THE NEW VALVES INDICATED. EXISTING VALVES LOCATION ARE APPROXIMATE AND ARE BASED ON THE LOCATIONS INDICATED ON THE AS-BUILT DRAWINGS. UTILIZE EXISTING VALVE WIRING AT EACH OF THESE LOCATIONS.

# IRRIGATION SCHEDULE

SYMBOL	MANUFACTURER	MODEL NUMBER	DESCRIPTION	PSI	GPM	RADIUS	PRECIP.
	HUNTER	MP3000 90° NOZ PROS-12-PRS30-CV	MP ROTATOR NOZZLES ON 12" PRES. REG. POP-UP BODY	40	0.86, 1.93	20-30" per spacing	0.43" /hr
	HUNTER	MP800 360° NOZ PROS-12-PRS30-CV	MP ROTATOR NOZZLES ON 6" PRES. REG. POP-UP BODY	40	0.23, 0.42	6"-10" per spacing	0.83" /hr
	HUNTER	MP3000 90° NOZ PROS-12-PRS40-CV	MP ROTATOR NOZZLES ON 12" PRES. REG. POP-UP BODY	40	0.86, 1.93	22-30" per spacing	0.43" /hr
	HUNTER	MP800 360° NOZ PROS-12-PRS40-CV	MP ROTATOR NOZZLES ON 6" PRES. REG. POP-UP BODY	40	0.23, 0.42	6"-10" per spacing	0.83" /hr
	HUNTER	MP3000 90° NOZ PROS-12-CV	MP ROTATOR NOZZLES ON 12" PRES. REG. POP-UP BODY	40	0.86, 1.93	22-30" per spacing	0.43" /hr
	HUNTER	MP800 360° NOZ PROS-12-CV	MP ROTATOR NOZZLES ON 6" PRES. REG. POP-UP BODY	40	0.23, 0.42	6"-10" per spacing	0.83" /hr
	HUNTER	RZWS-18-25	ROOT ZONE WATERING SYSTEM TWO (2) PER TREE	30	0.25 EA. (TWO PER TREE)	0'	
	APPROVED	SCH 40 BE - ALL 3/4"					
	RAINBIRD	XFS-06-18-XX	PVC PIRBLE TREE LATERAL PIPING TO SUPPLEMENTARY TREE IRRIGATION HEADS				
	RAINBIRD	XFF-TEE, XFF-ELBOW	IN LINE EMITTER TUBING 18" O.C. ROW SPACING		15	0.6 GPH	0.43
	AS DETAILED	AS DETAILED	SURFACE MOUNTED ELL, TEE OR CROSS CONNECTION				
	AS DETAILED	AS DETAILED	PVC INTAKE/EXHAUST HEADER W/ XFF-MA-050 ADAPTER FITTINGS				
	BUCKNERSUPERIOR	950 DWIB-100	DRIP VALVE ASSEMBLY				
	BUCKNERSUPERIOR	950 PRS	CONTROL VALVE PLANS FOR SIZE SEE REGULAR FOR AT 50 PSI				
	PER DETAIL		DRIP LINE FLUSH VALVE				
	EXISTING	SCH 40 BE/CL 315	PRESSURE SUPPLY PIPING - SPEARS OR EQUAL				
	APPROVED	SCH 40 BE	PVC LATERAL LINE (SIZE PER PLAN)(SEE NOTE #9) SPEARS OR EQUAL				
	APPROVED		PVC IRRIGATION SLEEVE FOR BELOW PAVING APPLICATIONS (SEE NOTE #4) SPEARS OR EQUAL				
	RAINBIRD	AVR050	AIR/VACUUM RELIEF VALVE INSTALL AT HIGHEST POINT				

NOTE: ALL FITTINGS, NIPPLES AND UNIONS TO BE LASCO OR EQUAL

REFER TO NOTES



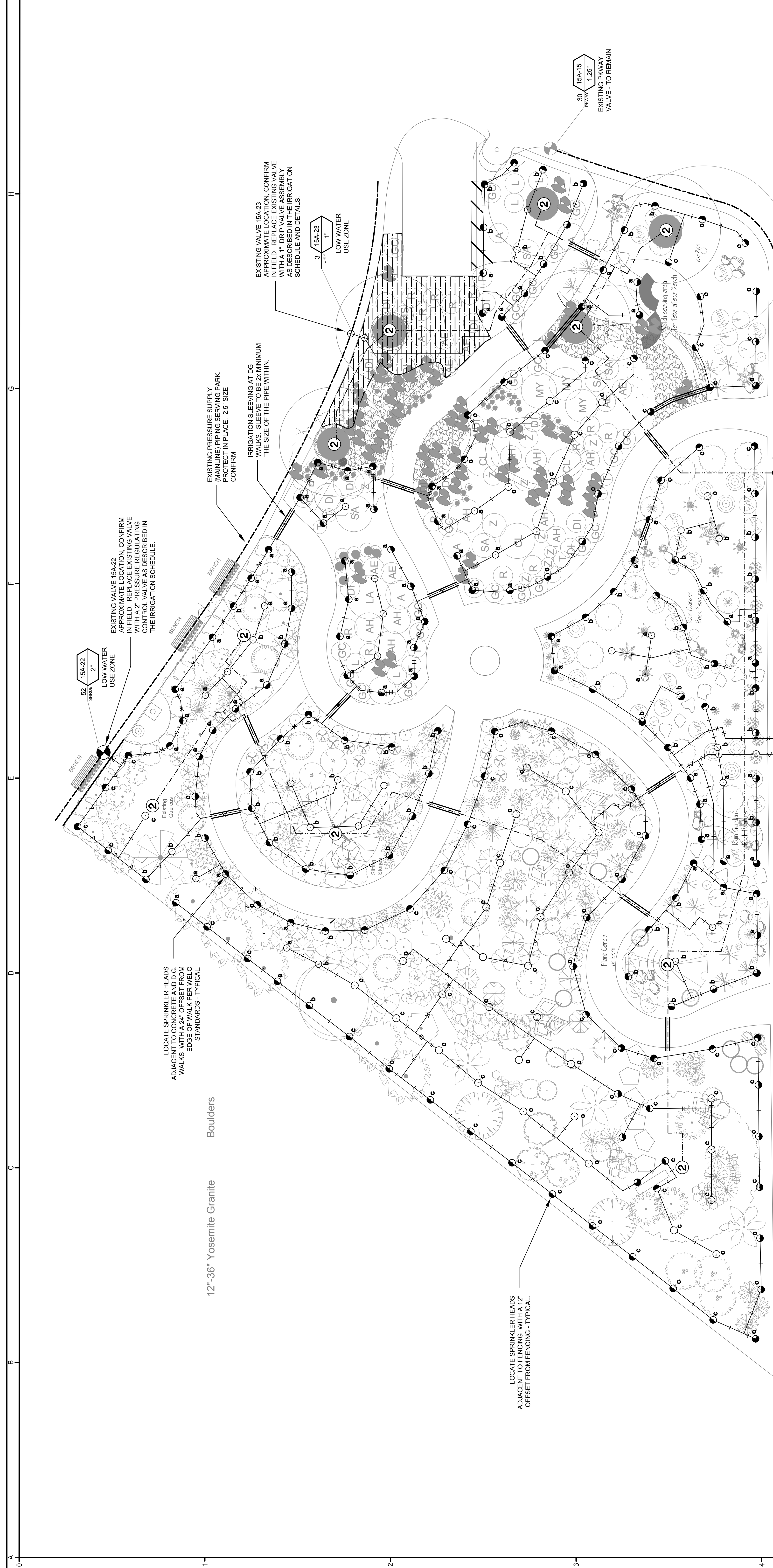
ALL IRRIGATION CONTROL VALVES SHALL BE LOCATED IN SHRUB AREAS. SETBACK FROM FRONT EDGE OF EACH VALVE BOX IS TO BE A MINIMUM OF 1'-0" FROM THE EDGE OF PAVING OR TURF AREAS WHERE SPACE ALLOWS.

LATERAL PIPE SIZING IS INDICATED BY THE FOLLOWING SYMBOLS:  
 3/4" - I    1" - II    1-1/4" - III    1-1/2" - X    2" - V    2-1/2" - VI  
 ALL BUBBLER SYSTEM PIPING SHALL BE 3/4" UNLESS OTHERWISE NOTED AS 1".

- NOTES:**
- Refer to Sheet LI - 1 for Irrigation Schedule.
  - Refer to Sheet LI - 2 for Irrigation Plans.
  - Refer to Sheet LI - 3 for Irrigation Details.
  - Refer to Sheet LI - 4 for Irrigation Specifications

<p>SANTA CLARITA VALLEY WATER AGENCY WATER RESOURCES SECTION 26901 SUMMIT CIRCLE SANTA CLARITA, CA. 91350 (661) 259-2737</p>				<p>810 Los Valencos Blvd., Suite 204 San Marcos, California, 92069 Ph: (760) 950-1900 Fax: (760) 950-1999</p>	
DESIGNED BY:		DRAWN BY:		CHECKED BY:	
REVISIONS		SCALES		DATE	
NO.	DESCRIPTION	DATE	BY	DATE	BY
<p>BRIDGEPORT POCKET PARK</p> <h2>IRRIGATION SCHEDULE AND NOTES</h2>			<p>DATE: AUGUST 2020</p> <p>PROJECT NO: 200701</p> <p>SHEET: LI-1</p> <p>8 OF 11</p>		





**NOTES:**

1. Refer to Sheet LI - 1 for Irrigation Schedule.
2. Refer to Sheet LI - 2 for Irrigation Plans.
3. Refer to Sheet LI - 3 for Irrigation Details.
4. Refer to Sheet LI - 4 for Irrigation Specifications

LATERAL PIPE SIZING IS INDICATED BY THE FOLLOWING SYMBOLS:

3/4" - I	1" - II	1-1/4" - III	1-1/2" - X	2" - V	2-1/2" - VI
----------	---------	--------------	------------	--------	-------------

ALL BUBBLER SYSTEM PIPING SHALL BE 3/4" UNLESS OTHERWISE NOTED AS 1".

REVISIONS	
NO.	DESCRIPTION

DESIGNED BY: \_\_\_\_\_

DRAWN BY: \_\_\_\_\_

CHECKED BY: \_\_\_\_\_

**SCV WATER**

SANTA CLARITA VALLEY WATER AGENCY  
 WATER RESOURCES SECTION  
 26601 SUMMIT CIRCLE  
 SANTA CLARITA, CA. 91350  
 (661) 259-2737

**OAKRIDGE LANDSCAPE**

**BRIDGEPORT POCKET PARK**

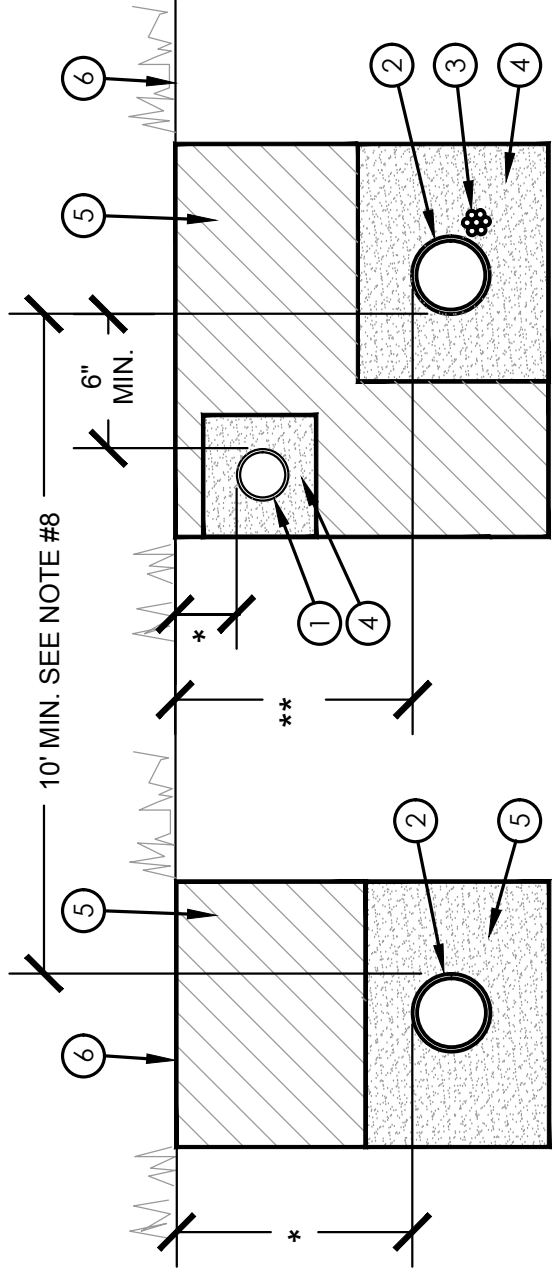
**IRRIGATION PLAN**

**Aqua Commercial Irrigation**  
 810 Los Vallecitos Blvd., Suite 204  
 San Marcos, California 92069  
 Ph: (760)750-1900 Fax: (760)750-1999

DATE: AUGUST 2020  
 PROJECT NO: 200701  
 SHEET: LI-2  
 9 OF 11





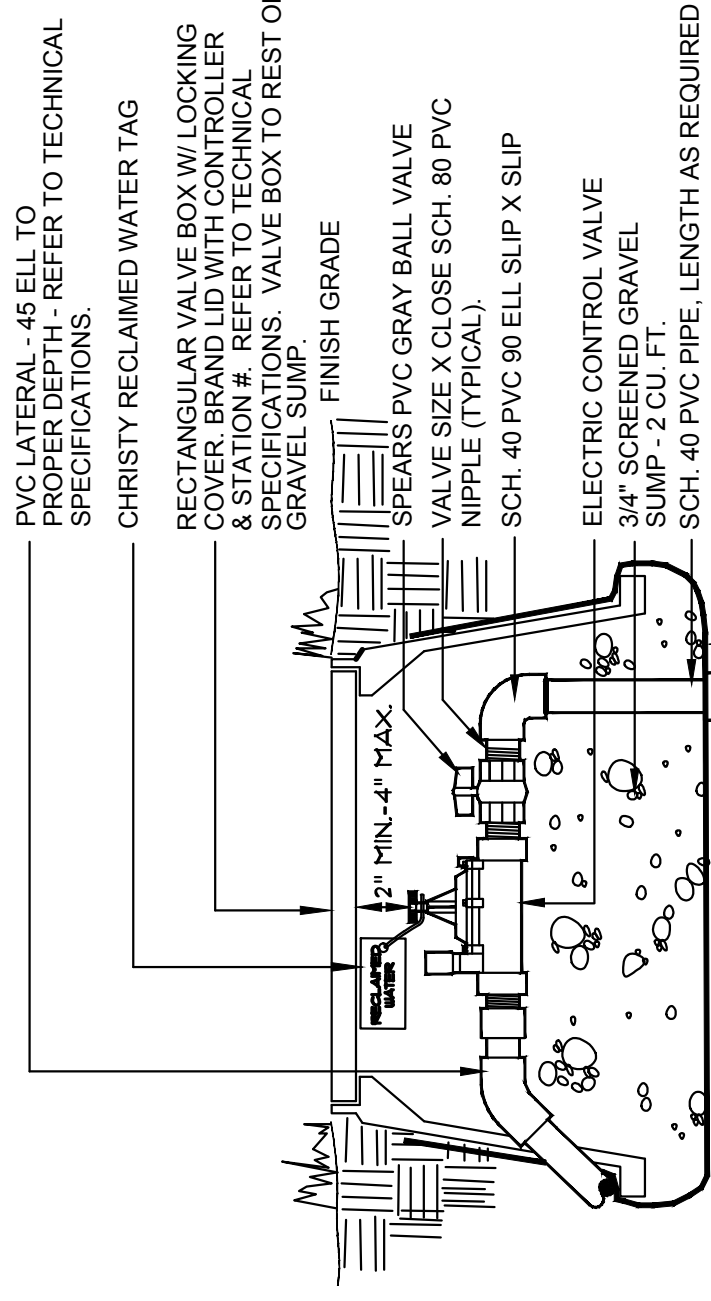


- LEGEND**
1. NON-PRESSURE LATERAL LINE PIPING.
  2. PRESSURE MAINLINE PIPING FOR POTABLE WATER.
  3. CONTROL WIRE BUNDLE AND TAPE EVERY 10 FEET. INSTALL ADJACENT TO PRESSURE MAINLINE.
  4. PROVIDE CLEAN BACKFILL 2' UNDER AND 4' AROUND PIPE.
  5. SEE IRRIGATION SPECIFICATIONS FOR BACKFILL AND COMPACTION REQUIREMENTS.
  6. FINISH GRADE.

- \* 12" MINIMUM BACKFILL DEPTH FOR NON-PRESSURE LATERAL LINES
- \*\* MINIMUM BACKFILL DEPTHS FROM GRADE TO TOP OF MAINLINE:  
24" FOR PIPE SIZES 3" AND LARGER  
18" FOR PIPE SIZES 2 1/2" AND SMALLER.

## 1 TRENCHING

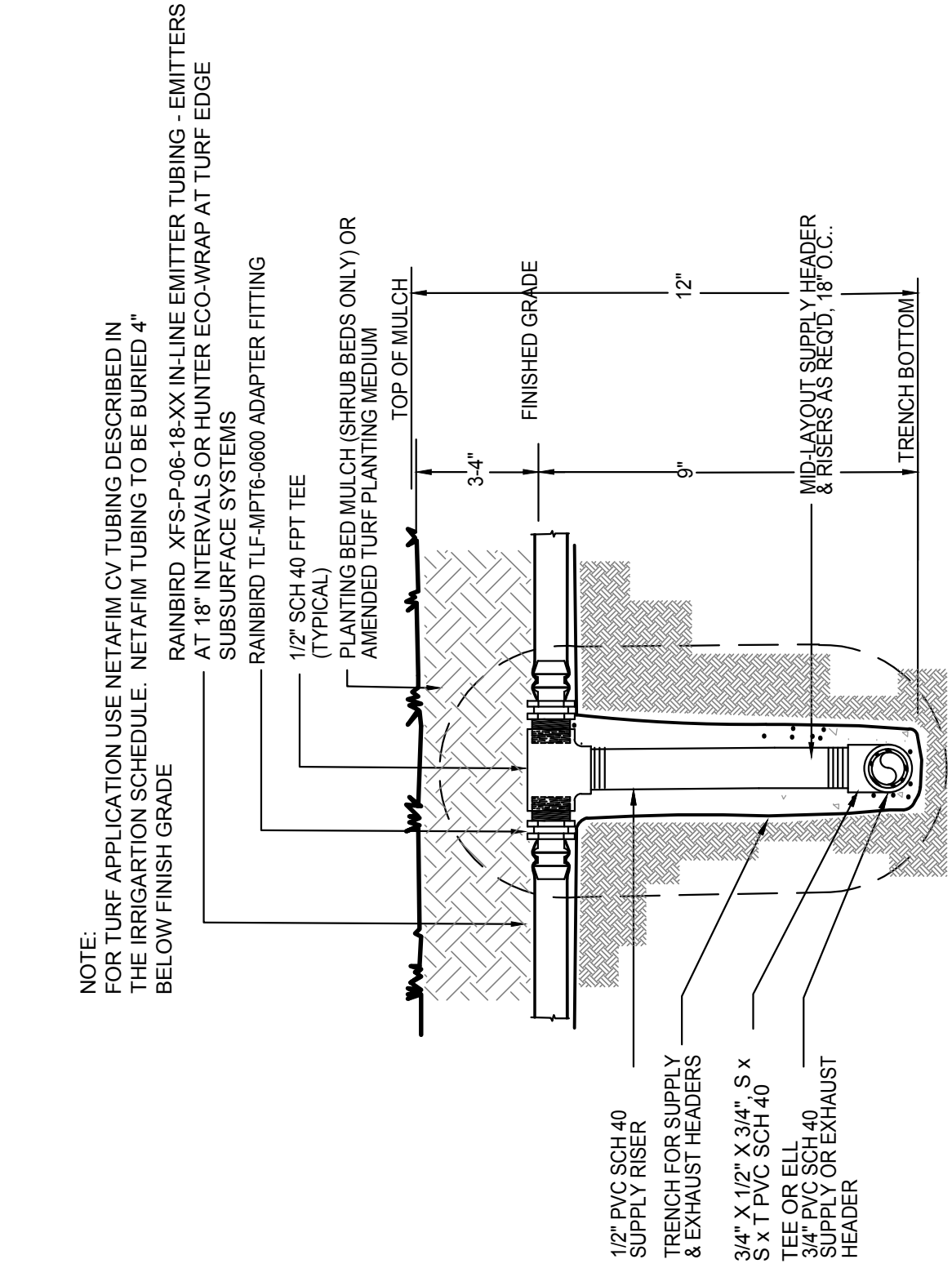
NTS



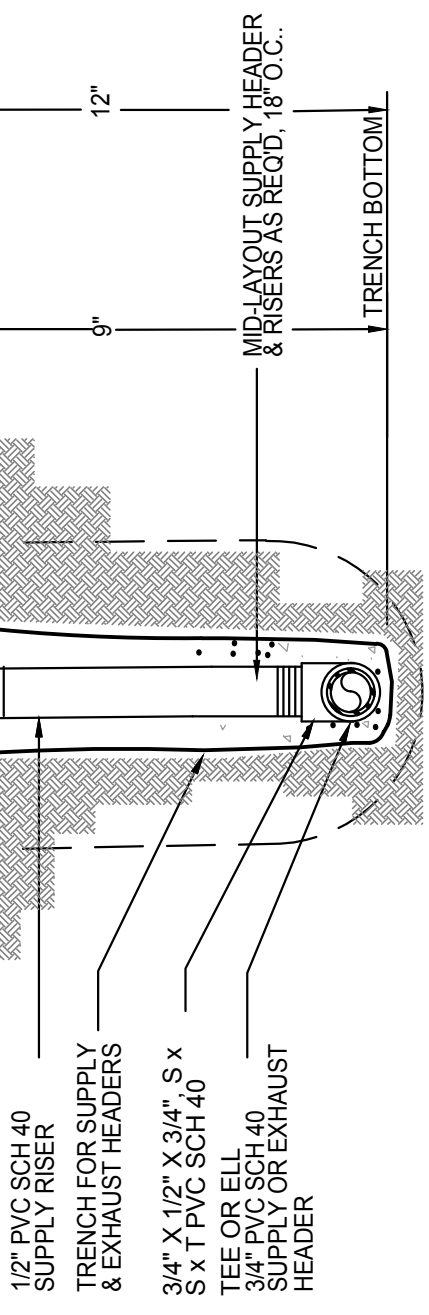
1. NOTE: DIAMETERS OF RISER, FITTINGS, BALL VALVE AND NIPLLE SHALL EQUAL CONTROL VALVE DIAMETER. LOOP-2 WIRE PATH FROM CONTROLLER INSIDE EACH VALVE BOX 24" DIAMETER LOOP (MIN).
2. ALL WIRING TO BE INSTALLED PER LOCAL CODE.
3. PROVIDE EXPANSION COILS AT EACH WIRE CONNECTION WITH VALVE BOX (WRAP AROUND 1/2" PIPE 15 TIMES. REMOVE PIPE).
4. COMPACT SOIL AROUND VALVE BOX TO SAME DENSITY AS UNDISTURBED ADJACENT SOIL.
5. REFER TO DETAIL #19 ON SHEET LI-5.02 FOR VALVE DECODER, WIRING AND GROUNDING REQUIREMENTS.

## 2 ELECTRIC CONTROL VALVE

NTS

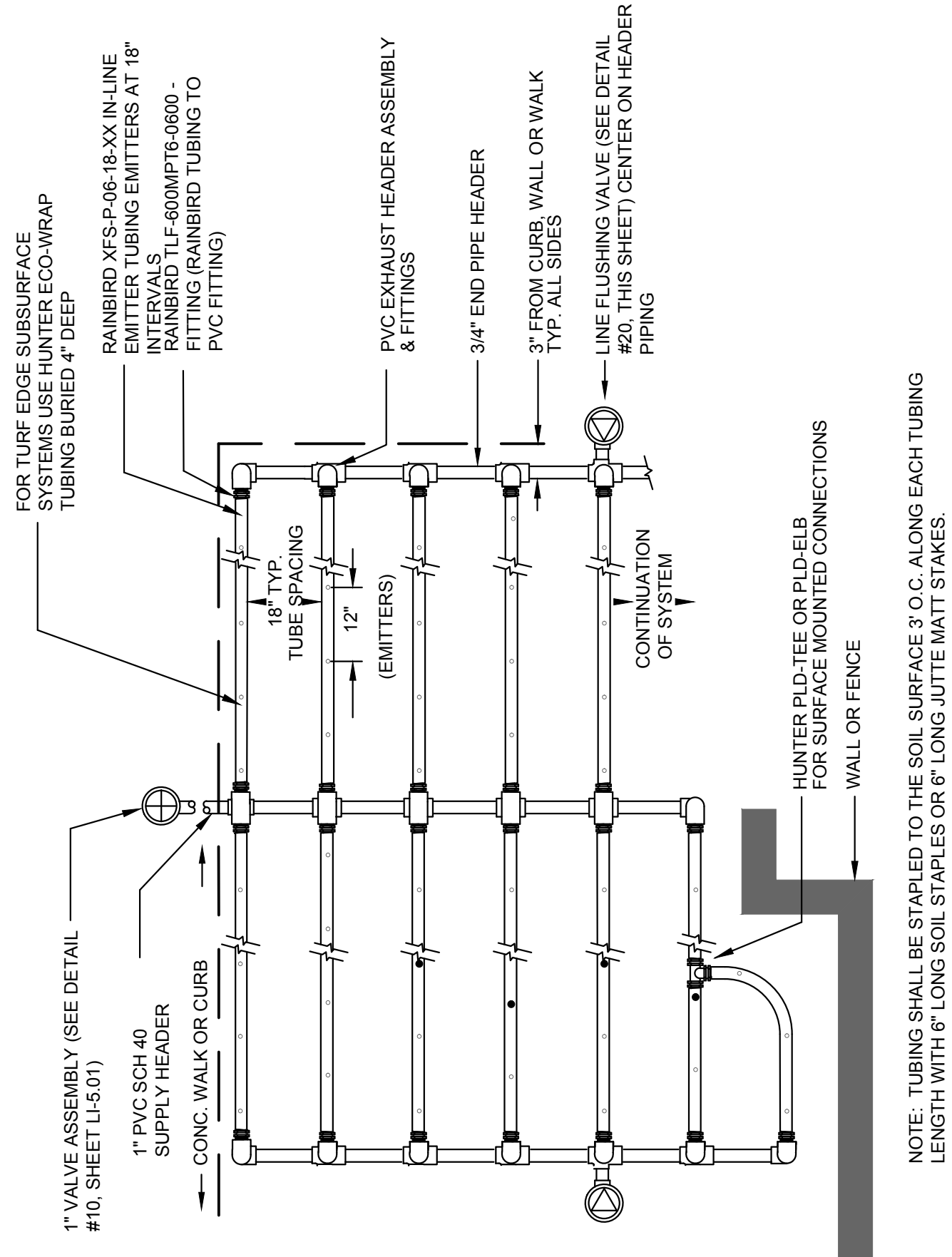


- NOTE:**  
FOR TURF APPLICATION USE NETAFIM CV TUBING DESCRIBED IN THE IRRIGATION SCHEDULE. NETAFIM TUBING TO BE BURIED 4" BELOW FINISH GRADE.  
RAINBIRD XFS-P-06-18-XX IN-LINE EMITTER TUBING - EMITTERS AT 18" INTERVALS OR HUNTER ECO-WRAP AT TURF EDGE SUBSURFACE SYSTEMS  
RAINBIRD TLF-MPT16-0600 ADAPTER FITTING  
1 1/2" SCH 40 FPT TEE (TYPICAL)  
PLANTING BED MULCH (SHRUB BEDS ONLY) OR AMENDED TURF PLANTING MEDIUM



## 5 DRIP INTAKE HEADER MANIFOLD

NTS

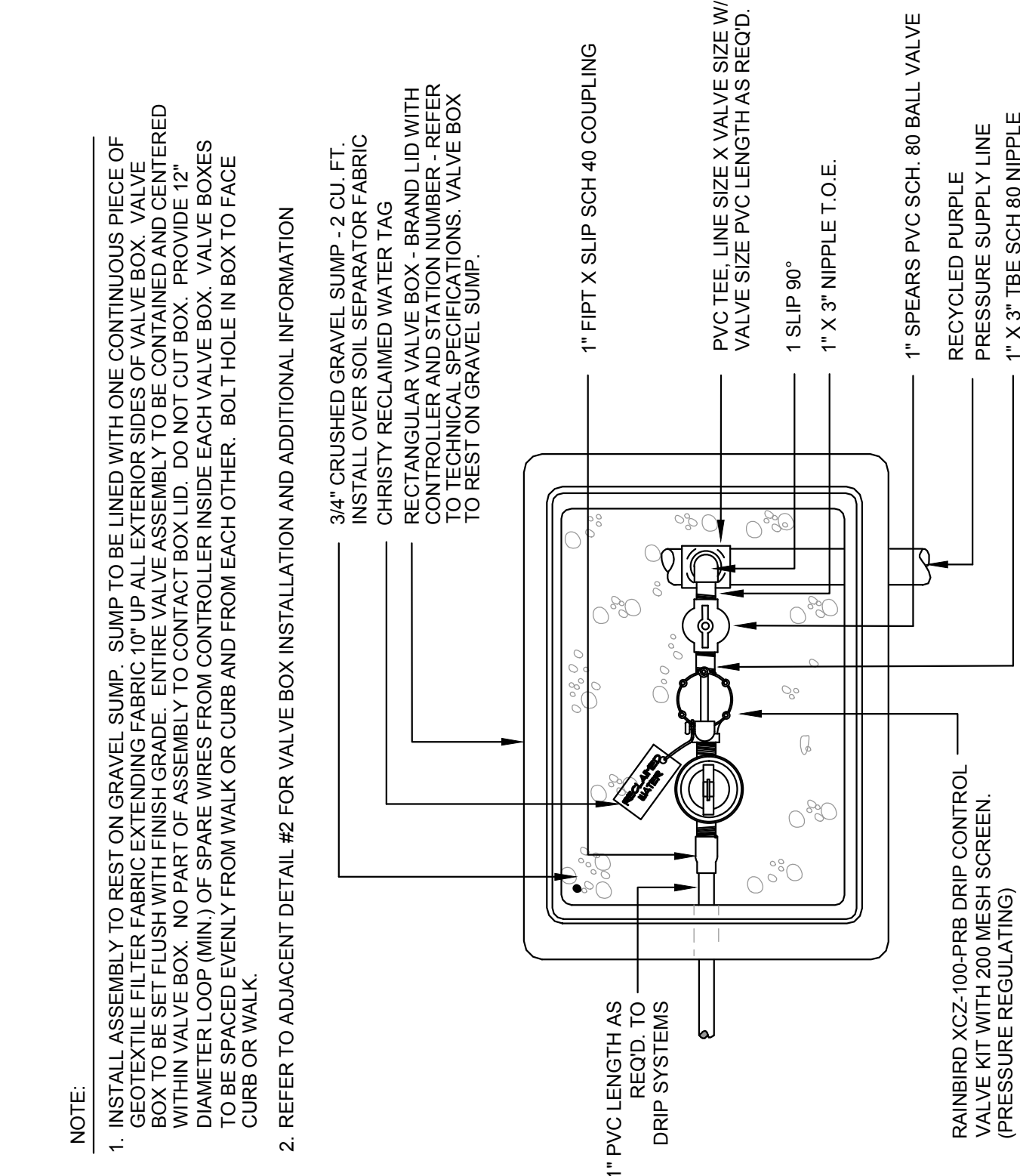


- NOTE:** TUBING SHALL BE STAPLED TO THE SOIL SURFACE 3" O.C. ALONG EACH TUBING LENGTH WITH 6" LONG SOIL STAPLES OR 6" LONG JUTTE MAT STAPLES.

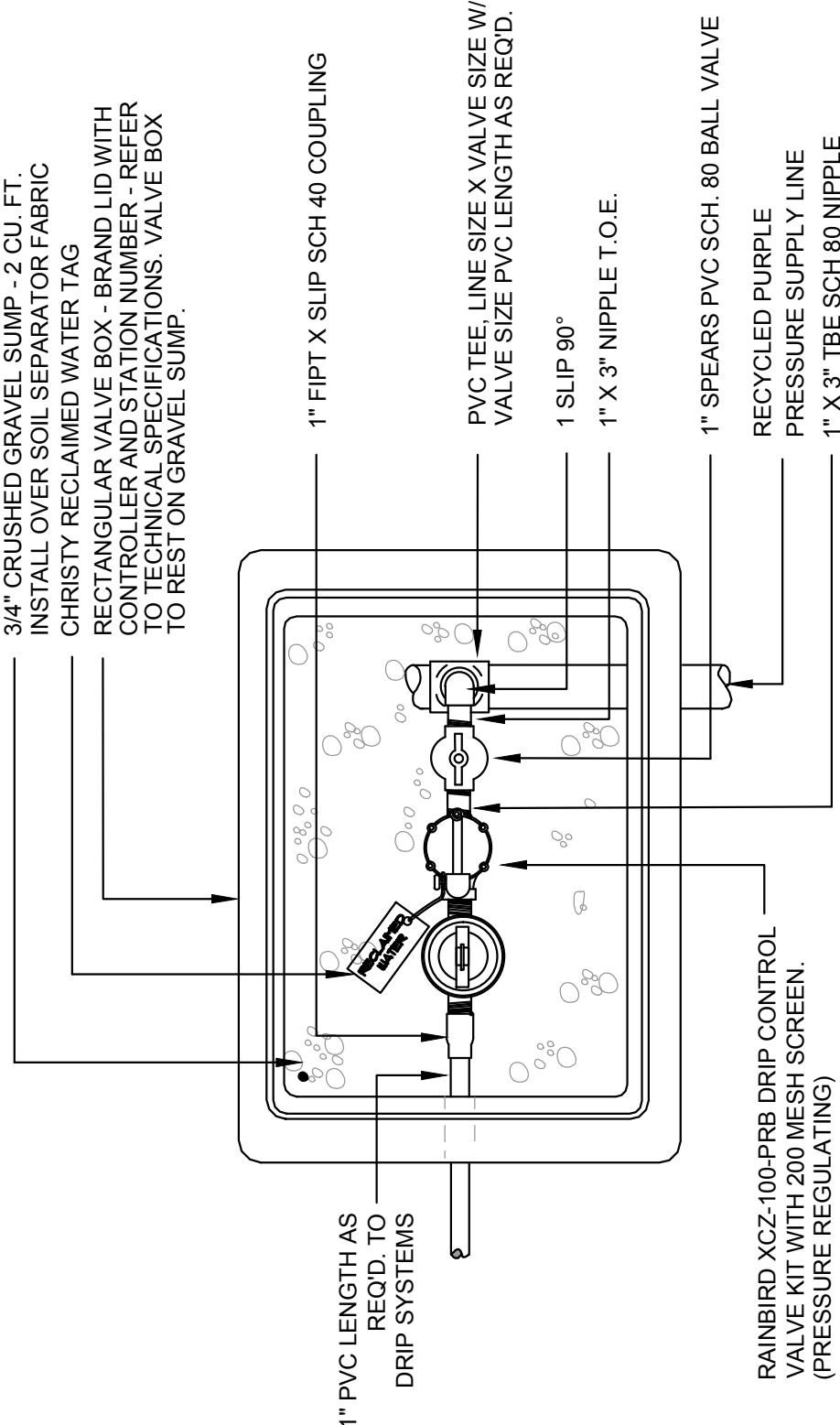
## 6 IN-LINE EMITTER TUBING IRRIGATION LAYOUT

NTS

SHRUB DRIP CONDITION



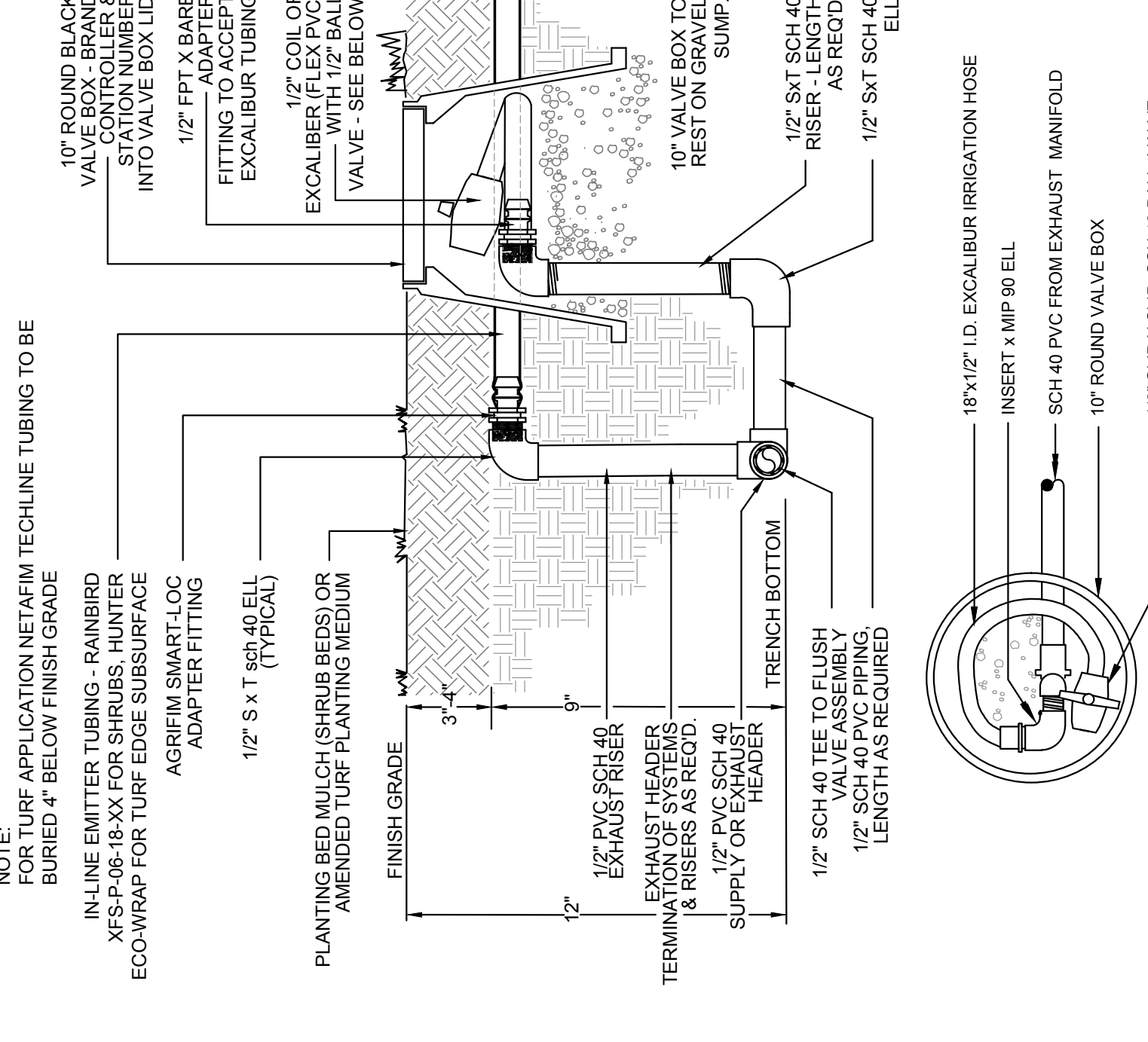
- NOTE:**
1. INSTALL ASSEMBLY TO REST ON GRAVEL. SUMP, SUMP TO BE LINED WITH ONE CONTINUOUS PIECE OF GEOTEXTILE FILTER FABRIC EXTENDING FABRIC 10" UP ALL EXTERIOR SIDES OF VALVE BOX. VALVE BOX TO BE SET FLUSH WITH FINISH GRADE. ENTIRE VALVE ASSEMBLY TO BE CONTAINED AND CENTERED WITHIN VALVE BOX. NO PART OF ASSEMBLY TO CONTACT BOX LID. DO NOT CUT BOX. PROVIDE 12" DIAMETER LOOP (MIN.) OF SPARE WIRES FROM CONTROLLER INSIDE EACH VALVE BOX. VALVE BOXES TO BE SPACED EVENLY FROM WALK OR CURB AND FROM EACH OTHER. BOLT HOLE IN BOX TO FACE CURB OR WALK.
  2. REFER TO ADJACENT DETAIL #2 FOR VALVE BOX INSTALLATION AND ADDITIONAL INFORMATION



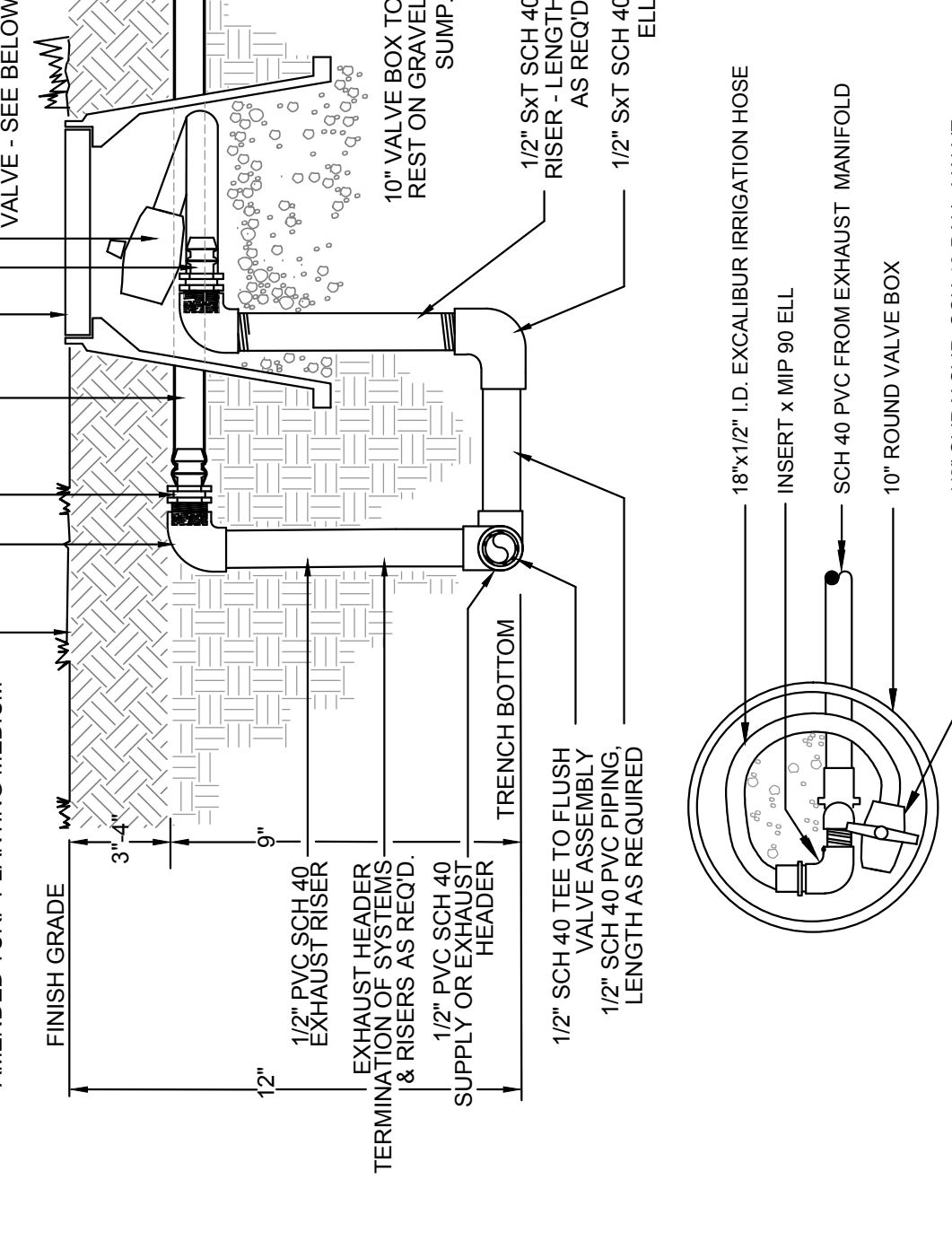
## 3 DRIP VALVE

NTS

USE DURA-PLASTICS OR EQUAL FOR THE STREET ELLS INDICATED.  
USE TEFLON TAPE ON ALL THREADED CONNECTIONS UNLESS SPECIFICALLY INDICATED BY THE MANUFACTURER OF THE COMPONENT TO NOT USE TEFLON TAPE.



- NOTE:**  
FOR TURF APPLICATION NETAFIM TECHLINE TUBING TO BE BURIED 4" BELOW FINISH GRADE  
IN-LINE EMITTER TUBING - RAINBIRD XFS-P-06-18-XX IN-LINE EMITTER TUBING OR HUNTER ECO-WRAP FOR TURF EDGE SUBSURFACE ADAPTER FITTING  
1 1/2" FPT X BARB ADAPTER  
1 1/2" COIL OF EXCALIBUR TUBING  
1 1/2" SCH 40 TEE OR ELL (TYPICAL)  
PLANTING BED MULCH (SHRUB BEDS) OR AMENDED TURF PLANTING MEDIUM



## 7 DRIP EXHAUST HEADER MANIFOLD - FLUSH VALVE

NTS

- NOTES:**
1. Refer to Sheet LI - 1 for Irrigation Schedule.
  2. Refer to Sheet LI - 2 for Irrigation Plans.
  3. Refer to Sheet LI - 3 for Irrigation Details.
  4. Refer to Sheet LI - 4 for Irrigation Specifications

NO.	REVISIONS	DATE	BY

DESIGNED BY: OAKRIDGE LANDSCAPE  
 DRAWN BY: OAKRIDGE LANDSCAPE  
 CHECKED BY: OAKRIDGE LANDSCAPE

PLANS PREPARED BY: SCV WATER  
 SANTA CLARITA VALLEY WATER AGENCY  
 WATER RESOURCES SECTION  
 28501 SUMMIT CIRCLE  
 SANTA CLARITA, CA. 91350  
 (661) 259-2737

BRIDGEPORT POCKET PARK

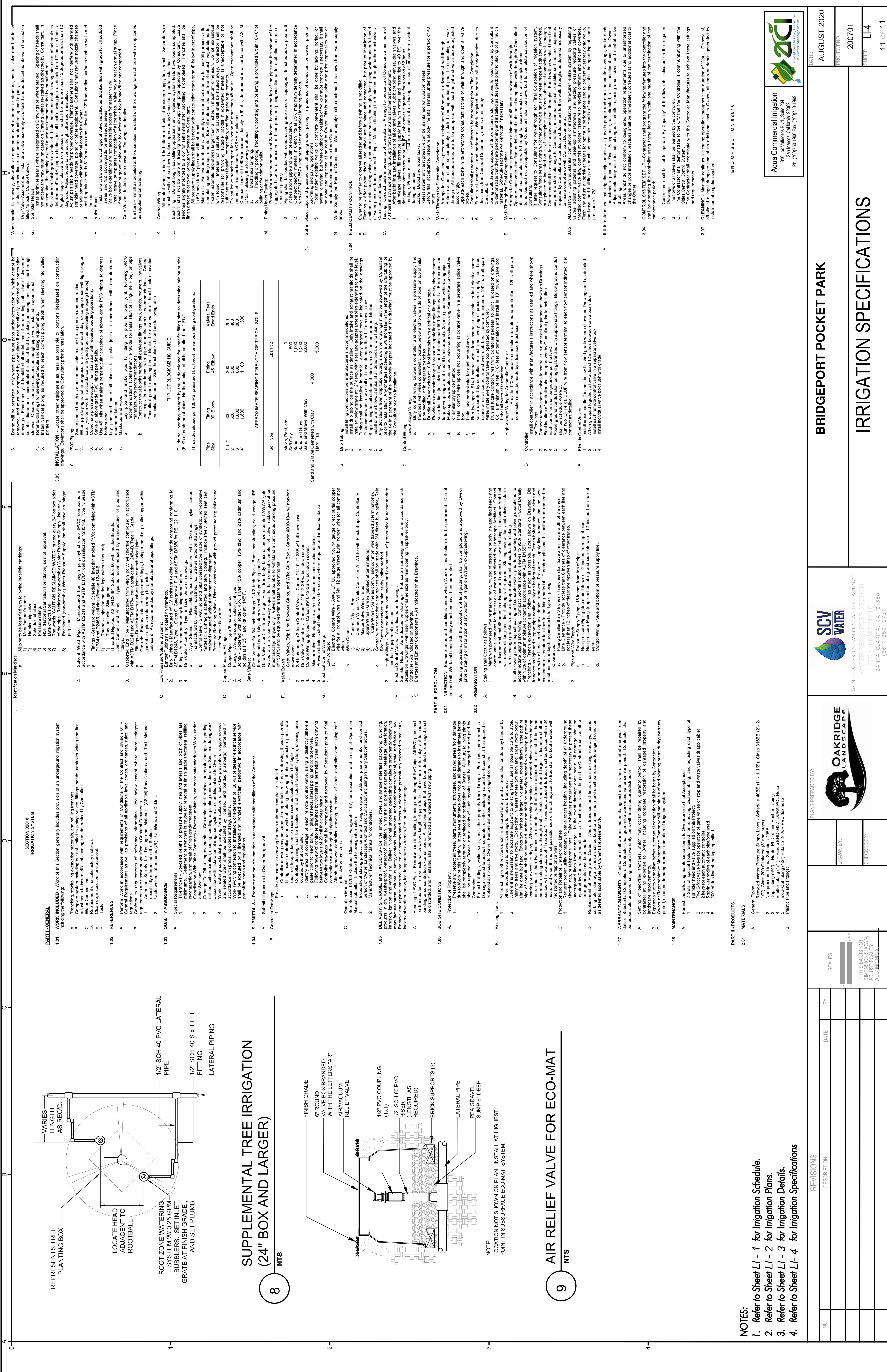
DATE: AUGUST 2020  
 PROJECT NO: 200701  
 SHEET: LI-3  
 10 OF 11

Aqua Commercial Irrigation  
 810 Los Vallecitos Blvd., Suite 204  
 San Marcos, California 92069  
 Ph: (760)750-1900 Fax: (760)750-1999

ACI  
 Irrigation Design, Planning & Construction

IRRIGATION DETAILS





- NOTES:**
1. Refer to Sheet LI - 1 for Irrigation Schedule.
  2. Refer to Sheet LI - 2 for Irrigation Plans.
  3. Refer to Sheet LI - 3 for Irrigation Details.
  4. Refer to Sheet LI - 4 for Irrigation Specifications

REVISONS		DATE		BY	
NO.	DESCRIPTION	DATE	BY	NO.	DESCRIPTION

SCALES	
1" = 10'	1/8" = 1'-0"
IF THIS BAR IS NOT TO SCALE, REFER TO THE ADJUST SCALES ACCORDINGLY.	

DRAWN BY:		CHECKED BY:	
DESIGNS PREPARED BY:		OAKRIDGE LANDSCAPE	
SANTA CLARITA VALLEY WATER AGENCY WATER RESOURCES SECTION 26801 SUMMIT CIRCLE SANTA CLARITA, CA. 91350 (661) 259-2737			
SCV WATER		BRIDGEPORT POCKET PARK	

NO.	PROJECT NO.	DATE:
	200701	AUGUST 2020
	SHEET: LI-4	
	11	OF 11

When parallel to roadway, sidewalk, or other permanent element of structure, control valve and box to be located on the same side of the roadway, sidewalk, or other permanent element of structure as the water supply line. The water supply line shall be installed in a trench as described above in the section titled "Electric Control Valves".

3. Boring will be permitted only where pipe must pass under obstruction(s), which cannot be removed and must be approved by Consultant prior to installation. Boring shall be specifically indicated on construction drawings. Boring shall be installed in accordance with the following specifications:

1. Boring shall be installed in accordance with the following specifications:
2. Boring shall be installed in accordance with the following specifications:
3. Boring shall be installed in accordance with the following specifications:
4. Boring shall be installed in accordance with the following specifications:

**3.03 INSTALLATION** - Locate other equipment as near as possible to locations designated on construction drawings. Deviations shall be approved by Consultant prior to installation.

- PVC Piping**
  1. PVC piping shall be approved by Consultant prior to installation.
  2. When pipe laying in wet or soggy conditions, use a trench box or trench shields to prevent pipe from shifting.
  3. Use 45° rills when making perpendicular crossings of above grade PVC piping, to depress the trench.
  4. Lay pipe and make all plastic joints in accordance with manufacturer's recommendations.
  5. Lay pipe and make pipe to fitting or pipe to pipe joint, following gPRP recommendations (Aqua-Manual Guide for Installation of Polyethylene Pipe, or the Aqua-Manual Guide for Installation of Polyethylene Pipe).
  6. Construct thrust blocks behind all gasketed fittings, tees, bends, reducers, line valves, and caps in accordance with pipe manufacturer's recommendations. Contact manufacturer for thrust block design and material placement. Size thrust blocks based on following table:

Pipe Size	Fitting	Valves, Tees and Elbows
1/2"	300	200
3/4"	1,000	600
1"	1,800	1,100

**APPROXIMATE BEARING STRENGTH OF TYPICAL SOILS**

Soil Type	lb/ft <sup>2</sup>
Moist Plant, etc.	0
Sand	500
Sand and Gravel	1,000
Sand and Gravel With Clay	2,000
Hard Pan	5,000

**3.04 FIELD QUALITY CONTROL**

1. Install fitting connections per manufacturer's recommendations.
2. Install fitting connections per manufacturer's recommendations.
3. Install fitting connections per manufacturer's recommendations.
4. Install fitting connections per manufacturer's recommendations.
5. Install fitting connections per manufacturer's recommendations.
6. Install fitting connections per manufacturer's recommendations.
7. Install fitting connections per manufacturer's recommendations.
8. Install fitting connections per manufacturer's recommendations.
9. Install fitting connections per manufacturer's recommendations.
10. Install fitting connections per manufacturer's recommendations.
11. Install fitting connections per manufacturer's recommendations.
12. Install fitting connections per manufacturer's recommendations.
13. Install fitting connections per manufacturer's recommendations.
14. Install fitting connections per manufacturer's recommendations.
15. Install fitting connections per manufacturer's recommendations.
16. Install fitting connections per manufacturer's recommendations.
17. Install fitting connections per manufacturer's recommendations.
18. Install fitting connections per manufacturer's recommendations.
19. Install fitting connections per manufacturer's recommendations.
20. Install fitting connections per manufacturer's recommendations.
21. Install fitting connections per manufacturer's recommendations.
22. Install fitting connections per manufacturer's recommendations.
23. Install fitting connections per manufacturer's recommendations.
24. Install fitting connections per manufacturer's recommendations.
25. Install fitting connections per manufacturer's recommendations.
26. Install fitting connections per manufacturer's recommendations.
27. Install fitting connections per manufacturer's recommendations.
28. Install fitting connections per manufacturer's recommendations.
29. Install fitting connections per manufacturer's recommendations.
30. Install fitting connections per manufacturer's recommendations.
31. Install fitting connections per manufacturer's recommendations.
32. Install fitting connections per manufacturer's recommendations.
33. Install fitting connections per manufacturer's recommendations.
34. Install fitting connections per manufacturer's recommendations.
35. Install fitting connections per manufacturer's recommendations.
36. Install fitting connections per manufacturer's recommendations.
37. Install fitting connections per manufacturer's recommendations.
38. Install fitting connections per manufacturer's recommendations.
39. Install fitting connections per manufacturer's recommendations.
40. Install fitting connections per manufacturer's recommendations.
41. Install fitting connections per manufacturer's recommendations.
42. Install fitting connections per manufacturer's recommendations.
43. Install fitting connections per manufacturer's recommendations.
44. Install fitting connections per manufacturer's recommendations.
45. Install fitting connections per manufacturer's recommendations.
46. Install fitting connections per manufacturer's recommendations.
47. Install fitting connections per manufacturer's recommendations.
48. Install fitting connections per manufacturer's recommendations.
49. Install fitting connections per manufacturer's recommendations.
50. Install fitting connections per manufacturer's recommendations.
51. Install fitting connections per manufacturer's recommendations.
52. Install fitting connections per manufacturer's recommendations.
53. Install fitting connections per manufacturer's recommendations.
54. Install fitting connections per manufacturer's recommendations.
55. Install fitting connections per manufacturer's recommendations.
56. Install fitting connections per manufacturer's recommendations.
57. Install fitting connections per manufacturer's recommendations.
58. Install fitting connections per manufacturer's recommendations.
59. Install fitting connections per manufacturer's recommendations.
60. Install fitting connections per manufacturer's recommendations.
61. Install fitting connections per manufacturer's recommendations.
62. Install fitting connections per manufacturer's recommendations.
63. Install fitting connections per manufacturer's recommendations.
64. Install fitting connections per manufacturer's recommendations.
65. Install fitting connections per manufacturer's recommendations.
66. Install fitting connections per manufacturer's recommendations.
67. Install fitting connections per manufacturer's recommendations.
68. Install fitting connections per manufacturer's recommendations.
69. Install fitting connections per manufacturer's recommendations.
70. Install fitting connections per manufacturer's recommendations.
71. Install fitting connections per manufacturer's recommendations.
72. Install fitting connections per manufacturer's recommendations.
73. Install fitting connections per manufacturer's recommendations.
74. Install fitting connections per manufacturer's recommendations.
75. Install fitting connections per manufacturer's recommendations.
76. Install fitting connections per manufacturer's recommendations.
77. Install fitting connections per manufacturer's recommendations.
78. Install fitting connections per manufacturer's recommendations.
79. Install fitting connections per manufacturer's recommendations.
80. Install fitting connections per manufacturer's recommendations.
81. Install fitting connections per manufacturer's recommendations.
82. Install fitting connections per manufacturer's recommendations.
83. Install fitting connections per manufacturer's recommendations.
84. Install fitting connections per manufacturer's recommendations.
85. Install fitting connections per manufacturer's recommendations.
86. Install fitting connections per manufacturer's recommendations.
87. Install fitting connections per manufacturer's recommendations.
88. Install fitting connections per manufacturer's recommendations.
89. Install fitting connections per manufacturer's recommendations.
90. Install fitting connections per manufacturer's recommendations.
91. Install fitting connections per manufacturer's recommendations.
92. Install fitting connections per manufacturer's recommendations.
93. Install fitting connections per manufacturer's recommendations.
94. Install fitting connections per manufacturer's recommendations.
95. Install fitting connections per manufacturer's recommendations.
96. Install fitting connections per manufacturer's recommendations.
97. Install fitting connections per manufacturer's recommendations.
98. Install fitting connections per manufacturer's recommendations.
99. Install fitting connections per manufacturer's recommendations.
100. Install fitting connections per manufacturer's recommendations.

**Aqua Commercial Irrigation**  
 810 Los Valencas Blvd., Suite 204  
 San Marcos, California 92069  
 Ph: (760) 956-1900 Fax: (760) 956-1999

**ACI**  
 A Division of Design Partnership

END OF SECTION 02810



[This page intentionally left blank.]



Additional Information

Item 4 - Authorizing the GM to Execute a Construction Contract for Bridgeport Pocket Park

**Santa Clarita Valley Water Agency**

Bid Results for Project Bridgeport Pocket Park (2300190)

Issued on 07/22/2022

Bid Due on September 01, 2022 2:00 PM (PDT)

Exported on 09/01/2022

<b>Subtotal</b>	<b>\$373,147.60</b>
<b>Total</b>	<b>\$373,147.60</b>
<b>Square Feet</b>	16,000.00
<b>\$/SF</b>	\$23.32

**Table 1.** SCV Water - Bridgeport Pocket Park Lowest Cost Bid Proposal by Element

<b>Element</b>	<b>Total</b>	<b>\$/SF</b>	<b>%</b>
Construction	\$ 129,805.39	\$ 8.11	35%
Engagement "Signage"	\$ 70,077.00	\$ 4.38	19%
Irrigation	\$ 43,044.74	\$ 2.69	12%
Non-Plant Landscape	\$ 58,197.84	\$ 3.64	16%
Pathways & Pads	\$ 30,174.33	\$ 1.89	8%
Plants	\$ 30,127.97	\$ 1.88	8%
Services	\$ 11,720.33	\$ 0.73	3%