



March 9, 2022

Water Conservation Garden & Education Experience

Design Review

Water Resources and Watershed Committee
March 9, 2022
Item No. 6.2

Design Review Objectives


- Overview of Water Conservation Garden and Education Experience Project
- Review Completed Exhibit Design Concepts
- Demonstrate 3-D Garden Model
- Elicit Feedback from WRW Committee
- Discuss Project Design, Cost, and O&M Components



Milestones

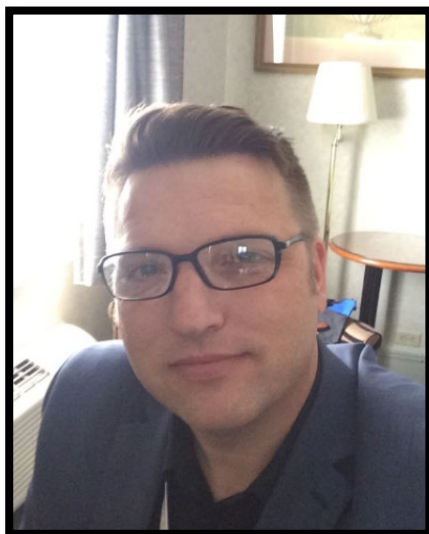
1. Introductions
2. Project Overview
3. Completed Exhibit Designs
4. Evolution of Garden Design Concept
5. 3-D Model Demonstration
6. Discussion
7. Project Schedule & Next Steps





INTRODUCTIONS

Introductions



MATTHEW S. DICKENS, MPA
SCV WATER



JULIA GROTHE
SCV WATER



SAL CONTRERAS, P.E.
ENCOMPASS CONSULTANT
GROUP



CHRIS HORTON, MLA
PACIFIC COAST LANDSCAPING
DESIGN

Additional Support:

SCV Water Staff

- Education
- Communications
- Sustainability
- Engineering
- Water Resources
- Administration

Exhibit Design

- Bowman Change



Project Overview

Project Overview

***Mission** - Educating the public on the value of water.*

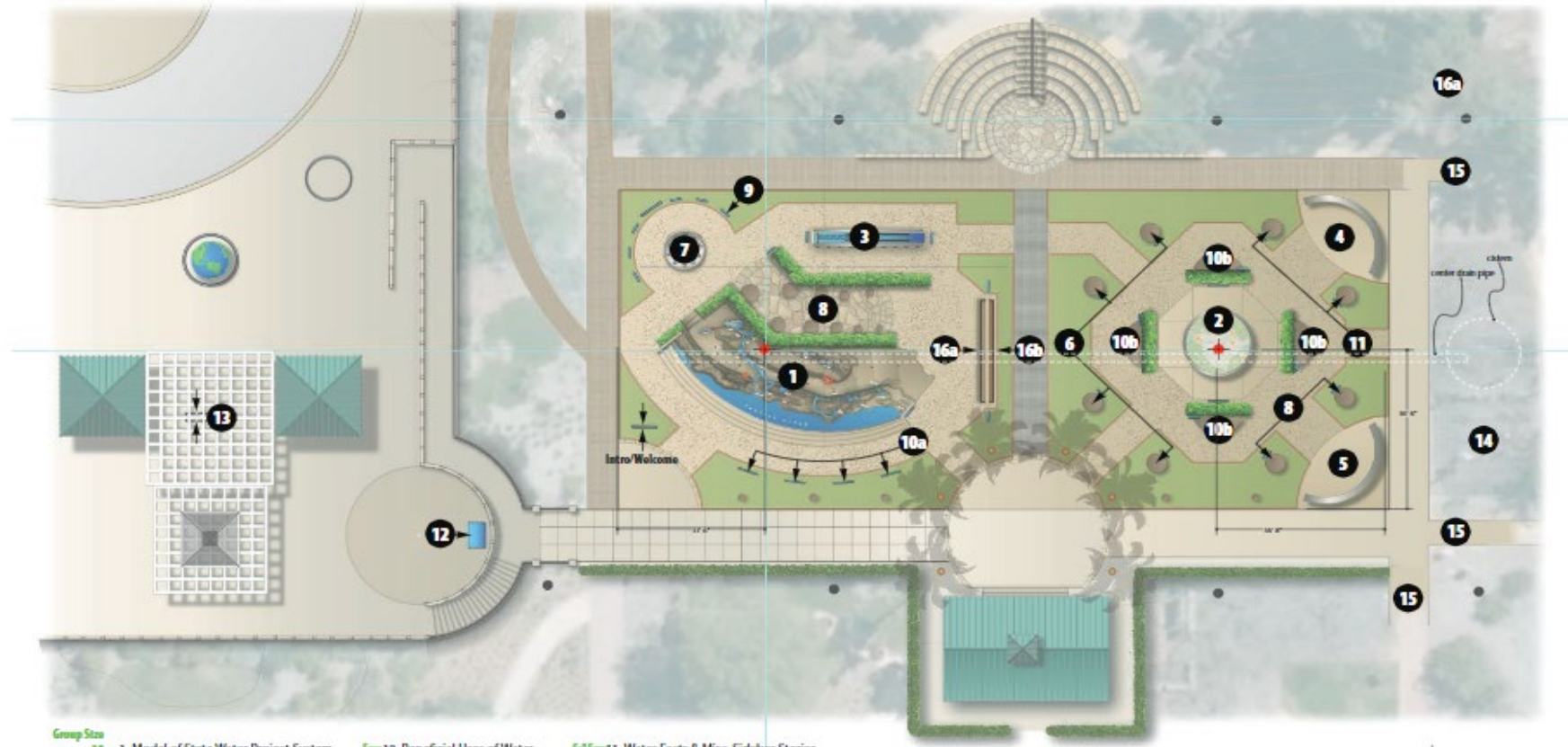
***Vision** - Creating sustainable public spaces for educational, inspirational, and demonstration purposes pertaining to the values and beneficial uses of water throughout the Santa Clarita Valley.*

1. Legacy Conservatory Garden Taskforce
2. SCV Water - Conservatory Garden Technical Advisory Group
3. SWP and Local Aquifer Exhibit Designs
4. Conservation Garden & Education Experience Design Team



Exhibit Design Concepts

Exhibit Master Plan



Group Size

- 30— 1. Model of State Water Project System
- 30— 2. Local Watershed
- 15— 3. Water Energy Nexus Pump Model
- 15— 4. Outdoor Water Conservation
- 15— 5. Indoor Water Conservation
- 15— 6. Soil Horizons/Soil Profiles
- 5— 7. Water Quality
- 15— 8. Water Footprint
- 15— 9. How Will Climate Change Impact Water Supply?

- 5— 10. Beneficial Uses of Water
 - a. as state/public issue
 - value of water
 - water waste
 - energy waste
 - beneficial uses
 - b. as personal issue
 - value of water
 - water waste
 - energy waste
 - beneficial uses

- 5-15— 11. Water Facts & Misc. Sidebar Stories
 - collection of individual users
 - what you can do to conserve water
 - SCV Water history
 - LRP transformations
 - where does water go?
- 30— 12. Conservatory Garden Map
- 30— 13. Water Treatment Plant Overview

- 30— 14. Composting, Recycling, FOGs
- 30— 15. Path & Urban Forest Sample Leading Back To Classroom (TBD next phase)
- 30— 16. Aquifers
 - a. state
 - b.local

— Rough slab-out for water & power (7 locations shown)

Topic Areas Site Plan—Concept
Interactive State Water Project Model

Scale: 1"= 10'

bowman.change

Partners/Consultants:

edhackley.com

Project:

Start Date: 5/1/2020
Integrative Exhibit Design Development
For Santa Clara Valley Water Exhibits

Client:



Revisions:

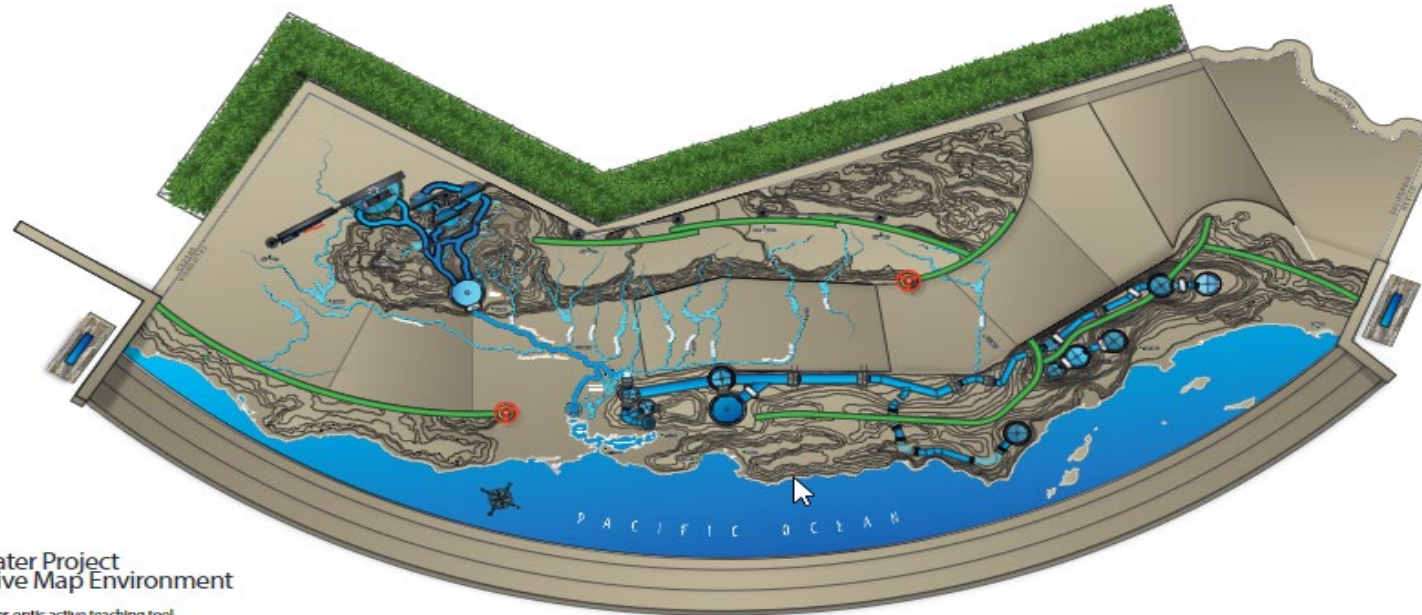
1	6/29/2020	4	4
2		2	2
3		4	4

concept document only
subject to review of all users, as a final
working presentation is provided to show scope
of exhibit expansion and/or distribution.

sheet no. 1



State Water Project - Exhibit Design



State Water Project
Interactive Map Environment

Water and fiber-optic active teaching tool

bowman.change

Partners/Consultants:



Project:

Start Date: 01/2009
Interactive Exhibit Design Development
For Santa Clara Valley Water Exhibit

Client:



Revisions:

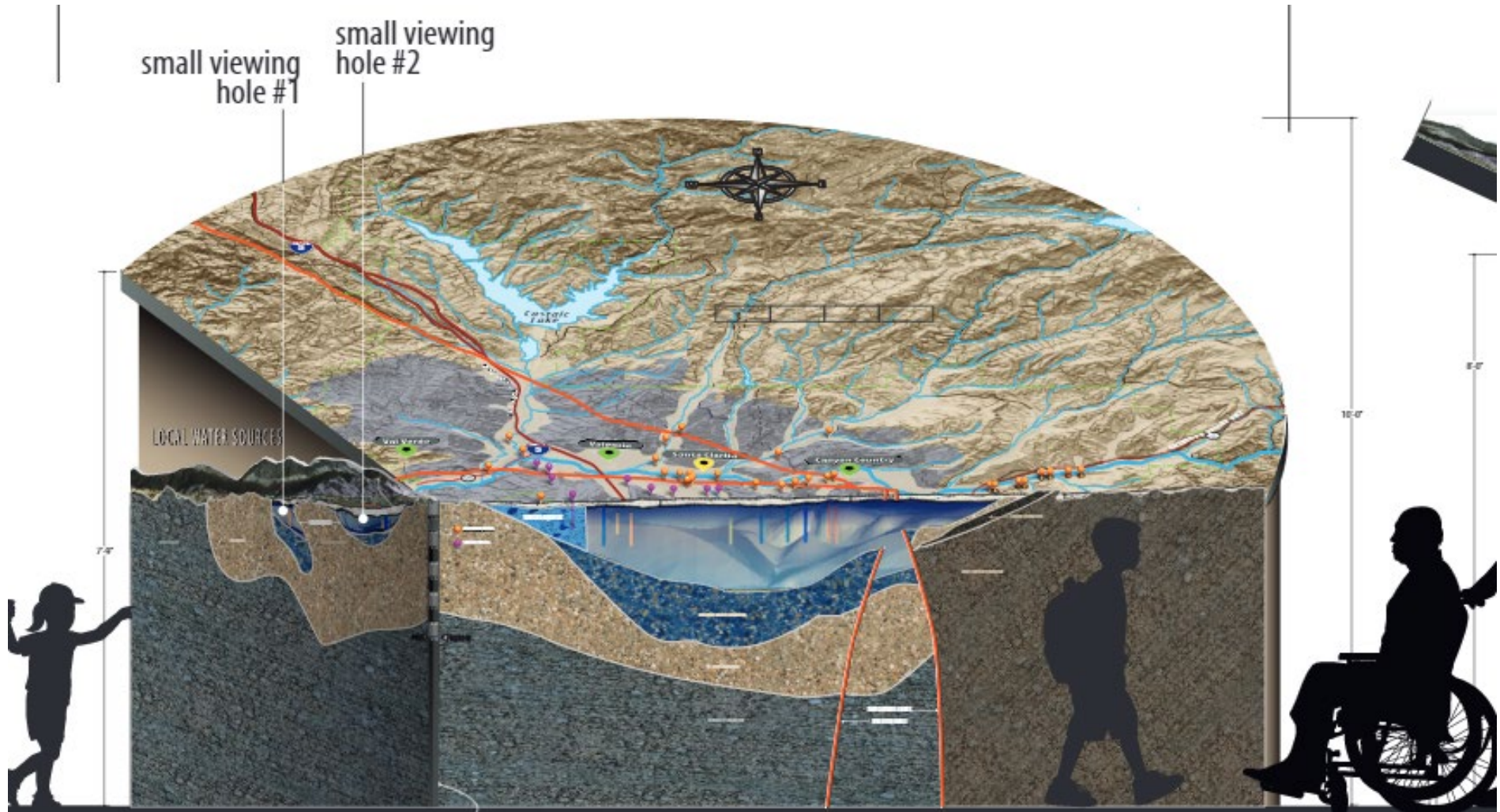
1) 6/26/2009	5%	0%
2) 7/15/2009	5%	0%
3)	0%	0%

Final Design Documents Only. Not a construction or installation document. These are for informational purposes only. Please contact the SCV Water Department for more information. All rights reserved.

10/06/10 2



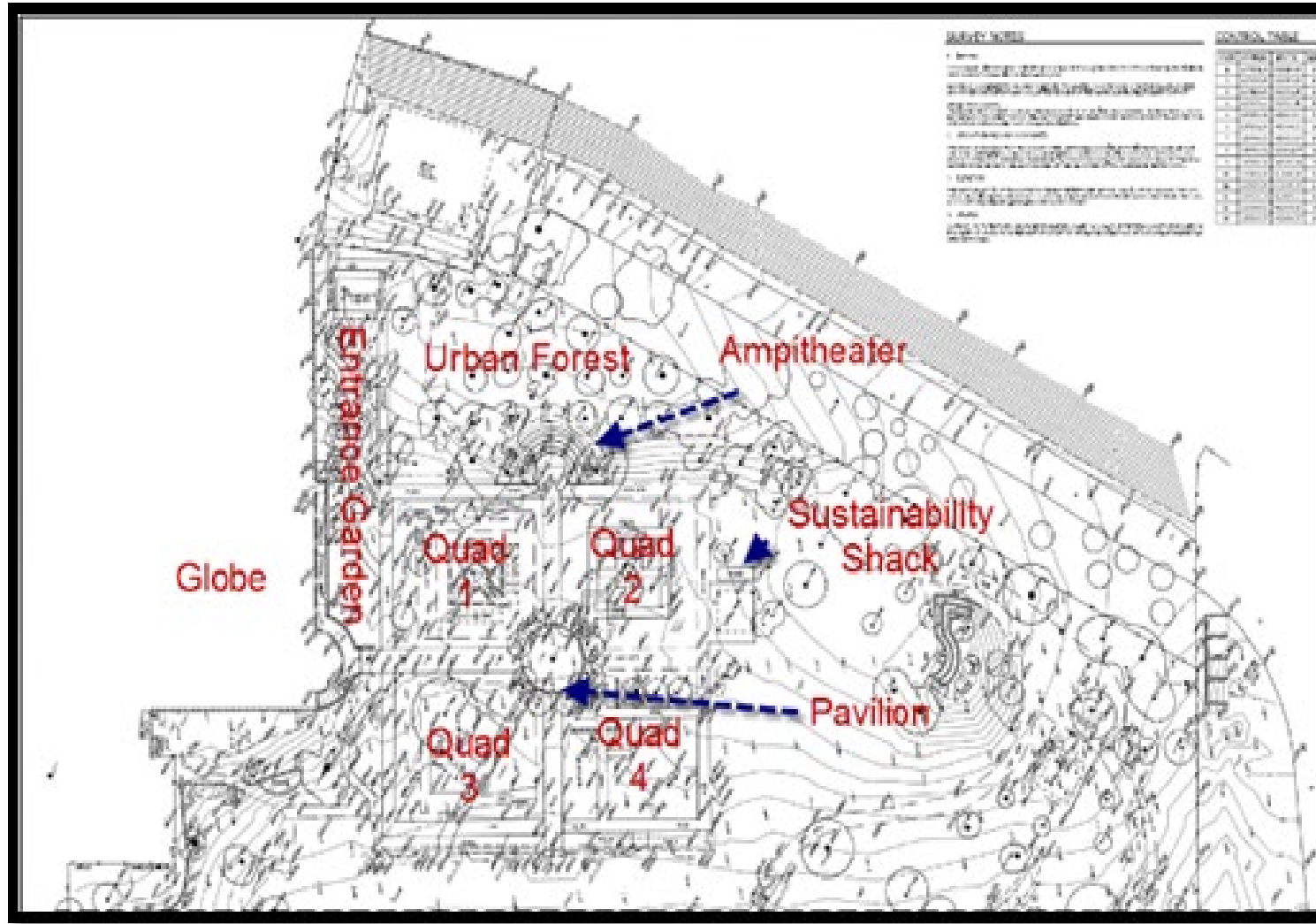
Local Aquifers - Exhibit Design



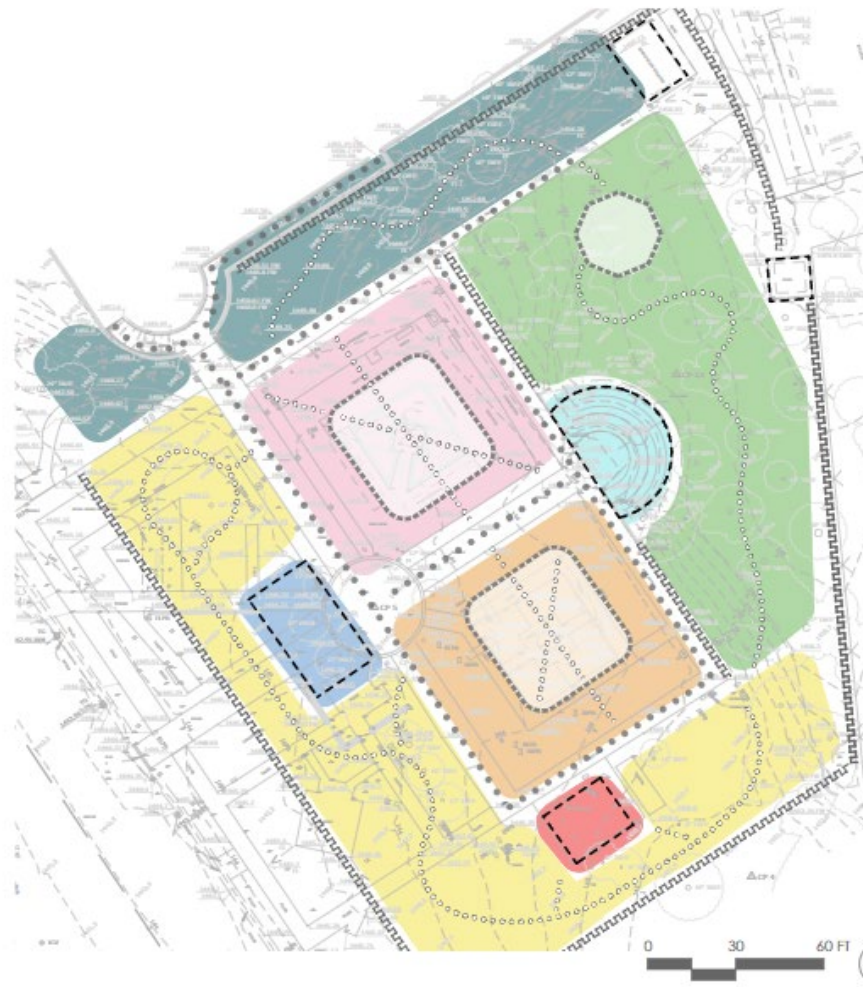


Evolution of Garden Design Concept

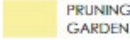


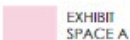
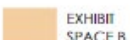
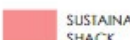



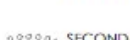


Project Overview



Project Overview



KEY LEGEND

	PRUNING GARDEN	Plant ID Scavenger hunt Community pruning education Low water use planting Natives and adapted planting
	ENTRY GARDEN	Plant ID Scavenger hunt Stormwater collection Raingardens ADA/CBC compliant access
	URBAN FOREST	Trees appropriate for home use Low water use planting Plant ID Scavenger hunt ADA/CBC compliant access
	EXHIBIT SPACE A	Plant ID Scavenger hunt Shade structures covering exhibits State of CA Water Engineering Exhibit ADA/CBC compliant access
	EXHIBIT SPACE B	Plant ID Scavenger hunt Shade structures covering exhibits Flexible event space Future exhibits focusing on home use TBD ADA/CBC compliant access
	SUSTAINABILITY SHACK	Wood or metal structure Unique, ecological form? ADA/CBC compliant access
	PAVILION	Classic California aesthetic Solid roof structure Flexible event space ADA/CBC compliant access
	AMPHITHEATER	Existing stone seating to remain Existing walking surfaces to be replaced with stone or concrete Shade structures? ADA/CBC compliant access
	PRIMARY PATH OF TRAVEL	8' 12" width Permeable pavement where feasible Unit pavers and concrete
	SECONDARY PATH OF TRAVEL	4' 8" width Permeable pavement where feasible Unit pavers and concrete
	VEGETATED BORDER	
	BUILDING	



CONCEPTUAL DESIGN

SCVWA CONSERVATORY GARDEN REFURBISHMENT

27254 ROBERTT CARPENTER
SAN JUAN CAPITRA, CA 91350

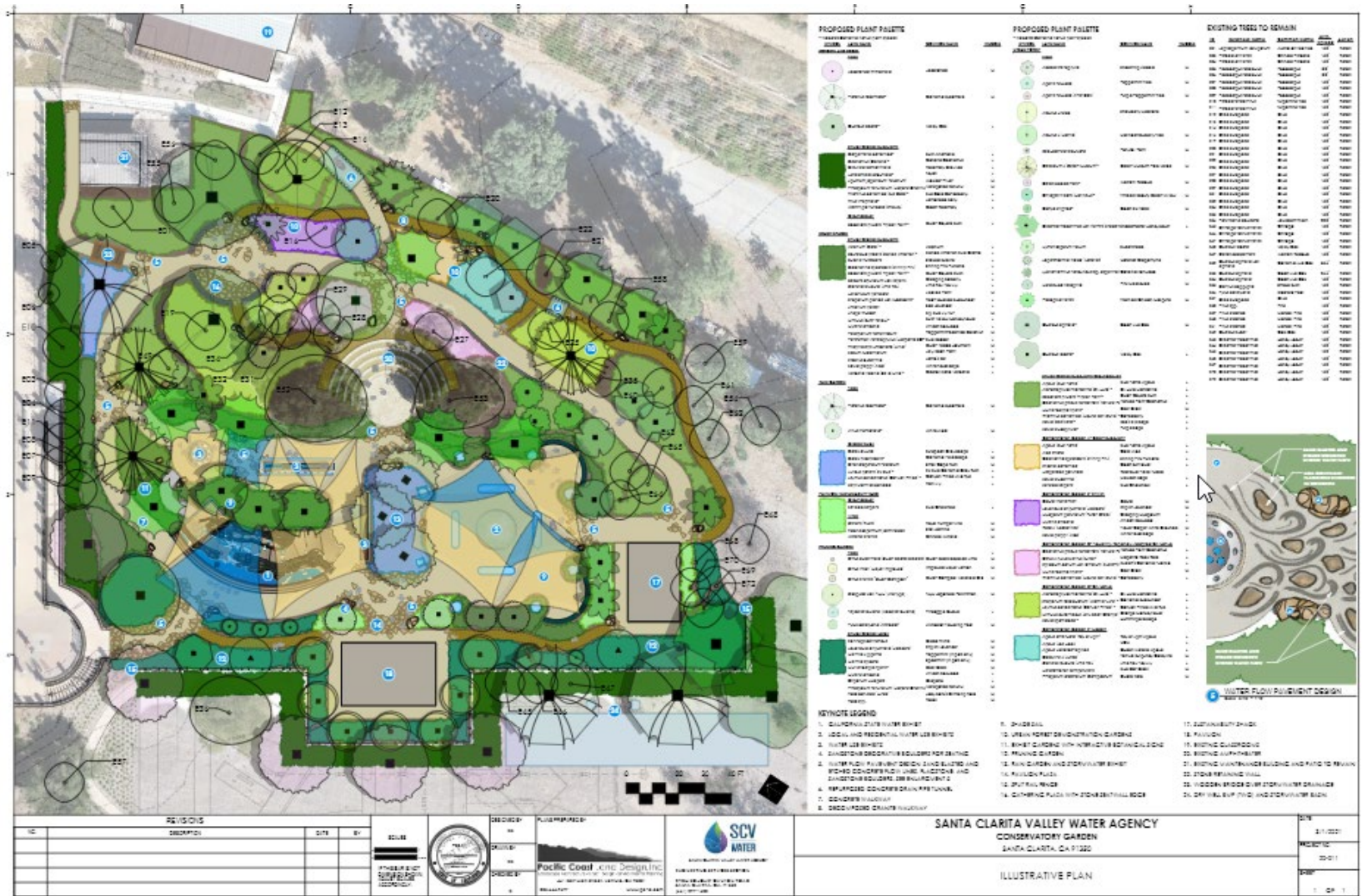
08.03.2020



01



Project Overview



The background features a decorative graphic consisting of several overlapping, curved bands in shades of blue and green, creating a sense of depth and movement. The bands are layered, with a dark blue band at the top and bottom, and a lighter blue band in the middle, with a green band in between. The overall effect is a modern, abstract design.

3-D Model Demonstration



Slide Intentionally Left Blank

(Sample 3-D Model screenshots included at the end of the
presentation slide deck)

The background features a white central area framed by curved, layered bands of blue and green. The top and bottom edges are defined by a dark blue band, with a lighter blue band and a green band nested within. The word "Discussion" is centered in the white space.

Discussion

Discussion

1. Primary Utility

- a. Child Education Programs
- b. Adult Education Programs
- c. General Public Use & Demonstration
- d. Community Events
- e. Training and Industry Events

2. Learning Garden

- a. Mixture of Curriculum-Salient & Water Efficient Plants
- b. Use of High Efficiency Irrigation Technologies
- c. Meets and Exceeds Model Water Efficient Landscape Ordinance
- d. Education Exhibits (Global, State, and Local Water Perspectives)

3. Education and Training Spaces

- a. Garden Pavilion
- b. Sustainability Shack
- c. Shade Sails
- d. Amphitheatre

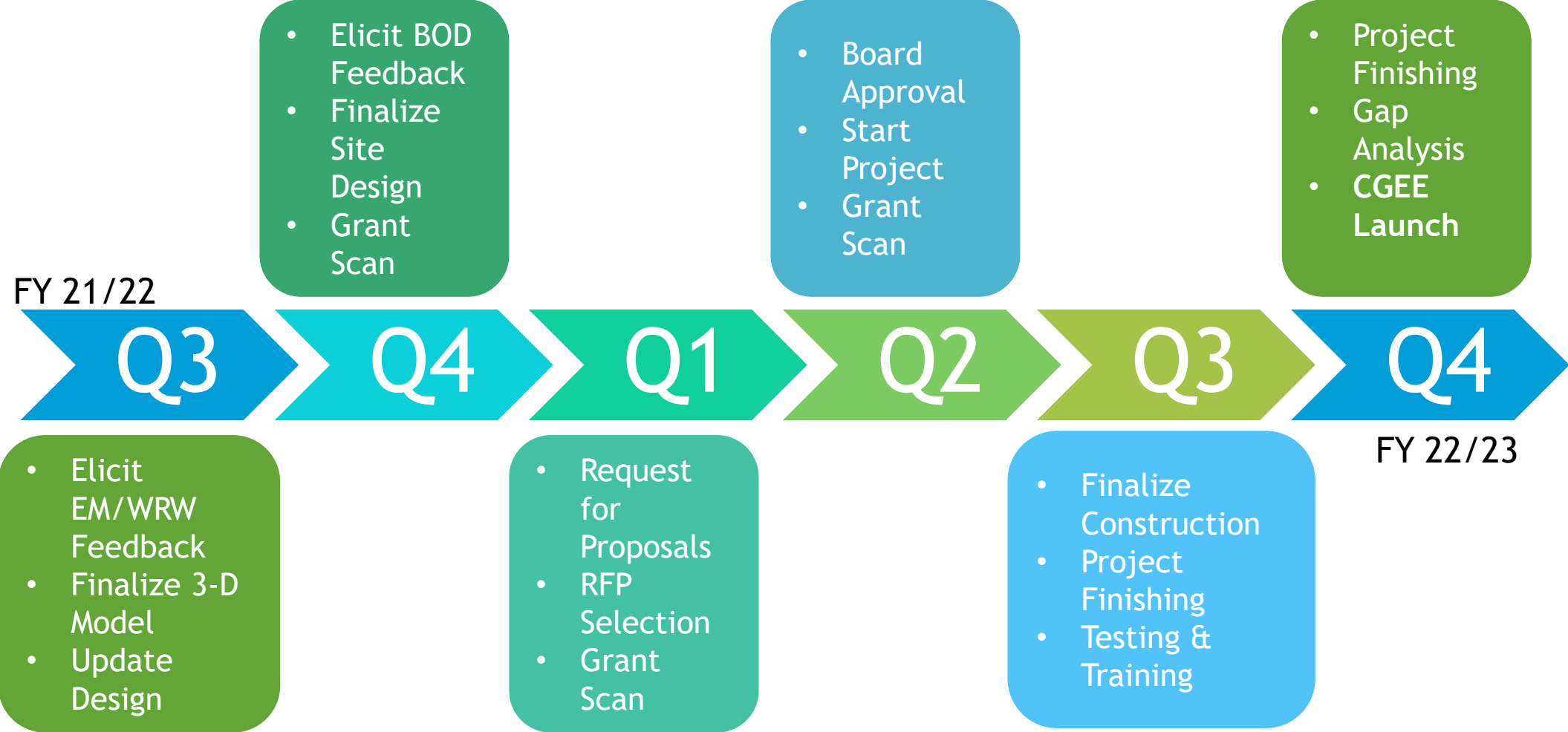
Discussion

1. **General Questions, Comments, or Concerns?**
2. **Design Check-In**
 - a. Hardscape, Landscape, Structures (~\$1.8 Million)
 - b. Exhibits (~\$600,000)
 - c. Structures Shading Options
 - i. Shade Sails (~\$800,000)
 - ii. Shade Trees
 - d. Total Cost Estimate = ~\$3.2 - \$3.5 Million
3. **Operations & Maintenance**
 - a. Management
 - b. Operations
 - c. Landscape Maintenance
 - d. Exhibit Maintenance
 - e. Budget Considerations



Project Schedule & Next Steps

Project Schedule & Next Steps





SCV
WATER

Thank You!

Matthew S. Dickens, MPA
Sustainability Manager
SCV Water

mdickens@scvwa.org