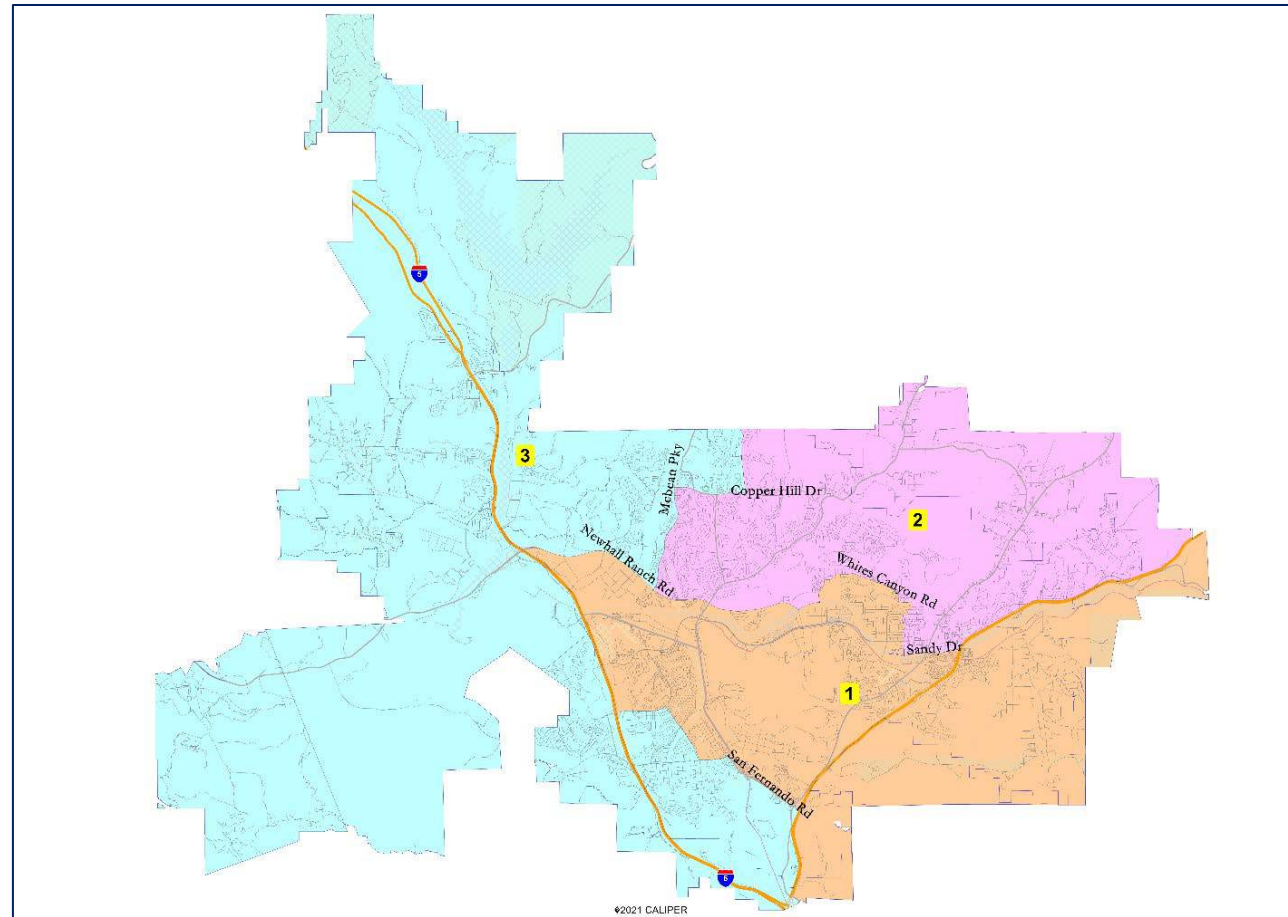


Santa Clarita Valley Water Agency 2021 Redistricting

Douglas Johnson, NDC

Joseph Byrne, BBK



Redistricting Requirement

- SB 634
 - Section 6: Electoral divisions must be adjusted every 10 years after the census in compliance with Elections Code 22000 et. seq.

Redistricting Process: What is Required?

- Elections Code requires:
 - Two public hearings.
 - The approved map must be submitted to the Los Angeles County Registrar of Voters by no later than April 17, 2022.

State Law Considerations

- Elections Code 22000.
- In adjusting the boundaries of the divisions, the board may give consideration to the following factors:
 - (1) topography
 - (2) geography
 - (3) cohesiveness, contiguity, integrity, and compactness of territory, and
 - (4) community of interests of the division.

Redistricting Rules and Goals

Federal Laws

Equal Population

Federal Voting Rights Act

No Racial Gerrymandering



Traditional Redistricting Principles

Communities of interest

Compact

Contiguous

Visible (Natural & man-made) boundaries

Respect voters' choices / continuity in office

Planned future growth

Minimize voters shifted to different election years

Preserving the core of existing election areas

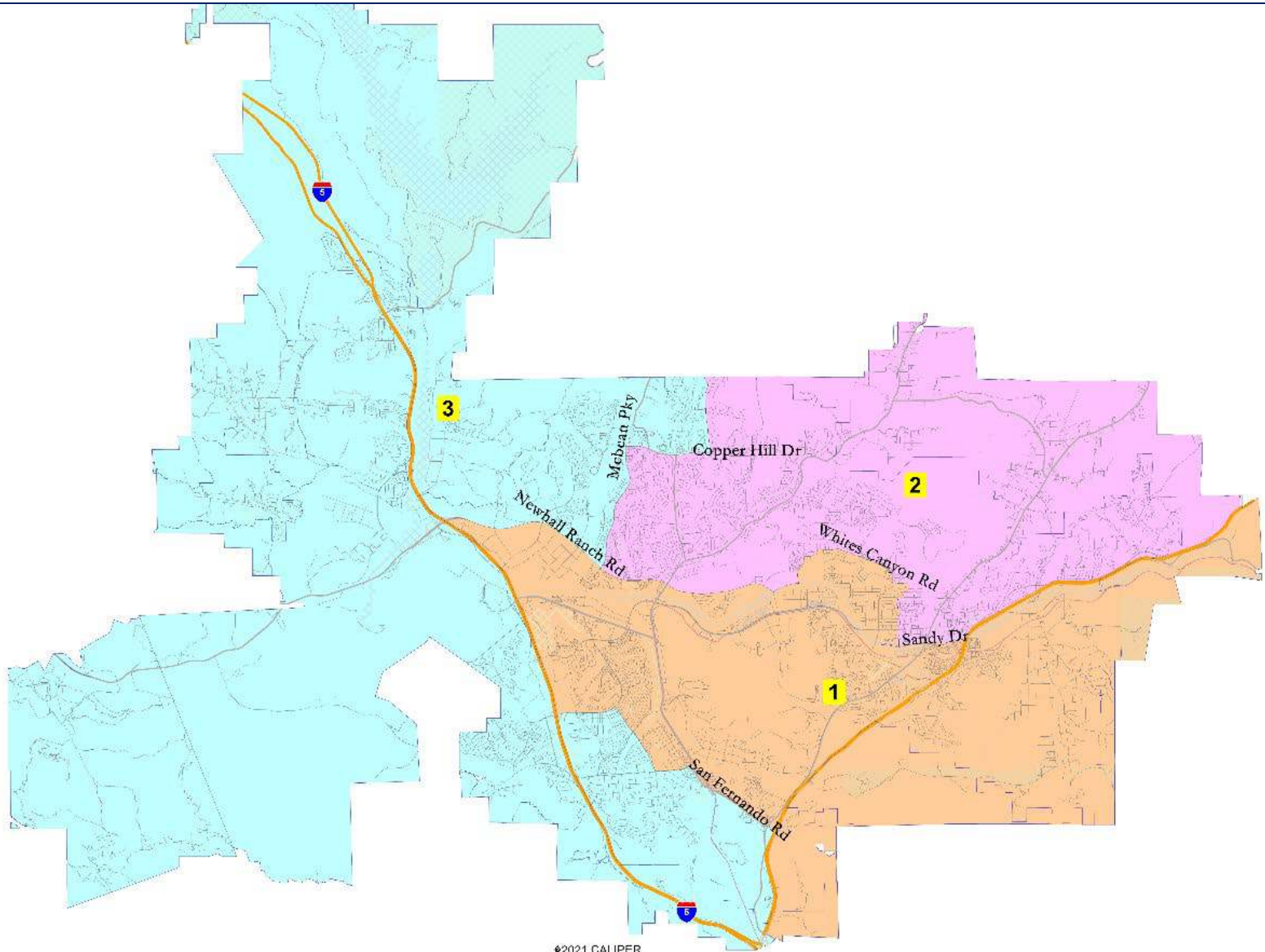
The History - Prior to SB 634

- Newhall County Water District:
 - 5 Directors elected at-large.
- Agency:
 - 11 Board members, 2 appointed, 9 elected.
 - Of the 9 elected Directors, 3 were elected at large, and there were 2 elected per division for three divisions.

SB 634 – January 1, 2018

- SB 634 established 3 electoral divisions.
- 15 Board members, reduces to 9 by January 1, 2023.
- After January 1, 2023, there will be three elected Directors for each of the three divisions and no appointed positions.
- District 36 appointed director position is eliminated on January 1, 2023.
- Current Board: 11 elected directors and 1 appointed director.

Current Electoral Divisions



New Census Data

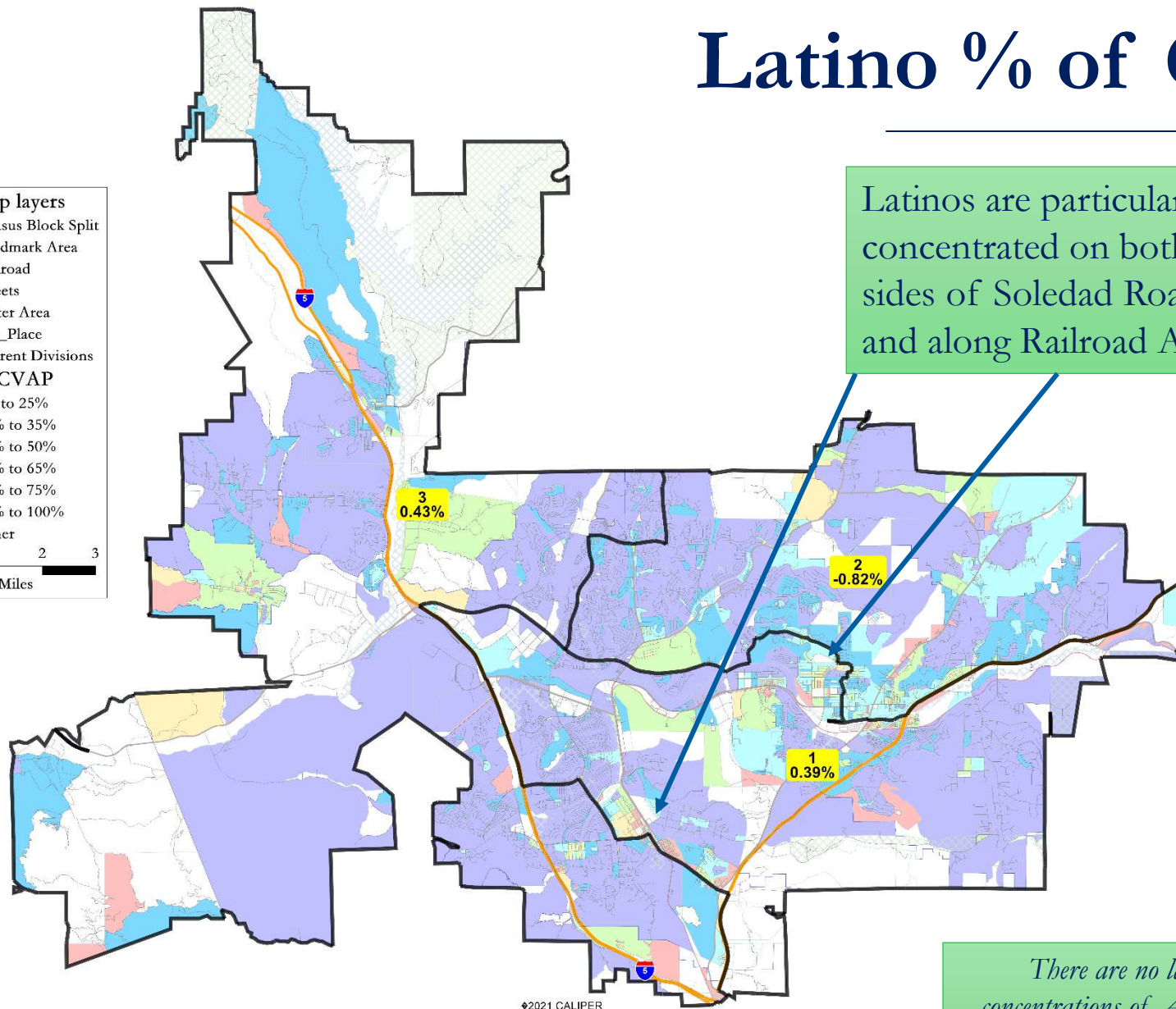
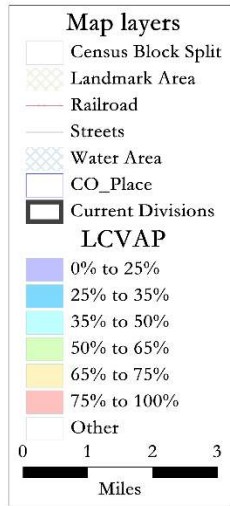
The current divisions are almost perfectly balanced in total population:

SCVWA Current Divisions					
District		1	2	3	Total
	Total Pop	95,698	94,541	95,730	285,969
	Deviation from Ideal	375	-782	407	1,189
	% Deviation	0.39%	-0.82%	0.43%	1.25%

No division is close to having a Latino or other protected class majority (though Latinos have a notably higher voting strength in Division1):

Citizen Voting Age Pop	Total	57,845	61,502	62,717	182,064
	% Hisp	31%	26%	23%	27%
	% NH White	51%	57%	55%	55%
	% NH Black	5%	4%	6%	5%
	% Asian/Pac.Isl.	11%	11%	14%	12%

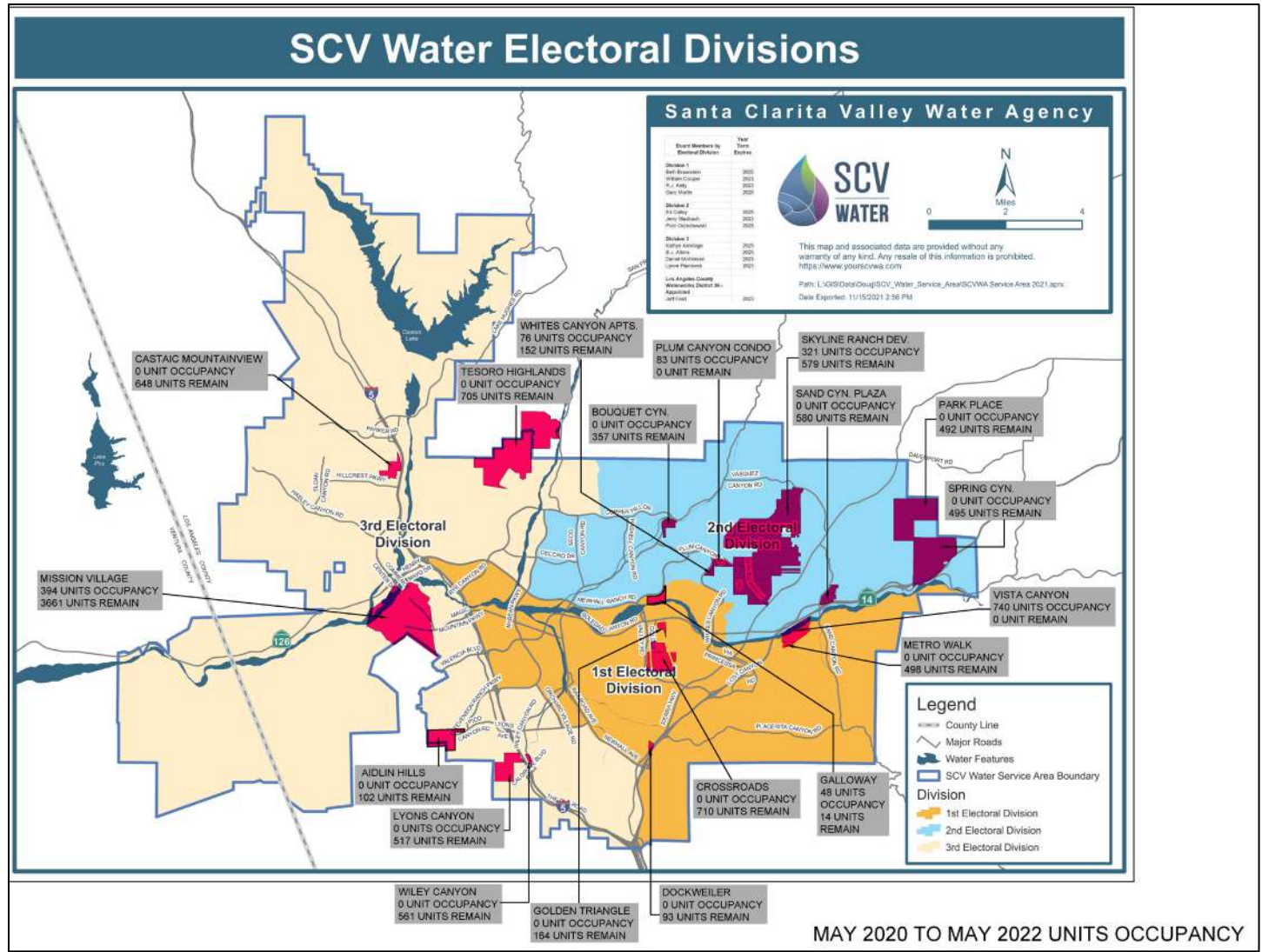
Latino % of CVAP



Latinos are particularly concentrated on both sides of Soledad Road and along Railroad Ave.

There are no large geographic concentrations of Asian-Americans or African-Americans.

Expected Growth



Population Projections

Projected Growth Stages					
Division	1	2	3	Total	Plan Dev.
2020 Population	95,698	94,541	95,730	285,969	1.25%
2022 Housing Units	788	480	394	1,662	
2022 Est. Population	97,999	95,943	96,880	290,822	2.12%
2025 Housing Units	1,285	1,846	2,174	5,305	
2025 Est. Population	99,450	99,931	102,078	301,460	2.62%
2030 Build out HU	2,267	3,135	6,588	11,990	
2030 Est. Population	102,318	103,695	114,967	320,980	11.82%

Assumptions:		
All planned developments completed on time.		
2.92 people per household unit.		
Average .33 build out by 2025.		

Existing divisions will be population balanced well past 2025.

Timeline and Next Steps

- January: Public hearing to receive input from public and Board.
- February: Additional public hearing to receive input from public and Board and consider draft map(s).
- March: 3rd public hearing if necessary.
- Map must be approved and submitted to the County by April 17, 2022.

Discussion

- Option 1: keep current divisions
 - Bring back resolution formally keeping current division map
- Option 2: revise divisions map
 - Bring back draft maps for Board consideration and direction
 - Possible additional Board meeting to adopt new map

