



Matthew S. Dickens, MPA
Resource Conservation Manager

Recycled Water Update

Customer Conversion Support - Purple PREP &
Required Use Ordinance

Water Resources and Watershed Committee
December 9, 2020
Item No. 2

Primary Objectives

1. Recycled Water Projects for Existing Customers
2. Customer Conversion Overview
3. Purple PREP Pilot Program
4. Draft Required Use Ordinance
5. Next Steps



Recycled Water
Planning, Readiness &
Effectuating Program

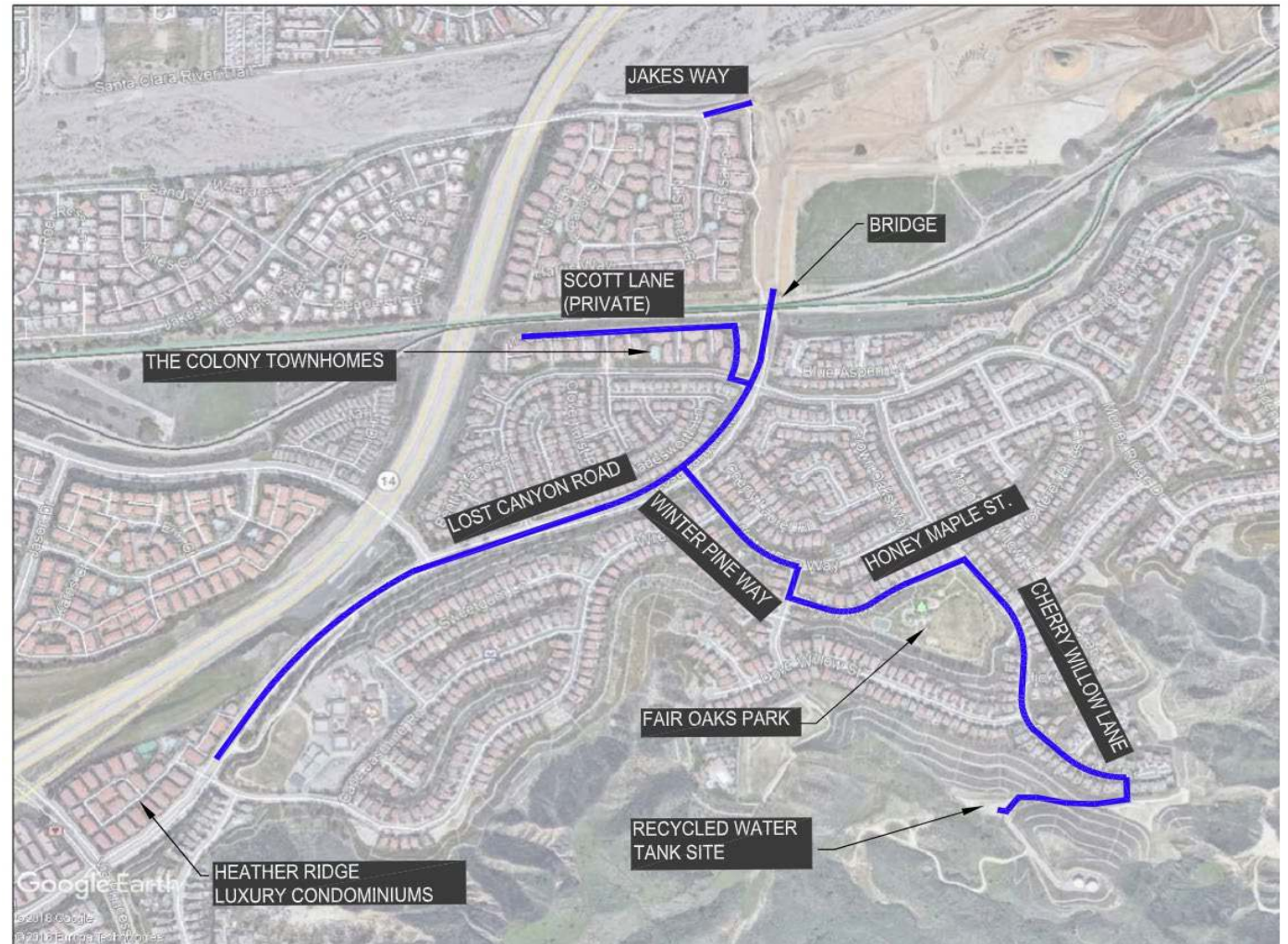


Recycled Water Projects for Existing Customers



Vista Canyon Recycled Water Main Extension (Phase 2B) Project

- ~17 existing irrigation meters
- 163 AFY of existing irrigation demands
- 10,870 L.F. (12", 8" and 6") DIP pipe
- 2 X 500,000 Gallon Tanks
- Connect to Water Factory



West Ranch Recycled Water Main Extension (Phase 2D) Project

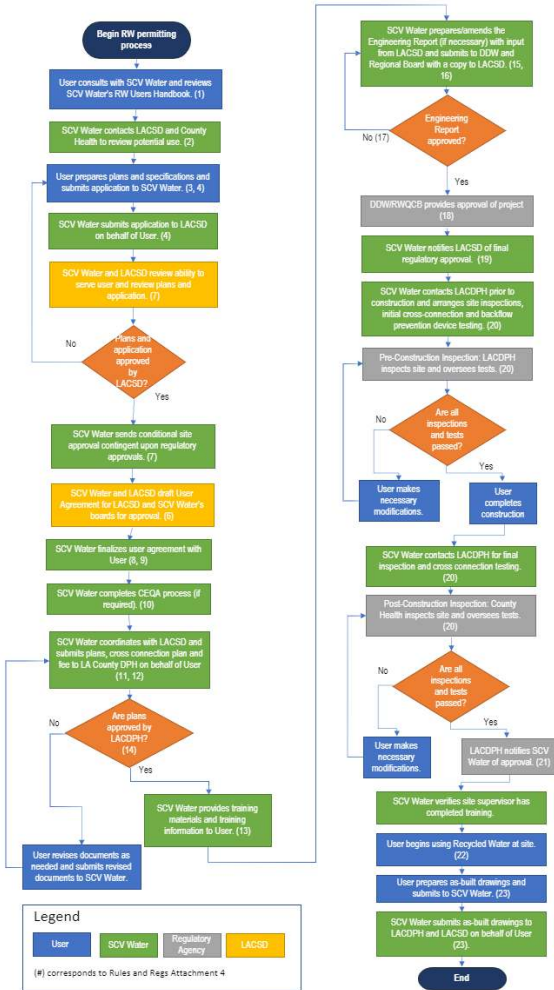
- ~20 existing irrigation meters
- 211 AFY of existing irrigation demands
- 4,850 L.F. (12" and 6") DIP pipe
- 1,000 gpm Pump Station
- 1 Hydropneumatic tank (2,500 Gallons)



Customer Conversion Overview

- Project Administration and Coordination
- Conversion Plan Preparation and Application
- Pre-Construction Modifications
- Construction
- Post-Construction Modifications
- Recycled Water Use
- As-Built Drawings and Submittal
- RW Site Maintenance Training & Use

Flowchart to Obtain Recycled Water Produced at LACSD's Valencia WRP Distributed by SCV Water - DRAFT



Purple PREP Pilot Program

- SCV Water staff met with customers to determine customer conversion requirements
- Customers identified that **technical, material, financial, construction, and administrative** support is critical for existing sites to retrofit irrigation systems
- SCV Water developed Purple PREP (Planning, Readiness, and Effectuating Program) to assist our customers with all regulatory compliance requirements and eliminate cost burdens to customers



Purple PREP Pilot Program

Component	Option A	Option B
Financial (Incentive or Cost Coverage)	\$150/AF x 5 Years	100%
Administrative	Partial	Full
Technical	Yes	Yes
Material	No	Yes
Construction	No	Yes
Rebate Transfer Eligibility	Yes	NA



Draft Required Use Ordinance

Recycled water: Water which, as a result of treatment of waste, is suitable for a direct beneficial use or a controlled use that would not otherwise occur and is therefore considered a valuable resource (Water Code §13050(n)).

Water Code §13550: Use of potable domestic water for nonpotable uses (Cemetaries, golf courses, parks, highway landscaped areas, industrial and irrigation uses) is a waste or unreasonable use if recycled water is available;

- Source must be adequate quality;
- Furnished at a reasonable cost;
- Not detrimental to public health;

Additional/Potential Uses of RW: Residential irrigation, cooling towers, air-conditioning devices, floor trap priming, toilet and urinal flushing (Water Code §13552.6-13554).



Draft Required Use Ordinance

Purpose(s):

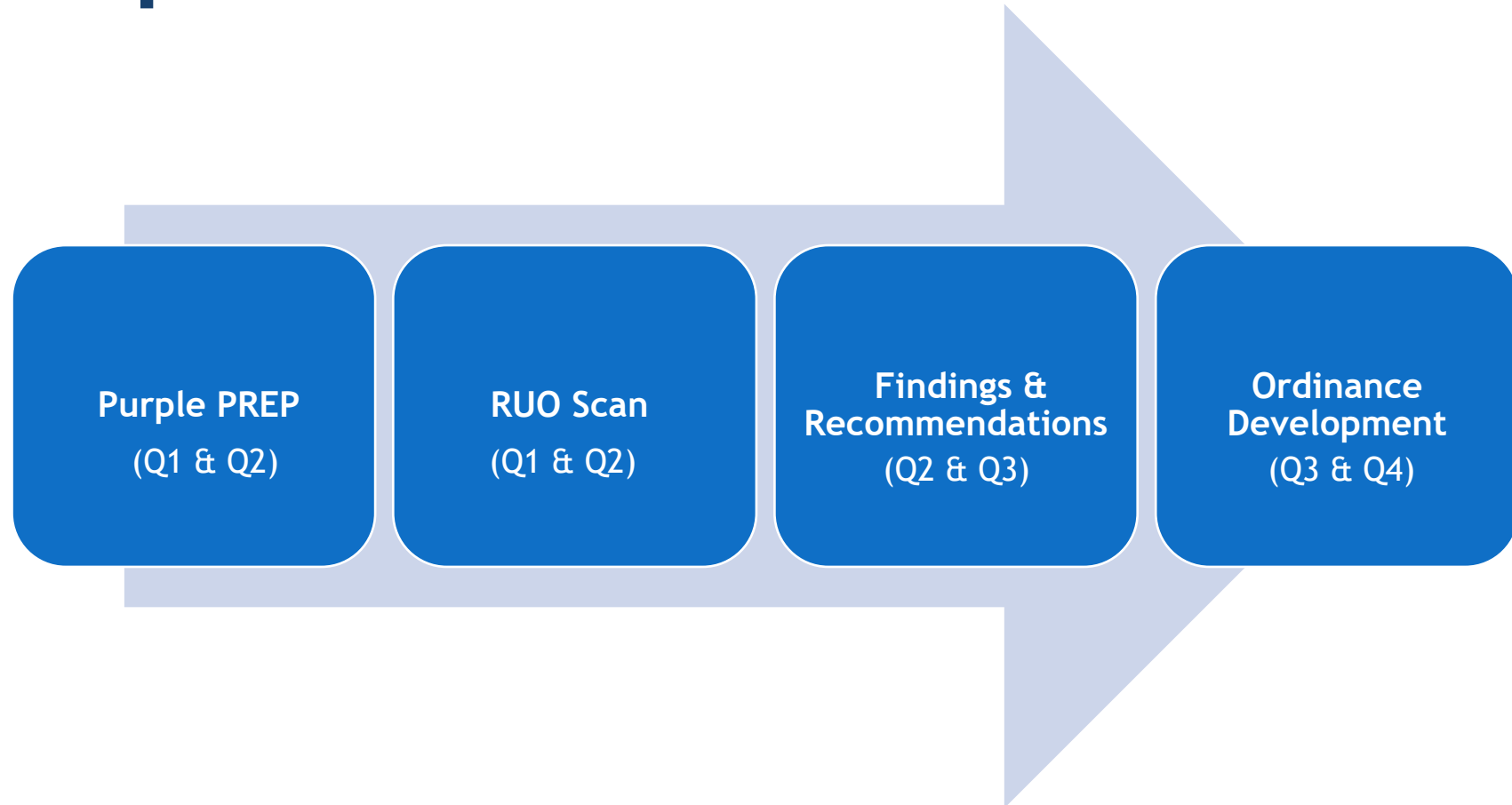
- Allowable uses include: landscape irrigation, agricultural irrigation, building evaporative cooling and HVAC, industrial process water, and construction water.
- Supports SCV Water's sustainability and water conservation goals.
- Requires use of recycled water for all approved uses where economical and practical.

Key Components:

- Required use for landscapes >2,500 square feet or use >50,000 gallons annually.
- Required use for non-exempt parcels where recycled water is available.
- Required use for fronting parcels pursuant to new recycled water distribution mains.



Next Steps



Thank You



Matthew S. Dickens, MPA
Resource Conservation Manager
SCV Water
mdickens@scvwa.org

Janet Keith
Water Conservation Specialist II
SCV Water
Jkeith@scvwa.org

