



February 4, 2021

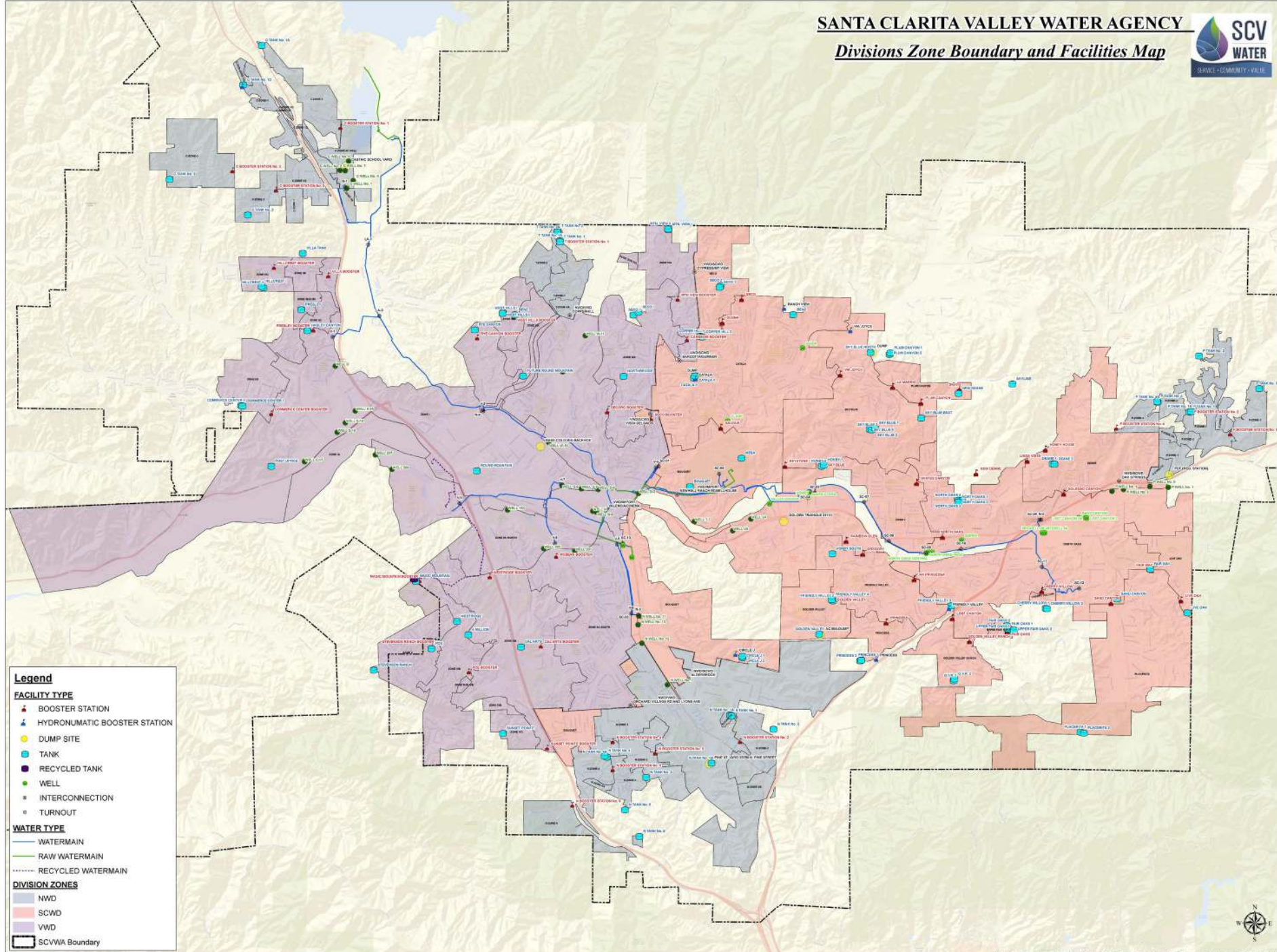
West Newhall Interconnections

**Engineering & Operations
Committee**

What are interconnections and why are they important?

- A connection between two separate service areas
- Provide operational flexibility and the ability to distribute water throughout the entire service area
- SCV Water currently has 6 separate service areas
 - Castaic
 - Newhall
 - Pinetree
 - Valencia
 - Santa Clarita
 - Tesoro





Legend

FACILITY TYPE

- ▲ BOOSTER STATION
- ▲ HYDRONUMATIC BOOSTER STATION
- DUMP SITE
- TANK
- RECYCLED TANK
- WELL
- INTERCONNECTION
- TURNOUT

WATER TYPE

- WATERMAIN
- RAW WATERMAIN
- RECYCLED WATERMAIN

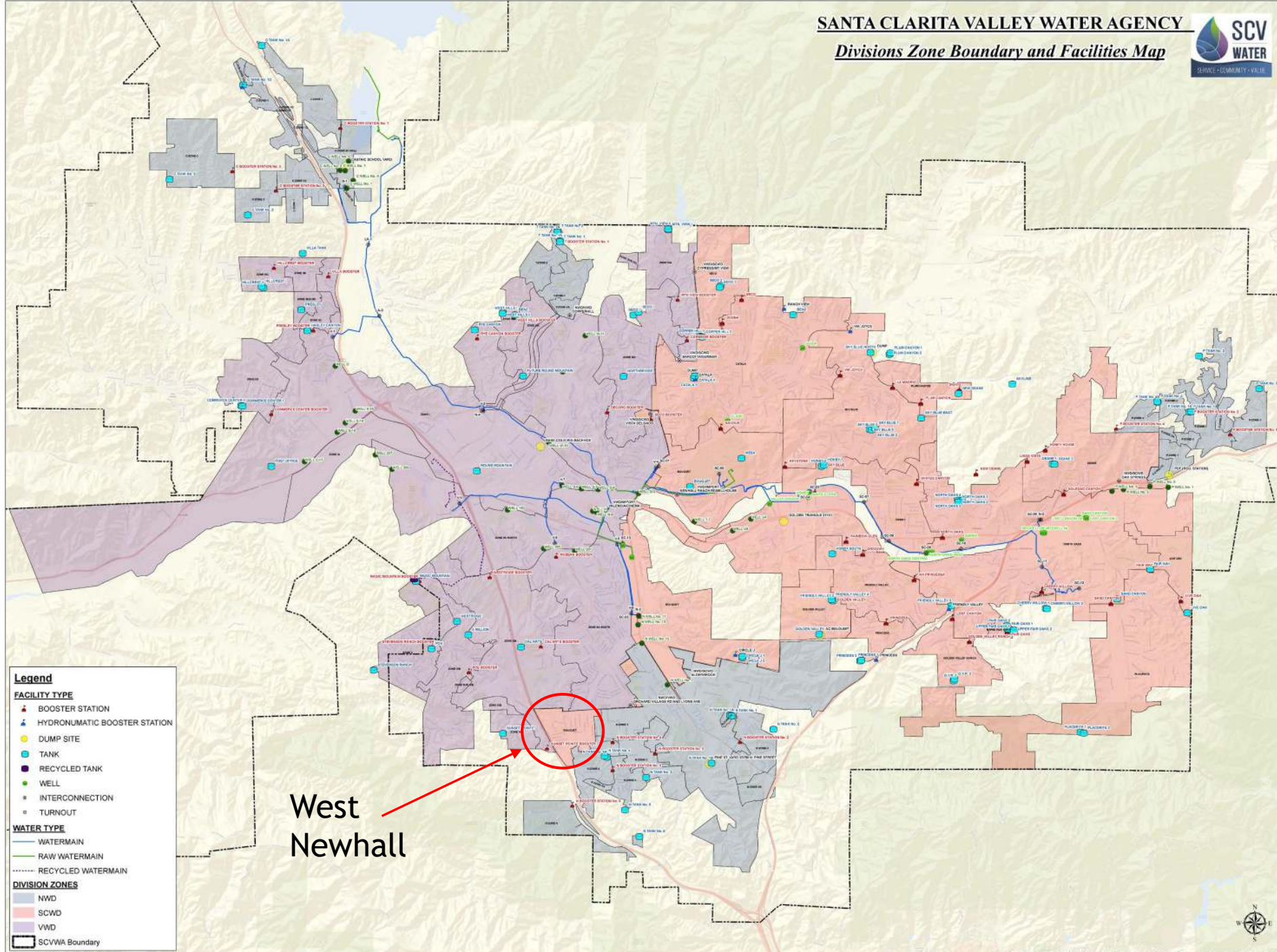
DIVISION ZONES

- NWD
- SCWD
- VWD
- SCVWA Boundary

Existing SCVWA Interconnections

- Prior to SCV Water
 - Pinetree/Santa Clarita - Oak Springs Road
 - Newhall/Santa Clarita - Alderbrook Drive
 - Newhall/Valencia - Lyons Avenue
 - Santa Clarita/Valencia - Vista Delgado Drive
 - Santa Clarita/Valencia - Barcotta Drive
 - Tesoro/Valencia - Copperhill Drive
 - Regional/Valencia - Millhouse Drive
 - Regional/Valencia - Cinema Drive
- SCV Water
 - Santa Clarita/Valencia - Seco Canyon Road
 - Tesoro/Valencia - Copperhill Drive





Legend

FACILITY TYPE

- ▲ BOOSTER STATION
- ▲ HYDRONUMATIC BOOSTER STATION
- DUMP SITE
- TANK
- RECYCLED TANK
- WELL
- INTERCONNECTION
- TURNOUT

WATER TYPE

- WATERMAIN
- RAW WATERMAIN
- RECYCLED WATERMAIN

DIVISION ZONES

- NWD
- SCWD
- VWD
- SCVWA Boundary

West Newhall

Proposed Interconnection - West Newhall

- The West Newhall area is within the Santa Clarita service area, bordering the Newhall and Valencia service areas
- A hydraulic model conducted by Akel Engineering identified several locations where fire flow requirements are not met within this part of the system
- The model looked at several locations for interconnections
 - Newhall/Santa Clarita - Lyons Avenue
 - Newhall/Santa Clarita - Old Wiley Canyon Road
 - Valencia/Santa Clarita - Vista Ridge Drive
- Model results recommended two interconnections
 - Newhall/Santa Clarita - Old Wiley Canyon Road
 - Valencia/Santa Clarita - Vista Ridge Drive



West Newhall Interconnections FY2021 Interconnection Estimate

- Total Budget = \$400,000
- Project Cost = \$345,000
- Staff labor/equipment = ~25% of project cost
- Paving estimate is >\$30,000 and will require public bidding
 - Paving and Traffic Controls Plans required
 - Request for Proposal will be advertised



West Newhall Interconnections CEQA Exempt

- According to Section 15282(k) of the California Environmental Quality Act, the installation of new pipelines as set forth in Section 21080.21 of the Public Resources Code is considered statutorily exempt as long as the project does not exceed one mile in length. Therefore, a Notice of Exemption for CEQA under Section 15282(k) will be filed for this project.

West Newhall Interconnections Financial Considerations

- Funds for this project are included in the Divisional Pay Go FY 2020/21 Capital Interconnection Improvement Budget in the amount of \$400,000.



West Newhall Interconnections Recommendation

That the Engineering and Operations Committee recommends that the Board of Directors:

Find this project to be exempt from CEQA and authorize the General Manager to direct staff to complete this project in an amount not to exceed \$400,000.

Questions?

