

ABOUT THE DROUGHT

STATUS OF DROUGHT RESPONSE AND PERFORMANCE

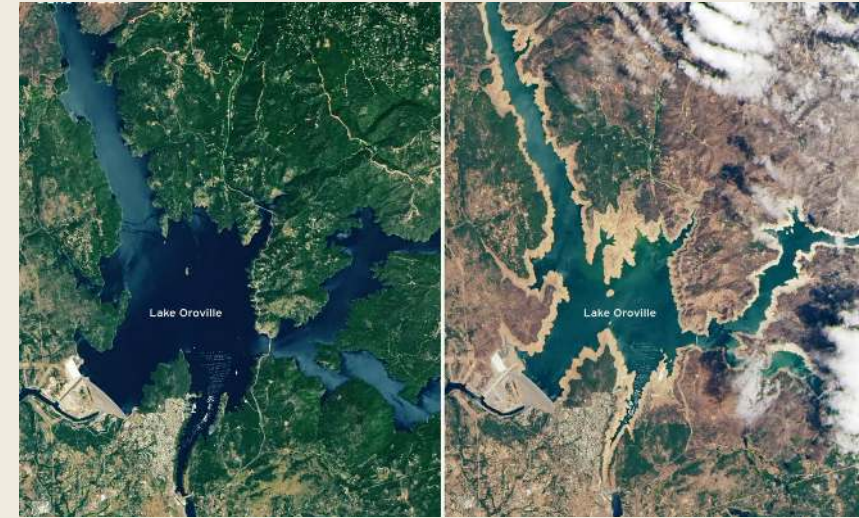
MATTHEW DICKENS, MPA
SUSTAINABILITY MANAGER



Water Resources and Watershed Committee
September 8, 2021
Item No. 5.2

PRESENTATION OVERVIEW

1. CALIFORNIA DROUGHT STATISTICS
2. LOCAL DROUGHT STATISTICS
3. REGULATORY STATUS
4. DEMAND PERFORMANCE
5. SCV WATER – DROUGHT READY
6. ON THE RADAR
7. QUESTIONS AND ANSWERS



Lake Oroville (2020 v. 2021)





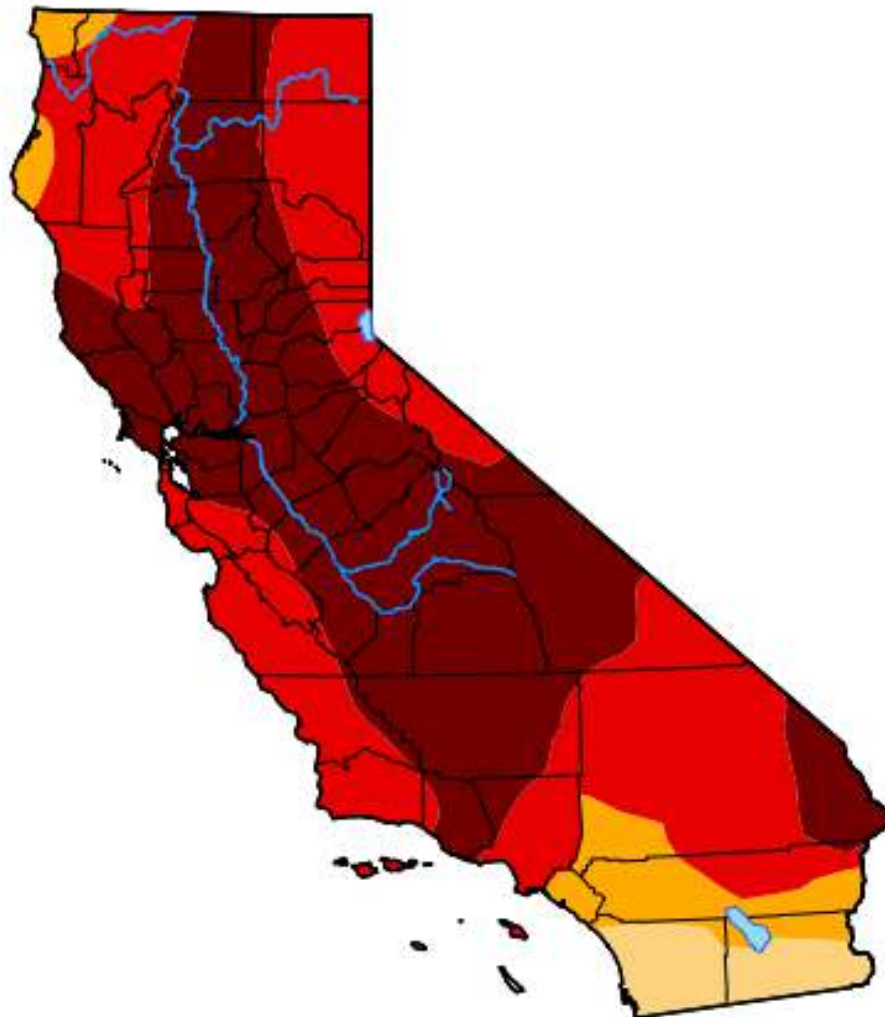
CA DROUGHT STATISTICS

**DROUGHT STATUS, RESERVOIRS, PRECIPITATION,
SNOWPACK**

CA DROUGHT STATISTICS

U.S. Drought Monitor California

August 31, 2021
(Released Thursday, Sep. 2, 2021)
Valid 8 a.m. EDT



Drought Conditions (Percent Area)

	None	D0-D4	D1-D4	D2-D4	D3-D4	D4
Current	0.00	100.00	100.00	95.56	88.37	47.40
Last Week 08-24-2021	0.00	100.00	100.00	95.58	88.37	47.40
3 Months Ago 06-01-2021	0.00	100.00	100.00	94.61	74.46	26.04
Start of Calendar Year 12-29-2020	0.00	100.00	95.17	74.34	33.75	1.19
Start of Water Year 09-29-2020	15.35	84.85	67.65	35.82	12.74	0.00
One Year Ago 09-01-2020	20.39	79.61	54.38	31.78	3.04	0.00

Intensity:

- None
- D0 Abnormally Dry
- D1 Moderate Drought
- D2 Severe Drought
- D3 Extreme Drought
- D4 Exceptional Drought

The Drought Monitor focuses on broad-scale conditions. Local conditions may vary. For more information on the Drought Monitor, go to <https://droughtmonitor.unl.edu/About.aspx>

Author:

David Simeral
Western Regional Climate Center



droughtmonitor.unl.edu



REGULATORY STATUS

STATE & LOCAL

REGULATORY UPDATES

1. GOVERNOR EMERGENCY DECLARATIONS

1. April 21, 2021 (2 Counties)
2. May 10, 2021 (Extended to 41 Counties)
3. July 9, 2021 (Extended to 50 Counties & 15% Voluntary Conservation v. 2020)
4. *September/October 2021 Announcement Anticipated



2. SCV WATER – WATER SHORTAGE CONTINGENCY PLAN

1. No Water Shortage Declaration
2. Active Conservation Program Levels Remain
3. Drought Communication & Engagement Enhancements





LOCAL DROUGHT STATISTICS

EVAPOTRANSPIRATION, PRECIPITATION,
TEMPERATURES

LOCAL DROUGHT STATISTICS

LOCAL ET & PRECIPITATION



Evapotranspiration (2020 v. 2021)

- Current Month → -6.4%
- Year to Date → +4.4%



Precipitation (2020 v. 2021)

- Current Month → 0%
- Year to Date → -75%



Temperatures (Days > 90°)

- July 2020 → 25
- July 2021 → 22

Current Conditions for Los Angeles County

[View More National Drought Maps](#)

[U.S. Drought Monitor](#) [Temperature \(30-Day Departure from Normal\)](#) [Precipitation \(30-Day % of Normal\)](#)

The U.S. Drought Monitor (USDM) is updated each Thursday to show the location and intensity of drought across the country using a five-category system, from Abnormally Dry (D0) conditions to Exceptional Drought (D4). The USDM is a joint effort of the National Drought Mitigation Center, USDA, and NOAA. [Learn more.](#)

D0 - Abnormally Dry 100.00% of Los Angeles County (D0-D4)

- Soil is dry; irrigation delivery begins early
- Dryland crop germination is stunted
- Active fire season begins

D1 - Moderate Drought 100.00% of Los Angeles County (D1-D4)

- Dryland pasture growth is stunted; producers give supplemental feed to cattle
- Landscaping and gardens need irrigation earlier; wildlife patterns begin to change
- Stock ponds and creeks are lower than usual

D2 - Severe Drought 98.59% of Los Angeles County (D2-D4)

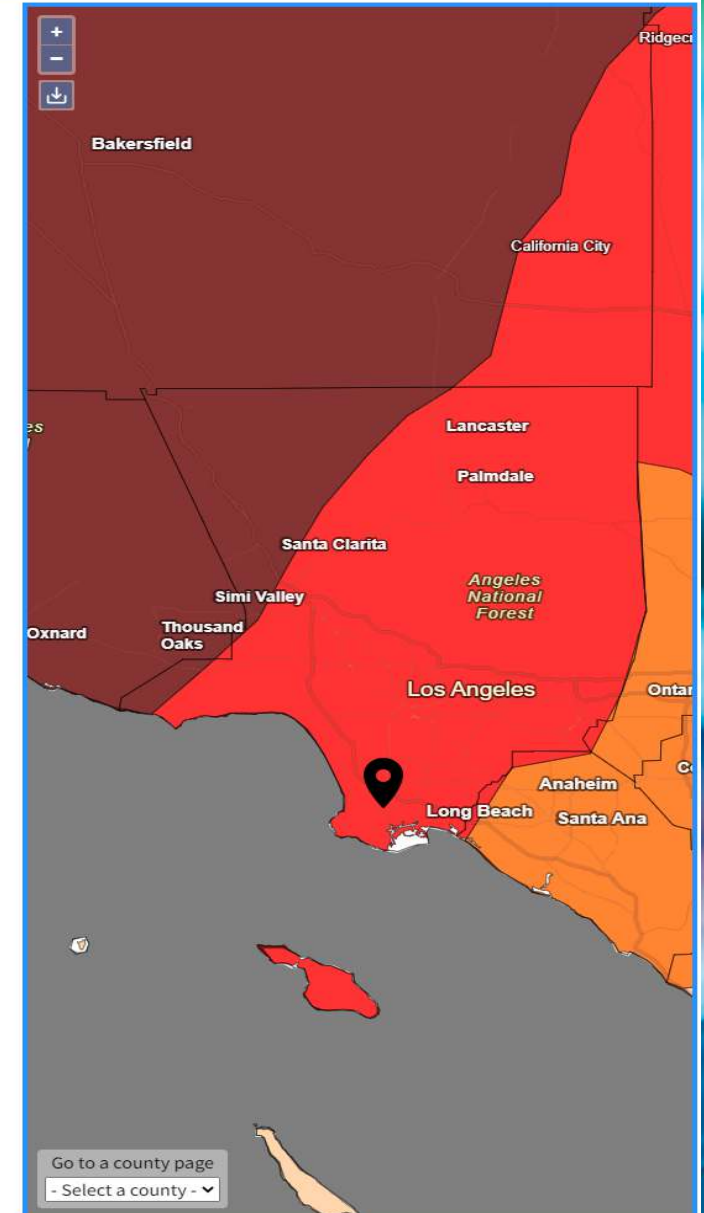
- Grazing land is inadequate
- Fire season is longer, with high burn intensity, dry fuels, and large fire spatial extent
- Trees are stressed; plants increase reproductive mechanisms; wildlife diseases increase

D3 - Extreme Drought 98.58% of Los Angeles County (D3-D4)

- Livestock need expensive supplemental feed; cattle and horses are sold; little pasture remains; fruit trees bud early; producers begin irrigating in the winter
- Fire season lasts year-round; fires occur in typically wet parts of state; burn bans are implemented
- Water is inadequate for agriculture, wildlife, and urban needs; reservoirs are extremely low; hydropower is restricted

D4 - Exceptional Drought 19.99% of Los Angeles County (D4)

- Fields are left fallow; orchards are removed; vegetable yields are low; honey harvest is small
- Fire season is very costly; number of fires and area burned are extensive
- Fish rescue and relocation begins; pine beetle infestation occurs; forest mortality is high; wetlands dry up; survival of native plants and animals is low; fewer wildflowers bloom; wildlife death is widespread; algae blooms appear



Source(s): U.S. Drought Monitor

Updated weekly - 08/03/21



SCV WATER DEMAND PERFORMANCE

**NORMAL CONSERVATION & DROUGHT RESPONSE
TARGETS**

SCV WATER DEMAND PERFORMANCE

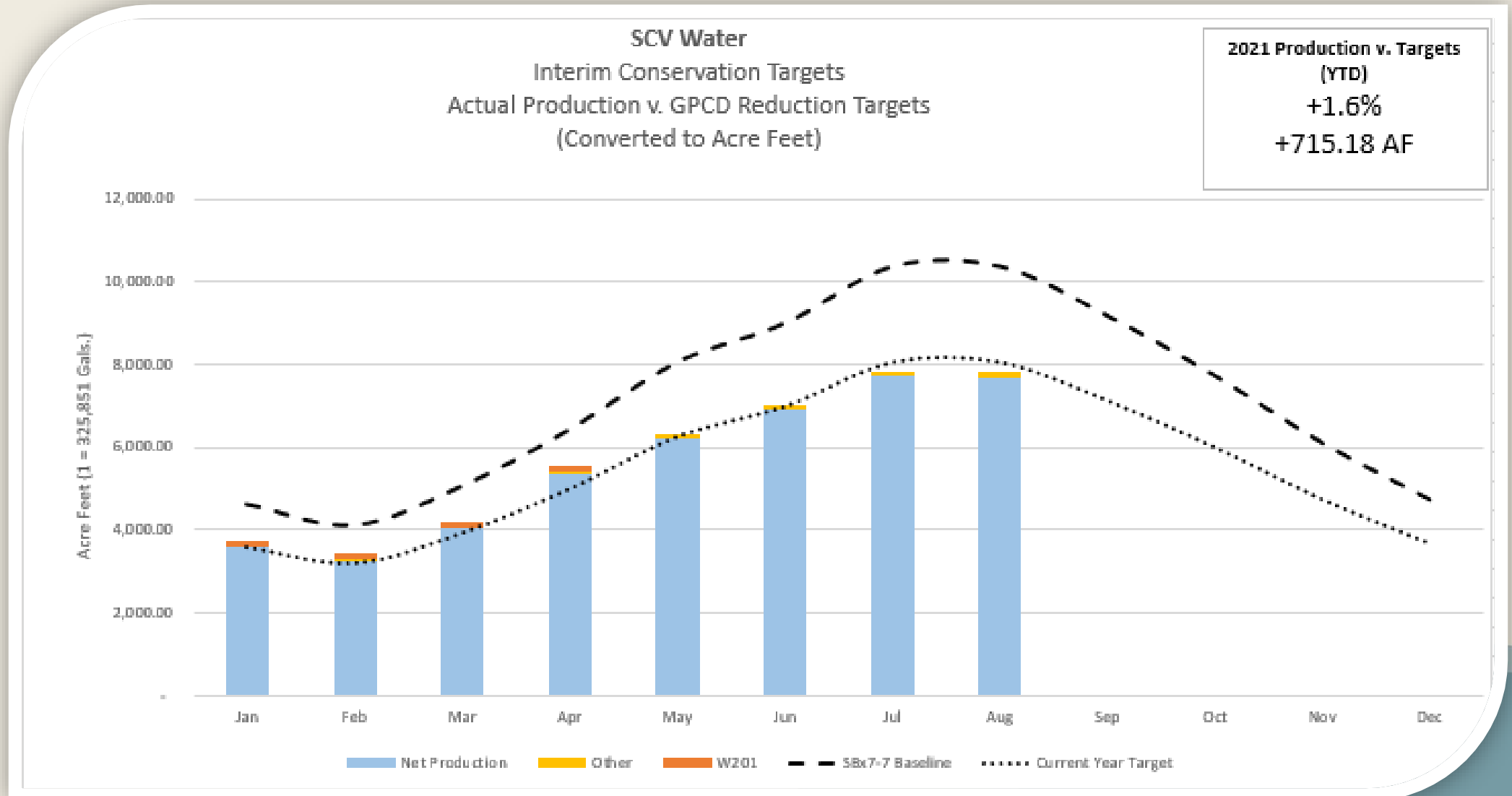
DEMAND/CONSUMPTION PERFORMANCE

1. Normal Conservation Target Performance
2. Drought Conservation Target (15% v. 2020)
3. Performance by Customer Class



INTERIM CONSERVATION TARGET – PERFORMANCE

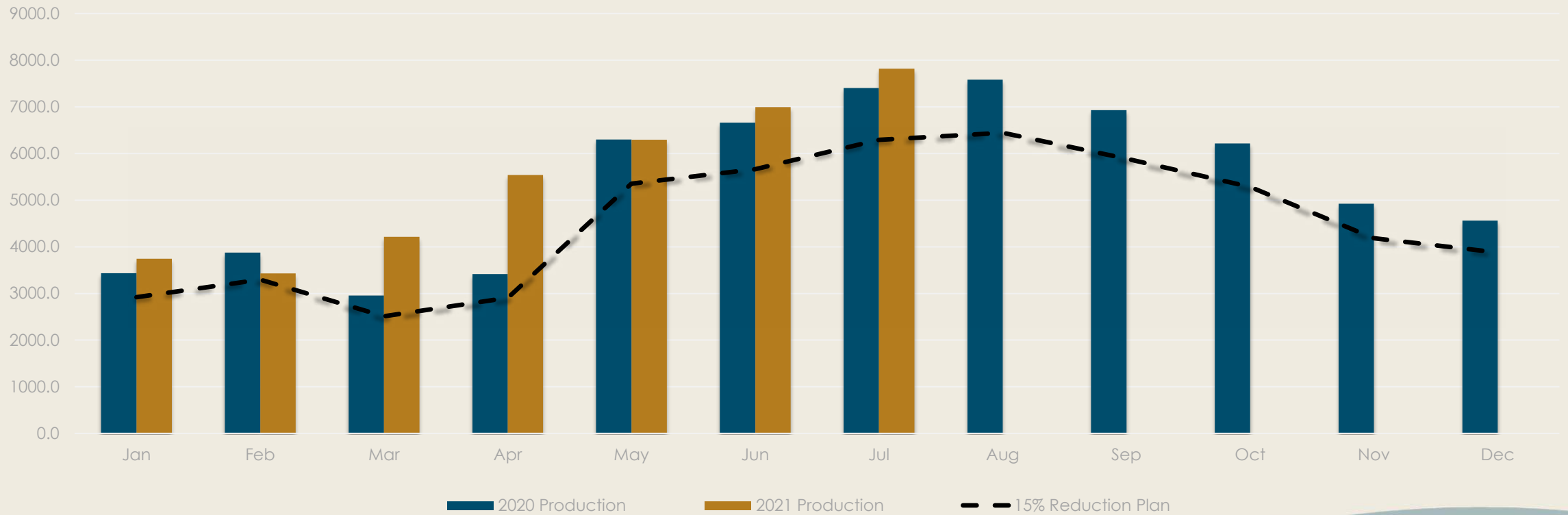
INTERIM WATER CONSERVATION TARGET (22% BY 2021)



DROUGHT CONSERVATION TARGET

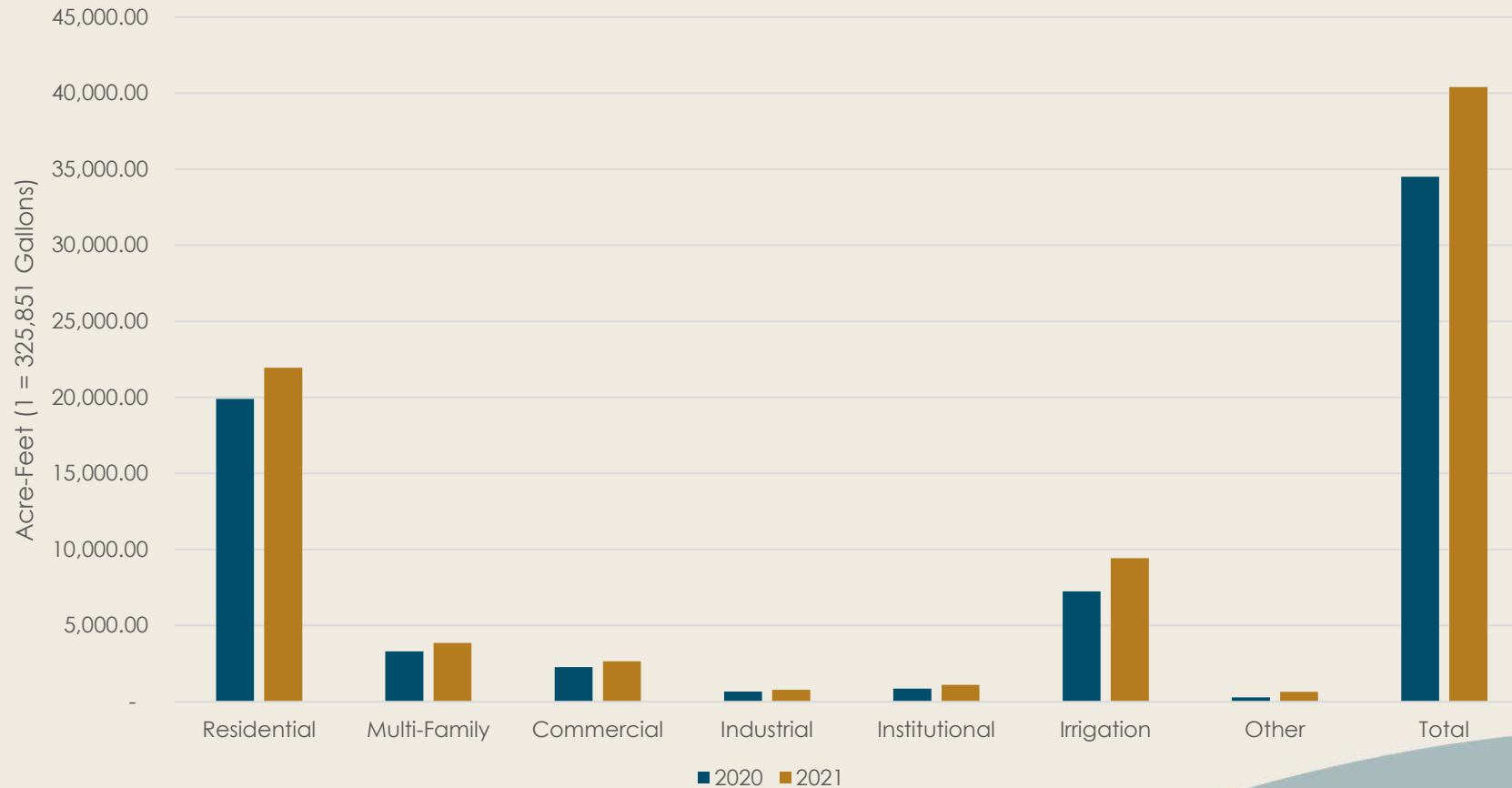
VOLUNTARY DROUGHT CONSERVATION TARGET (15% V. 2020)

SCV Water
Monthly Production vs. 15% Reduction Plan (Ac-ft)



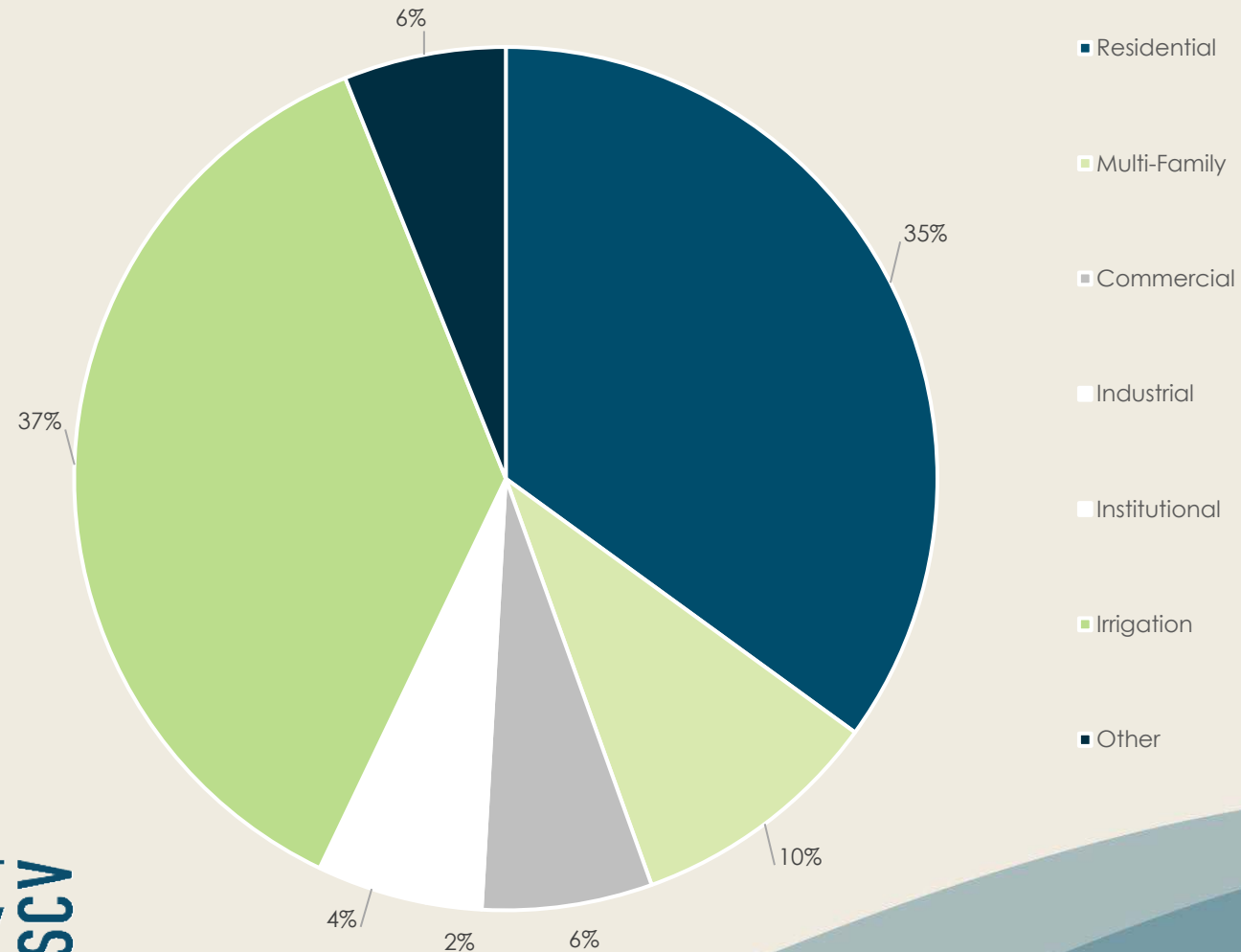
PERFORMANCE BY CUSTOMER CLASS

SCV Water
Sales by Customer Class
2020 v. 2021
(Jan-Sep)



PERFORMANCE BY CUSTOMER CLASS

SCV Water
Percent of Increase in Sales
2020 v. 2021

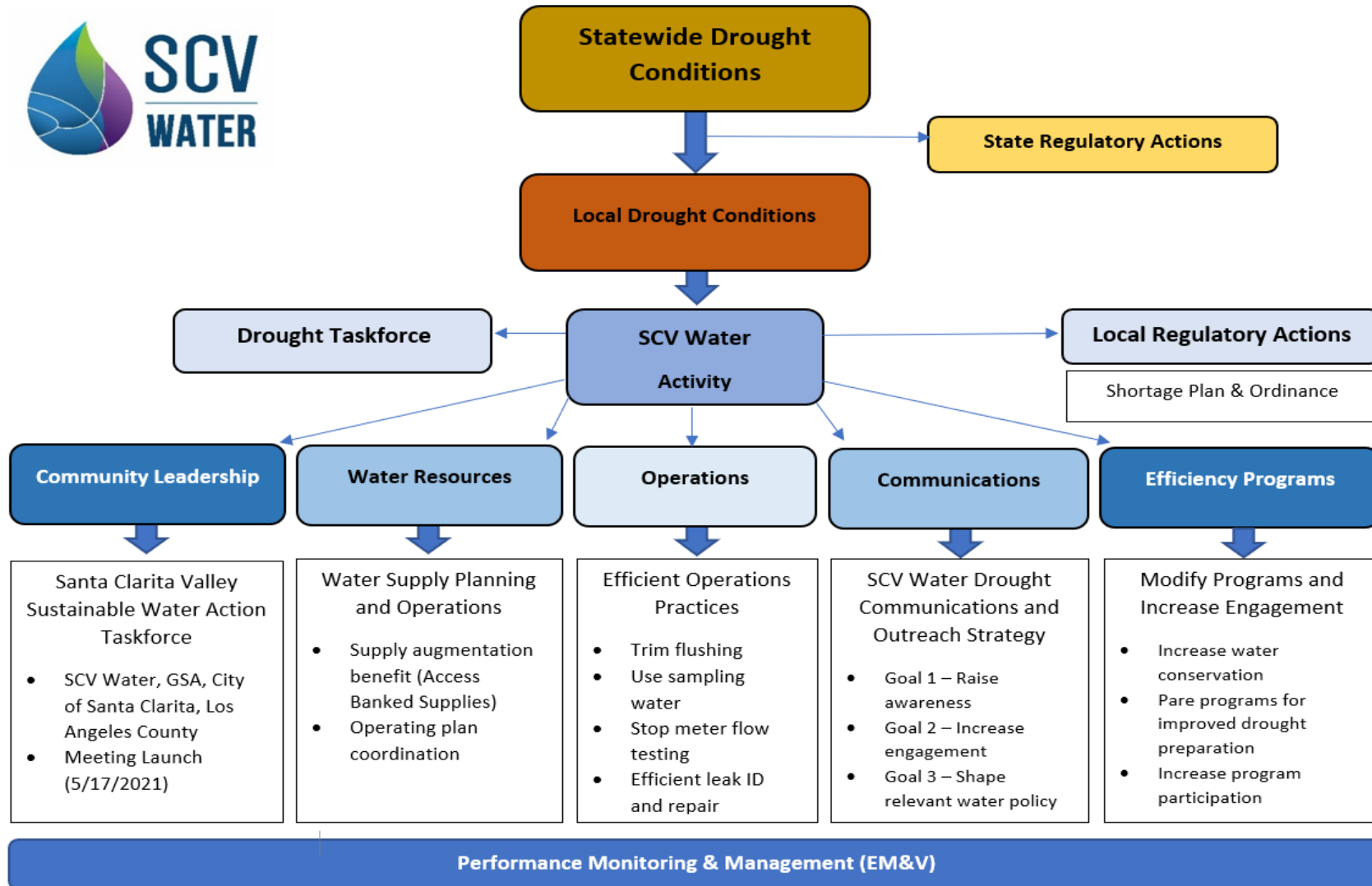




SCV WATER DROUGHT READY

DROUGHT RESPONSE & COMMUNITY LEADERSHIP

SCV WATER – DROUGHT RESPONSE OVERVIEW



COMMUNICATIONS

- WEBSITE
- SOCIAL MEDIA
- MEDIA & ADS
- COLLATERAL
- ENGLISH/SPANISH



Currently, Los Angeles County, including the Santa Clarita Valley, is experiencing an **“extreme drought”** and our local precipitation level is on track to be the driest year on record. **California Governor Newsom** has also declared a drought emergency for many counties throughout the state and asked for all Californians to **voluntarily reduce their water use by 15% compared to 2020**.

While this news sounds grim, SCV Water is drought-ready. Our dedicated SCV Water team has always planned for the (un)rainy day. We are hard at work implementing strategies for drought-resilient water supplies and water-wise initiatives to ensure we can meet our community's water needs today and for many years to come.

But we need our customers' help! We must all do our part to save Mother Nature's finest resource: H₂O.

CURRENT CONDITIONS

Learn more about our current statewide drought conditions by visiting the California [drought monitor page](#).



DROUGHT IS HERE.



You've come to the right place! Scroll down to view our water-saving resources. Find educational opportunities, tips, and rebates to help you save 15%. Let's work together to save!



SCV WATER – SCV WATER (FACILITY CHECK-UPS)



- ADMIN FACILITIES
- HE IMPROVEMENTS
- EFFICIENCY OPPORTUNITIES
- LEAK DETECTION
- IRRIGATION INSPECTION
- INFORMATION DISSEMINATION



ON THE RADAR

THIRTY TO SIXTY DAY OUTLOOK

ON THE RADAR

STANDING PROGRAMS FORMAT

Limited offerings due to COVID safety protocols

DROUGHT READY CHECK-UP

Leak check, irrigation inspection, water efficiency kits, hose nozzles, shower timers, push broom

DROUGHT READY VIDEO

PILOT PROGRAMS

Sprinkler body check-valves, and irrigation flow sensors with master valve control





Q&A

SCV WATER DROUGHT RESPONSE AND DEMAND PERFORMANCE