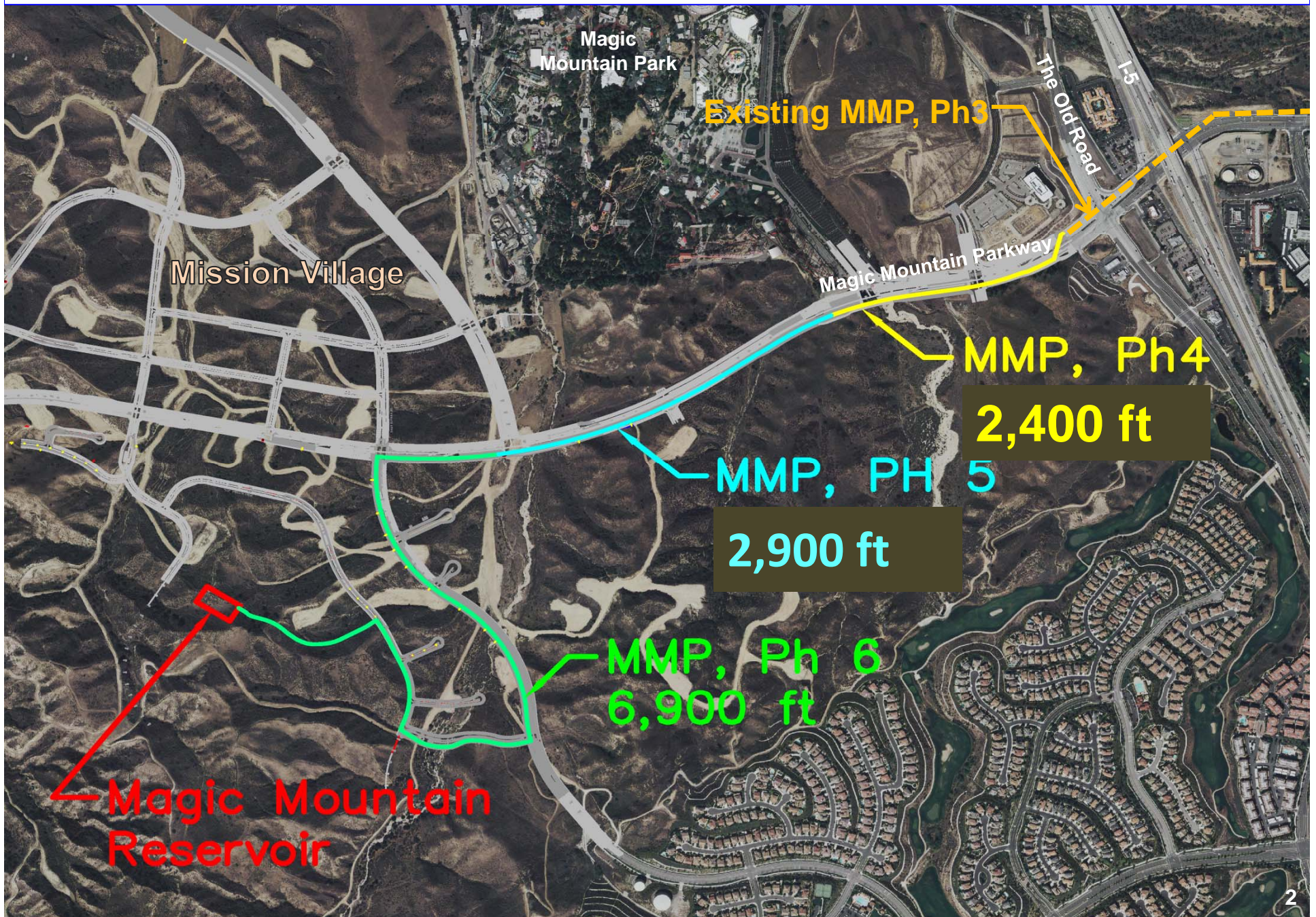




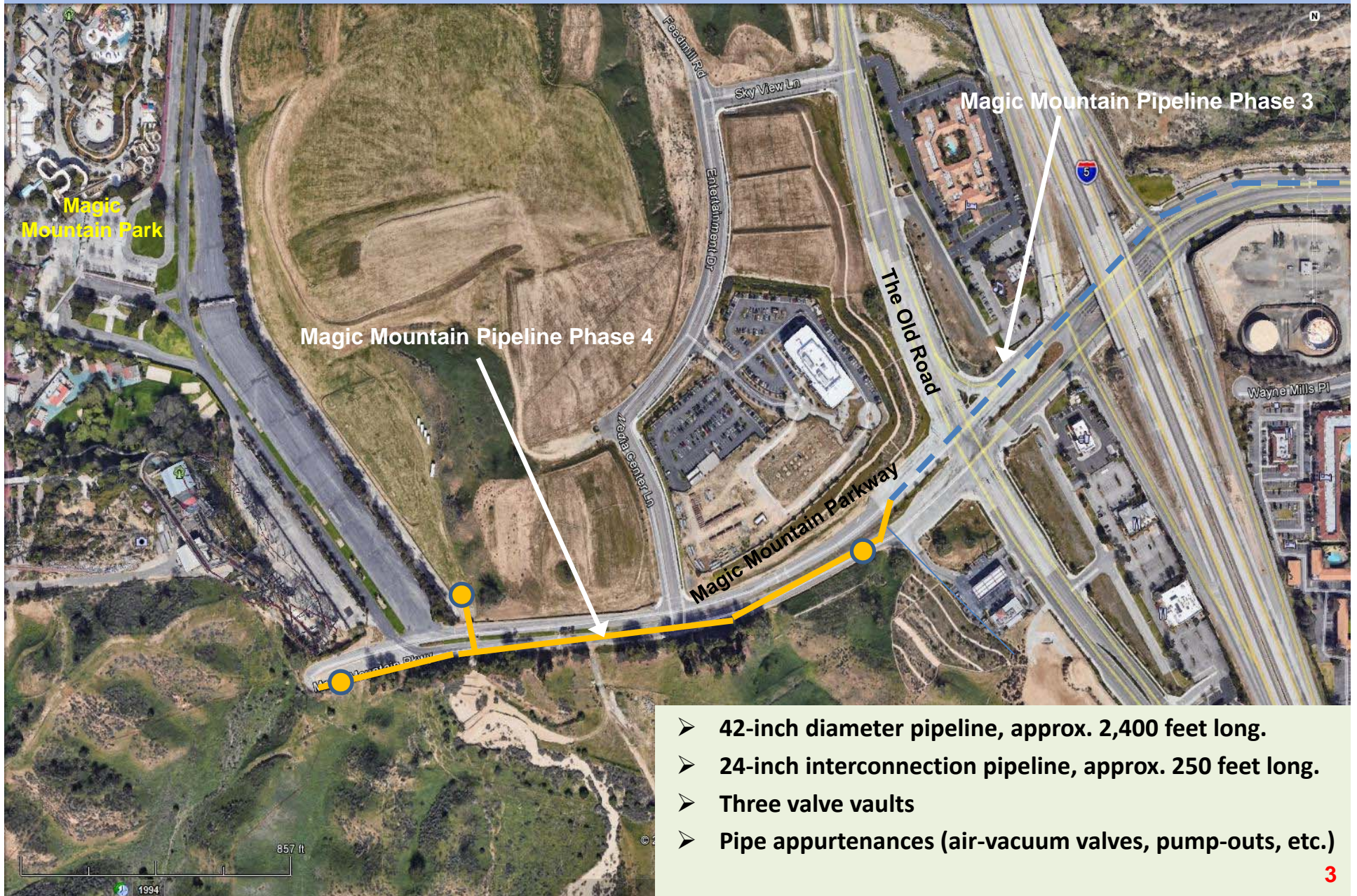
Magic Mountain Pipeline Phase 4 Project

Board Meeting
September 4, 2018

Magic Mountain Pipeline (MMP), Phases 4-6



Magic Mountain Pipeline Phase 4 Project



- 42-inch diameter pipeline, approx. 2,400 feet long.
- 24-inch interconnection pipeline, approx. 250 feet long.
- Three valve vaults
- Pipe appurtenances (air-vacuum valves, pump-outs, etc.)

Magic Mountain Pipeline Phase 4 Completed Activities

- **February 11, 2015: CLWA Board of Directors authorized the General Manager to execute the Magic Mountain Water Pipeline Installation Agreement.**
 - **Newhall Land will construct the pipeline improvements and manage construction as part of the road improvements.**
 - **SCVWA will pay Newhall Land (construction and construction management costs)**
 - **SCVWA will perform construction inspection.**

- **May 1, 2018 – July 11, 2018: Construction Bidding by Newhall Land.**

- **July 11, 2018: Two (2) Construction Bids received by Newhall Land.**

- **July 12, 2018: Newhall Land reviewed the bids and recommended Toro Enterprises Inc. (Toro) for construction contract award.**

| Bidder | Total Base Bid Price |
|--------------------------------------|----------------------|
| Toro Enterprises Inc. (Oxnard, CA) | \$3,084,725 |
| Blois Construction Inc. (Oxnard, CA) | \$4,140,291 |

Engineer's Estimate: \$3,443,963

Magic Mountain Pipeline Phase 4 Project Budget

➤ **Construction:**

| | |
|----------------------------|--------------------|
| Toro's Total Bid Price | \$3,084,725 |
| Additional 10% budget | \$308,473 |
| Construction Budget | \$3,393,198 |

➤ **General Manager's Change Order Authority increase from 4% to 10%**

➤ **Construction Management and Inspection:**

| | |
|--|------------------|
| Newhall Land (construction management and miscellaneous costs) | \$234,300 |
| Kennedy/Jenks Consultants (inspection) | \$285,000 |
| Construction Management and Inspection Budget | \$519,300 |

➤ **SCVWA CIP Budget:**

| | |
|---|--------------------|
| Planning and Conceptual Design | \$5,000 |
| Design | \$163,000 |
| Construction Management and Engineering | \$691,000 |
| Capital Construction Costs | \$3,900,000 |
| Additional Project Delivery Costs | \$6,000 |
| Current Estimated Total Project Cost | \$4,765,000 |

Magic Mountain Pipeline Phase 4 Project Schedule

- **August 2, 2018: Engineering & Operations Committee (construction funding)**
- **September 4, 2018: Board Meeting (construction funding)**
- **October 15, 2018 – April 10, 2019: Construction Period (145 working days)**

Magic Mountain Pipeline Phase 4 Recommendation

The Engineering and Operations Committee recommends that the Board of Directors

- (1) approve the resolution awarding funding in an amount not to exceed \$3,393,198 for construction costs and \$234,300 for construction management and miscellaneous costs to The Newhall Land and Farming Company, LLC, and authorize the General Manager to execute construction change orders up to ten percent (10%) of the original construction contract, and**
- (2) Authorize the General Manager to execute a work authorization with Kennedy/Jenks Consultants for an amount not exceed \$285,000 for inspection services for the Magic Mountain Pipeline Phase 4 Project.**