



March 5, 2019

# Foothill Feeder Connection Project Update

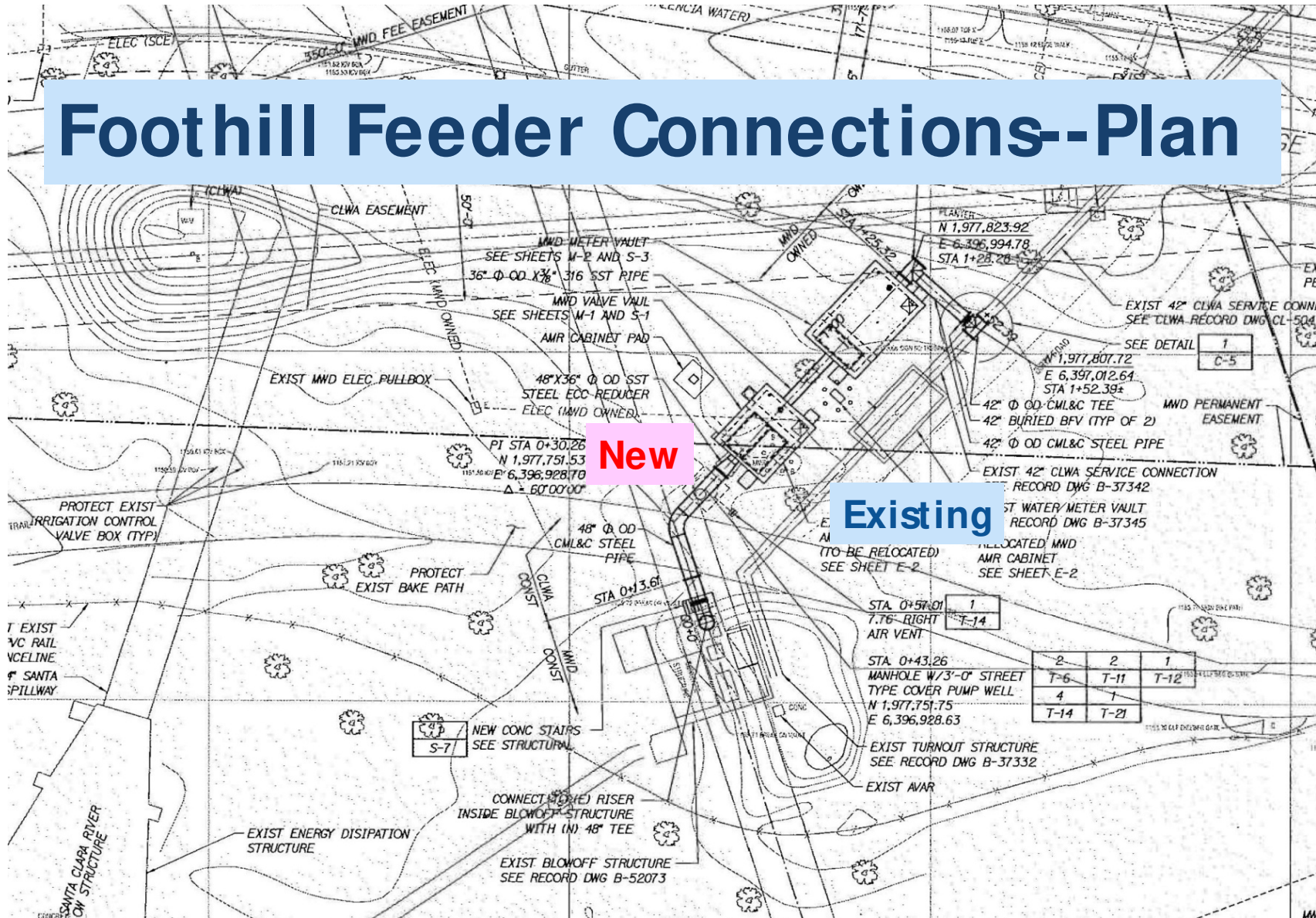
Board of Directors

# Background

- Raw SWP water from Castaic Lake is wheeled to RVIPS and RVWTP via MWDSC's Foothill Feeder pipeline per 1992 Agreement between CLWA and MWDSC
- Since RVWTP start-up in 1996, CLWA has received SWP water through a "temporary" connection with 30 MGD and increased to 60 MGD capacity
- Current RVWTP permitted capacity is 66 MGD
- Permanent connection will allow for up to 90 MGD
- Project will provide additional tie-in from Foothill Feeder to CLWA raw water line
- Existing connection will be left in place as backup or for use during maintenance



# Foothill Feeder Connections-Plan

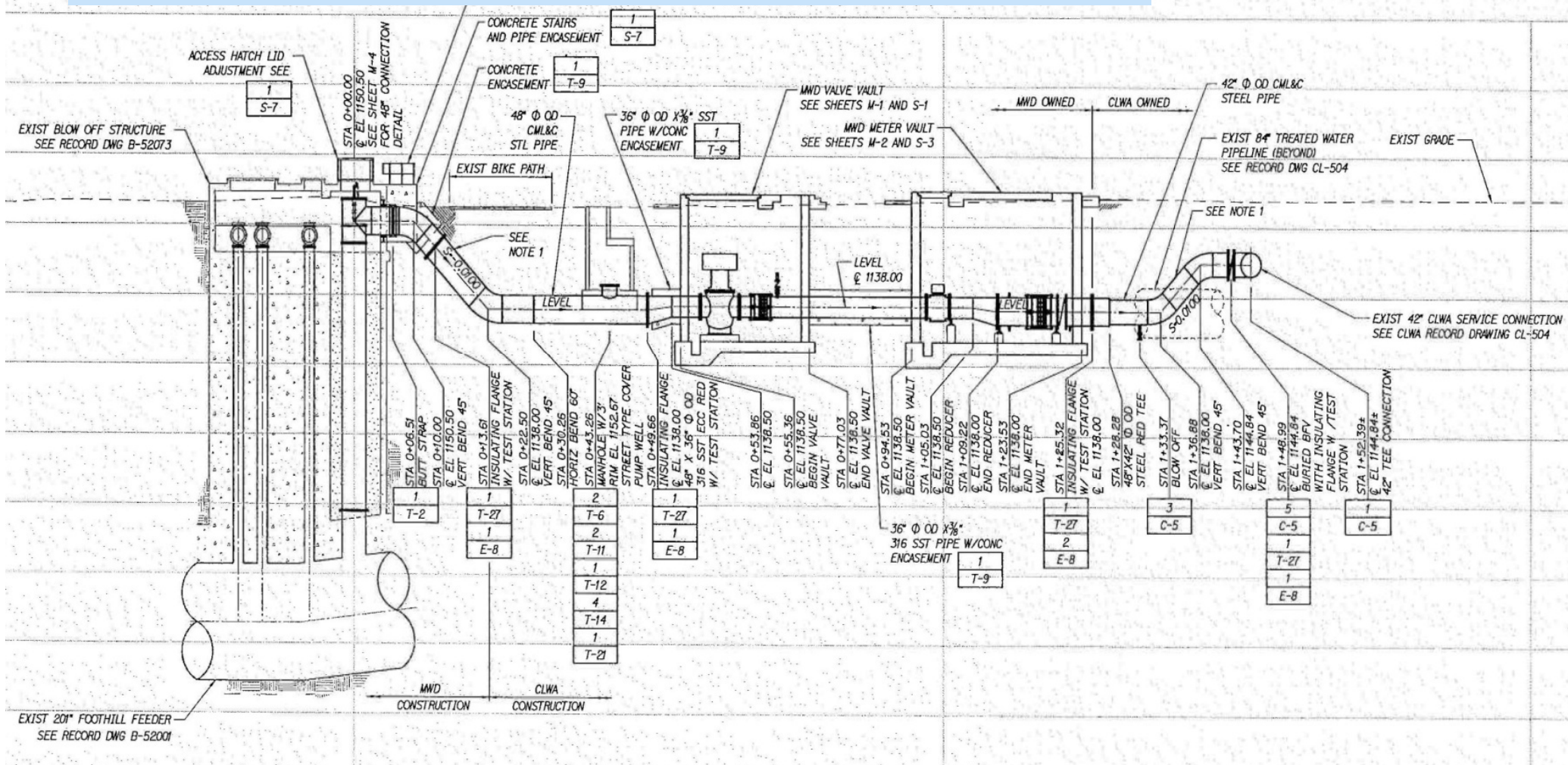


New

Existing

2	2	1
T-6	T-11	T-12
4	1	
T-14	T-21	

# Foothill Feeder Connections-Profile





















3/10/10 9:46:04 PM BC













# Expense Summary

Item	Expenses
Construction Contract	\$3.0 million
Engineering/Construction Management	\$1.1 million
MWDSC Valve Rehabilitation	\$0.4 million
MWDSC Oversight	\$0.9 million
<b>Total</b>	<b>\$5.4 million</b>

# Expense Summary

Item	Expenses
Construction Contract	\$3.0 million
Engineering/Construction Management	\$1.1 million
MWDSC Valve Rehabilitation	\$0.4 million
MWDSC Oversight	\$0.9 million
<b>Total</b>	<b>\$5.4 million</b>
State Prop. 84 Grant	(\$1.5 million)
<b>Net Cost</b>	<b>\$3.9 million</b>



# Questions?