



SCV
WATER

December 7th, 2021

GIS

Geospatial Information Science *or*
Geographic Information Systems

WHAT IS GIS?

GIS Is Changing Everything

How We Abstract Our World

- Data and Data Models
- Models
- Workflows
- Maps and Globes
- Metadata



Digital Geographic Knowledge

How We Reason About the World

- Patterns
- Processes
- Relationships
- Implications



Spatially Integrated Thinking

How We Organize and Communicate

- Collaboration
- Place-Based Approaches
- Integrated Teams



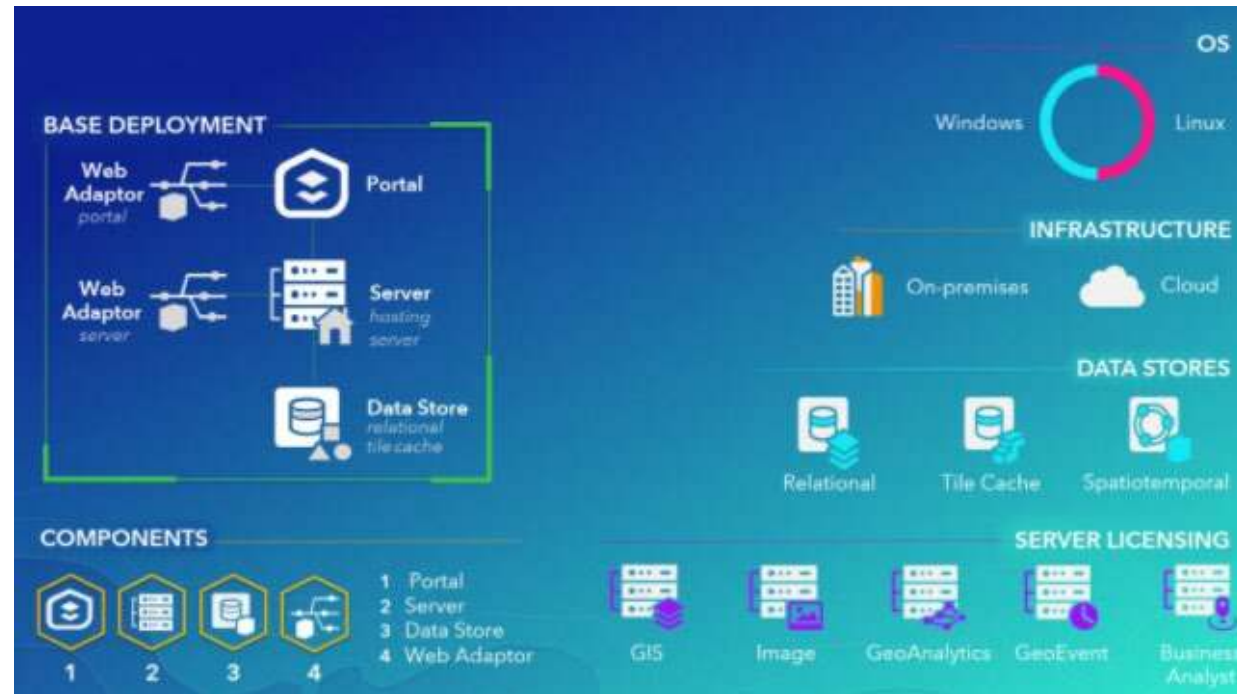
Shared Geographic Knowledge

And How We Act

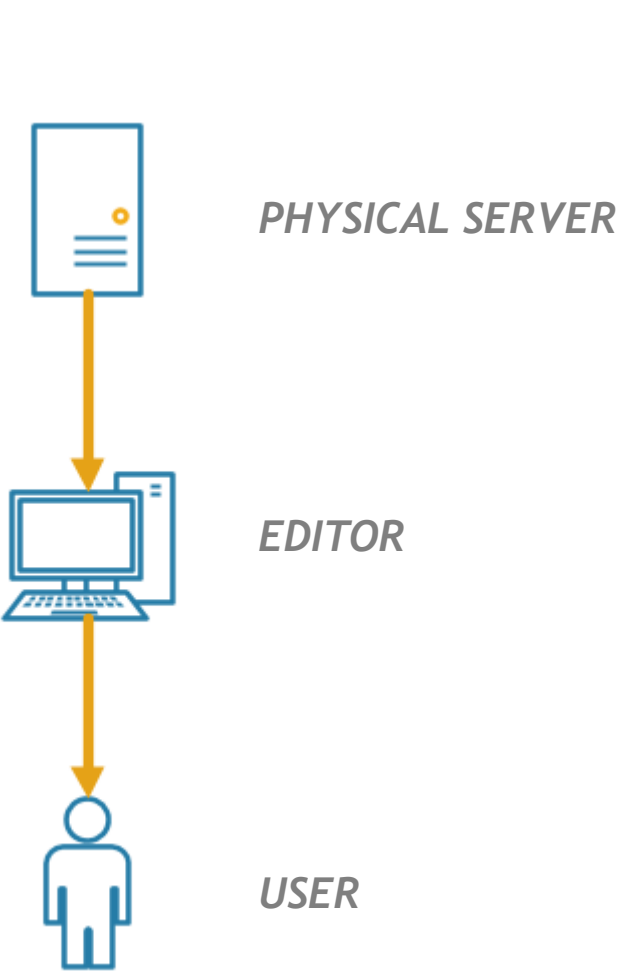


WHAT IS GIS ENTERPRISE?

Is a complete software system developed by Environmental Systems Research Institute (ESRI) for all geospatial needs such as mapping and visualization, analyzing, discovering, processing, and managing spatial data.



WHERE WE WERE

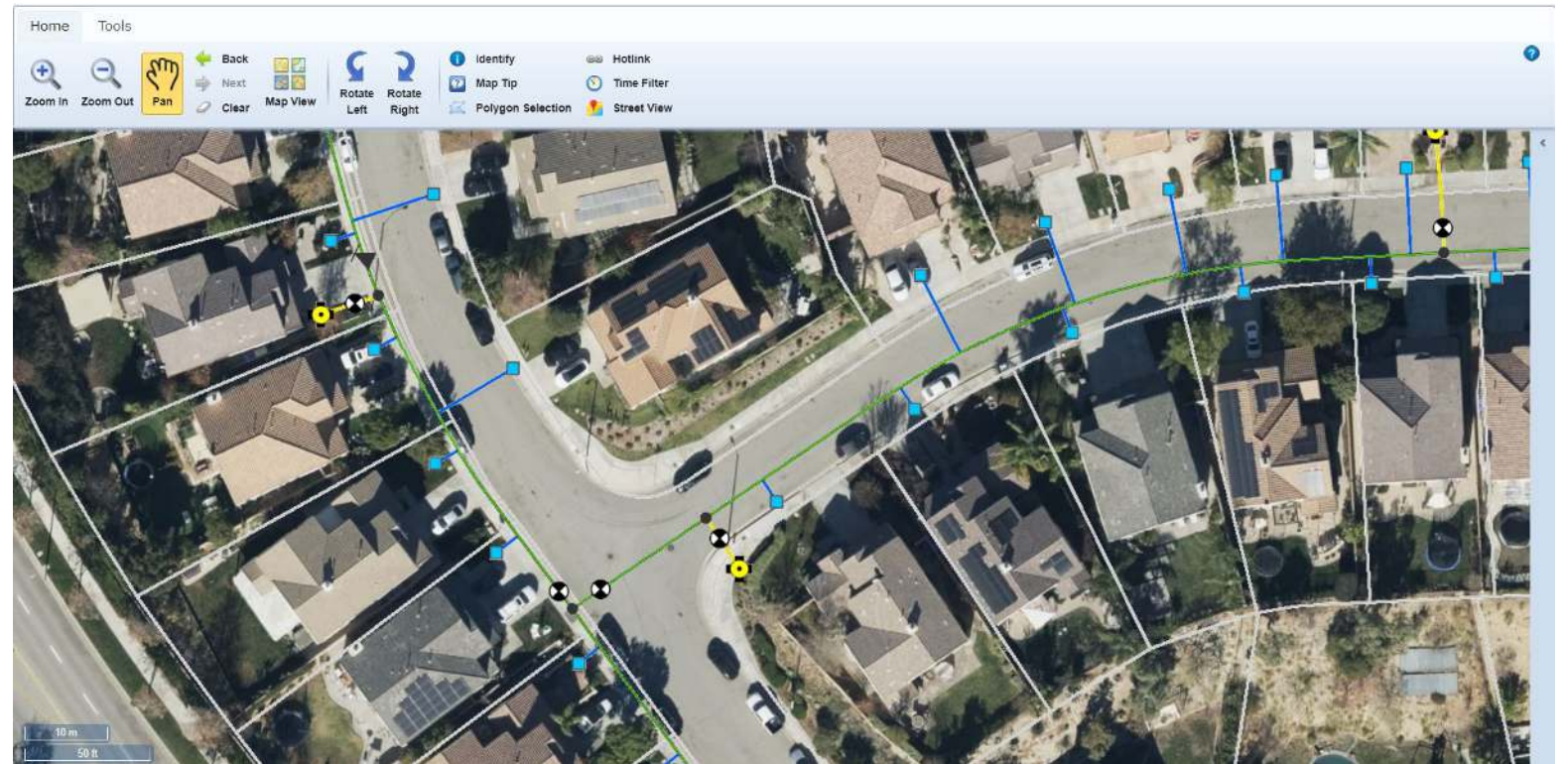


- Castaic Lake Water Agency
- Santa Clarita Water Division
- Newhall County Water
- Valencia Water Company

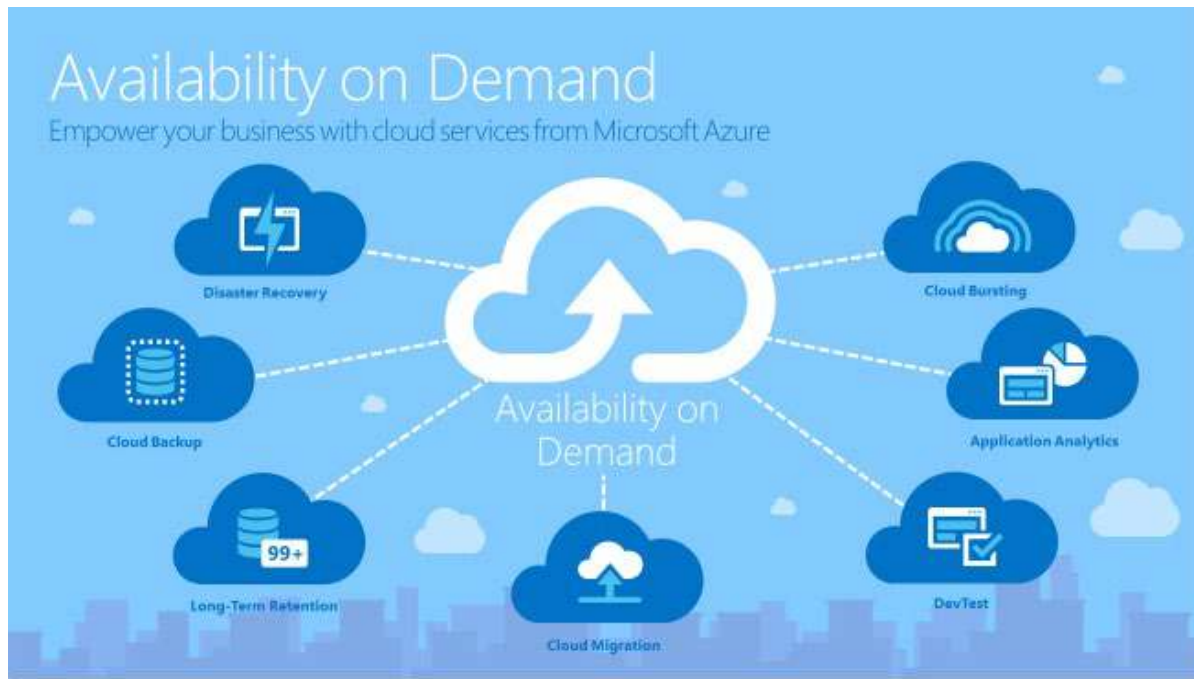
Contractors/Consultants



WHERE WE ARE!



WHERE WE ARE!

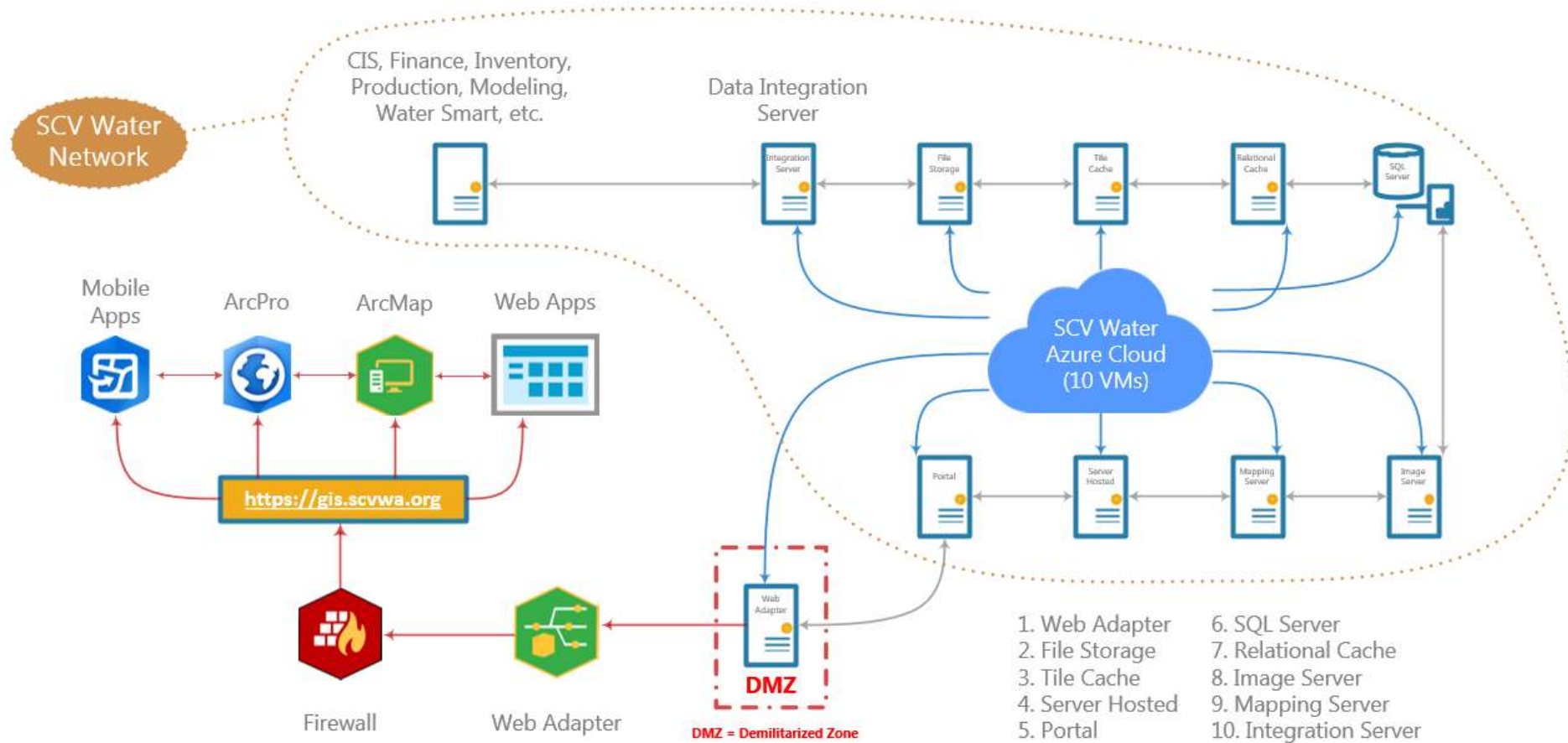


- 10 virtual machine (VM) servers
- VMs hosted inside Microsoft Azure Cloud
- Enterprise URL: <https://gis.scvwa.org>
- Internal Staff Maintained
- Advanced GIS Processing

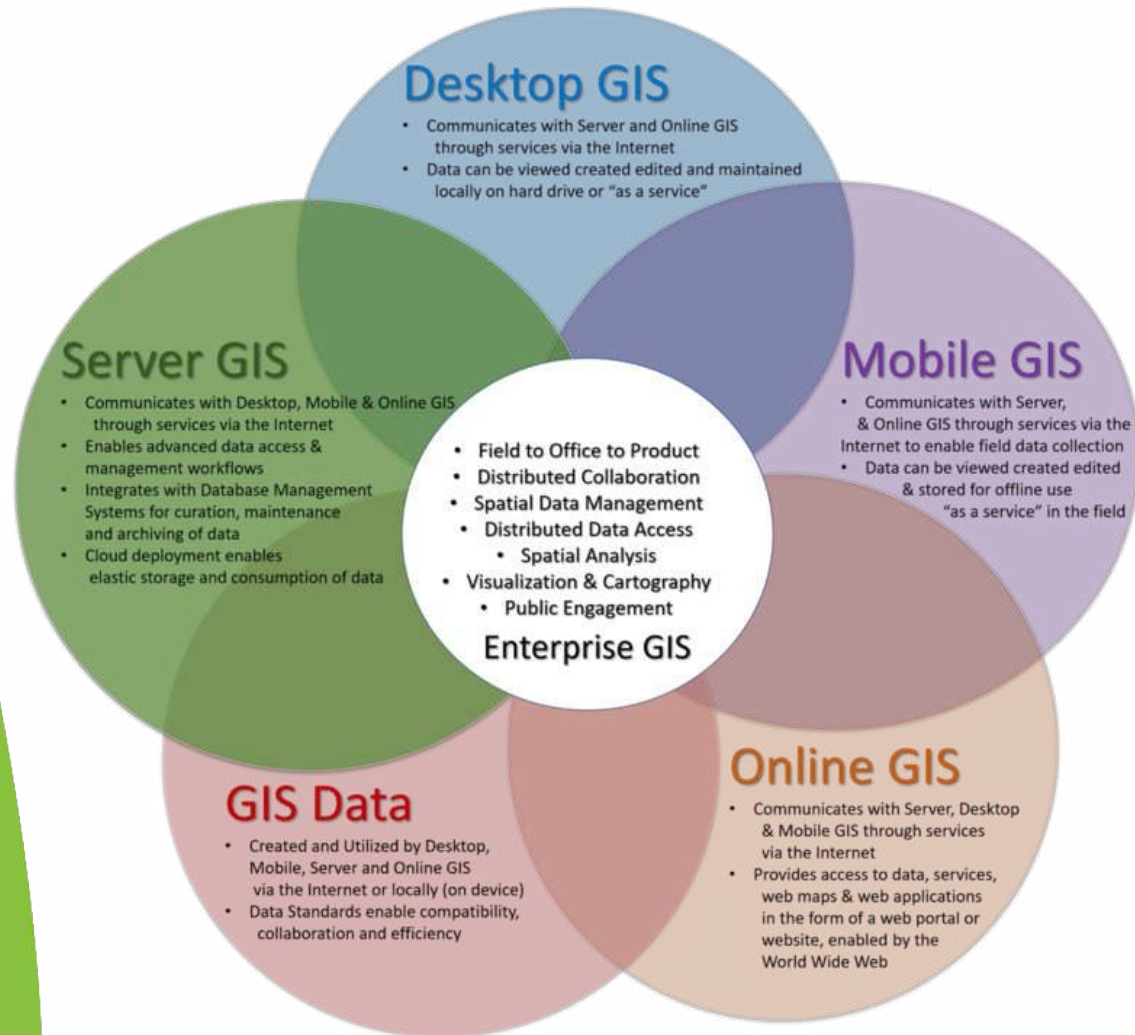


WHERE WE ARE!

SCV Water GIS Enterprise Diagram



BENEFITS OF ENTERPRISE



- Enhanced Security (part of the SCV Water Network)
- Data integration and communication
- System wide management
- Ease of data sharing between field and office via mobile devices
- Reduced Maintenance & Support Costs
- Internal Development & Support
- GPS/Survey record management



THE FUTURE AT SCV WATER

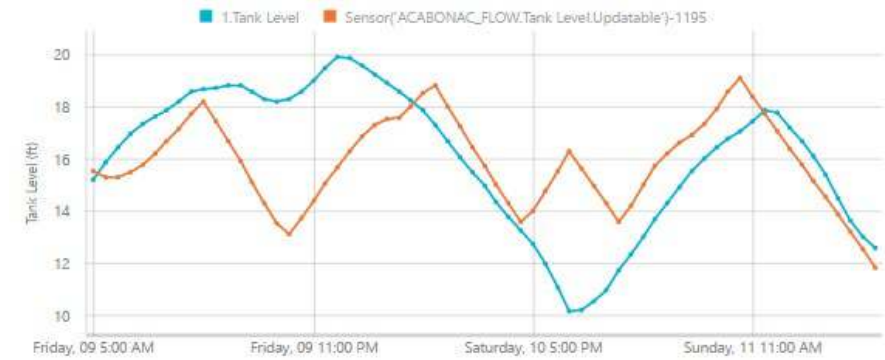
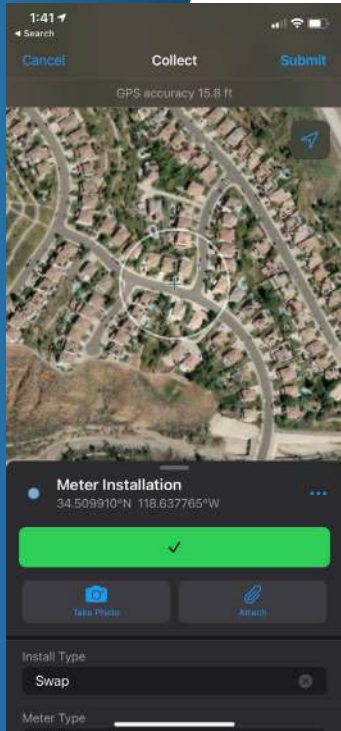


THE FUTURE AT SCV WATER

Apps and Integrations



- Foundation of Asset Management
- Inventory
- Water System Map (field and office)
- Customer Information System
- Hydraulic Modeling
- Asset Planner
- SCADA Reporting
- Remote Sensing
- Survey/Drone Technology
- Water Demand Forecasting
- workflow efficiencies



QUESTIONS?

