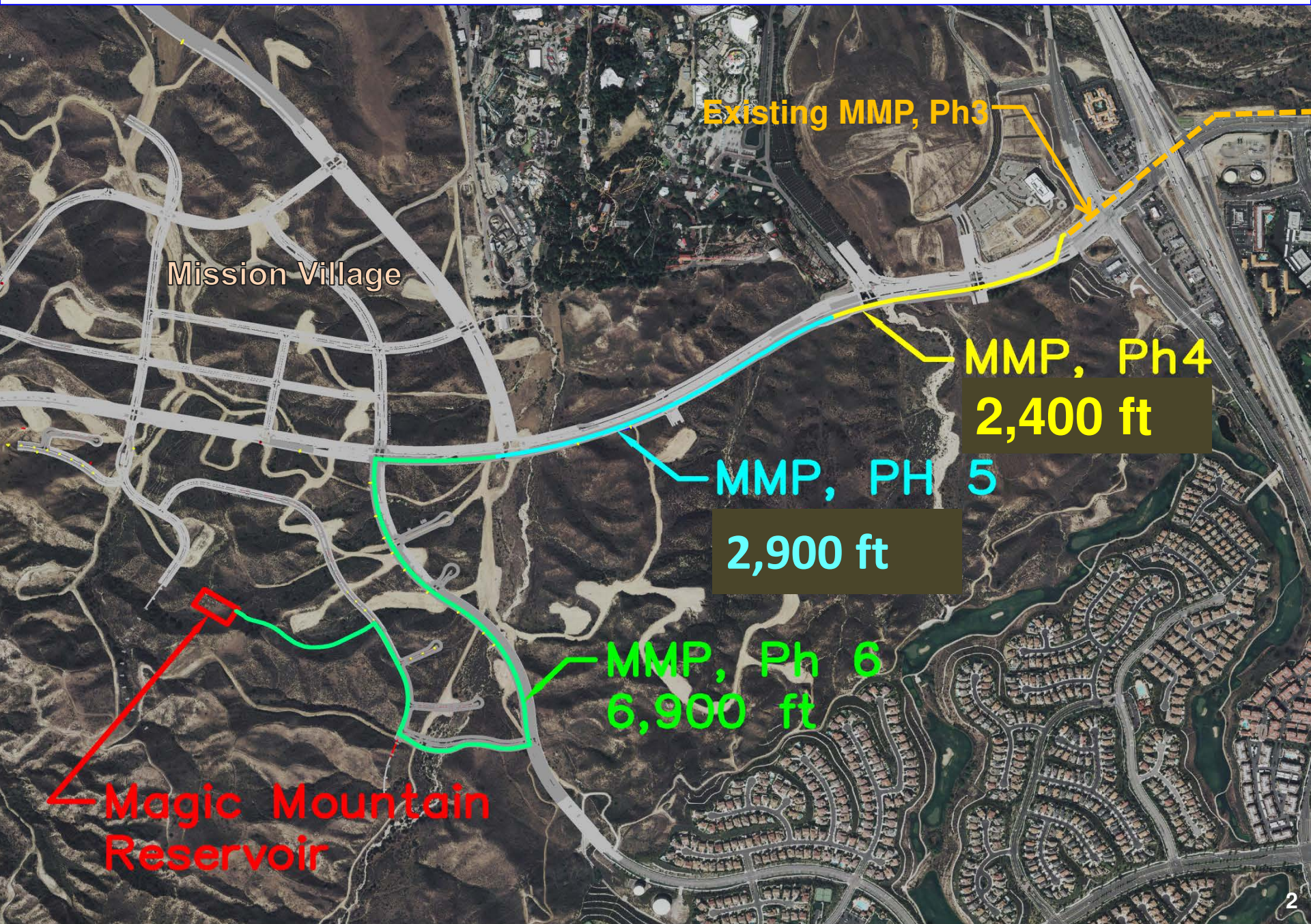




Magic Mountain Pipeline Phase 6 Project

**Engineering and Operations Committee Meeting
October 3, 2018**

Magic Mountain Pipeline (MMP), Phases 4-6



Mission Village

Existing MMP, Ph3

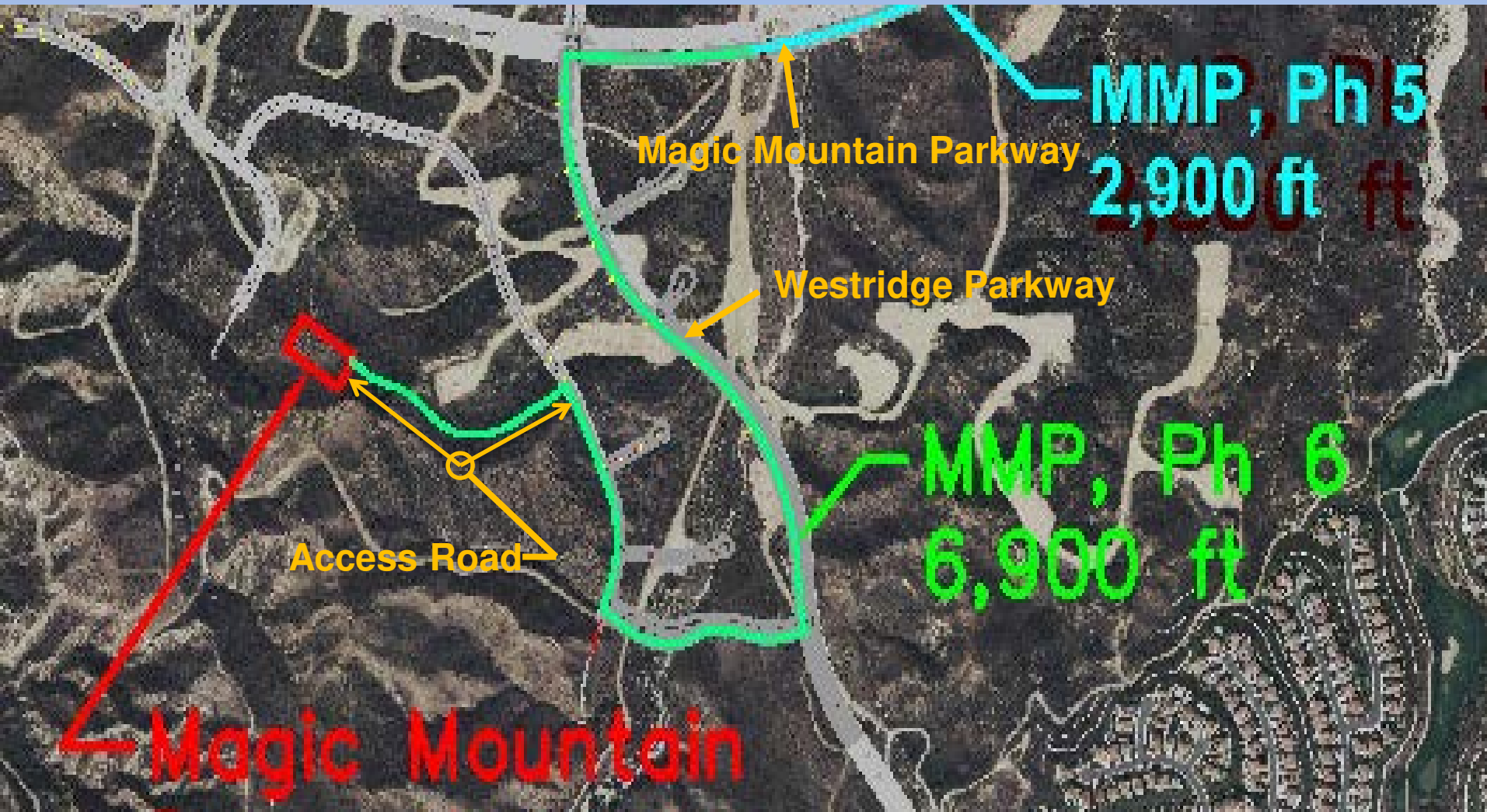
MMP, Ph4
2,400 ft

MMP, PH 5
2,900 ft

MMP, Ph 6
6,900 ft

Magic Mountain
Reservoir

Magic Mountain Pipeline Phase 6 Project



- 42-inch diameter pipeline, approx. 6,900 feet long.
- Pipe appurtenances (valves, air-vacuum valves, pump-outs, etc.)
- Access road

Magic Mountain Pipeline Phase 6

Design Scope of Work

- **Provide overall project management, coordination and administration.**
- **Review various documents (plans, geotechnical report, etc.).**
- **Design the pipeline, pipe appurtenances, and reservoir access road.**
- **Prepare a 30% design pipeline alignment plan.**
- **Prepare plans, technical specifications, and construction cost estimates for 75%, 90% and 100% submittals.**
- **Prepare the Waterworks Standards Main Separation Alternative Request Checklist, as required.**

Magic Mountain Pipeline Phase 6 Budget and Schedule

- **Michael Baker International Design Budget: \$230,000**
 - **Work would be performed on a time and expense basis**

- **Design Schedule: November 2018 to April 2019**

Magic Mountain Pipeline Phase 6 Recommendation

That the Engineering and Operations Committee recommends that the Board of Directors authorize the General Manager to execute a work authorization for a not-to-exceed amount of \$230,00 for Michael Baker International to provide design services for the Magic Mountain Pipeline Phase 6 project.