



# *Status of Sustainable Groundwater Management Act Implementation*

Water Resources and Watershed Committee  
May 13, 2020  
Item 5.1

# Overview

- Drivers for adjustments
  - Experience to date
  - Round 3 Grant
- Scope
- Schedule
- Budget
- Status of Key Implementation Items

# Scope

- Scope changes to provide additional consultant support for GSP development have been made.
  - Additional consultant hours for meetings, primarily related to Stakeholder Advisory Committee
  - Slight increase in the Groundwater Flowmodel Peer Review budget
  - Data loggers for temperature and water level
  - Incorporation of ongoing Infiltration Testing and Pilot Study work

# Schedule

- Concerns with implementing field work plan due to property access and permitting delays.
  - Delays continue now in part due to Safe at Home actions.
  - Delays ability to obtain new data for inclusion in GSP.

# Budget

- May 12, 2020 SCV GSA Board of Directors adopted the proposed FY 20/21 budget.
  - Staff support costs reduced and additional consultant costs added
    - Net change is reduction of ~\$206K
  - Round 3 grant allowing for up to \$891K reimbursement now included in the budget
  - These two changes reduce the Additional Revenue Required value by \$1.098M.



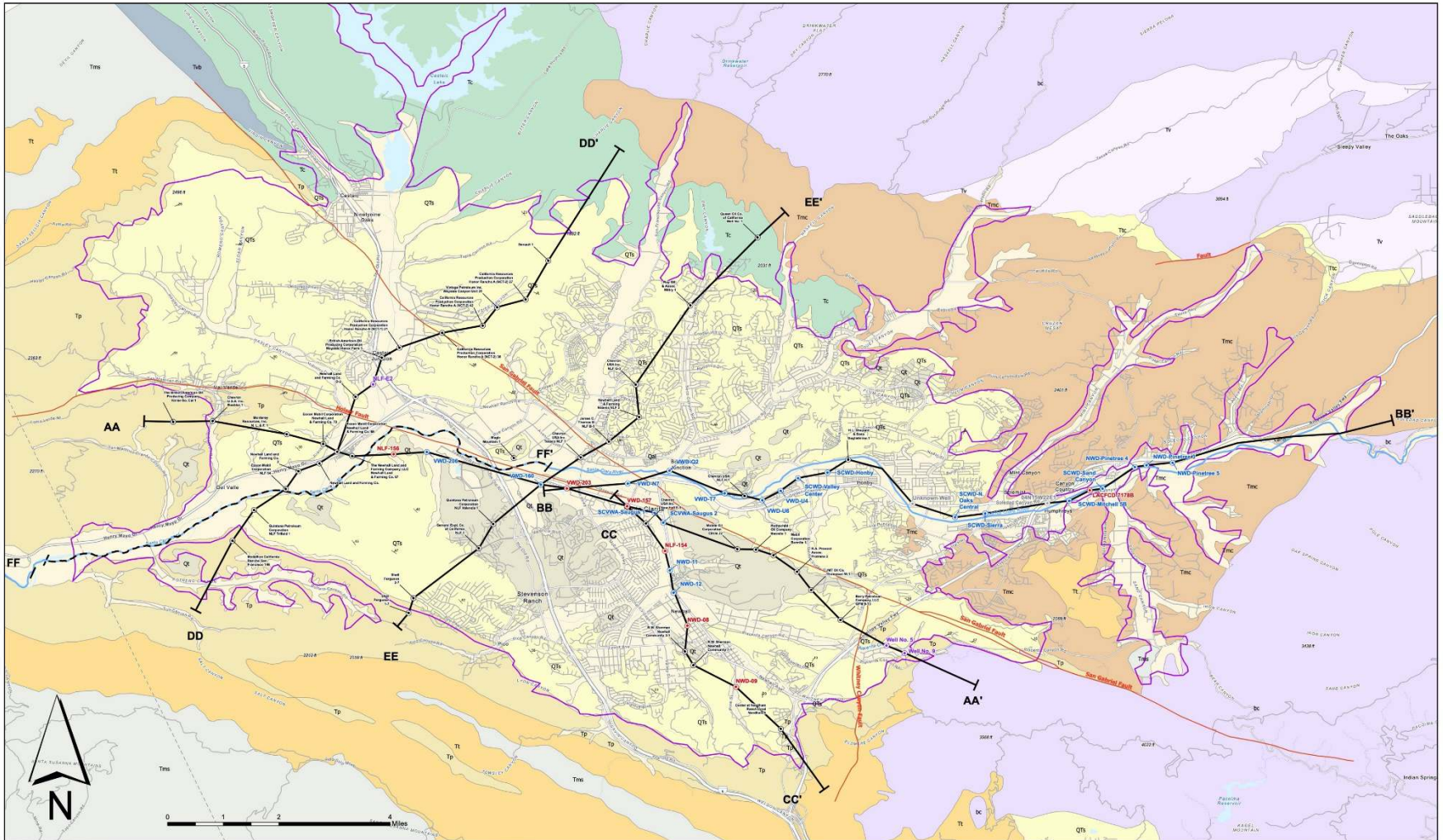
# Budget (cont.)

- New indication that the GSP Technical Consultant's budget for project management will need to be increased.
  - Efforts higher than anticipated
    - Weekly calls with consultants
    - Covid-19 induced workflow inefficiencies with
      - Sub consultant management
      - Property access (private and public owners)
- Staff will determine financial need and brief SCV-GSA at its regular Board meeting in July

# Status of Key Implementation Actions

- RFP released next week for GW Flowmodel Peer Review
- May 12, 2020 Special SCV GSA meeting
- May 29, 2020 SAC meeting
  - Review/comment on draft technical memos on the Draft Hydrogeologic Conceptual Model
  - Review/comment on draft content for mid-June workshop
- Mid – June 2020 Workshop on Hydrogeological Conceptual Model
- Regular July 6, 2020 SCV GSA Board meeting

# Draft HCM Illustrations



## LEGEND

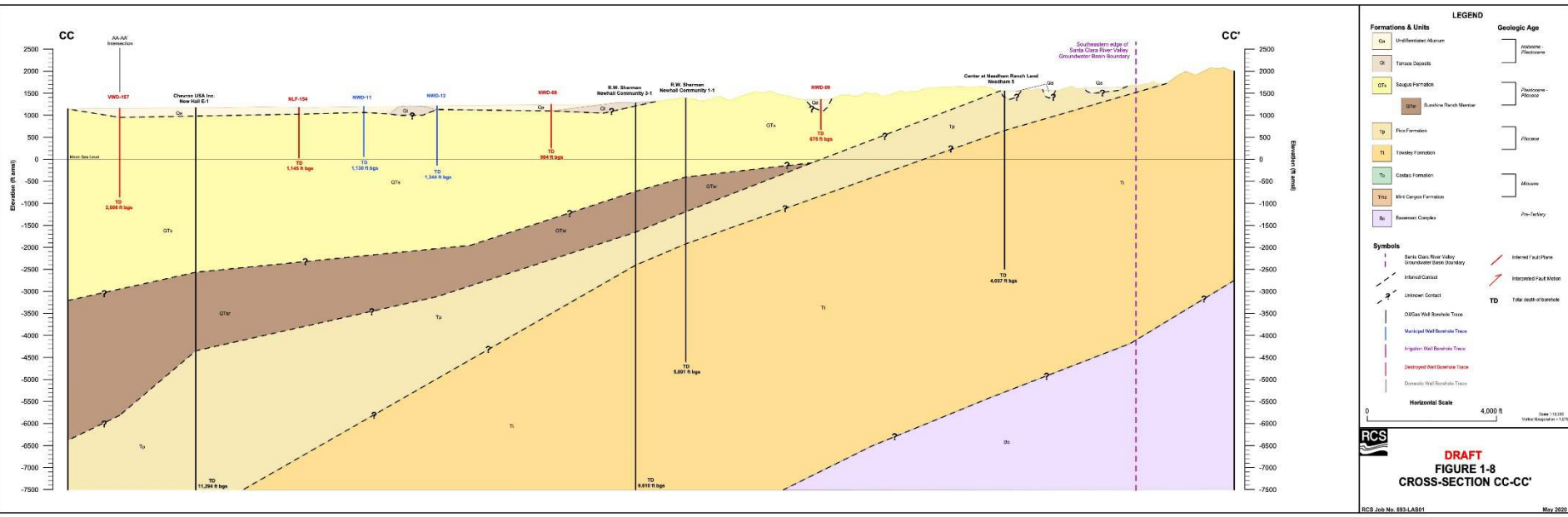
- |  |  |  |   |   |
|--|--|--|---|---|
| <ul style="list-style-type: none"> <li> Santa Clara River Valley Groundwater Basin Boundary (DWR)</li> <li> Santa Clara River</li> </ul> | <p><b>Cross Section Trace</b></p> <ul style="list-style-type: none"> <li> Selected</li> <li> Proposed</li> </ul> | <p><b>Formations</b></p> <ul style="list-style-type: none"> <li> Undifferentiated Alluvium (Qa)</li> <li> Tertiary Deposits (Qd)</li> <li> Salinas Formation (Qts)</li> <li> Pico Formation (Tp)</li> <li> Towsley Formation (Tt)</li> <li> Contact Formation (Tc)</li> <li> Madera Formation (Tmc)</li> <li> Viso Breccia (Tvb)</li> <li> Mini Canyon Formation (Tmc)</li> <li> Tule Canyon Formation (Ttc)</li> <li> Vasquez Formation (Tv)</li> <li> Basement Complex (Bc)</li> </ul> | <p><b>Fault</b></p> <ul style="list-style-type: none"> <li> Fault Trace (Simplified)</li> <li> Slicking Plane Orientation with Dip</li> </ul> | <p><b>Well Type</b></p> <ul style="list-style-type: none"> <li> Domestic Well</li> <li> Municipal Well</li> <li> Irrigation Well</li> <li> Domestic Well</li> <li> Oil/Gas Well</li> <li> Destroyed Well</li> </ul> |
|--|--|--|---|---|



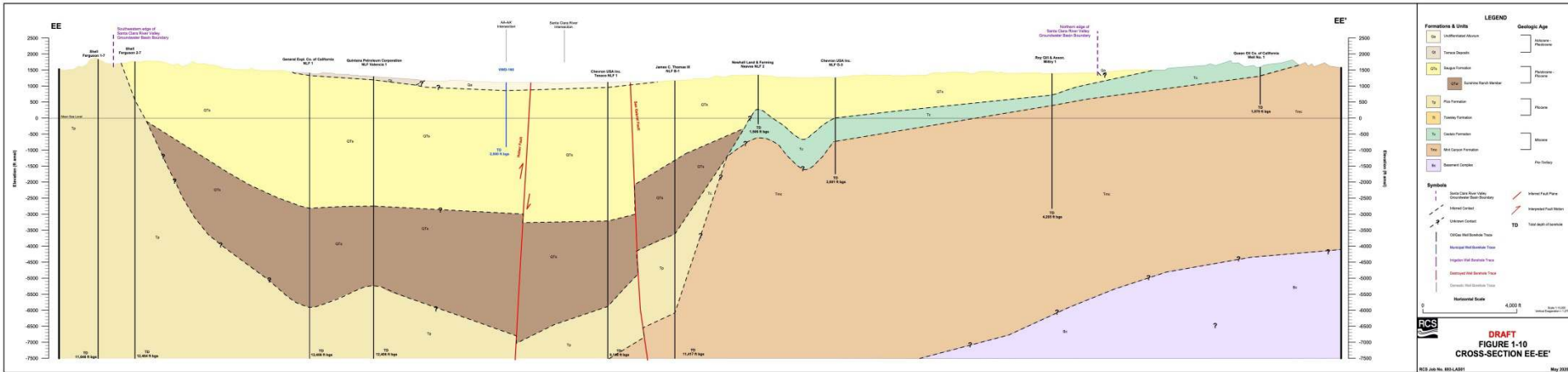
**DRAFT**  
**FIGURE 1-4**  
**GEOLOGIC MAP SHOWING CROSS-SECTIONS**



# Draft HCM Illustrations



# Draft HCM Illustrations



Questions?