



**SCV**  
**WATER**



**SCV WATER AGENCY  
TELECONFERENCE  
WATER RESOURCES AND WATERSHED  
COMMITTEE MEETING**

**WEDNESDAY, FEBRUARY 9, 2022**

**START TIME: 5:30 PM (PST)**

Join the Board meeting from your  
computer, tablet or smartphone:  
<https://scvwa.zoomgov.com/j/1602355257>

Listen in Toll Free by Phone  
-OR- +1-(833)-568-8864  
Webinar ID: 160 235 5257

**To participate in public comment from your computer, tablet, or smartphone:**

When the Chair announces the agenda item you wish to speak on, click the “**raise hand**” feature in **Zoom**\*. You will be notified when it is your turn to speak.

**To participate in public comment via phone:**

When the Chair announces the agenda item you wish to speak on, **dial \*9 to raise your hand**. Phone participants will be called on by the **LAST TWO digits** of their phone number. **When it is your turn to speak, dial \*6 to unmute**. When you are finished with your public comment dial **\*6 to mute**.

Can't attend? If you wish to still have your comments/concerns addressed by the Committee, all written public comments can be submitted by 4:00 PM the day of the meeting by either e-mail or mail.\*\* Please send all written comments to Cheryl Fowler. Refer to the Committee Agenda for more information.

\*For more information on how to use Zoom go to [support.zoom.us](https://support.zoom.us) or for “raise hand” feature instructions, visit <https://support.zoom.us/hc/en-us/articles/205566129-Raise-Hand-In-Webinar>

\*\*All written comments received after 4:00 PM the day of the meeting will be posted to [yourscvwater.com](https://www.yourscvwater.com) the next day. Public comments can also be heard the night of the meeting.


**Please Note** Pursuant to the provisions of AB 361 this meeting is being held remotely. The SCV Water Board will continue to hold remote Board and Committee meetings due to the continuing State of Emergency for COVID-19 and state and local official's continuance to impose or recommend measures to promote social distancing. The public may not attend meetings in person. The public may use the above methods to attend and participate in the public Committee meetings.

[This page intentionally left blank.]



**Date:** February 2, 2022

**To:** **Water Resources and Watershed Committee**  
Jeff Ford, Chair  
B.J. Atkins  
Edward Colley  
William Cooper  
E.G. "Jerry" Gladbach

**From:** Steve Cole, Assistant General Manager 

The **Water Resources and Watershed Committee** is scheduled to meet via teleconference on **February 9, 2022 at 5:30 PM**, call-in information is listed below.

**TELECONFERENCE ONLY  
NO PHYSICAL LOCATION FOR MEETING**

**TELECONFERENCING NOTICE**

Pursuant to the provisions of AB 361 this meeting is being held remotely. The SCV Water Board will continue to hold remote Board and Committee meetings due to the continuing State of Emergency for COVID-19 and state and local official's continuance to impose or recommend measures to promote social distancing. Any Director may call into the Agency Committee meeting using the **Agency's Call-In Number 1-(833)-568-8864 Webinar ID: 160 235 5257 or Zoom Webinar by clicking on the link <https://scvwa.zoomgov.com/j/1602355257>** without otherwise complying with the Brown Act's teleconferencing requirements.

The public may not attend the meeting in person. Any member of the public may listen to the meeting or make comments to the Committee using the call-in number or Zoom Webinar link above. Please see the notice below if you have a disability and require an accommodation in order to participate in the meeting.

**If the State of Emergency for COVID-19 expires prior to this meeting and after the posting of this Agenda, this meeting will be held in person at the Santa Clarita Valley Water Agency, 27234 Bouquet Canyon Road, Santa Clarita, CA 91350 in the Board and Training Room.**

We request that the public submit any comments in writing if practicable, which can be sent to [cfowler@scvwa.org](mailto:cfowler@scvwa.org) or mailed to Cheryl Fowler, Management Analyst II, Santa Clarita Valley Water Agency, 26501 Summit Circle, Santa Clarita, CA 91350. All written comments received before 4:00 PM the day of the meeting will be distributed to the Committee members and posted on the Santa Clarita Valley Water Agency website prior to the start of the meeting. Anything received after 4:00 PM the day of the meeting will be made available at the meeting and will be posted on the SCV Water website the following day.

**MEETING AGENDA**

<b><u>ITEM</u></b>		<b><u>PAGE</u></b>
1.	<b><u>PLEDGE OF ALLEGIANCE</u></b>	
2.	<b><u>PUBLIC COMMENTS</u></b> – Members of the public may comment as to items within the subject matter jurisdiction of the Agency that are not on the Agenda at this time. Members of the public wishing to comment on items covered in this Agenda may do so at the time each item is considered. (Comments may, at the discretion of the Committee Chair, be limited to three minutes for each speaker.)	
3.	Water Resources Director’s Report	
	3.1 Status of Water Supplies	
* 3.2	Devil’s Den Semi-Annual Report	3
	3.3 Staff Activities	
4.	Sustainability Manager’s Report	
* 4.1	Update on Conservation Activities & Performance	5
	4.2 Status of Drought Response and Performance	
5. *	Committee Planning Calendar	21
6.	Adjournment	

\* Indicates Attachment  
◆ Indicates Handout

**NOTICES:**

Any person may make a request for a disability-related modification or accommodation needed for that person to be able to participate in the public meeting by telephoning Cheryl Fowler, Management Analyst II, at (661) 297-1600, or in writing to Santa Clarita Valley Water Agency at 26501 Summit Circle, Santa Clarita, CA 91350. Requests must specify the nature of the disability and the type of accommodation requested. A telephone number or other contact information should be included so that Agency staff may discuss appropriate arrangements. Persons requesting a disability-related accommodation should make the request with adequate time before the meeting for the Agency to provide the requested accommodation.

Pursuant to Government Code Section 54957.5, non-exempt public records that relate to open session agenda items and are distributed to a majority of the Committee less than seventy-two (72) hours prior to the meeting will be available for public inspection at the Santa Clarita Valley Water Agency, located at 27234 Bouquet Canyon Road, Santa Clarita, CA 91350, during regular business hours. When practical, these public records will also be made available on the Agency’s Internet Website, accessible at <http://www.yourscvwater.com>.

Posted on February 2, 2022.

MBS



# COMMITTEE MEMORANDUM

**DATE:** January 25, 2022

**TO:** Water Resources and Watershed Committee

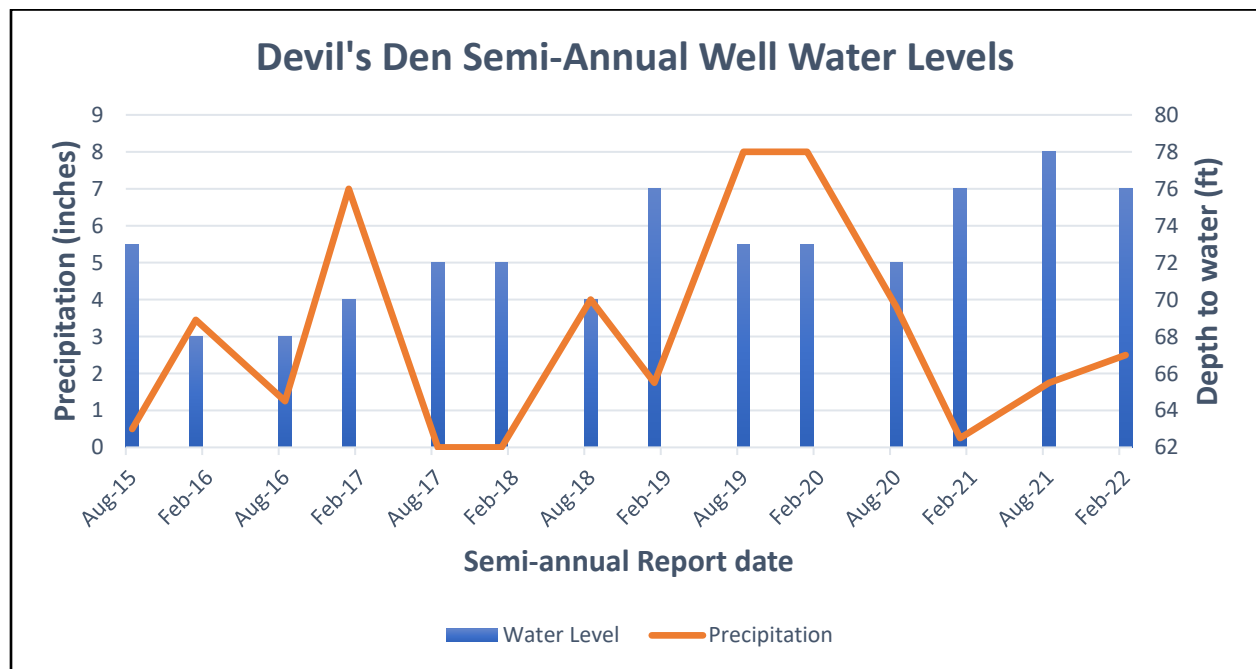
**FROM:** Dirk Marks *DM*  
Director of Water Resources

**SUBJECT:** Devil's Den Semi-Annual Report (July 2021-December 2021)

## SUMMARY AND DISCUSSION

SCV Water’s Devil’s Den property encompasses 8,656 acres in Kern and Kings Counties. The Devil’s Den Water District is an existing entity, although its State Water Project (SWP) contract rights of 12,700 Acre-Feet (AF) have been transferred to SCV Water. A summary of activities at the Devil’s Den property during the last six months of 2021 is as follows:

1. Groundwater levels are checked bi-annually at the north end of the property to monitor the potential effects of groundwater pumping by neighboring agriculture operations. Current water levels are approximately 76 feet below ground surface elevation. This reflects an increase of 2 feet in the test wells water level over the last six months. Typical static water levels are approximately 70 feet.



2. A cattle herd of 500 cows and calves were grazing various sections of the property providing weed control.
3. The agricultural lease between Rolling Hills Farms (RHF) and SCVWA was extended for a period of 5 years to conclude on December 31, 2026.
4. Rolling Hills Farms continues mechanical weed control in areas of the property where cattle are not being grazed, such as fence lines and roadsides. RHF is also tasked with mechanical weed control of any future solar facilities, if necessary. RHF did not have to mechanically remove any weeds from any solar site in the last 6 months.
5. The property received approximately 2 1/2" of rain between August 2021 and December 31, 2021.
6. Alamo Springs, LLC (Alamo) has sent termination letters for their Site Control and Reimbursement and Funding Agreements. Alamo was unable to complete there IS/MND and had been removed from the Intertie Connection queue and thusly did not meet the Agreement's conditions.
7. Staff is currently working on the final access easement language and cost with Recurrent Energy to allow Recurrent to permanently cross property owned by SCV Water to access their new solar facility on adjacent land.
8. SCV Water continues discussions with 8MinuteEnergy, a solar generation company, regarding the leasing of SCV Water Kern and Kings County properties for the purposes of installing a solar generation farm. 8MinuteEnergy expressed interest in leasing up to 2,200 acres and has provided SCV Water with a Letter of Intent for an option-lease of real properties within the Devil's Den Water District, as well as additional SCV Water owned properties outside of the DDWD boundary.

RGV

MGS



# COMMITTEE MEMORANDUM

**DATE:** January 31, 2022

**TO:** Water Resources and Watershed Committee

**FROM:** Matthew S. Dickens, MPA *MSD*  
Sustainability Manager

**SUBJECT:** Update on Conservation Activities and Performance

## SUMMARY AND DISCUSSION

### Status of Conservation Projects

#### Lawn Replacement Program

At its regularly scheduled October 5, 2021 meeting, the SCV Water Board of Directors approved updates to the Lawn Replacement Program. The approved updates included increases in incentive values, participation flexibility, and sustainable landscape features. Though the incentives and practices were available to customers following the Board's approval, conservation staff planned to formally launch the program in Spring 2022. The scheduled 2022 launch provides time for staff to prepare new workflows, processes, procedures, support materials, and training critical to mission success (outlined in Figure 1).

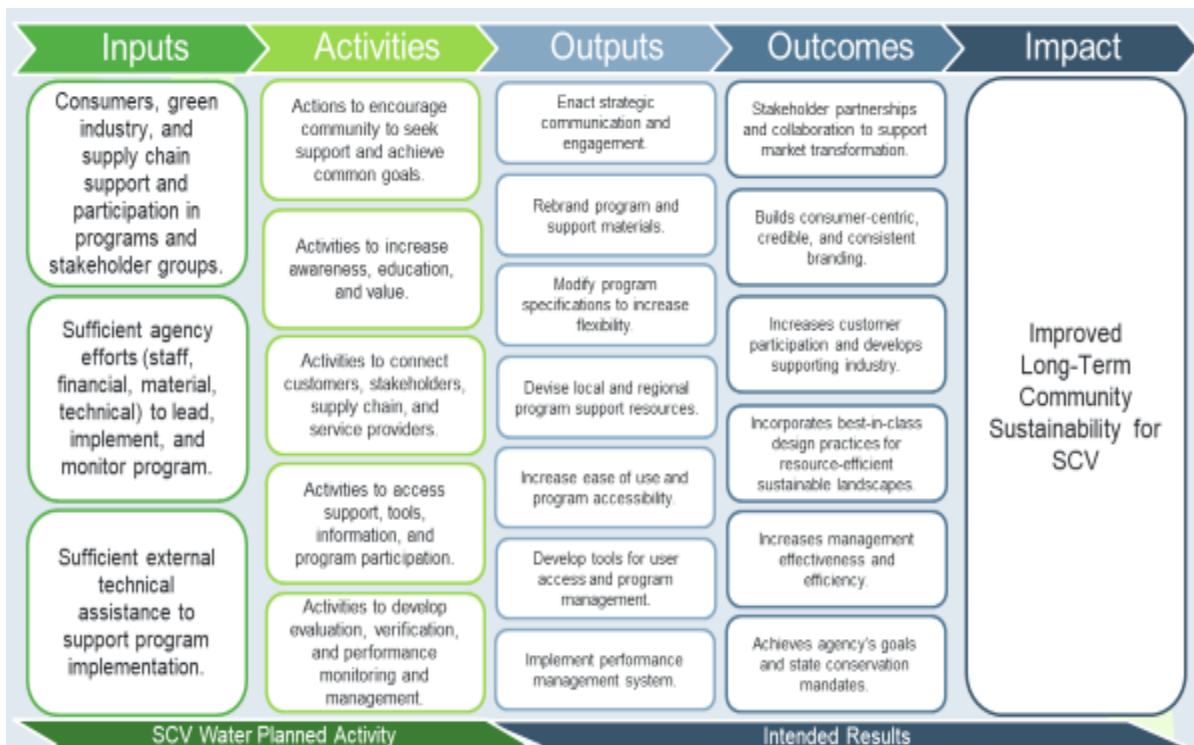


Figure 1- SCV Water - Sustainable Landscape Programs - Logic Model



Currently, staff is working on action items in support of those listed in the Inputs and Activities sections of the logic model. In January 2022, staff launched the Supply Chain taskforce/advisory group development process which will include two unique teams; 1. Nurseries and Landscape Designers, and 2. Irrigation Supply, Manufacturers, and Landscape contractors. The taskforces will work with SCV Water and its consultant to develop and coordinate critical supply chain processes and practices. Staff is finalizing online tools to include the new program parameters, estimated rebate calculators, and tools to both support and enhance the overall user experience. Additionally, staff has developed a suite of resource guides (attached) to provide an overview of various rebate incentives and supplemental smart practices. In February 2022, staff will conclude testing of the updated online customer engagement portal and launch additional efforts engagement and communication efforts.

Water Loss Audit & Validation

In 2015, the California Legislature adopted SB 555 to require each urban retail water supplier to develop and submit to the Department of Resources a completed and validated water loss audit report for the previous fiscal or calendar year. In December 2021, SCV Water submitted its 4<sup>th</sup> annual water loss audit report for each of its retail units (Newhall, Santa Clarita, and Valencia). Water loss audit and validation report findings for the current and previous years are listed in Figure 2. While the findings suggest consistent levels of water loss, Santa Clarita’s calculated

Division	Newhall				Santa Clarita				Valencia			
Year	2017	2018	2019	2020	2017	2018	2019	2020	2017	2018	2019	2020
Year Type	FY	FY	FY	FY	FY	FY	FY	FY	CY	CY	FY	FY
Data Validity Score	65	58	54	60	68	64	64	63	65	58	65	56
Industry Leakage Index (ILI)	1.42	1.88	1.32	1.34	2.39	1.37	2.92	3.47	.43	1.78	1.99	1.65
Real Loss (Gal./Conn./Day)	33.48	44.4	30.84	29.80	48.53	29.31	65	76.34	9.78	37.17	43.84	36.0
Apparent Loss (Gal./Conn./Day)	13.49	24.29	21.42	15.70	15.79	17.62	16.3	17.65	6.7	6.58	7.3	7.83
NRW % of Operating System	2.5%	4.4%	4.6%	3.5%	6.9%	4.4%	4.9%	10.6%	1.5%	4.9%	2.5%	5.8%

Figure 2- SCV Water - Water Loss Audit and Validation Reports (FY 2017-20200)

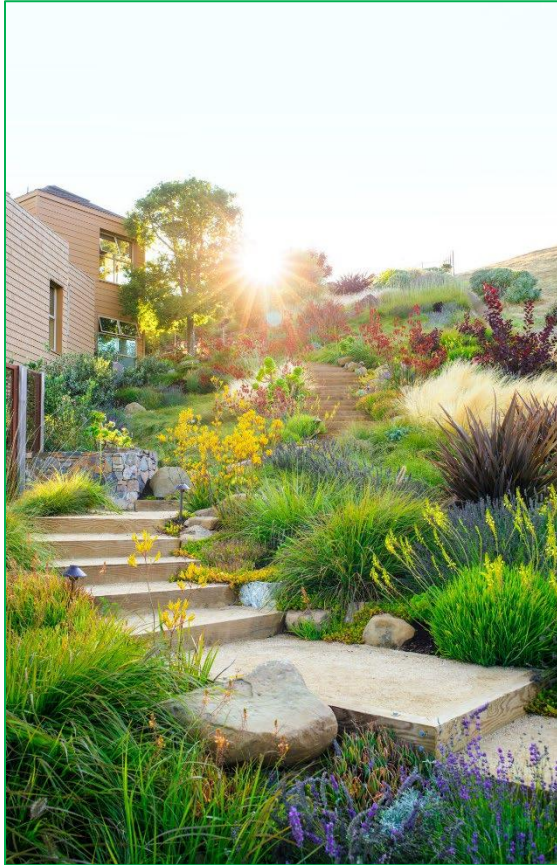
real losses have increased by 17%. In addition to the increased calculated water loss, the water loss validity scores have steadily decreased since the implementation of SB 555. In February 2022, staff plans to meet with the Agency’s water loss consultant to further assess legacy and recent audit findings and to determine next steps critical to reducing water loss and to improving data validity scores.

Attachment

MGS



# Native Plant Bonus Incentive



## INCENTIVE & REQUIREMENTS

**Residential:** \$0.50 per SF up to 2,500 SF

**Large Landscape/Commercial:** \$0.25 per SF up to 2,500 SF

### Requirements:

- ❖ Plants must be native to California.
- ❖ At least 25% of the total project area must be native plants.
- ❖ Project must comply with the Lawn Replacement Program (LRP) Terms and Conditions.

## BACKGROUND

As part of SCV Water's updated Lawn Replacement Program (LRP), the Agency is offering a bonus incentive of \$0.50 per square foot to customers that use native plants for at least 50% of their planting coverage area requirement. California is a biodiversity hotspot, with nearly 6,000 species of native plants, meaning they evolved and occur naturally in the region. Because they are adapted to the local climate and soil conditions, native plants require less fertilizers, pesticides, and require less water than many non-native plants, and once established, generally require less maintenance than turf grass. Native plants provide habitat and promote local biodiversity, and each patch of native plant habitat becomes part of a shared effort to nurture and sustain our living landscapes for native wildlife and pollinators.

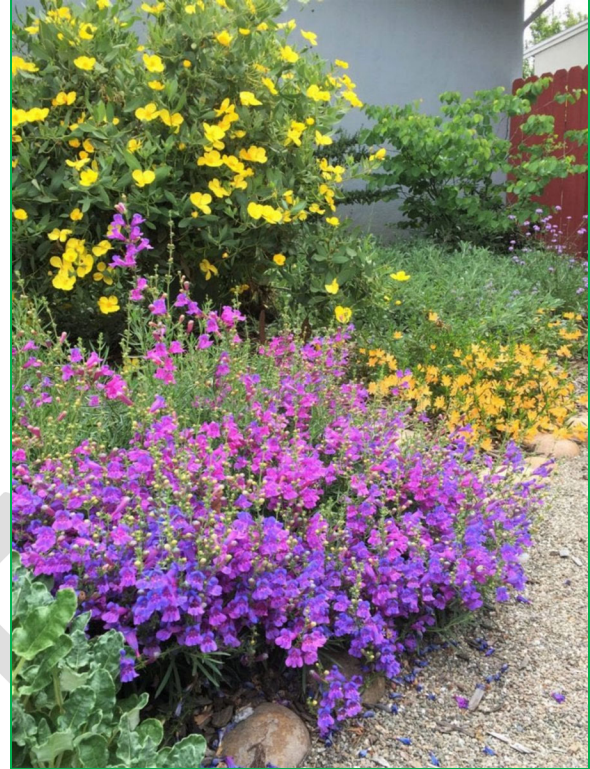




## SMART PRACTICES

SCV Water recommends the following SMART practices to increase the likelihood of success and longevity of a new landscape using native plants:

- ❖ Use SCV Native plants that are adapted to local climate conditions and support native pollinators and wildlife.
- ❖ Sheet mulching is recommended to provide nutrients to the soil (SCV Water also offers this incentive as part of a Pilot Program. See the Sheet Mulching tab for more details).
- ❖ Some native plants prefer overhead spray to drip irrigation. If using overhead spray, proper pressure regulation and smart controller calibration are required.
- ❖ New plantings may have an establishment period of up to 1 year where they will require more water than a mature, established plant. It is recommended to cut back on watering after the second season.
- ❖ Do not overwater native plants. Overwatered plants will become large, bushy, and may become reliant on more water due to increased root depth.



## RESOURCES

California Native Plant Society – Calscape  
SCV Native Plants:

[https://calscape.org/search/?customsearch=1&usr\\_loc\\_name=santa+clarita&drought=Extremely+Low%7CVery+Low%7CLow&ease\\_of\\_growing=Very+Easy%7CModerately+Easy&ease\\_of\\_finding=Commonly+Available&max\\_height=%7C%7Cfeet](https://calscape.org/search/?customsearch=1&usr_loc_name=santa+clarita&drought=Extremely+Low%7CVery+Low%7CLow&ease_of_growing=Very+Easy%7CModerately+Easy&ease_of_finding=Commonly+Available&max_height=%7C%7Cfeet)

Theodore Payne Foundation – Native Plant Library:

[https://theodorepayne.org/nativeplantdatabase/index.php?title=Main\\_Page](https://theodorepayne.org/nativeplantdatabase/index.php?title=Main_Page)

Theodore Payne Foundation – Establishment Period Guide:

[https://theodorepayne.org/wp-content/uploads/2013/11/YOUR-NATIVE-GARDEN27S-FIRST-YEAR\\_final.pdf](https://theodorepayne.org/wp-content/uploads/2013/11/YOUR-NATIVE-GARDEN27S-FIRST-YEAR_final.pdf)



# Sheet Mulching Pilot Program



## INCENTIVE & REQUIREMENTS

**Rebate:** \$0.50 per SF of feature

### Requirements (check boxes):

- Progress photos required
- Sheet mulch layers must contain sufficient carbon and nitrogen source(s)



## BACKGROUND

Sheet mulching, also known as sheet composting or “soil lasagna,” is a method of removing existing grass by using layers of organic material while adding nutrients to the soil. It is a no-dig gardening technique that attempts to mimic nature’s soil-building process by breaking down organic material from the topsoil down. Soil that has undergone sheet mulching provides a healthy habitat for earthworms and other beneficial organisms, can retain more water, and over time will break up the compacted soil underneath it.

Sheet mulching may take up to 4 months to a year to fully break down, but there are 2 methods of sheet mulching that can be utilized based on the individual property’s needs and timeline:



*1 Traditional Sheet Mulching: Sheet mulch the entire project area and wait 6+ months to plant. The benefit of this method is that the soil should be fertile at the time of planting.*



*2 Accelerated Planting Sheet Mulching: Sheet mulch, cut holes in the cardboard, and plant trees and shrubs at any point in the sheet mulching process.*

New plants require a soil rich in carbon and nitrogen to flourish and grow.

**Carbon** sources for sheet mulching include:

- ❖ Organic mulch or wood chips
- ❖ Sawdust
- ❖ Deciduous leaves
- ❖ Cornstalks
- ❖ Pine needles
- ❖ Newspaper/cardboard
- ❖ Straw

**Nitrogen** sources include:

- ❖ Used coffee grounds
- ❖ Alfalfa pellets
- ❖ Vegetable scraps
- ❖ Fresh grass clippings
- ❖ Cottonseed meal
- ❖ Soybean meal/blood meal



## SMART PRACTICES

SCV Water recommends the following SMART practices for using sheet mulching to remove grass and amend soil:

- ❖ You will need: newspapers, cardboard, carbon source(s), nitrogen source(s). Do not sheet mulch with landscape cloth.
- 1) Water existing landscape the night before.
  - 2) Mow or scalp grass or other vegetation down to the lowest possible level. Leave clippings to provide food for the decomposers.
  - ❖ Do not turn the soil, but rather create small holes with a pitchfork or spade if the ground is compact. Turning disrupts soil ecology.
  - 3) Cover the ground with 4-6 overlapping layers of newspaper or cardboard. Wet the newspaper or cardboard thoroughly.
  - 4) Cover with a thin layer of Nitrogen source(s).
  - 5) Cover with about one quarter inch thick layer of newspaper, overlapping the edges. Wet thoroughly.
  - 6) Add another layer of Nitrogen compost.
  - 7) Add a layer of cardboard on top. Wet thoroughly.
  - 8) Add a layer of Carbon source, such as mulch, 3-6 inches deep.
  - ❖ Water the sheet mulched area once a week (if you do not experience rain).

## RESOURCES

California Native Plant Society Sheet Mulching Information:

<https://www.cnps.org/gardening/sheet-mulching-5875>

Green Santa Clarita Earth Arbor Day:

<https://greensantaclarita.com/eartharborday/earth-arbor-day-free-stuff/>



# Rain Gardens & Bioswales

## Water Retention Feature Pilot Program



### INCENTIVE & REQUIREMENTS

**Rebate:** \$0.50 per SF of feature (up to 2,500 SF)

**Requirements:**

- ❖ Must meet all requirements of SCV Water’s Lawn Replacement Program
- ❖ Must be built at a low point on the property



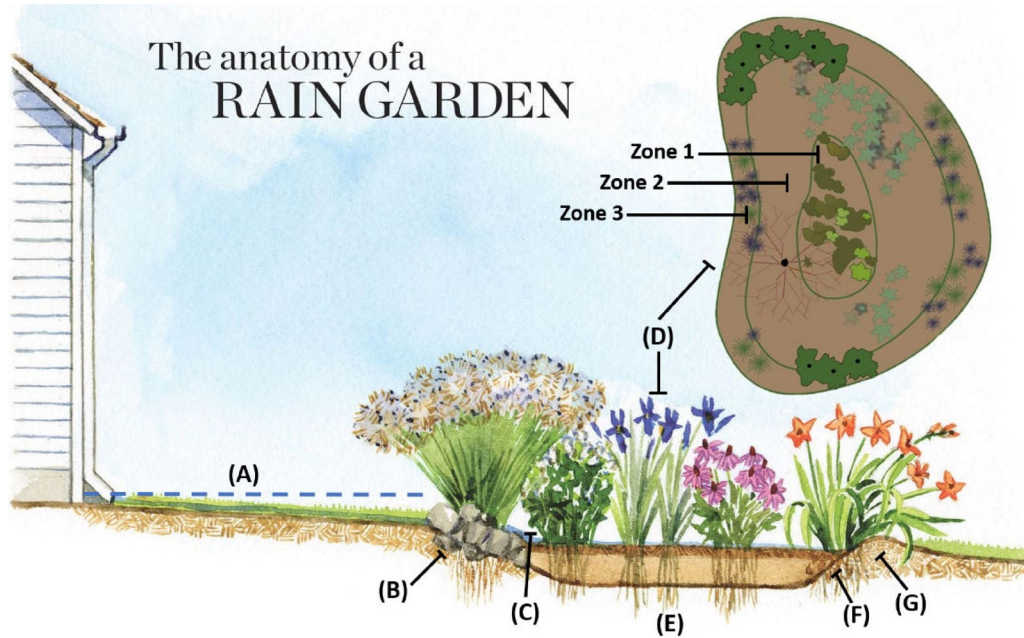
### BACKGROUND

Santa Clarita’s soil has high-clay content, meaning that it takes a long time for water to absorb into the ground. Because of this, water may not have time to absorb into the ground before running off, leading to erosion of soil and water waste.

Adding a rain garden or bioswale to your landscape design can help slow the movement of water from the property, allowing it to soak into the soil and decreasing stormwater runoff and erosion. A rain garden is a small, vegetated basin or depression in the soil which captures and absorbs rainwater runoff from rooftops and driveways. Similar to a rain garden, a bioswale is a planted channel which slows water flow and allows it to infiltrate into the soil. Bioswales are often placed along streets or sidewalks where they redirect water from running off the property, often used in a combination with a rain garden.

Rain gardens and bioswales are beneficial because they prevent runoff, filter pollutants, and increase water infiltration into the soil to replenish our ground water. They can also be planted with native plants and become havens of biodiversity, attracting many species of birds, butterflies, and other pollinators.





## SMART PRACTICES

SCV Water recommends the following SMART practices from The Anatomy of a Rain Garden diagram (above) for incorporating a rain garden and/or bioswale into your design:

- A) Rain gardens and bioswales must be located downslope from a downspout and should be a minimum of 10 feet from a home's foundation.
- B) Erosion protection at the inlet of a rain garden or bioswale (e.g., river rock and/or concrete splash pad) helps moderate the flow of water into the garden.
- C) Rain gardens have 6 to 12 inches of ponding depth to allow water to fill the rain garden before infiltrating.
- D) Select native plants with deep roots to attract songbirds and pollinators.
  - ❖ **Zone 1:** Use plants that can tolerate wetter conditions.
  - ❖ **Zone 2:** Use plants that can tolerate occasional standing water.
  - ❖ **Zone 3:** Use plants that prefer drier conditions.
- E) The rain garden bed should be at least 12 to 24 inches deep with a

predominantly flat bottom. Its soil should contain coarse/sandy particles to allow infiltration and finer organic matter to help retain moisture; adding compost helps with both.

- F) Side slopes or vertical walls can be used in your rain garden design.
- G) If your rain garden is on a slope, use some soil to build a berm. A berm is a raised bank of soil placed to help keep water in the rain garden or bioswale.

## RESOURCES

Xerces Society: Rain Gardens:  
<https://xerces.org/blog/rain-gardens-are-winwin>

Home & Garden Information Center:  
 Bioswales:  
<https://hgic.clemson.edu/factsheet/an-introduction-to-bioswales/>

Council for Watershed Health: Northridge Middle School:  
<https://storymaps.arcgis.com/stories/041ea9937157410c9bbfa141b7a240b3>



# Terracing

## Water Retention Feature Pilot Program



### BACKGROUND

Santa Clarita’s soil has high-clay content, meaning that it takes a long time for water to absorb into the ground. On hillsides and slopes, water does not have time to absorb into the ground before running off, leading to erosion of soil and water waste.

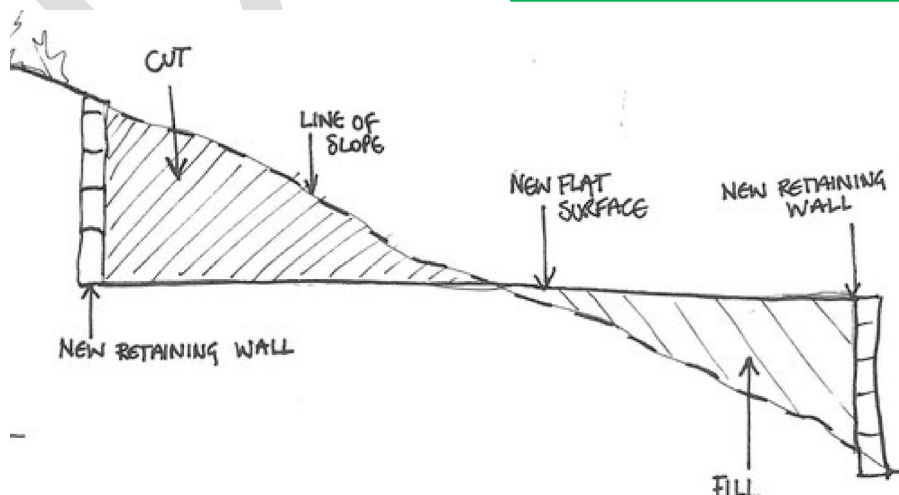
Adding terracing to hillsides and slopes can help improve water efficiency and prevent erosion. Terracing involves transforming sloping land into several level flat areas resembling a series of steps. It is 11.5 times more efficient at controlling erosion than non-terraced hillsides, and it enhances water infiltration, leading to an increase in soil moisture and water retention. Due to decreased erosion, soil also retains more nutrients. Terracing creates micro-watersheds and multiple garden areas to plant on that can be watered efficiently.

### INCENTIVE & REQUIREMENTS

**Rebate:** \$0.50 per SF of feature (up to 2,500 SF)

**Requirements:**

- ❖ Must meet all requirements of SCV Water’s Lawn Replacement Program
- ❖ Slope gradient must be over 15%





## SMART PRACTICES

SCV Water recommends the following SMART practices for terracing your slopes:

- ❖ Use drip irrigation at the base of the plants to water efficiently and prevent runoff.
- ❖ Make sure terraces are high enough so the land between them is fairly level.
- ❖ Build retaining walls at the edge of each terrace using strong materials such as treated wood, bricks, rocks, or concrete blocks to prevent erosion and runoff.
- ❖ The safest way to build a terrace is the cut and fill method:
  1. Determine the slope using rise (vertical height) and run (horizontal width). This will help you determine how many terraces you need.
    - Slope = Rise / Run
    - Ex: A slope has a rise of 8 ft and a run of 20 ft. If you want each terrace to be 5 ft wide, you will need 4 terraces. The height of each bed will be 2 ft.
    - Start building your terraces from the bottom up: dig a level trench. Add terracing material along the edge of the "step."
    - Start building the 2<sup>nd</sup> terrace. The 2<sup>nd</sup> trench should be level with the bottom of the first trench. Add terracing material. Repeat as needed.
    - When finished, add plants, irrigation equipment, and mulch.



## RESOURCES

NCBI Soil Water Management Practices:  
<https://www.ncbi.nlm.nih.gov/pmc/articles/PMC5985715/>

One Green Planet:  
<https://www.onegreenplanet.org/lifestyle/terrace-your-gardens/>

Backyard Conservation:  
[https://www.nrcs.usda.gov/Internet/FSE\\_DOCUMENTS/stelprdb1186059.pdf](https://www.nrcs.usda.gov/Internet/FSE_DOCUMENTS/stelprdb1186059.pdf)



# Bee Hotel

## Pilot Program



### INCENTIVE & REQUIREMENTS

**Rebate:** up to \$50 (limit 1 per meter)

**Requirements:**

- ❖ Must complete lawn replacement project and be eligible for LRP Native Plant Bonus Incentive
- ❖ Receipt of purchase of new, unused Bee Hotel required

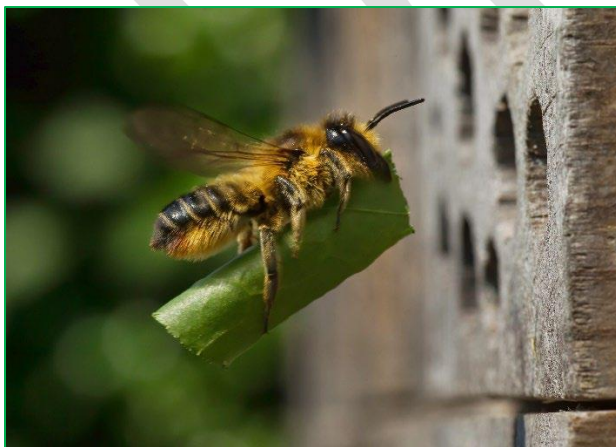


Figure 1 Leafcutter Bee (*Megachile sp.*)

### BACKGROUND

Bee hotels, also called bee houses, provide places for native solitary bees and other pollinators to make their nests. Many SCV-native bee species are solitary, rarely sting, and are non-swarming, making their nests in locations where long, tube-like holes are abundant, such as hollow twigs, soil, or abandoned insect burrows. Because SCV Water is offering a native plant bonus incentive for using a majority native plants, bee hotels provide a safe nesting place for their native pollinators, which are essential to the health of SCV and California native plants. Native plants and many other food crops, such as tomatoes, potatoes, cranberries, blueberries, eggplant, and kiwi, require something called Buzz Pollination to fruit due to the structure of the flower. Many native bee species pollinate using Buzz Pollination, while the now predominant species of non-native European honeybees cannot. For Buzz Pollination, a bee will land on a flower, quickly vibrate its body, and pollen will shoot out, covering the bee in pollen. The bee can then pass the pollen on to the next flower.





## SMART PRACTICES

SCV Water recommends the following SMART practices for adding a bee hotel to your garden:

- ❖ Keep the bee hotel small – large bee “condominiums” may attract pests and make it easier for insect diseases to spread among bee populations.
- ❖ The bee hotel should have an overhanging roof to protect nesting bees from rain and wind.
- ❖ Position the hotel to face south or southeast, at least 3 feet above the ground. Higher is better! Fasten securely to a tree or pole.
- ❖ Clean out tunnels yearly before spring after larvae has hatched to prevent parasites (such as pollen mites), mold, fungus, and disease which may harm the bees.
- ❖ Replace drilled wood blocks or reeds as needed, or every 2 years.
- ❖ In addition to native bees, native wasps and other insects *may* nest in bee hotels, but they pollinate and play essential roles in native landscapes as well.
- ❖ Do not use insecticides in your lawn or garden to protect pollinators.
- ❖ SCV Water does not guarantee Bee Hotel occupancy.



Figure 2 Blue Orchard Mason Bee (*Osmia lignaria propinqua*)



## RESOURCES

Xerces Society for Invertebrate

Conservation: <https://xerces.org/pollinator-conservation/nesting-resources>

Michigan State University: Building and Managing Bee Hotels for Wild Bees:

<https://pollinators.msu.edu/publications/building-and-managing-bee-hotels-for-wild-bees/>

Edmonton & Area Land Trust: How do Bee Hotels Work?:

<https://www.ealt.ca/blog/bee-hotel-maintenance>

UC Davis Arboretum and Public Garden: California Native Bees:

<https://arboretum.ucdavis.edu/blog/beyond-honey-bee-learn-more-about-california-native-bees>

# Owl Box

## Pilot Program

**Rebate:** up to \$50 (limit 1 barn owl box OR screech owl box per meter)



Barn owls and screech owls almost exclusively hunt nocturnal rodents, including gophers, mice, and rats, and installing an owl box encourages a natural pest control without the need for harmful chemicals. Just one barn owl can consume over 3,000 rodents a year and are often utilized as part of integrated pest management (IPM) plans. Barn owls and screech owls are dedicated rodent hunters, and there is little chance of harm to songbirds, chickens, or pets. Barn owls and screech owls have a high tolerance for humans and may still nest in close proximity to homes and urban areas.

### BACKGROUND

There are 7 species of owls that live in Santa Clarita, including barn owls and screech owls, which nest in the cavities of trees. Historically, SCV's hills were rich with oaks and sycamore, but habitat loss has caused owl species to decline significantly nationwide.

SCV Water is piloting an Owl Box rebate program as a component of its Lawn Replacement Program. Landscapes with shrubs may provide habitat for rodents or other undesirable pests. Many choose to use rodenticide to eliminate these pests, but rodenticides are harmful to the environment, to other wildlife, and to public health.



### RESOURCES

Barn Owl Box Company: <https://bit.ly/3nKiVRF>

City of Santa Clarita Owl Box Project: <https://bit.ly/3oNRKV6>

CLAW: Citizens for Los Angeles Wildlife:  
<https://bit.ly/3l3vaa6>

Owl Box Pilot Program v.20211123

## INCENTIVE & REQUIREMENTS

**Rebate:** up to \$50 (limit 1 barn owl box OR screech owl box per meter)

### Requirements:

- ❖ Must complete lawn replacement project and be eligible for LRP Native Plant Bonus Incentive
- ❖ Receipt of purchase of new, unused Owl Box required
- ❖ Boxes may be made from either wood or plastic. Do not use boxes with natural (unpainted) wood. The best way to repel heat is to paint the box white or purchase a white box.
- ❖ **Barn Owl Boxes:**
  - At least 24" deep, 18" high, and 18" wide
  - Must have a 5" to 5 1/2" entrance hole that is at least 6" off the floor of the box
  - Box must be mounted on a sturdy post at least 10 ft off the ground (no higher than 15 ft)
- ❖ **Screech Owl Boxes:**
  - At least 9" deep, 16" tall, and 9" wide
  - Must have a 3" entrance hole at least 9" off the floor of the box
  - Box must be mounted approximately 10 ft off the ground on medium to large sized tree trunks, beneath the shade of foliage



## SMART PRACTICES

SCV Water recommends the following SMART practices for maintaining an Owl Box:

- ❖ Owls prefer easterly facing boxes (NE, SE, or E). This allows for passive thermoregulation as the box facing east receives the warm morning sun and faces away from the west when the afternoon sun is hottest.
- ❖ Make sure the owl box with entrance hole is clearly visible from nearby open areas and no branches obstruct a direct flight path to the box.
- ❖ The best time of year to install an owl box is anywhere from December through March, but boxes can be installed anytime of year.
- ❖ Position the owl box at least 50 ft from a house or busy street and away from pets.
- ❖ Place 3-4" of green garden mulch (unshredded) across the floor of the box to provide a softer substrate. Mulch made from pine, fir, or hardwood is best.
- ❖ Clean out the nest box every September to November once breeding season is over. Add more mulch inside. If you encounter birds, eggs, or chicks, put off cleaning until the next year.
- ❖ You may encounter owl pellets, which consist of indigestible parts of their prey. Owl pellets should be avoided or cleaned up to prevent exposure to potentially harmful bacteria, such as Salmonella.
- ❖ It may take a season or two for the box to become occupied. In areas where barn owls are common, occupation rates of 60-90% can occur within the first season or two. SCV Water does not guarantee an owl will occupy an owl box.



# Rain Barrels

## Pilot Program



### INCENTIVE & REQUIREMENTS

**Rebate:** up to \$75 (limit 2 per meter)

**Requirements:**

- ❖ Be a SCV Water customer with active water account in good standing
- ❖ Receipt of purchase of new, unused Rain Barrel required
- ❖ Be made from recycled or repurposed materials



### BACKGROUND

Irrigation use typically accounts for about 60% of home and business water consumption and while in most years we can shut off our irrigation systems from December through April, there are some weeks where gardens, trees, shrubs, and household ornamental plants can use an extra drink. Rain Barrels provide a cost-effective way for homeowners and businesses to capture rainwater for irrigation use and/or to water indoor plants. Also known as "Cisterns," Rain Barrels collect rainfall from rooftops and structures to be stored for later use and reduce stormwater runoff into streets and waterways. While water collected from rainwater is not potable (drinking quality), it is generally considered safe for watering plants where the roots are located (see Smart Practices below for more details). On average, the SCV receives about 17 inches of rain each year, or about 10.5 gallons per square foot of surface area. A home with a 1,000 square foot roof can collect up to 10,591 gallons of rainwater per year<sup>1</sup>. Many readily available Rain Barrels range from 40-80 gallons, typically considered adequate for most households. Rain Barrels are available for purchase online or may be found at local nurseries, irrigation supply houses, or home improvement stores.

<sup>1</sup> Actual volumes collected will vary based on barrel size, frequency of use, and rainfall.



- ❖ Consider using the barrel to collect air conditioner condensate during the summer months when rainfall is sparse.
- ❖ Decorate and customize your Rain Barrels to add fun colors and designs to your home or business garden!
- ❖ SCV Water does not guarantee or warranty any Rain Barrel product or practice.



## SMART PRACTICES

SCV Water recommends the following SMART practices for adding a Rain Barrel to your home:

- ❖ Purchase barrels made from “food grade” recycled materials.
- ❖ Install fully screened intake ports to keep out mosquitos, insects, and debris.
- ❖ Install Rain Barrel on a flat surface and consider elevating barrel using cinder blocks and a sturdy wooden frame.
- ❖ Choose rain barrels with removable, yet secure, lids to provide easy access when cleaning or when using with watering cans.
- ❖ Best when used with closed intake ports connected to raingutter and downspouts.
- ❖ Use collected rainwater within two weeks of collection.
- ❖ Use with regular hose or soaker hose.
- ❖ Ensure the overflow is pointing away from structures and walkways to avoid trip and fall hazards or water damage.
- ❖ Remove water and store Rain Barrel indoors during prolonged freezing periods to avoid damage.

## RESOURCES

Greater Los Angeles County Vector Control District:

<https://www.glamosquito.org/harvest-water-not-mosquitoes-a-guide-to-keep-your-home-mosquito-free>

American Rainwater Catchment Systems Association:

[https://cdn.ymaws.com/www.arcsa.org/resource/resmgr/docs/arcsa\\_rwh\\_brochure 5.1 7.16.pdf](https://cdn.ymaws.com/www.arcsa.org/resource/resmgr/docs/arcsa_rwh_brochure_5.1_7.16.pdf)

Sightline Institute:

<http://sightline.wpengine.netdna-cdn.com/wp-content/uploads/2015/02/rain-garden-trifold.pdf>



**Santa Clarita Valley Water Agency  
Water Resources & Watershed Committee and Board Calendar**

**ITEM NO.  
5**

**FY 2021/22**

	Item	Jul 6 Board	Jul 14 Comm	Aug 3 Board	Aug 11 Comm	Sep 7 Board	Sep 8 Comm	Oct 5 Board	Oct 13 Comm	Nov 2 Board	Nov 10 Comm	Nov 16 Board	Dec 7 Board	Dec 8 Comm	Jan 4 Board	Jan 12 Comm	Feb 1 Board	Feb 9 Comm	Feb 15 Board	Mar 1 Board	Mar 9 Comm	Apr 5 Board	Apr 13 Comm	May 3 Board <i>TO BE MOVED</i>	May 11 Comm	Jun 7 Board	Jun 8 Comm
1	Update on Conservation Activities & Performance		C		C		C		C		C			C				P			P		P		P		P
2	Status of Drought Response and Performance				C		C				C			C		C		P			P		P		P		P
3	Status of Water Supplies													C		C		P					P				
4	Devil's Den Semi-Annual Report						C	C										P									
5	Authorize the General Manager to Enter Into Agreement with TerraVerde Energy for Application Prepararation and Project Management for Self Generating Incentive Program Projects (Photovoltaic and Battery Storage) Funding															C				P							
6	Recommend that the Board Authorize the General Manager to Enter Into Water Exchange Agreements with Irvine Ranch Water District																				P						
7	Recommend Adoption of a Resolution Approviing the Water Supply Assessment for the Castaic Mountainview Apartment Project																					P	P				
8	Authorize the General Manager to Enter into an Agreement to Fund Planning Costs for the Proposed High Desert Groundwater Banking Program																					P	P				
9	Recommend Approval of a Resolution Adopting Recycled Water Rules and Regulations																					P	P				
10	Status of Sustainable Groundwater Management Act Implementation				C										C							P					
11	Status of Water Supply and Water Banking Programs						C															P					
12	Update on Water Resiliency Plan Iniative Activities																					P					
13	Recommend Adopting a Resolution Authorizing Creation of a Standby Charge for the Tesoro del Val Annexation Area.																						P	P			
14	Authorize General Manager to enter into contracts for Water Resiliency Plan Initiative																						P		P		
15	Review and Discussion of FY 2021/22 and FY 2022/23 Water Resources Operating Budget and Minor and Major Capital Projects Budgets																						P				
16	Status of Sites Reservoir Project, Rosedale-Rio Bravo Water Banking Program and AVEK High Desert Banking Program		C												C												
17	Review of Lawn Replacement Program Evaluation				C																						
18	Status of Efforts Relating to Groundwater Spreading Pilot Program				C																						
19	Recommend Authorizing the General Manager to Enter into a Contract with Kris Helm Consulting for Water Resources Strategic Planning Services																										
20	Recommend Approval of Modification to Lawn Replacement Program																										
21	CLOSED SESSION: Devil's Den Real Property Negotiation and Ongoing Litigation																										

**Santa Clarita Valley Water Agency  
Water Resources & Watershed Committee and Board Calendar**

**ITEM NO.  
5**

**FY 2021/22**

	Item	Jul 6 Board	Jul 14 Comm	Aug 3 Board	Aug 11 Comm	Sep 7 Board	Sep 8 Comm	Oct 5 Board	Oct 13 Comm	Nov 2 Board	Nov 10 Comm	Nov 16 Board	Dec 7 Board	Dec 8 Comm	Jan 4 Board	Jan 12 Comm	Feb 1 Board	Feb 9 Comm	Feb 15 Board	Mar 1 Board	Mar 9 Comm	Apr 5 Board	Apr 13 Comm	May 3 Board <i>TO BE MOVED</i>	May 11 Comm	Jun 7 Board	Jun 8 Comm
22	Status of Devil's Den Solar Generation Facilities							C																			
23	Approve a Resolution Authorizing the General Manager to Apply for Grant Funding Under the Federal Bureau of Reclamation WaterSmart Drought Relief Program for the Rosedale Phase 2 Wells Project								C	C																	
24	CLOSED SESSION: Property Negotiation - Water Transfers								C																		
25	Status of Upper Santa Clara River Salt and Nutrient Management Plan								C																		
26	Update on Water Operating Plan and Water Conservation Response Actions								C																		
27	Discuss and Consider Potential Amendment to the Deposit and Funding Agreement between Santa Clarita Valley Water Agency and DACA-Castaic, LLC for Tapia Ranch										C		C														
28	CLOSED SESSION: Anticipated Litigation										C																
29	Consider Adoption of a Resolution to Enact Stage 1 of the Water Shortage Contingency Plan and Water Conservation and Water Supply Shortage Ordinance											C															
30	Authorize the General Manager to Enter into a Lease Agreement with Rolling Hills Farms for the Devil's Den Property												C														
31	Status of Integrated Regional Water Management Plan Update													C													
32	Recommend Approval of Amendment to Sites Reservoir Planning Costs Agreement															C	C										
33	Status of Sustainability and Climate Action Plan															C											
34	Status of Recycled Water Program																										
35	Recommend Authorizing the General Manager to Execute an Construction Contract for Bridgeport Pocket Park - TBD																										

P = Planned  
C = Completed  
CNL = Cancelled  
CNT = Continued Item