

ABOUT THE DROUGHT

STATUS OF DROUGHT RESPONSE AND PERFORMANCE

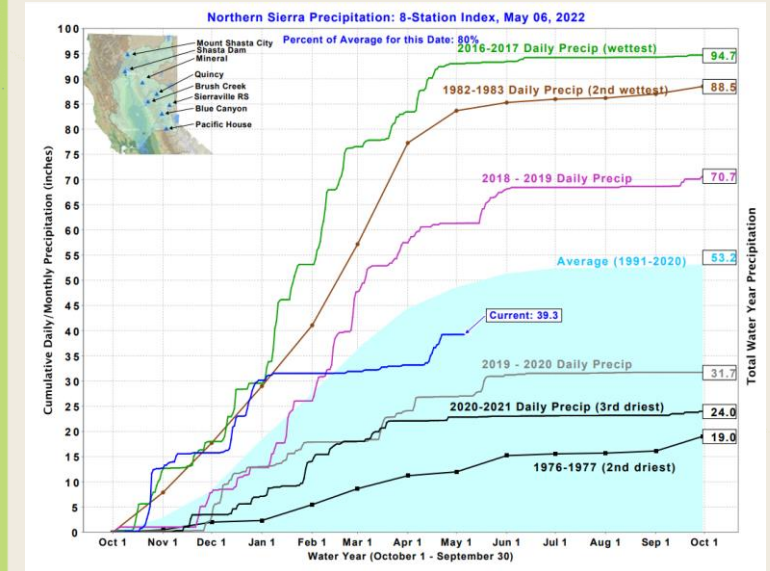
MATTHEW DICKENS, MPA
SUSTAINABILITY MANAGER



Water Resources and Watershed Committee
May 11, 2022
Item No. 5.2

PRESENTATION OVERVIEW

1. REGULATORY STATUS
2. SCV WATER DROUGHT READY
3. DEMAND PERFORMANCE
4. WATER SHORTAGE CONTINGENCY PLAN – STATUS DISCUSSION



Northern Sierra Precipitation Index (5/6/2022)





REGULATORY STATUS

STATE & LOCAL

REGULATORY UPDATES

➤ GOVERNOR EMERGENCY DECLARATIONS

- April 21, 2021 (2 Counties)
- May 10, 2021 (Extended to 41 Counties)
- July 9, 2021 (Extended to 50 Counties & 15% Voluntary Conservation v. 2020)
- September 21-22 (State Water Resources Control Board Monthly Reporting)
- October 19, 2021 (Drought Emergency Extended to Include All Counties)
- January 4, 2021 (SWRCB Adopts Emergency Regulations)
- March 28, 2022 (Executive Order N-7-22)
- **By May 25, 2022 (SWRCB to Consider Emergency Regulations)**

➤ SCV WATER – WATER SHORTAGE CONTINGENCY PLAN/WATER CONSERVATION AND WATER SUPPLY SHORTAGE ORDINANCE

- **April 26, 2022 (SCV Water Enacts Stage 2 WSCP and Ordinance)**
- 11/16/2021 (SCV Water Enacts Stage 1 WSCP and Ordinance)
- Conservation Program Uptake Increasing
- Drought Communication & Engagement Enhancements





SCV WATER DROUGHT READY

DROUGHT RESPONSE & COMMUNITY LEADERSHIP

SCV WATER – WSCP & ORDINANCE

**WSCP Level 2 Strategy
Moderate Shortage**



WSCP STAGE 2- DROUGHT PROGRAMS

Conservation Programs:

- Lawn Replacement Rebates
- Drought Ready Check-Ups
- Smart Controller Rebates
- HELP Rebates (HE Irrigation Improvements)
- Drip Conversion Rebates
- Irrigation Check-Ups
- Online Workshops
- Education Classes



WSCP STAGE 2 – WATER WASTE RESTRICTIONS

Restrictions:

- Allowing Runoff
- Washing cars without hose nozzle
- Using water to wash down sidewalks, driveways, and hardscapes
- Irrigating during and within 48 hours of measurable rain (.25 inch)
- Using fountains without recirculating pump
- Watering turf on public medians



WSCP STAGE 2 – WATERING RESTRICTIONS

Restrictions:

- **Limits on Watering Days to 3 Day per Week Watering**
 - Odd Addresses (M,W,F)
 - Even Addresses (T,Th,Sun)
 - No Watering on Saturdays
- **Limits on Watering Station Run Times (Duration)**
 - Two 5-minute cycles (10 minutes max)
- **Watering Times (Time of Day)**
 - Nov-Apr → 6 PM to 10 AM
 - May-Oct → 8 PM to 9 AM





SCV WATER DEMAND PERFORMANCE

**NORMAL CONSERVATION & DROUGHT RESPONSE
TARGETS**

LOCAL WEATHER STATISTICS

LOCAL ET & PRECIPITATION

*CIMIS 204



Evapotranspiration (2022 v. 2020)

- Current Month → +30.6%
- Year to Date → +29.2%



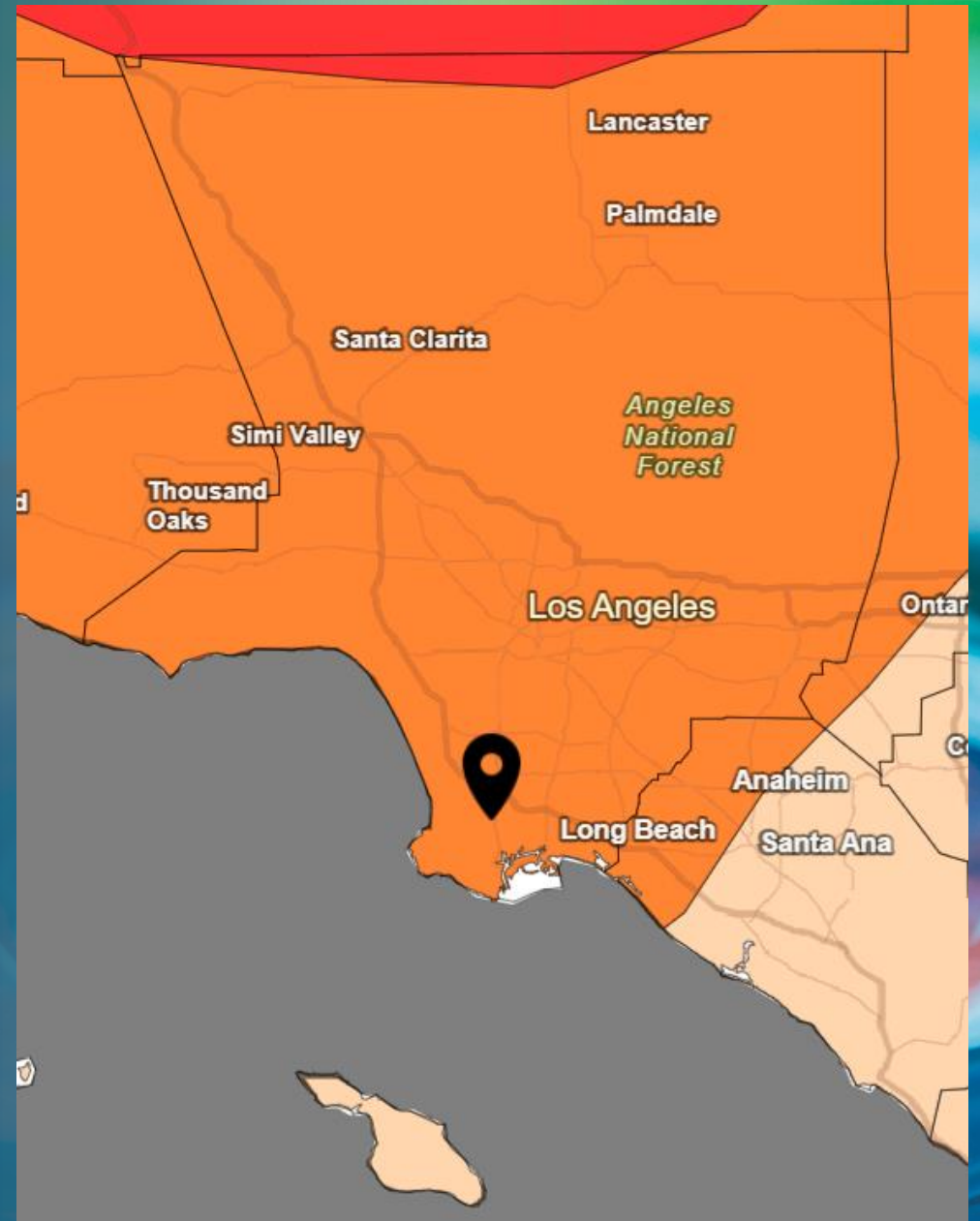
Precipitation (2022 v. 2020)

- Current Month → 0.16"
- Year to Date → -77.7%



Temperatures (Avg. Max Air Temp)

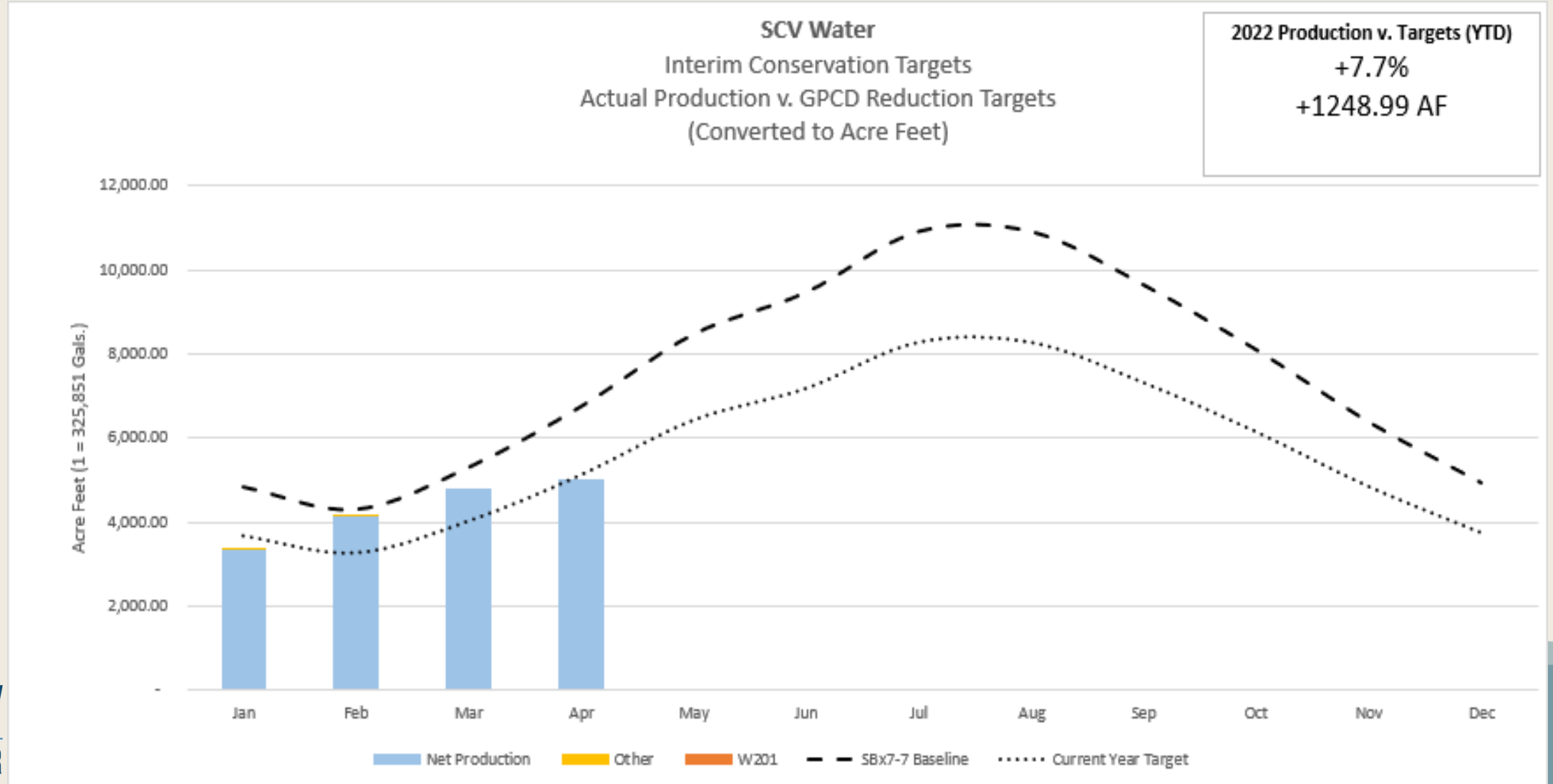
- April 2022 → 77.0
- April 2020 → 73.2



Source: [Drought.gov/states/California/county/los%20angeles](https://drought.gov/states/California/county/los%20angeles)

INTERIM CONSERVATION TARGET – PERFORMANCE

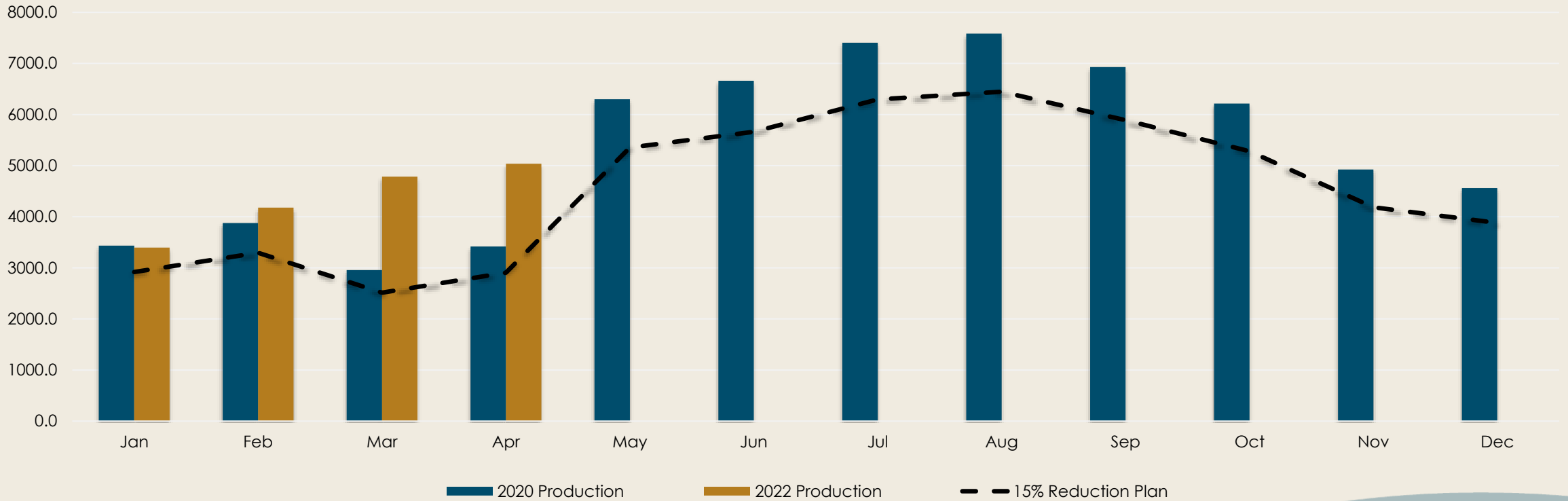
INTERIM WATER CONSERVATION TARGET (24% BY 2022)



DROUGHT CONSERVATION TARGET

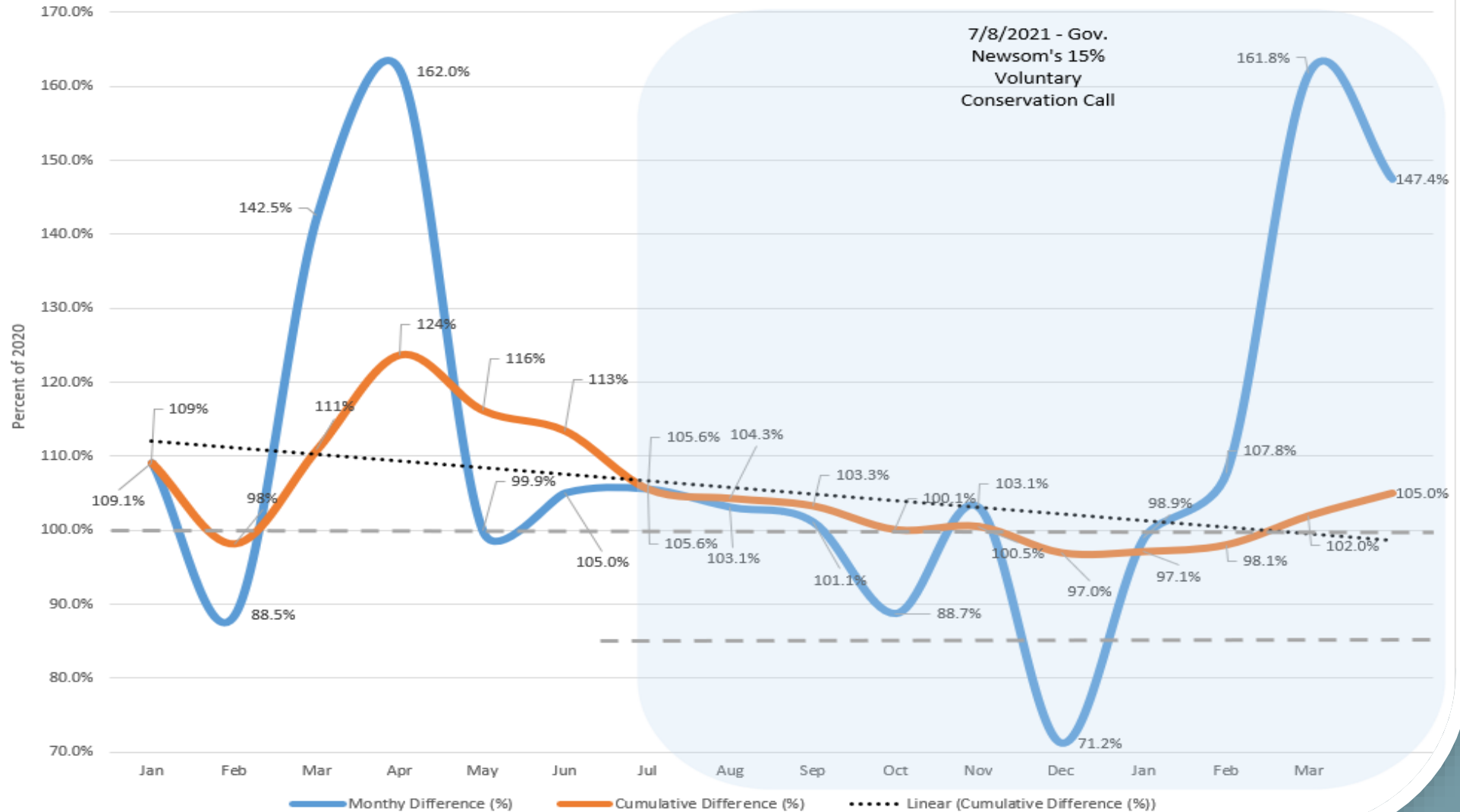
VOLUNTARY DROUGHT CONSERVATION TARGET (15% V. 2020)

SCV Water
Monthly Production vs. 15% Reduction Plan (Ac-ft)



DROUGHT CONSERVATION TARGET

SCV Water
Drought Conservation Performance
(2021 & 2022 vs. 2020)



DROUGHT CONSERVATION TARGET

SCV Water (Monthly Progress)

Progress Towards 15% Savings

Region Type: Hydrologic Region | Select months: (Multiple values)

Region	December	January	February	Cumulative
Central Coast	-15.6%	3.7%	2.5%	-5.7%
Colorado River	-5.8%	19.0%	3.2%	-1.8%
North Coast	-8.4%	0.5%	-5.9%	-14.5%
North Lahontan	-9.4%	6.3%	-0.2%	-9.4%
Sacramento River	-13.3%	6.3%	6.7%	-7.9%
San Francisco Bay	-12.8%	-1.5%	-4.6%	-10.5%
San Joaquin River	-11.9%	7.2%	0.9%	-4.5%
South Coast	-18.4%	1.7%	-0.2%	-4.6%
South Lahontan	-8.8%	9.0%	-10.4%	-4.2%
Tulare Lake	-12.2%	0.2%	-3.3%	-4.4%
Statewide	-15.7%	2.6%	-0.5%	-5.8%

Month	Diff. (%)	Cum. (%)
Jul.	+5.6%	+5.6%
Aug.	+3.1%	+4.1%
Sep.	+1.1%	+3.3%
Oct.	-11.3%	+0.1%
Nov.	+3.1%	+0.5%
Dec.	-29.0%	-3.0%
Jan.	-1.1%	-2.9%
Feb.	+7.8%	-1.9%
Mar.	+61.8%	+2.0%
Apr.	+47.4%	+5.0%

Source: State Water Resources Control Board (2/8/2022)





ACTIONS & NEXT STEPS

ON THE RADAR

ACTIONS & NEXT STEPS

- APRIL/MAY – SWRCB ACTIVITIES (STAGE 2 REQUIREMENT & NON-FUNCTIONAL TURF)
- MAY – STAGE 2 DROUGHT BULLETIN
- MAY- INCREASE IN COMMUNITY ENGAGEMENT, PERFORMANCE COMMUNICATIONS, CONSERVATION MESSAGING
- MAY/JUNE - DROUGHT READY VIDEOS
- CONTINUED PERFORMANCE MONITORING & ADAPTIVE MANAGEMENT





Q&A

SCV WATER DROUGHT RESPONSE AND DEMAND PERFORMANCE