



SCV
WATER

April 12, 2023

**FY 2023/24 & 2024/25
OPERATING AND CAPITAL BUDGETS
WATER RESOURCES AND SUSTAINABILITY**

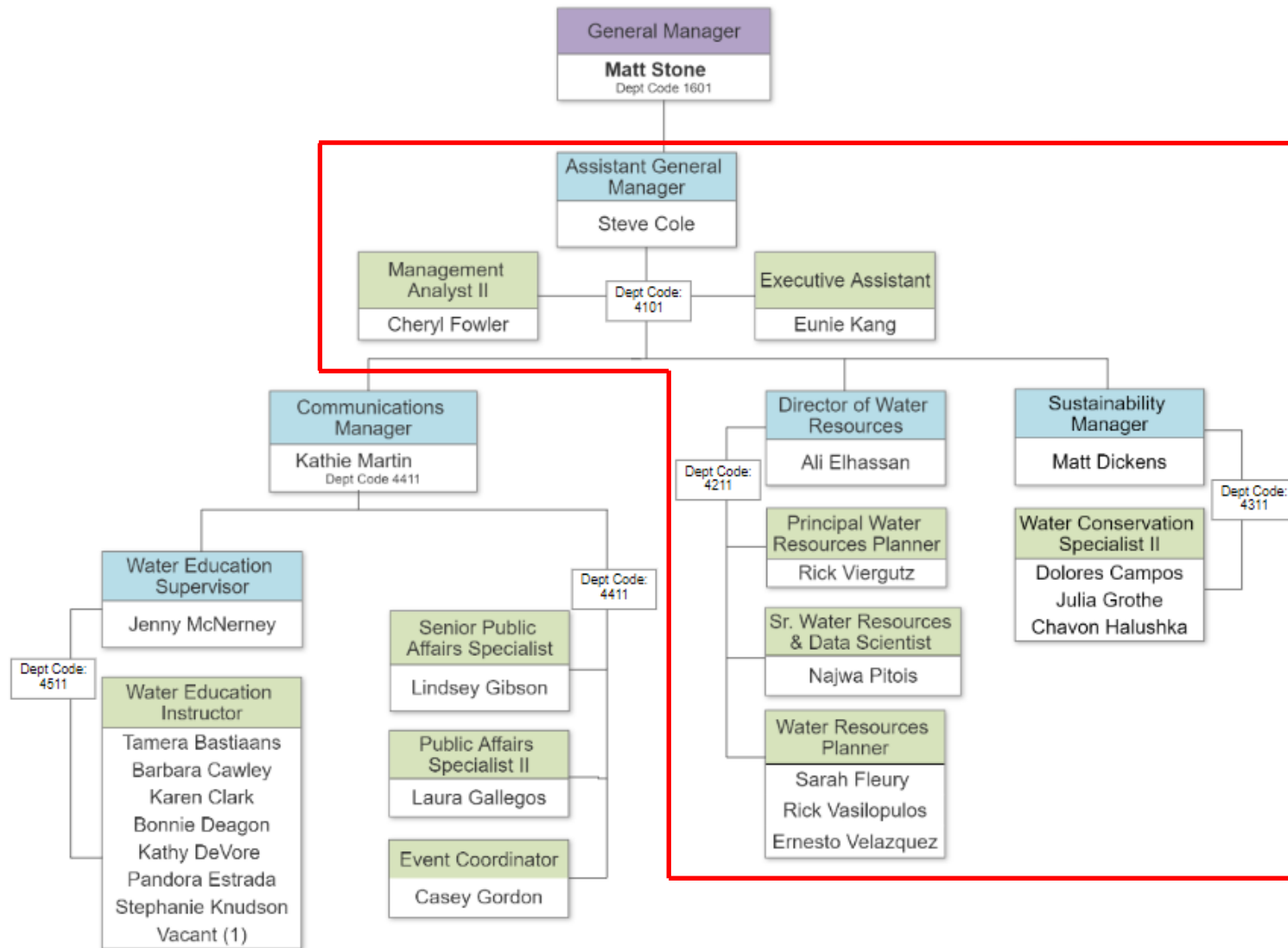
Two-Year Budget Overview

- Operating Budget - covers essential functions and fulfills Agency objectives
 - *Proposed additional needed staffing:*
 - ✓ Administrative Technician (FY2024)
 - ✓ Sr. Water Resources Specialist (FY2024, Mid-Year)
 - ✓ Water Conservation Specialist II (FY2024, limited term duration)
 - ✓ Water Resources Specialist (FY2024)
- Capital Budget - provides funds for enhancing Agency future investments in reliability and sustainability

What do we want to achieve with the Water Resources budget?

- Alignment with Strategic Plan Goals/Objectives
- Compliance with new regulatory requirements
- Ensuring sustainable resources for today and the future
- Addressing challenges - uncertainty with climate change and contaminants

**WATER RESOURCES,
WATERSHEDS &
OUTREACH**



03/2023

DESCRIPTION	FY 2023-24	FY 2024-25
Professional Services - Consulting		
SNMP Implementation	\$ 190,000	\$ 75,000
Urban Water Management Plan	\$ -	\$ 155,000
Grant Administration	\$ 120,000	\$ 120,000
Integrated Regional Water Management	\$ 12,000	\$ 12,000
Ventura County Flexible Storage (fixed annual fees)	\$ 17,888	\$ 17,888
Water Banking - Semitropic (fixed annual fees)	\$ 82,600	\$ 85,100
Water Banking (RRB Min O&M)	\$ 25,000	\$ 25,000
Annexation Support	\$ 25,000	\$ 25,000
CEQA Professional Services (not Projects)	\$ 20,000	\$ 20,000
Recharge Studies (assessments for infrastructure)	\$ 100,000	\$ 100,000
Grant Consulting (applications)	\$ 100,000	\$ 100,000
Misc. Consulting Services (unanticipated work)	\$ 150,000	\$ 150,000
New Drop (Customer Service Integration)	\$ 75,000	\$ 25,000
On-Call Groundwater Resource Consulting	\$ 100,000	\$ 100,000
3D Visualization	\$ 25,000	\$ 25,000
Data Mapping and Consolidation Study	\$ 50,000	\$ -
Recycled Water Optimization Plan	\$ 200,000	\$ 50,000
Data Management Consulting	\$ 35,000	\$ 35,000
Attorney/Client work Data Visualization	\$ 23,000	
Total Professional Services	\$ 1,350,488	\$ 1,119,988
Groundwater Sustainability Agency	\$ 909,000	\$ 794,000
Devil's Den Landowner Expenses	\$ 300,000	\$ 300,000
Devil's Den Variable DWR Charges	\$ 100,000	\$ 100,000
SOURCE OF SUPPLY	FY 2023-24	FY 2024-25
Buena Vista/Rosedale Rio Bravo Supply (11,000 AF)	\$ 8,600,000	\$ 9,011,000
Firming Programs (Banking)	\$ 2,400,000	\$ 2,500,000

WATER RESOURCES

Operating Budget



WATER RESOURCES - Capital Budget

DESCRIPTION	FY 2023-24	FY 2024-25
Buena Vista/Rosedale Rio Bravo Supply (11,000 AF)	\$ 3,250,000	\$ 3,400,000
Deep Monitoring Wells (GSA)	\$ 2,500,000	\$ 2,390,000
Devil's Den Property Solar Project	\$ 100,000	\$ 100,000
Invasive Species Management	\$ 265,000	\$ 279,575
Yuba Water Accord	\$ 500,000	\$ 1,217,829
Resiliency Water Master Plan	\$ 1,175,000	\$ 1,025,000
Sites Reservoir	\$ 800,000	\$ 900,000
New Water Banking Program (AVEK, MidValley, Rosedale)	\$ 500,000	\$ 750,000
	\$ 9,090,000	\$ 10,062,404

Water Resources - *Capital Budget Highlights*

- **Resiliency Water Master Plan** (FY 23-24 and 24-25 **\$2.2 M**)
- **BVRRB Firm Water Purchase 11 TAF** (FY 23-24 and 24-25 **\$6.6 M**)
- **Future Banking opportunities** (FY 23-24 and 24-25 **\$1.3 M**)
 - AVEK-High Desert Water Bank
- **Sites Reservoir** (FY 23-24 and 24-25 **\$1.7 M**)

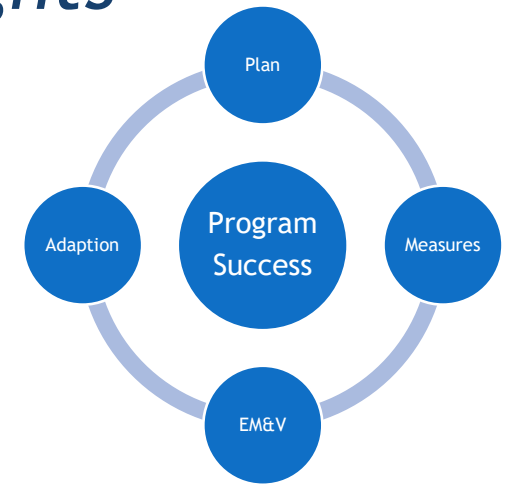


SUSTAINABILITY - Operating Budget

DESCRIPTION	FY 2023-24	FY 2024-25
Water Conservation Programs - Public Engagement	\$ 522,000	\$ 538,000
Water Conservation Programs - Foundational Programs	\$ 78,300	\$ 80,700
Water Conservation Programs - Residential Programs	\$ 861,300	\$ 887,700
Water Conservation Programs - Commercial/Industrial/Institutional Programs	\$ 313,200	\$ 322,800
Water Conservation Programs - Large Landscape Programs	\$ 835,200	\$ 860,800
Water Conservation Planning - Sustainable WUE Plan Update	\$ 250,000	\$ -
Water Conservation Planning - Water Shortage Contingency Plan Update		\$ 125,000
Water Conservation EM&V - Studies, Evaluations, Program Development	\$ 100,000	\$ 103,000
Water Conservation - Bridgeport Park Sustainable Landscape Demonstration Garden Maintenance	\$ 25,000	\$ 25,750
Sustainability - Audits & Analysis	\$ 128,750	\$ 132,613
Sustainability - Efficiency Measures	\$ 154,500	\$ 159,135
Sustainability - Solar Array OM/PM Management	\$ 122,000	\$ 125,660
Sustainability - Solar Array Maintenance Services	\$ 87,550	\$ 90,177
	\$ 2,955,800	\$ 3,451,334

Sustainability - Operating Budget Highlights

- **Water Conservation Programs/Outreach (FY 23-24 and 24-25 \$5.3 M)**
 - Public Engagement
 - Implements water conservation measures
 - Conducts research, program evaluation, measurement, and verification
- **Water Use Efficiency Strategic Plan (FY 23-24 \$250K)**
 - Develop sustainable water use program that meets customer needs, Agency goals, and State mandates
- **Sustainability (FY 23-24 and 24-25 \$1M)**
 - Audits/Efficiency Measures
 - Solar Panel Management/Maintenance



SUSTAINABILITY - Capital Budget

DESCRIPTION	FY 2023-24	FY 2024-25
Purple PREP - RW Conversion (Phase 2B)	\$ 250,000	\$ 100,000
Purple PREP - RW Conversion (Phase 2D)	\$ 600,000	\$ 500,000
Water Conservatory Garden & Education Experience	\$ 2,000,000	\$ 2,000,000
Battery Energy Storage Project (RVWTP SGIP)	\$ 3,250,000	\$ -
Solar Array Improvements & Replacements	\$ 150,000	\$ 150,000
Water Demand Factor Software Development	\$ 50,000	\$ 75,000
WaterSAVINGS Target Software Development	\$ 100,000	\$ 100,000
Bridgeport Park - Sustainable Landscape Demonstration Garden	\$ 25,000	\$ -
	\$ 6,425,000	\$ 2,925,000

Sustainability - Capital Budget Highlights

- **Purple Prep Recycled Water Conversion** (FY 23-24 and 24-25 **\$1.45 M**)
- **Water Conservation Garden/Education** (FY 23-24 and 24-25 **\$4 M**)
- **Battery Storage (RVWTP)** (FY 23-24 **\$3.25 M**)



Recommendation

- Incorporate the proposed Water Resources and Sustainability Operating/Capital budgets into the FY 2023/24 & 2024/25 Agency budget



The background features a white central area framed by curved, overlapping bands of dark blue and light green. The word "QUESTIONS?" is centered in a bold, dark blue font.

QUESTIONS?