



October 5, 2023

# Procore

## Construction Management Software

Engineering and Operations  
Committee

# Procore Overview

- Used to manage all the Agency projects that in active construction.
- Internet and cloud based for ease of access.
- Can be easily customized to match the Agency's format and needs.
- Makes it easy for an Engineer in a different community to collaborate with the Agency engineers and staff, to complete construction projects with consistency and ease of communication.

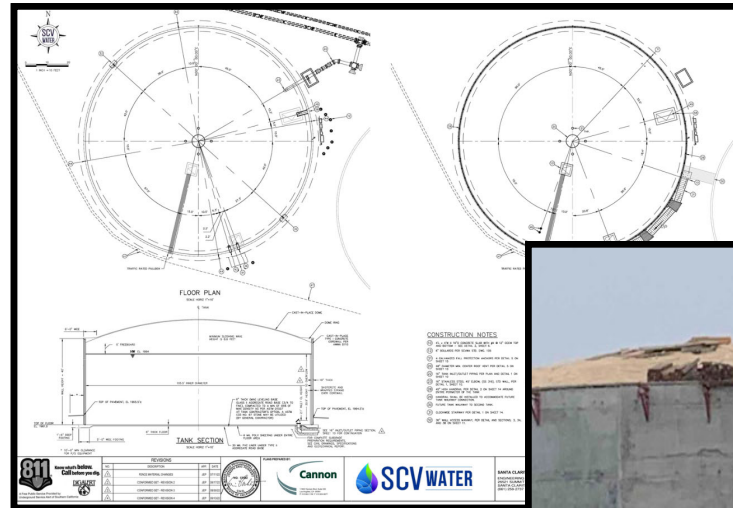


# Procore Benefits

- Documentation
- Organization
- Accountability
- Consistency and Uniformity



# Documentation



**SCV WATER** Santa Clara Valley Water Agency  
27224 Buckwalter Canyon Road  
Santa Clara, California 95050  
P: +14082971800

Project: 190115B, 190116I, 190117I, 190118B -  
FirePoint/San Hill - Mission Village Phase 2B-1  
Santa Clara, California 95050  
P: +14082971800

**Daily Log: Wednesday 9/20/2023**

Daily Log Completed  
The Daily Log was completed by Darryl Ramos on Thu, Sep 21, 2023 at 9:02 PM PDT.

**WEATHER REPORT**

Temperature		Precipitation		Humidity		Windspeed	
Low	High	Avg	Midnight	2 Days Ago	3 Days Ago	Low	High
57°F	80°F	69°F	0.00 in.	0.00 in.	0.00 in.	37%	72%
						97%	59°F
						3.9 mph	6 mph

**DAILY SNAPSHOT**

05:00 AM	09:00 AM	12:00 PM	03:00 PM	06:00 PM	09:00 PM
Cloudy	Cloudy	Cloudy	Cloudy	Partly Cloudy	Clear
57°F	79°F	81°F	79°F	69°F	60°F

**OBSERVED WEATHER CONDITIONS**

No.	Time Observed	Weather	Delay	Sky	Temp	Average	Precipitation	Wind	Ground/Site
1	09:36:00 AM	No	No						

**NOTES LOG**

No.	Issue?	Location	Comments
1	No	Golden Yarrow PW	DR-31PW - Line WC Zone 1B, Sta. 3+03 - 3+03. Inspector notified existing with most design from SCVWA approved. Assurances between Golden Yarrow that would be a conflict of the 60" max cover over PW line. Further investigation was conducted to assess determined there is a potential design build to meet that needs to be reviewed by design engineer. Sheet 3 shows 2" AV with a 1' foot of clearance over 12" pipe at Sta. 4+10 with approximately 1.5' of coverage whereas sheet 7 shows the same 2" AV at Sta. 3+96 with approximately 26" of coverage. Inspector allowed install of 12" DI pipe up to where coverage would not exceed the 60" per old design WIP-301. Resolution on completing the file is pending response from Engineering and SCVWA.
2	No	Golden Yarrow PW	DR-31PW - Line WC Zone 1B, Golden Yarrow, Sta. 3+77. San Hill installed 12" DI pipe heading south toward Magic Mountain PUMP. Crew used 12" Gull Flubber sure also gaskets and Ease on pipe lubricant for install. Crew stopped install at estimated Sta. 3+55. San Hill waiting on official response on RFI #13 to proceed with further install.
3	No	Golden Yarrow PW	DR-31PW - Line WC Zone 1B, Golden Yarrow, Sta. 3+45. Crewing Verification. 12" PW crossing over 18" SD.

Santa Clara Valley Water Agency Page 1 of 5 Printed On: Sep 21, 2023 at 03:02 PM PDT

**SCV WATER** Santa Clara Valley Water Agency  
27224 Buckwalter Canyon Road  
Santa Clara, California 95050  
P: +14082971800

Project: 190116I, 190117I FirePoint/San Hill -  
Mission Village Phase 2B-1 Magic Mountain  
Pony PW & RW,  
California

**Observation Field Directive #15: Unapproved Spools**

Origin	Status	Client
Created By: Darryl Ramos (Filipon Engineering)	Created	May 31, 2023
Assignee: Daniel Ayala (Bliss Construction)	Distribution:	Daryl Berenson (Hunsaker) Abel Rojas (Bliss Construction) Darryl Ramos (Filipon Engineering) Daniel Ayala (Bliss Construction) Richard Bickel (Bliss) Craig Toeller (FirePoint) Viktor Vo (Hunsaker) Mark Furtak (Filipon Engineering) Ricardo Medina (Bliss Construction) Jonathan Tokes (Hunsaker) Kenneth Tran (Hunsaker) Dustin Steiner (Filipon Engineering) Dannell Fordard (Santa Clara Valley Water Agency) Bob Brazer (FirePoint)
Notification Date: Jun 14, 2023	Priority:	High
Location: All Locations	Title:	
Due Date: Jun 9, 2023	Private:	Yes
Contributing Condition:	Contributing Behavior:	
Hazard:		
Spec Section:		
Description:		Bliss to remove unapproved spools from the Firepoint development.
Linked Drawings:		
Attachments:		




Santa Clara Valley Water Agency Page 1 of 2 Printed On: 09/22/2023 10:09 AM PDT

**SCV WATER** Santa Clara Valley Water Agency  
27224 Buckwalter Canyon Road  
Santa Clara, California 95050  
P: +14082971800

Project: 190115B, 190116I, 190117I, 190118B  
FirePoint/San Hill - Mission Village Phase 2B-1  
Golden Yarrow PW & RW, Platinum PW, Juniper  
PWI  
California

**RFI #15: 61105-31PW - Depth Conflict Line WC 12" PW / 2" AirVac (FD #37)**

Status	Open
To:	Jonathan Felba (Hunsaker) From: Mark French (San Hill) Daryl Berenson (Hunsaker)
Date Initiated:	Sep 20, 2023 Due Date: Sep 21, 2023
Location:	Golden Yarrow PW Project Stage: Course of Construction
Cost Impact:	TBD Schedule Impact: TBD
Spec Section:	Cost Code
Drawing Number:	Reference
Linked Drawings:	
Received From:	Mark French (San Hill)
Copies To:	Scott Anderson (San Hill), Daryl Berenson (Hunsaker), Richard Bickel (Bliss), Bob Brazer (FirePoint), Carmen Fordard (Santa Clara Valley Water Agency), Mark French (San Hill), Bob Furtak (Filipon Engineering), Raul Garcia (San Hill), Torrey Hernandez (San Hill), Spencer Hill (San Hill), Chao Marquez (San Hill), Jorge Neumann (San Hill), Jonathan Tokes (Hunsaker), Darryl Ramos (Filipon Engineering), Craig Toeller (FirePoint), Kenneth Tran (Hunsaker), Viktor Vo (Hunsaker), Ru Zhang (Bliss)
Activity:	
Question:	Question from Mark French San Hill on Wednesday, Sep 20, 2023 at 10:39 AM PDT Per SCVWA Inspection via Field Directive #37: "The SCVWA 60" dia WIP-301 man cover is 60" to Finish Surface. Inspection encountered cover to exceed the 60" roughly between Sta. 3+50 - 3+55. Further investigation into conflict was determined there is a potential design build to cover that needs to be reviewed by design engineer. Sheet 3 shows 2" AV with a 1' foot of clearance over 12" pipe at Sta. 4+10 with approximately 1.5' of coverage whereas sheet 7 shows the same 2" AV at Sta. 3+96 with approximately 26" of coverage. Contractor/Developer to submit RFI to Design Engineer for Clarification/Corrections."
Answering an Official Response:	
All Replies:	Response from Daryl Berenson Hunsaker on Wednesday, Sep 20, 2023 at 04:23 PM PDT The man was kept deep to avoid adding an extra air vac. This was a comment we received during 1st plan check. We also kept the line lower to avoid have a low point or less than 36" of cover at station 7+00 On sheet 7 of the PW plan we will update the elevation of the AV. On sheet 7 we will update the elevation of the RW meter per the attached profile of the RW meter. Attachments Golden Yarrow RW Meter Profile.pdf



# Organization

**PROCCORE** | G&E Construction | Alameda East 10000 | Project Tools | Home | Favorites

**PROJECT HOME**

**PROJECT TEAM**

Role	Name	Email	Office	Mobile
Mechanical Engineer	Gary Bell (Bell Excavation)	gbell@bellexcavation.com	(301) 827-8111	(301) 271-8001
Painter	Apex Paint (Zhan High School District)	apex_paint@earthlink.net	(510) 296-1722	(510) 258-9099
Project Manager	Jeff Kemper (Lansett Construction)	jkemp@lansettco.com	(204) 800-5404	(204) 938-9524
Superintendent	Adam Spivack (Spivack Const)	adam.spivack@spivackconst.com	(204) 825-7001	(204) 663-2445
Assistant Superintendent	Luke Wilson (Bentley Mechanical Systems)	lwilson@bentley-mech.com	(204) 825-7068	(204) 514-2668

**PROJECT OVERVIEW**

Overview	Overdue	Next 7 Days	17 Days	Total Open
RFIs	0	0	27	27
Schedule	28	0	0	28
Submittals	15	0	0	15
Inspections	0	0	13	13
Observations	0	10	0	10
Work List	16	0	0	16
Meetings	7	0	0	7

**PROCCORE** | G&E Construction | Alameda East 10000 | Project Tools | Home | Favorites

**Coordination Issues** | All Issues | Assigned to Me (3) | Response (0)

**Dashboard**

**Overview** | **Progress** | **Set in Court**

38 Issues

38 Issues

38 Issues

Search by number or title

File	Status	Priority	Assignee Company	Assignee	Date
38	Paid Issue	Open	PROCCORE Co.	Tyler T.	
37	Paid Issue	Open	PROCCORE Co.	Tyler T.	
36	RFP-SUB	Open	CONFORME Co.	PAUL R.	
35	Supplier Conflict	Ready for Review	High	All Included Co.	Stacy B.

**Supplier Conflict**

More options: Hide

Location: Level 1

Date Due: 5 / 10 / 2025

Priority: High

Assignee: Stacy Ferguson (All Included Construction)

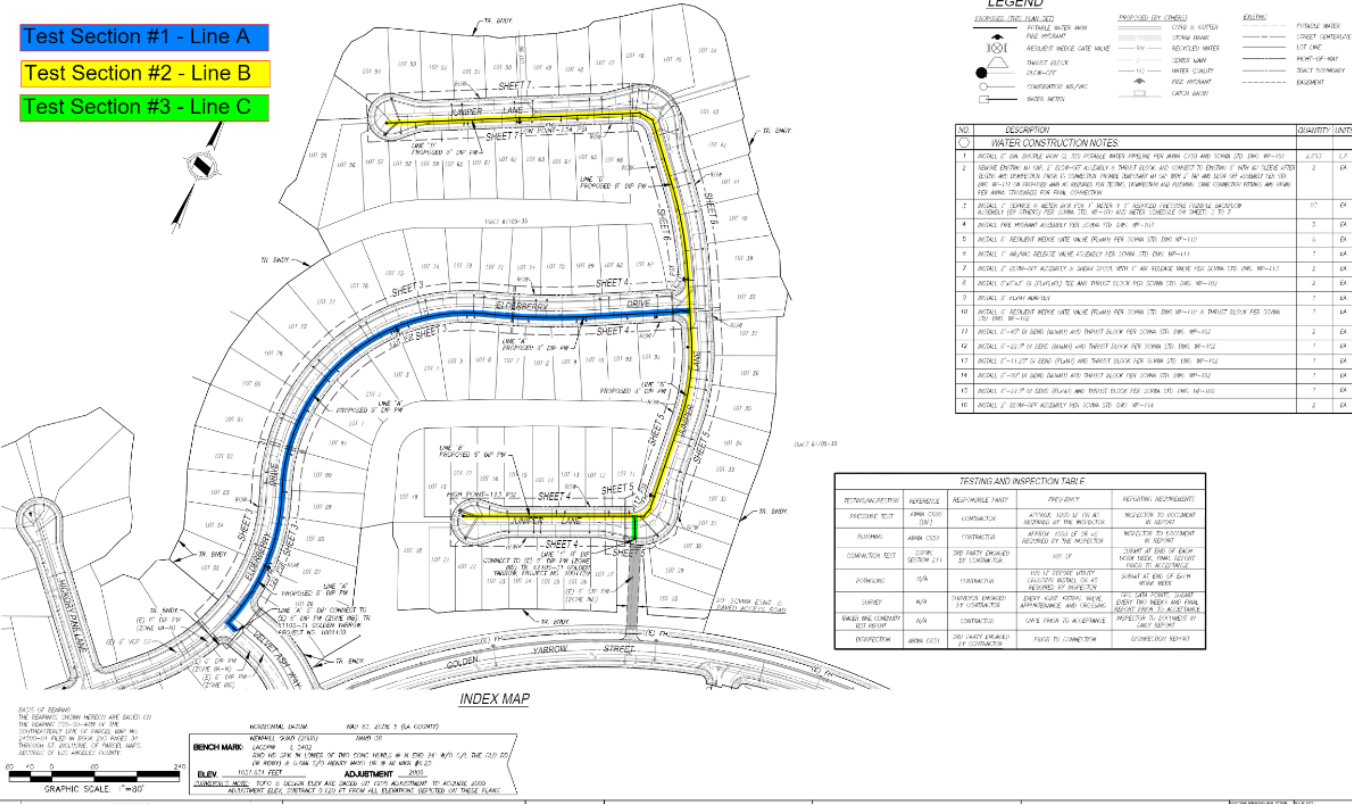
Trade: Fire Protection





# Accountability

- Test Section #1 - Line A
- Test Section #2 - Line B
- Test Section #3 - Line C



## SUBMITTAL INFORMATION

### Angle Ball Meter Valves - (BA43-444W-NL style)

**PACK JOINT FOR COPPER OR PLASTIC TUBING (CTS) INLET BY METER SWIVEL NUT OUTLET**

Sturdy stops allow 90° motion and are enclosed and protected. A snap ring locks the stem into the body of the valve. Padlock Wing for locking valve in closed position. Dual EPDM O-rings in the stem. Fluorocarbon-coated brass ball. Molded EPDM rubber seat with reinforcing ring supports the ball. Develed EPDM rubber gasket provides hydraulic seal. Anti-Friction Washer. Integral clamp contains machined grooves for axial restraint. Pack Joint Nut. Stainless steel screw activates clamp.

VALVE SIZE	SERVICE LINE SIZE INLET	METER SIZE OUTLET	LENGTH	HEIGHT	APPROX. Wt. Lbs	PART NUMBER	✓ SUBMITTED ITEM(S)
1"	1"	1"	1.63/54"	2.7/32"	2.5	BA43-444W-NL	

Note: Ford recommends using insert stiffeners with plastic pipe or tubing.

### FEATURES

- All brass that comes in contact with potable water conforms to AWWA Standard C800 (ASTM B584, UNS C89833)
- The product has the letters "NL" cast into the main body for lead-free identification
- Certified to NSF/ANSI Standard 61 and NSF/ANSI Standard 372 where applicable
- Brass components that do not come in contact with potable water conform to AWWA Standard C800 (ASTM B62 and ASTM B584, UNS C83600, 85-5-5-5)
- Ends are integral or secured with adhesive to prevent unintentional disassembly
- Hole for attaching handle is provided in tee-head
- 300 PSI working pressure
- Padlock wing for locking valve in closed position
- Conforms to AWWA C700 for meter threads

Note: Recommended for inlet side shut-off  
Optional full 360° tee-head rotation. Insert "R" into part number

# Consistency and Uniformity

- Engineering consistently reviews and updates Procore SOP's annually.
- The uniformity of this practice not only helps developers and contractors with future planning of projects, but it also helps them maintain their desired schedule.
- All Agency employees are following the same Procore processes and tools for consistency with all developer and CIP projects.
- Procore assists with establishing quality control measures for all new installations to meet Agency Specifications, along with quality assurance to our Agency operations. This assists us to help provide our community with clean, reliable, quality water at a reasonable cost.



# Helping to provide our community with clean and reliable high-quality water.

