

## **ITEM 6.2**


**CONSIDER AND DETERMINE TIMING FOR LOS  
ANGELES COUNTY ELECTION OFFICE  
RECOMMENDED MINOR BOUNDARY ADJUSTMENT  
BETWEEN DIVISIONS 1 AND 2**

**MAY 13, 2024**

# Santa Clarita Valley Water Agency - Electoral Divisions

Current Boundaries based on Boundary Descriptions

**Santa Clarita Valley Water Agency**




0 1 2 Miles

This map and associated data are provided without any warranty of any kind. Any resale of this information is prohibited.

<https://www.yourscvwater.com>

(R) Path, X:\Production\PowerPoint\April 2024\PowerPoint\SCV Water Electoral Divisions\SCV Water Electoral Divisions.aprx  
Date Expired: 4/30/2024 3:02 PM

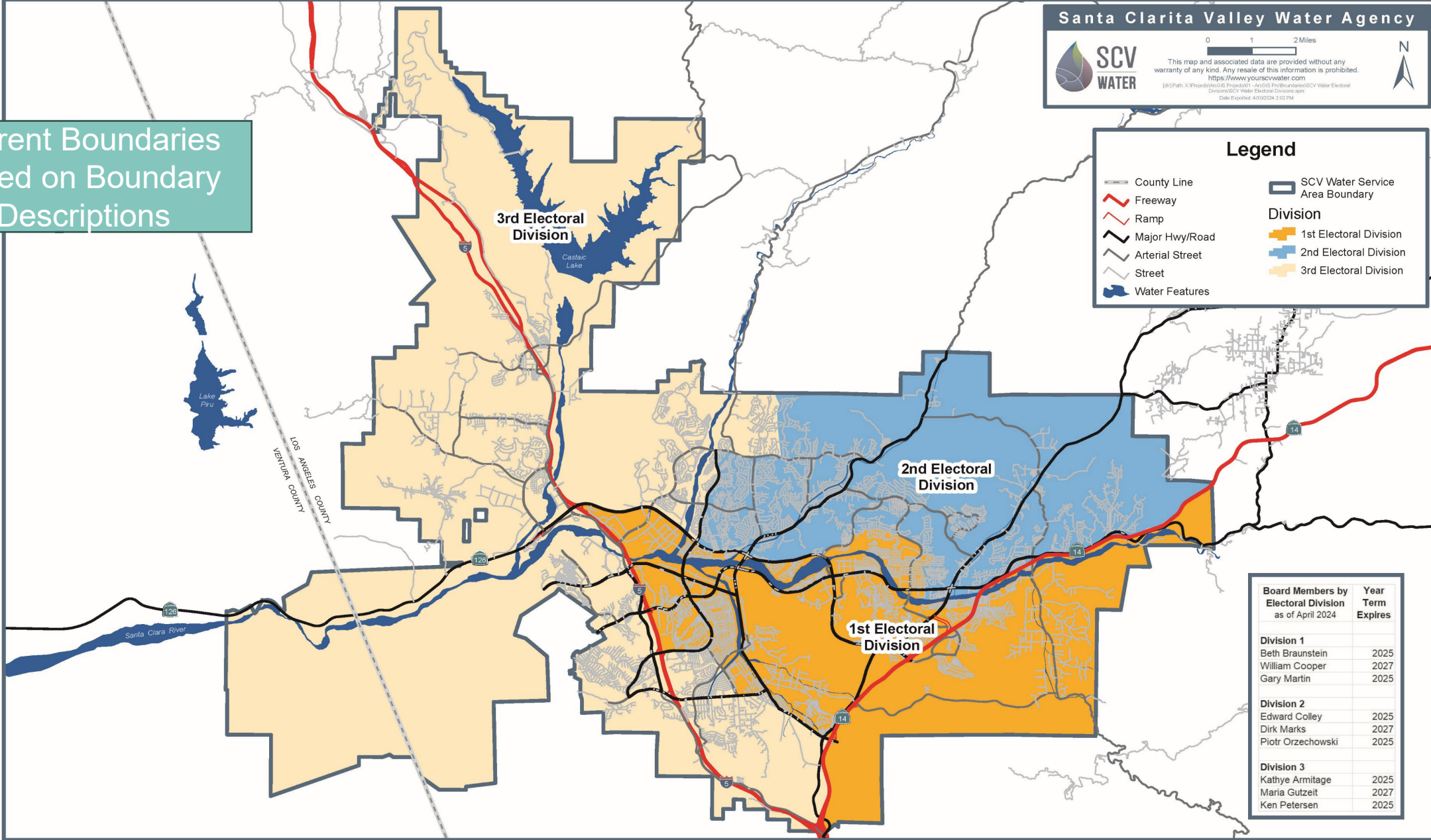


**Legend**

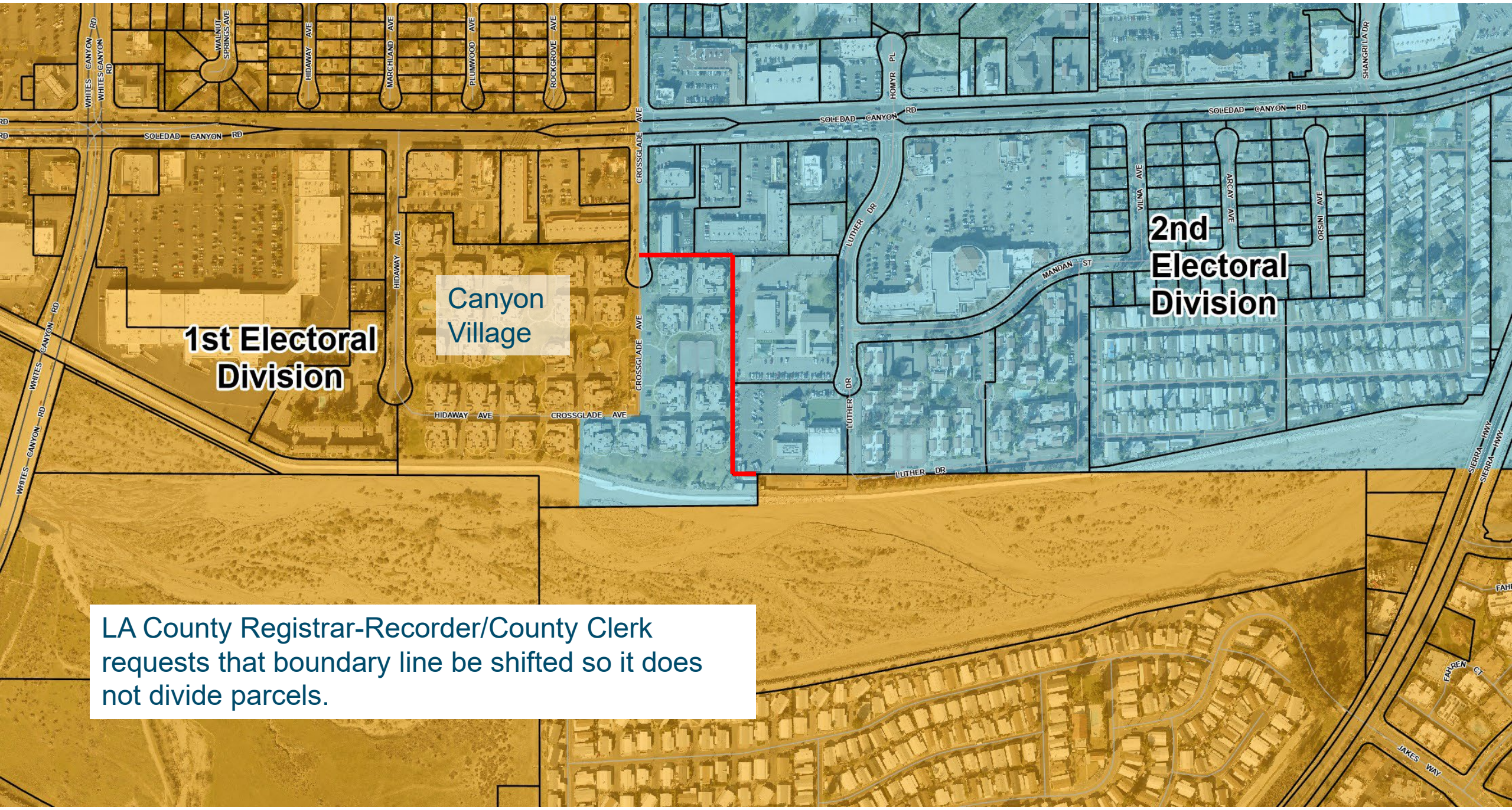
- County Line
- Freeway
- Ramp
- Major Hwy/Road
- Arterial Street
- Street
- Water Features
- SCV Water Service Area Boundary

**Division**

- 1st Electoral Division
- 2nd Electoral Division
- 3rd Electoral Division



| Board Members by Electoral Division as of April 2024 | Year Term Expires |
|--|-------------------|
| <b>Division 1</b>                                    |                   |
| Beth Braunstein                                      | 2025              |
| William Cooper                                       | 2027              |
| Gary Martin  | 2025              |
| <b>Division 2</b>                                    |                   |
| Edward Colley  | 2025              |
| Dirk Marks   | 2027              |
| Piotr Orzechowski                                    | 2025              |
| <b>Division 3</b>                                    |                   |
| Kathy Armitage                                       | 2025              |
| Maria Gutzeit  | 2027              |
| Ken Petersen   | 2025              |

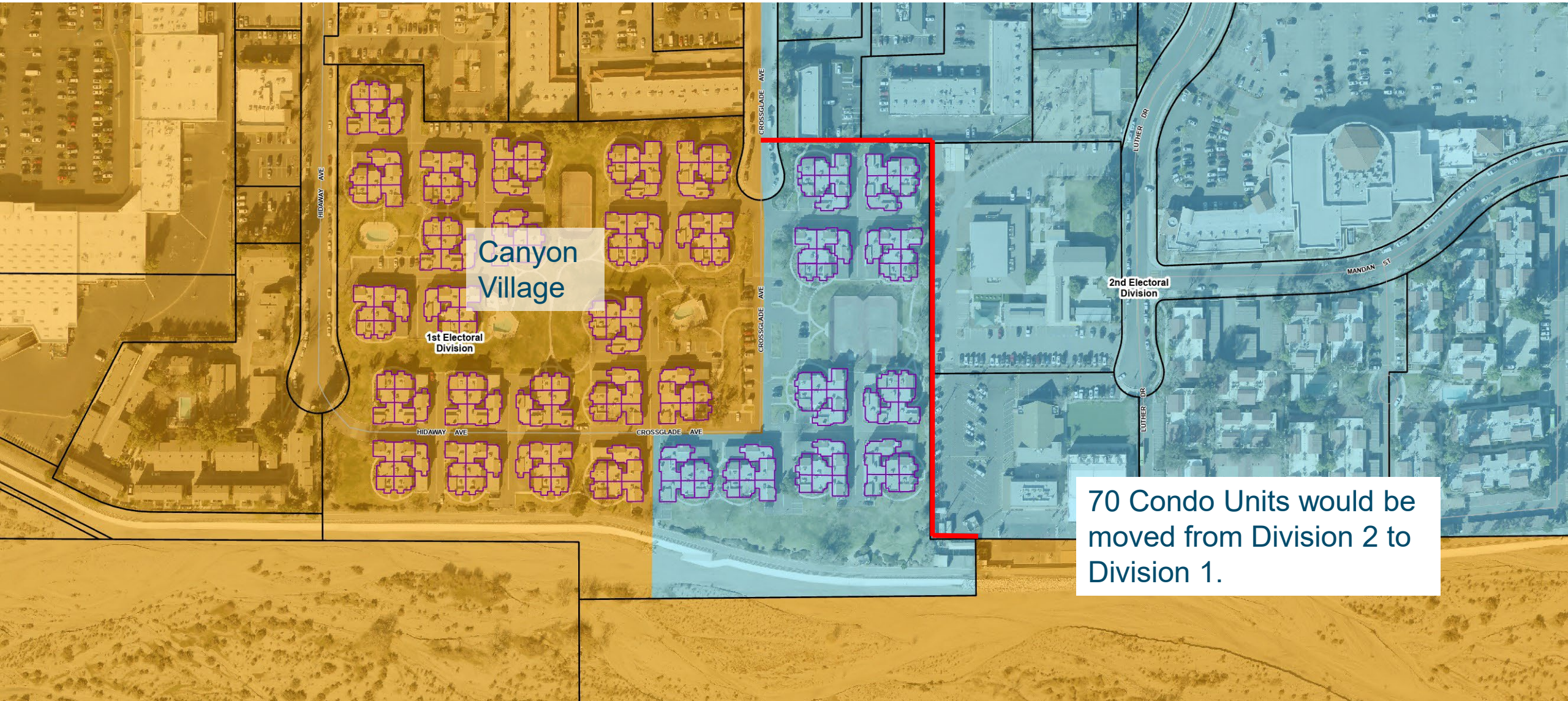


**1st Electoral Division**

Canyon Village

**2nd Electoral Division**

LA County Registrar-Recorder/County Clerk requests that boundary line be shifted so it does not divide parcels.



# Canyon Village

1st Electoral Division

2nd Electoral Division

70 Condo Units would be moved from Division 2 to Division 1.

Missing Golden Valley Road on Consultant's map. All of Five Knolls' roads are missing.

Galloway  
SFR-Detached Condos  
114 or 140 condo units  
were in Division 2.

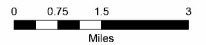
Galloway  
Sits below Golden Valley Road.



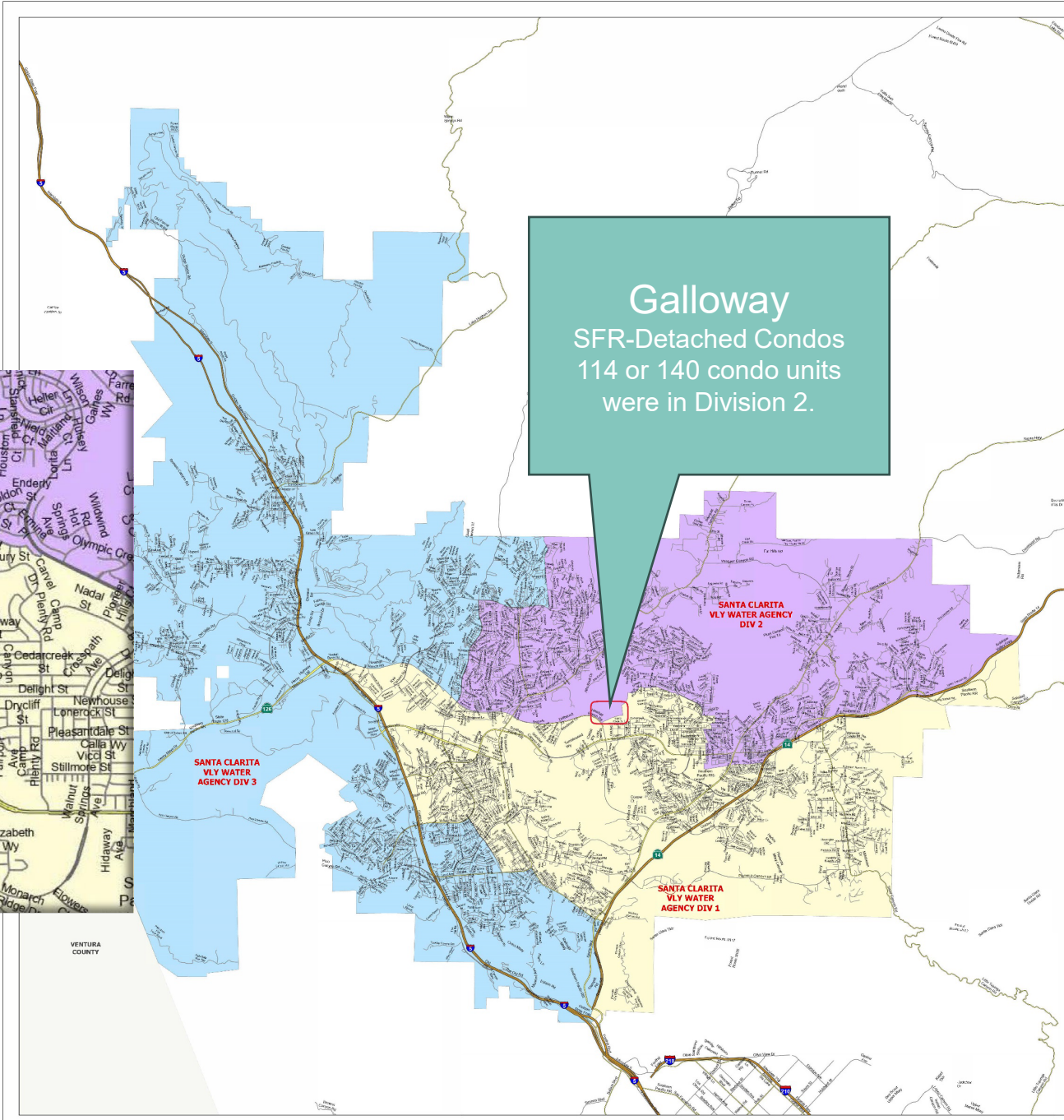
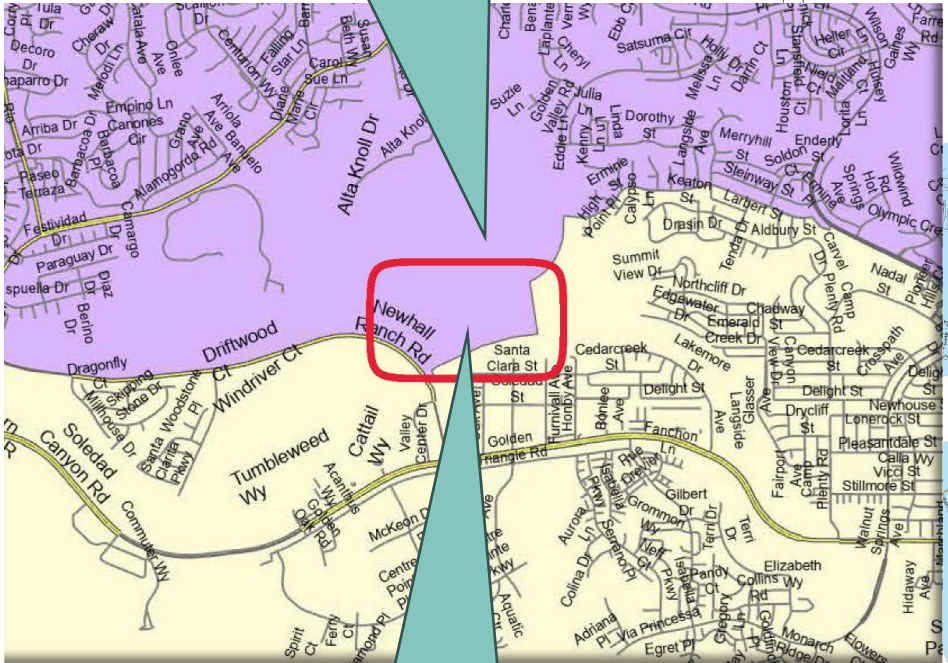
LOS ANGELES COUNTY  
REGISTRAR-RECORDER/  
COUNTY CLERK  
SANTA CLARITA VALLEY WATER AGENCY

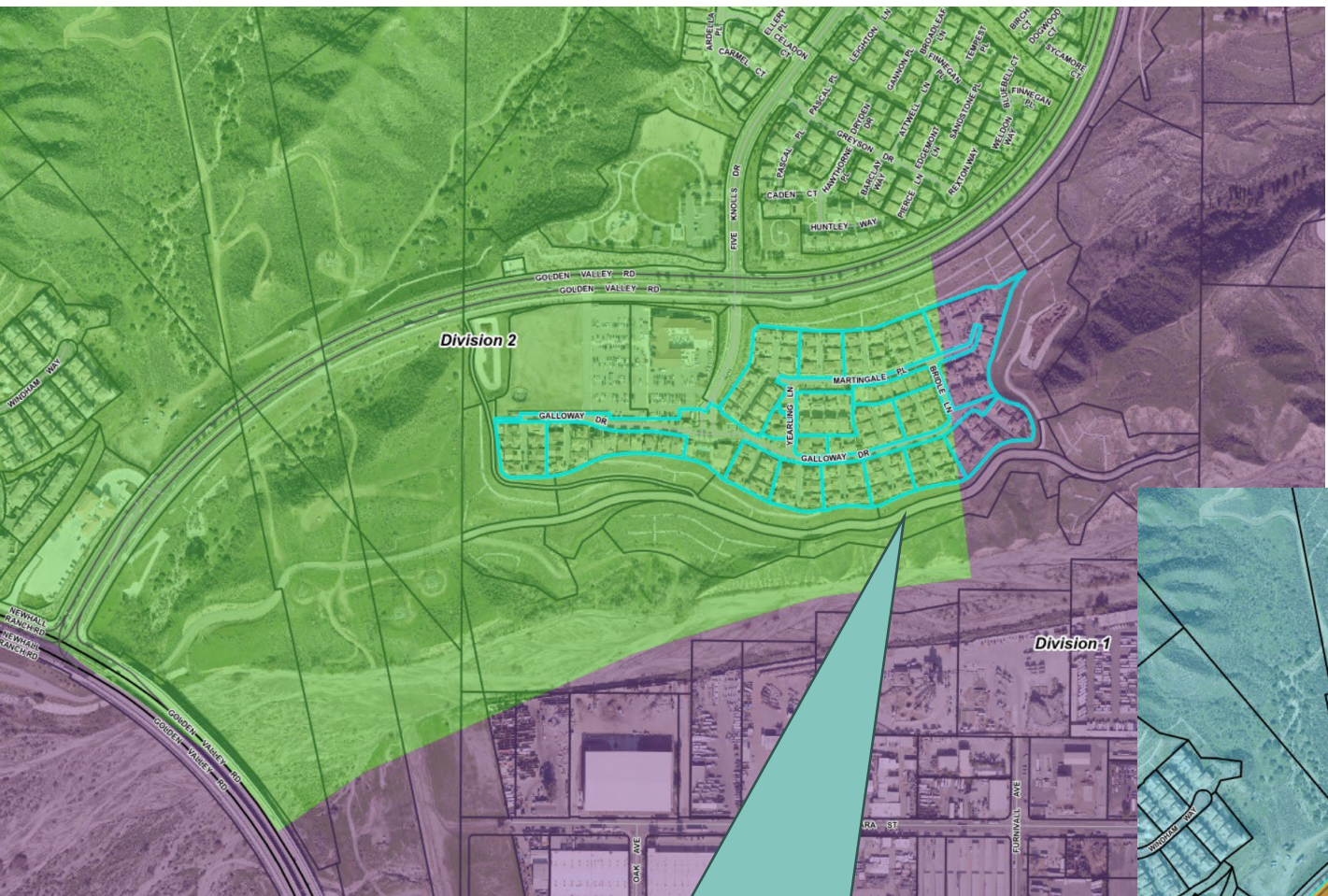


- LEGEND**
- STREETS**
- PRIMARY
  - HIGHWAY
  - FREEWAY
  - SECONDARY
  - MINOR
- Name**
- SANTA CLARITA VLY WATER AGENCY DIV 1
  - SANTA CLARITA VLY WATER AGENCY DIV 2
  - SANTA CLARITA VLY WATER AGENCY DIV 3



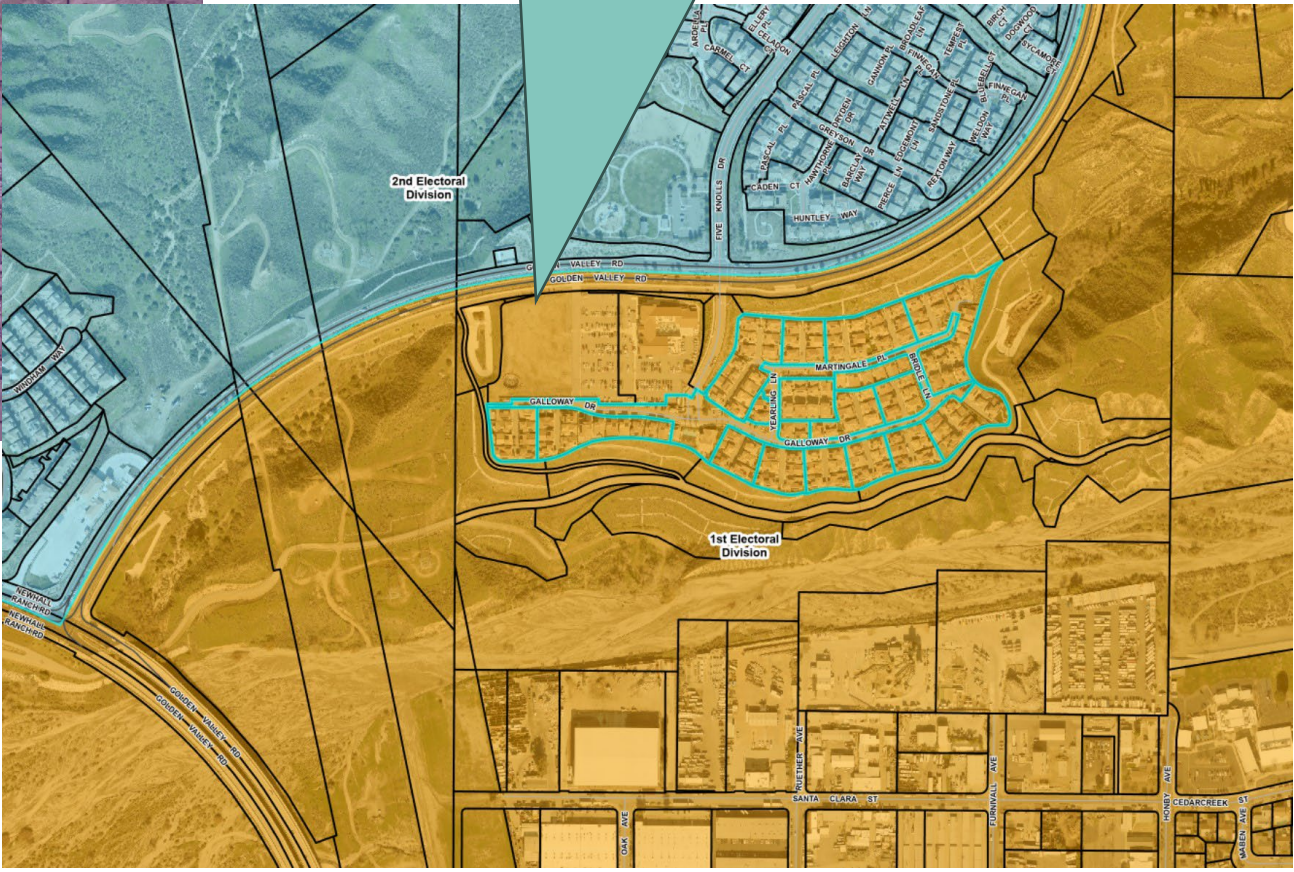
Disclaimer: this map is subject to change without notice.  
 Conducted by: Registrar-Recorder/County Clerk - GIS Section  
 Kern County, California  
 File No: 1542\_462\_2471  
 Created on: Monday, April 15, 2024





Galloway with boundary running through stacked parcels

All of Galloway within Division 1 with the correct boundary as stated in the Descriptions.





Boundary cutting through parcels in Santa Clara Riverbed

Boundary cleaned up to follow parcel boundaries in the riverbed. No homes affected.





Boundary cutting through parcel  
one parcel on Ermine Pl.

Boundary cleaned up

