

REVISED

ITEM NO.
7

SCV WATER EMERGENCY RESPONSE PRESENTATION



Keith Abercrombie
Chief Operating Officer

**Regular Board Meeting
April 15, 2025**

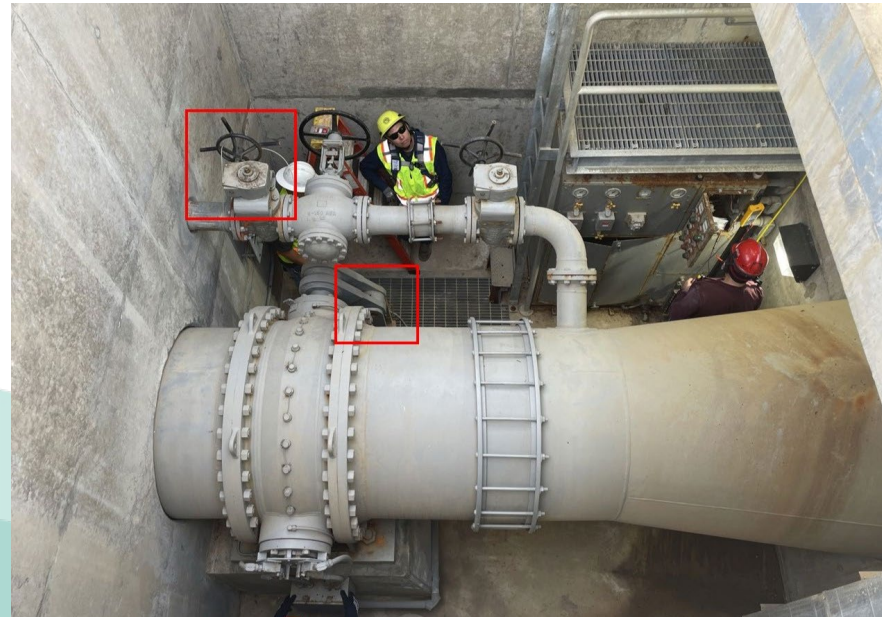


JANUARY EVENTS

- PLANNED DWR SHUTDOWN
- HIGH WIND EVENT
- HUGHES WILDFIRE

DWR SHUTDOWN

- PRE-PLANNING
- DURING SHUTDOWN
- POST SHUTDOWN



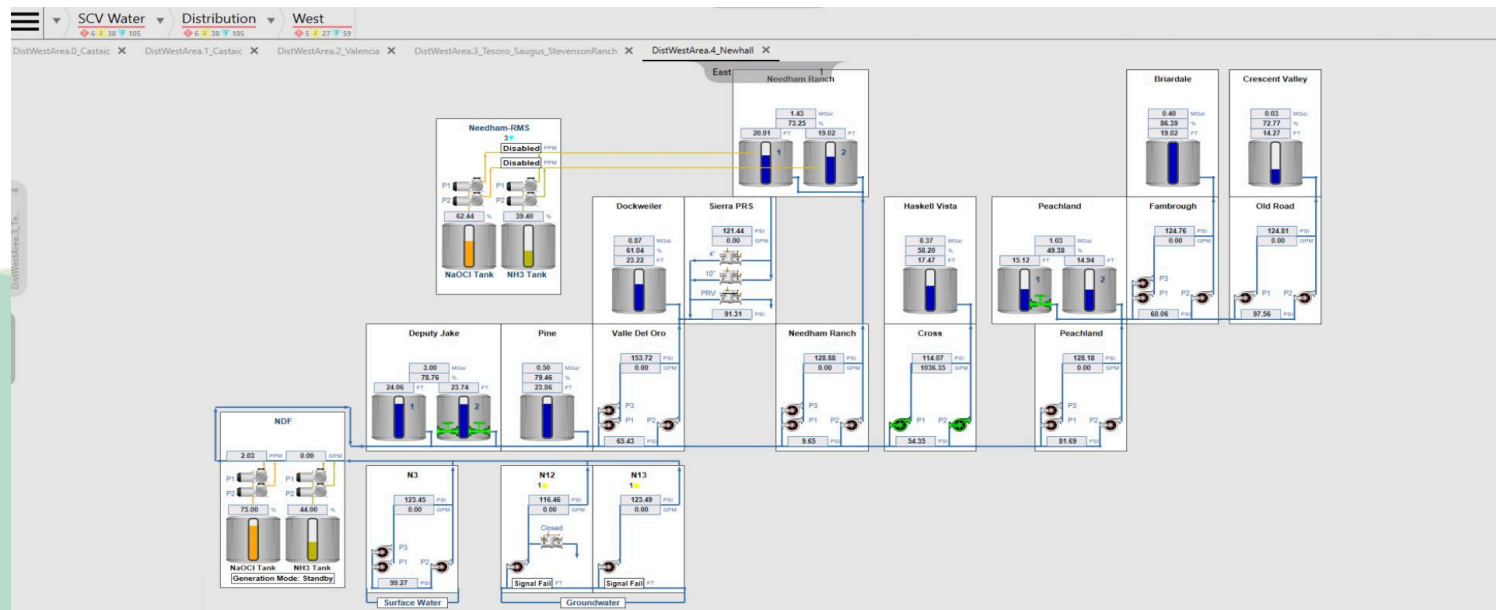
PRE-PLANNING DWR SHUTDOWN

- AVAILABLE STORAGE
- GROUNDWATER RESOURCES
- COMMUNITY OUTREACH



OPERATIONS DURING DWR SHUTDOWN

- SCADA Control Center – Staffed 24/7
- Fine Tuning of Pumping Operations
- Continued Customer Engagement



POST DWR SHUTDOWN

- COMMUNITY RESPONSE
- RETURN TO NORMAL OPERATIONS

HIGH WIND EVENT

- PSPS ACTIVITY
- STAFF RESPONSE

PUBLIC SAFETY POWER SHUTOFFS (PSPS)

- Notifications – 1/3 onward
- Shutoffs – 1/6 – 1/10
 - Tanksites (10)
 - Booster Stations (9)
 - Wells (none)
 - ESFP (1/8 – 1/10, 1/13 - 1/15)
 - JGWTP (none)
- All Clear – 1/16



EMERGENCY GENERATORS



180 – 600 kW



Stationary



Small Portable

HUGHES WILDFIRE

- INITIAL RESPONSE
- DOC ACTIVATION
- OTHER ACTIONS



SUPPORTING FIREFIGHTING EFFORTS

- Dip Tank at JGWTP
- Helipads at Sagecrest Circle, Valley Creek and Avenida Sierra Madre 1 & 2 Tanks
- Continued Coordination with FD



MUTUAL AID

- California Water/Wastewater Agency Response Network (CalWARN)
- SCV Water was prepared to lend aid in response to the Eaton Fire

RESOURCES FOR RESIDENTS

- READY! SET! GO!
 - www.fire.lacounty.gov/rsg/

READY! SET! GO!



READY!

Create and maintain defensible space and harden your home against flying embers.

SET!

Prepare your family and home ahead of time for the possibility of having to evacuate.

GO!

By leaving early, you will give your family the best chance of surviving a wildfire.

QUESTIONS?

