

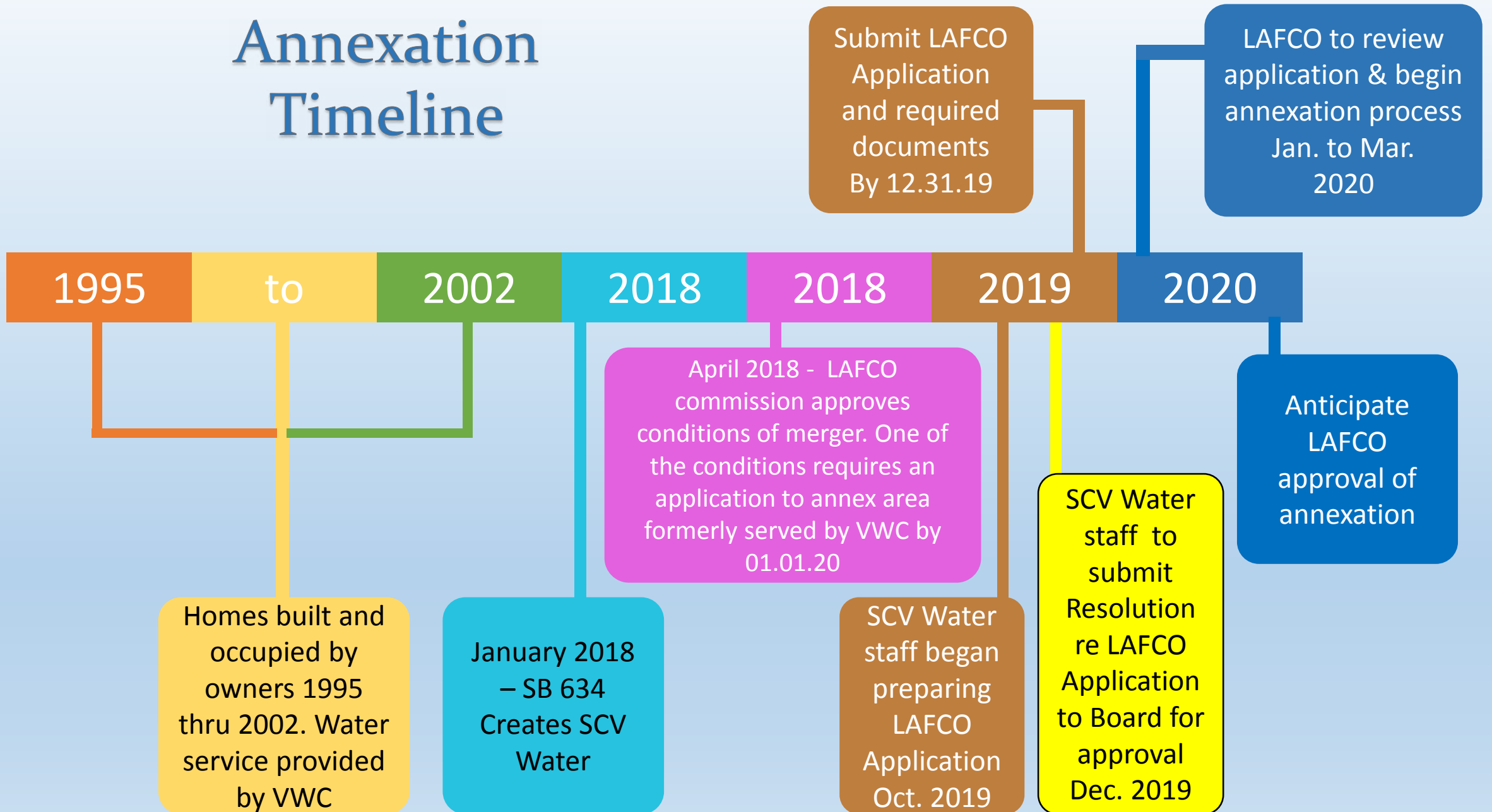


# LAFCO Application for Annexation of Properties Formerly Served by the Valencia Water Company

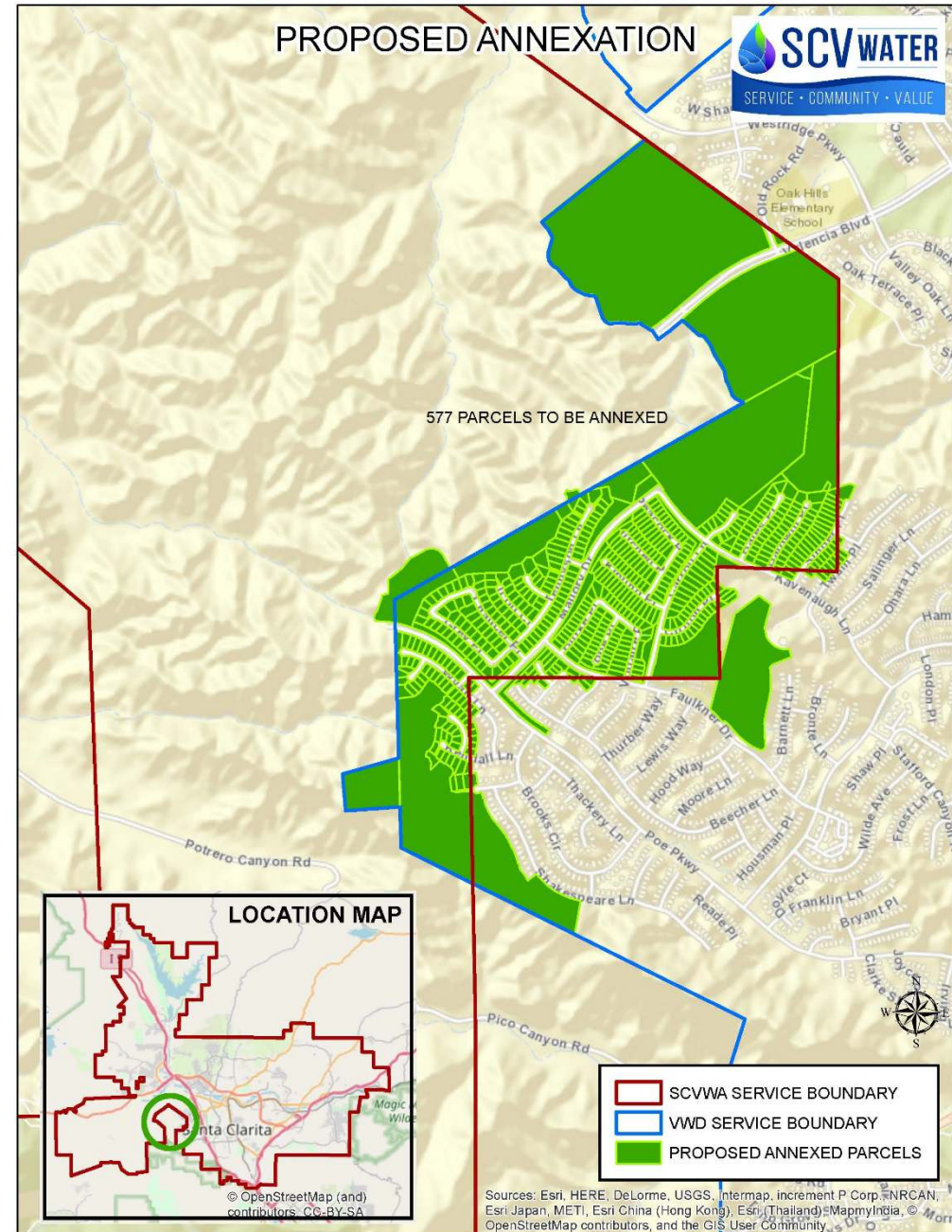
SCVWA Board Meeting  
December 17, 2019



# Annexation Timeline



# Proposed Annexation and Sphere of Influence Location





# Property Description

577 Parcels @ just over 343 total acres:

- ❖ 546 Single Family Homes
- ❖ 6 Homeowners Associations
- ❖ Schools
- ❖ Landscape Maintenance Districts
- ❖ Utility Facilities (Tank and Debris Basins)

32 of the 577 Parcels currently pay  
required ad valorem taxes

# Recommendation

Adopt a resolution of application requesting LAFCO to initiate proceedings for annexation and sphere of influence amendment for that specific geographic area formerly served by the Valencia Water Company :

- ❖ Adopts CEQA findings
- ❖ Authorizes General Manager to direct staff to submit LAFCO Application