



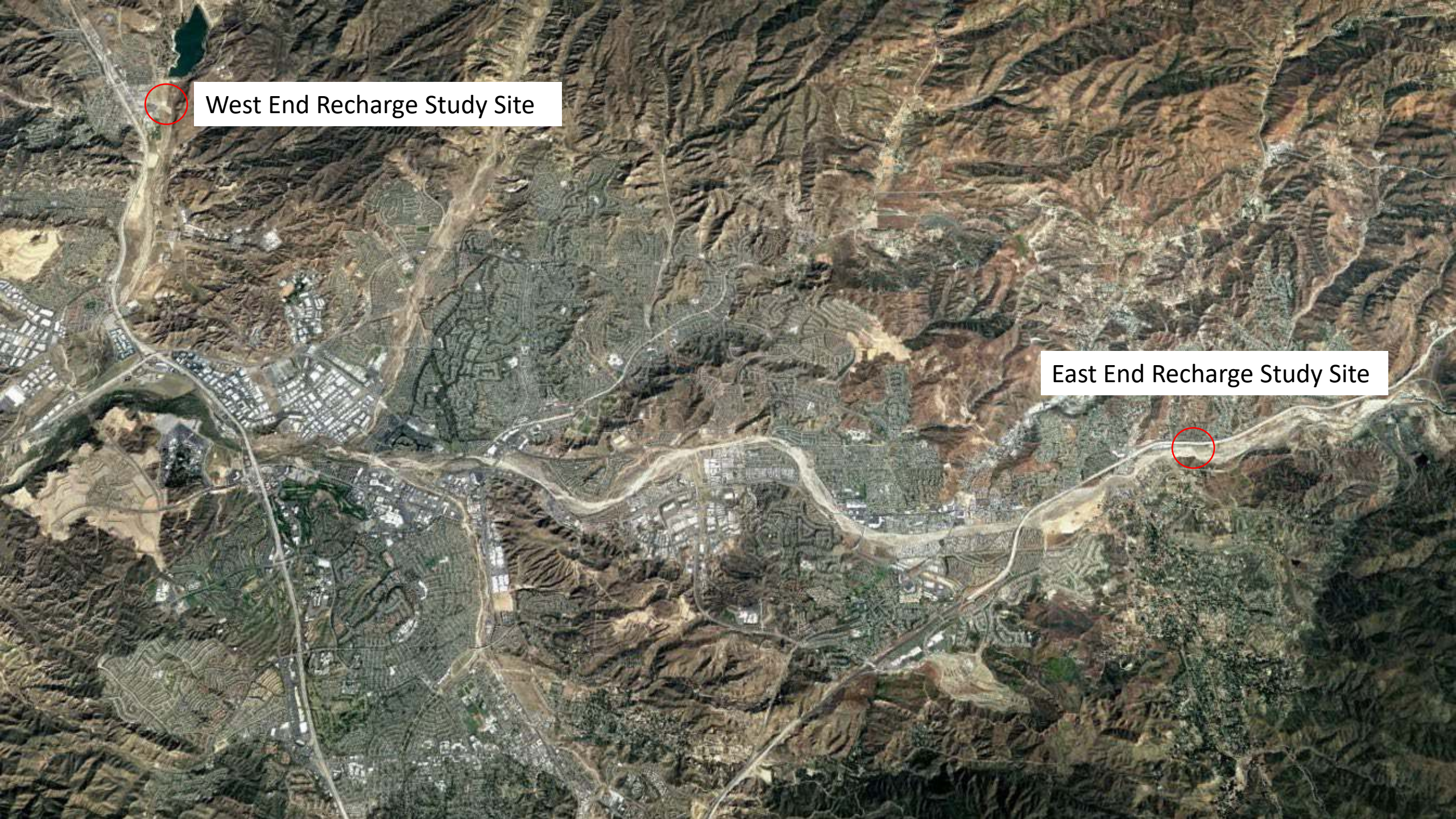
# Status of Efforts Relating to Groundwater Spreading Pilot Program

Water Resources and Watershed Committee

August 11, 2021

Item 2.2





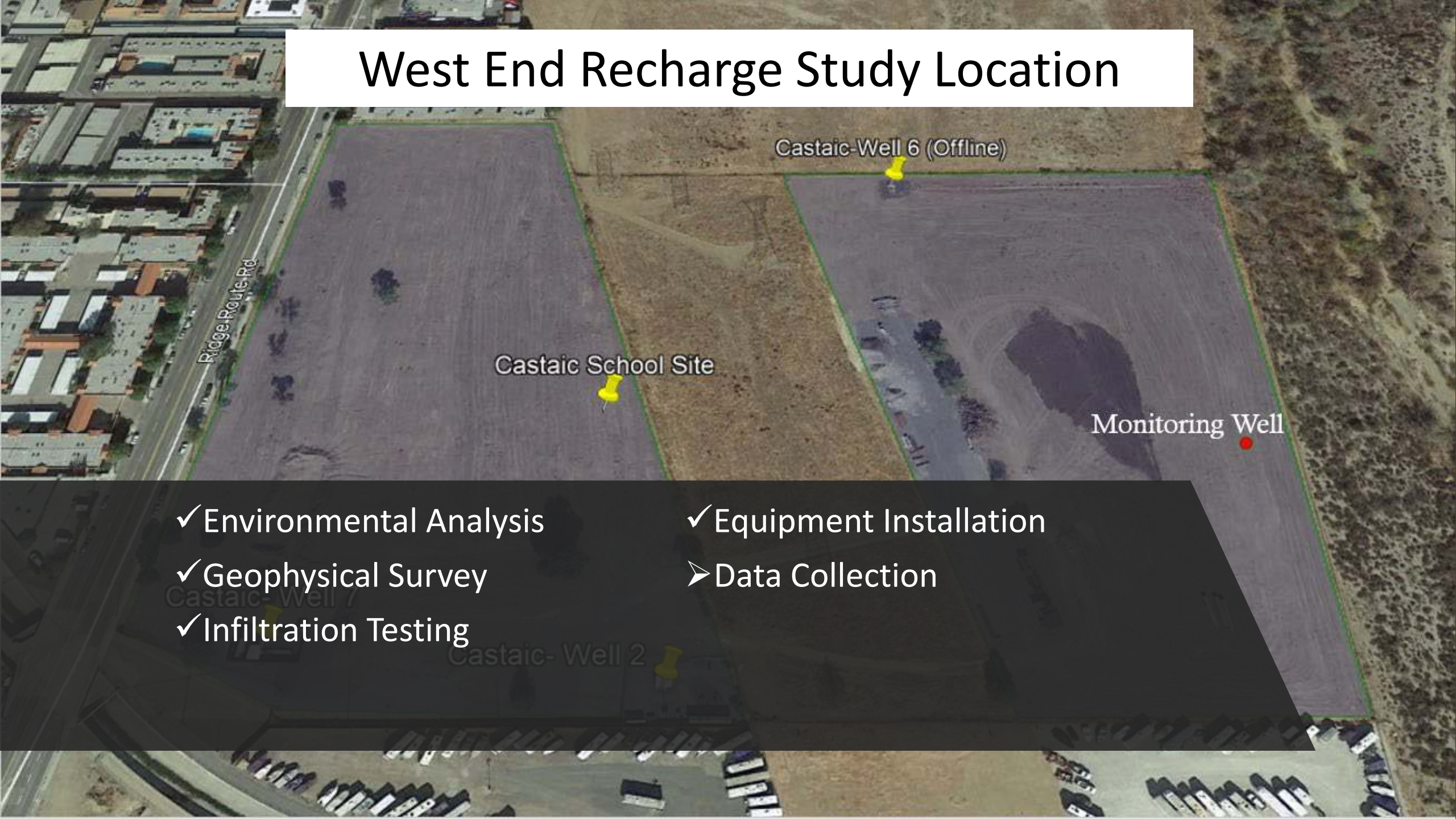
West End Recharge Study Site



East End Recharge Study Site



# West End Recharge Study Location

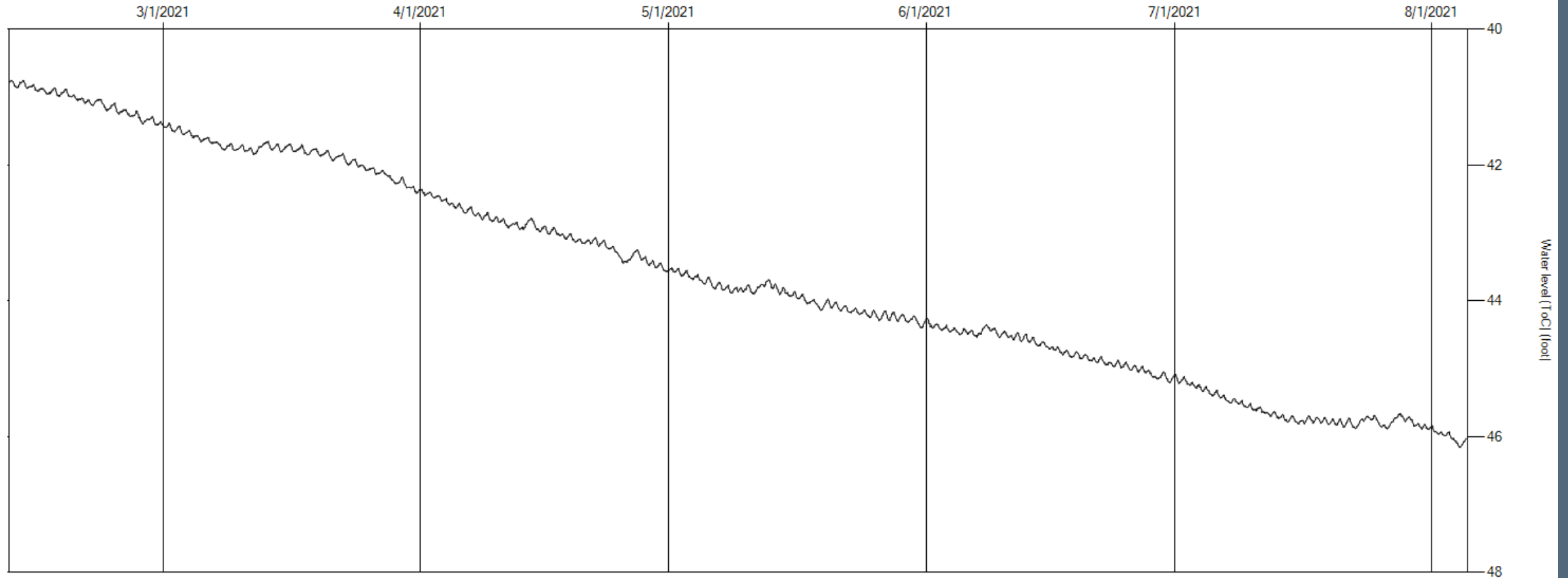


- ✓ Environmental Analysis
- ✓ Geophysical Survey
- ✓ Infiltration Testing

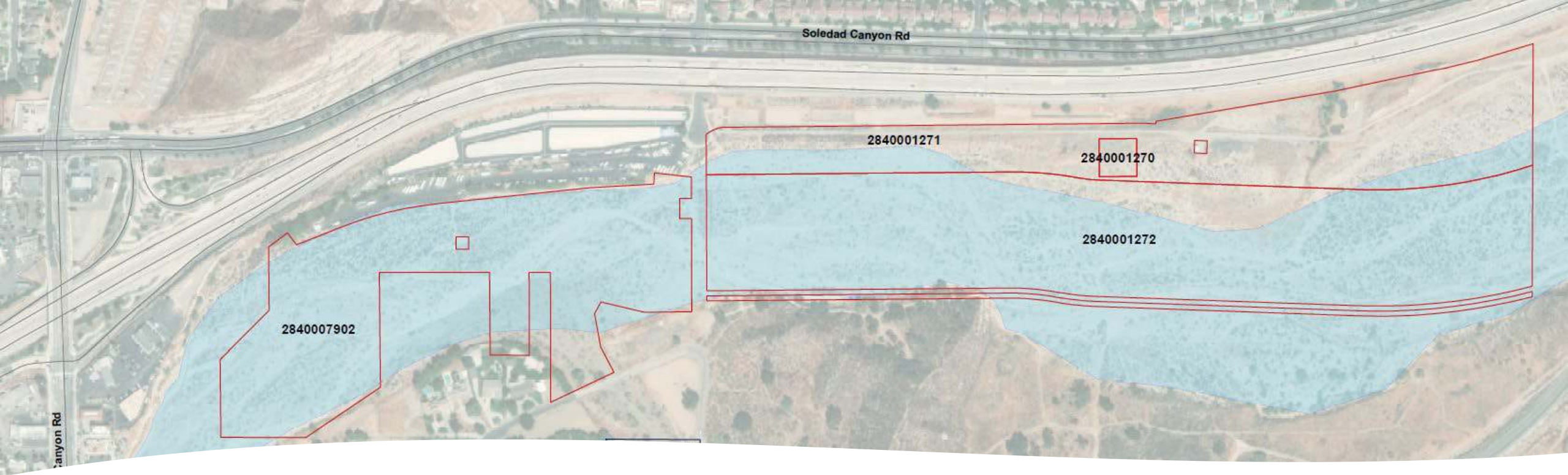
- ✓ Equipment Installation
- Data Collection

# Castaic Monitoring Well

VEI\_CC201 - CC201 - [2/10/2021 10:00:00 AM - 8/5/2021 6:00:00 AM]







## East End Recharge Study Location

- ✓ Site Walk and Access Evaluation
- Environmental Assessment
- Site Access Agreement – Available Early September
- Geophysical Survey
- Infiltration Testing
- Borehole Testing





- Draft Environmental Assessment Available
  - Five former LUST cleanup sites identified downstream of proposed recharge areas
  - No substantial risk to proposed recharge sites based on available information
  - Follow-up with the Regional Board





Questions?

---