



# WATER CONSERVATION

Program Updates

Water Resources and Watershed Committee  
February 10, 2021  
Item No. 4.1

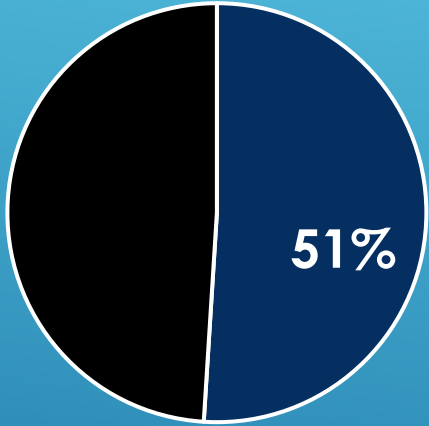
- ▶ **Programmatic Updates**
  - ▶ Residential
  - ▶ Commercial/Industrial/Institutional
  - ▶ Landscape
- ▶ **Conservation Performance (Compared to SBx7-7 20 by 2020)**
- ▶ **Transition to the Water Conservation Long-Term Framework**

# CONSERVATION PROGRAM UPDATES



# Residential Programs (YTD FY 19/20 v. 20/21 (July-January))

Percent of Consumption



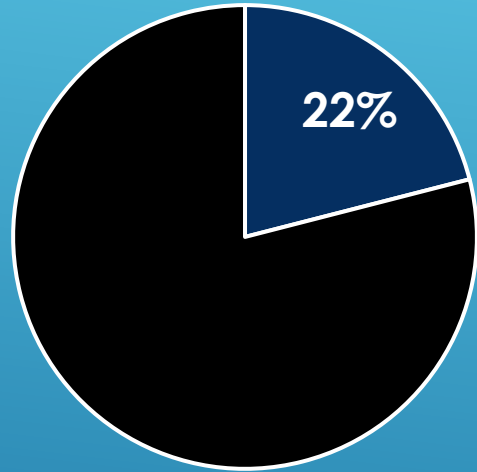
Period	Home Check Ups	Kits	Water SMART Workshop	Smart Controller (Rebates, Stations)	Lawn Replacement (Projects, SF)	Pool Cover Rebates	HELP Rebates	Water Use Notices (HCL/WASOP, LAL/Call)	“How to” Videos
FY 19/20 YTD Total	211	55	0	176/981	3/2,346	11	12	6,229	99
FY 20/21 YTD Total	9	33	196	163/956	5/5,697	21	11	497	99



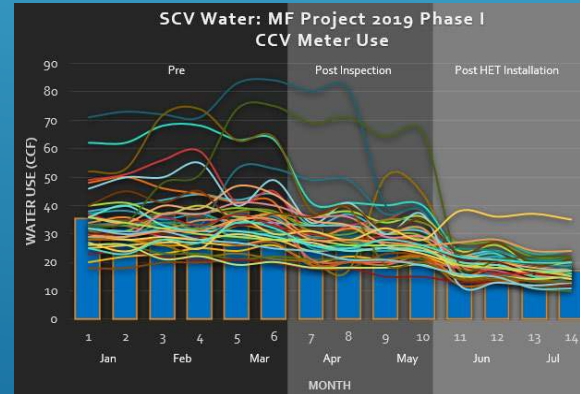
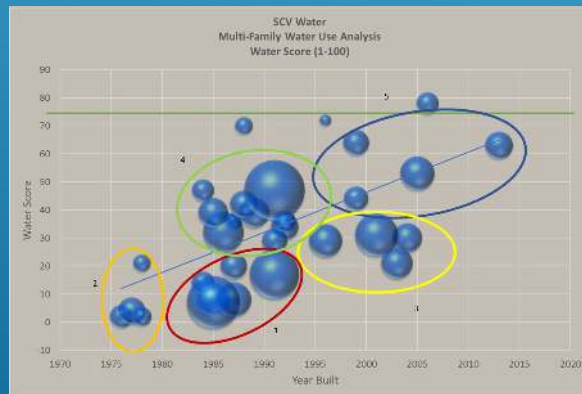
# PROGRAMMATIC UPDATES

# Commercial/Industrial/Institutional Programs

Percent of Consumption



Period	Projects	Unit Surveys	Showerhead Installations	Kitchen Aerator Installations	Bathroom Aerator Installations	Toilet Flappers	Irrigation Inspections (Zones)	HET and UHET Rebates
FY 19/20 YTD Total	1	1,529	871	196	1,007	16	173	0
FY 20/21 YTD Total	1	0	0	0	0	0	0	2,165

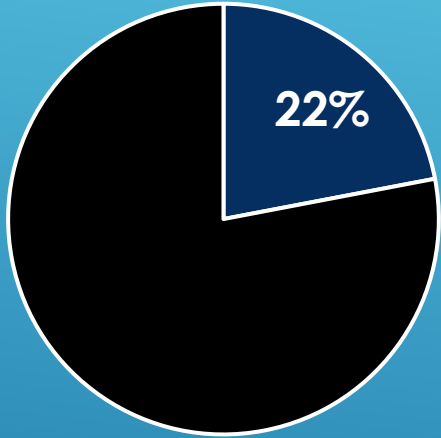


# PROGRAMMATIC UPDATES



# Landscape Programs

Percent of Consumption



Period	Smart Controllers (Rebates, Stations)	Turf Conversion (Projects, sf)	HELP – DRIP (Rebates, sf)	HELP – PR (PRB, MPR)	Irrigation Check-Ups (Projects/Zones)
FY 19/20 YTD Total	0/0	11/187,970	3/40,824	323/2,069	3/306
FY 20/21 YTD Total	3/386	3/31,571	1/17,230	0/0	0/0

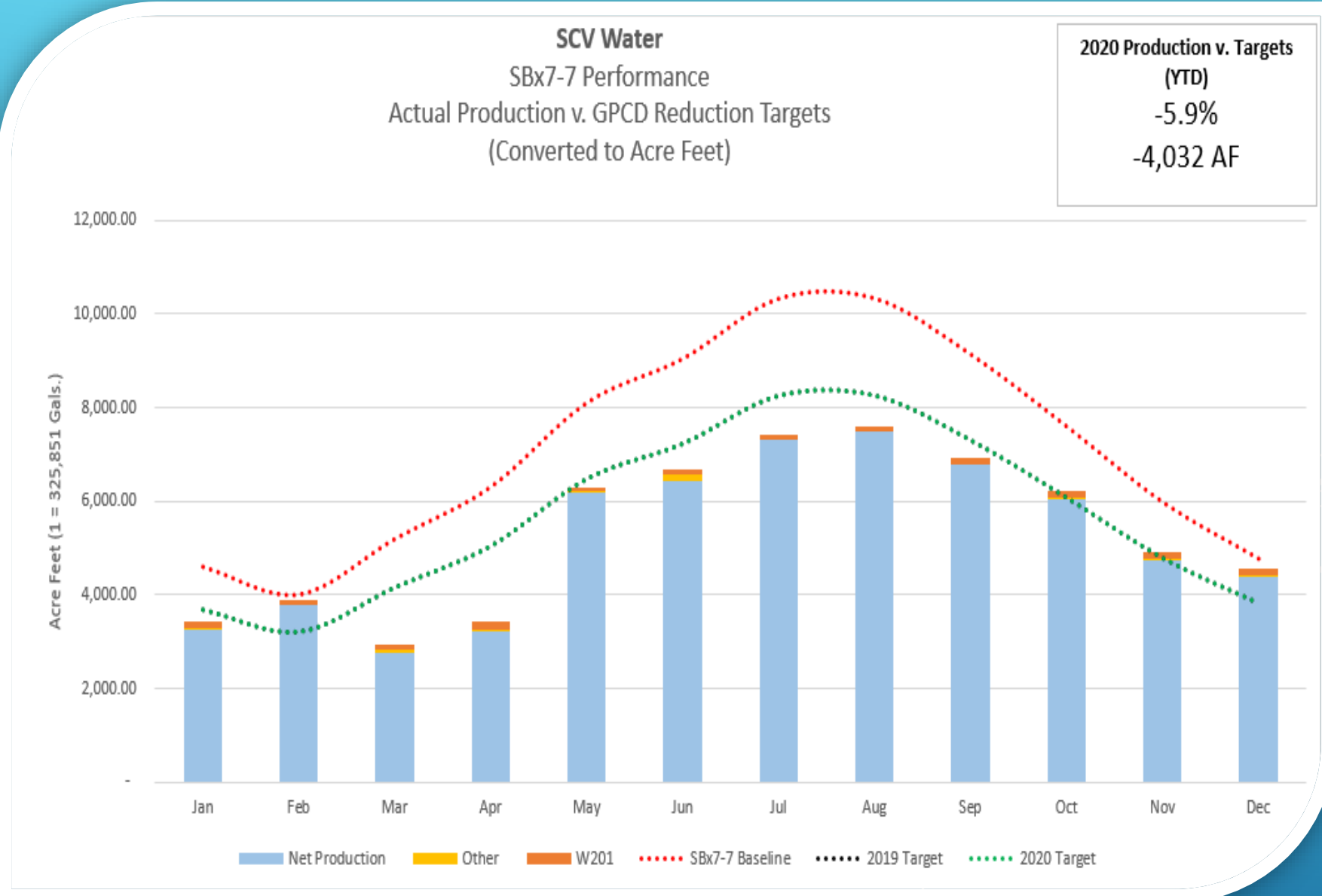


# PROGRAMMATIC UPDATES

# CONSERVATION PERFORMANCE (v. SBX7-7 COMPLIANCE TARGET)



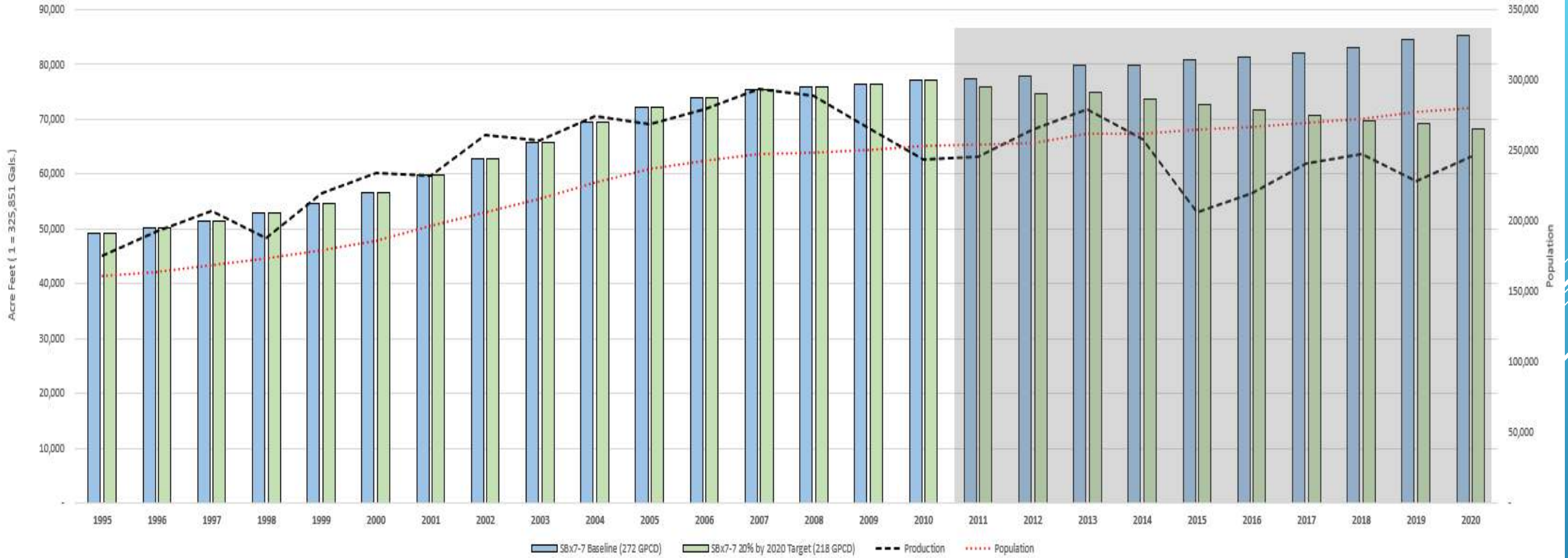
Month	Diff. AF	Diff. %	Cum. Diff. %
Jan	-274	-6.7%	-7%
Feb	666	20.8%	6%
Mar	-1,202	-28.9%	-7%
Apr	-1,630	-32.3%	-13%
May	-182	-6.9%	-12%
Jun	-570	-7.7%	-11%
July	-851	-10.3%	-11%
Aug	-674	-8.1%	-10%
Sep	-372	-2.8%	-9%
Oct	143	2.4%	-8%
Nov	143	3.0%	-7%
Dec	744	20%	-6%
<b>Total</b>	<b>-4,032</b>	<b>-</b>	<b>-6%</b>



\*Results based on draft analysis.

# CONSERVATION PERFORMANCE (v. SBX7-7)

SCV Water  
Annual Production v. Baseline and SBX7-7 20% by 2020 Requirement  
(Including Actual and Estimated Population)



\*Results based on draft analysis.

# CONSERVATION PERFORMANCE (v. SBX7-7)



- ▶ **Water Conservation Program Highlights (2011-2020)**
  - ▶ **SBx7-7 20% Reduction in GPCD by 2020**
    - ▶ Actual GPCD Reduction ~25%
    - ▶ Estimated Gallons Saved ~61 Billion Gallons (185,739 AF)
  - ▶ **Water Efficiency Program**
    - ▶ Residential
    - ▶ Commercial
    - ▶ Landscape
  - ▶ **Community Education and Engagement Initiatives**
  - ▶ **2020 EPA WaterSense Excellence Award**



CONSERVATION PERFORMANCE (v. SBX7-7)

# TRANSITION TO THE WATER CONSERVATION LONG-TERM FRAMEWORK



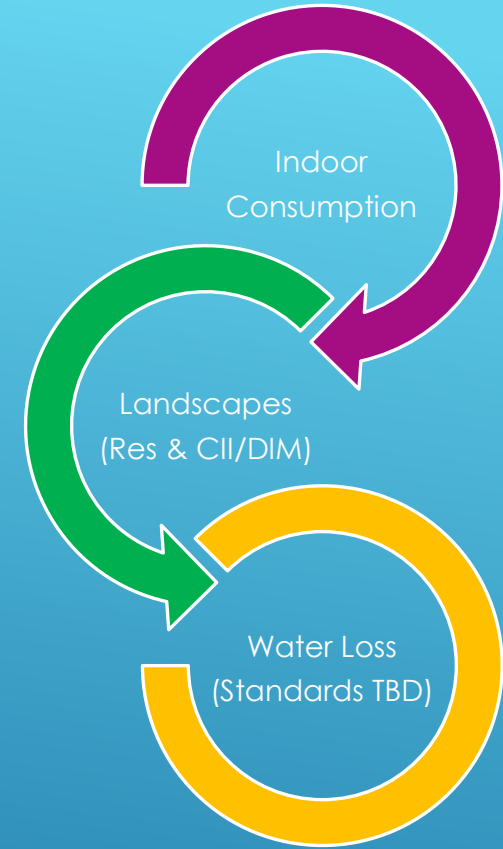
## Water Conservation Long-Term Framework

- ▶ Establishes the next phase of water efficiency for the State of California
- ▶ State to develop guidance on Water Shortage & Drought Contingency Plans
- ▶ Establishes Urban Water Use Objective (Beginning 2022)
- ▶ Annual Reporting (Actual Water Use v Urban Water Use Objective)
- ▶ Estimated Impact for SCV Water – Additional 5-10% Savings (Compared to 20% by 2020)

TRANSITION TO THE FRAMEWORK

## Water Conservation Long-Term Framework (Continued)

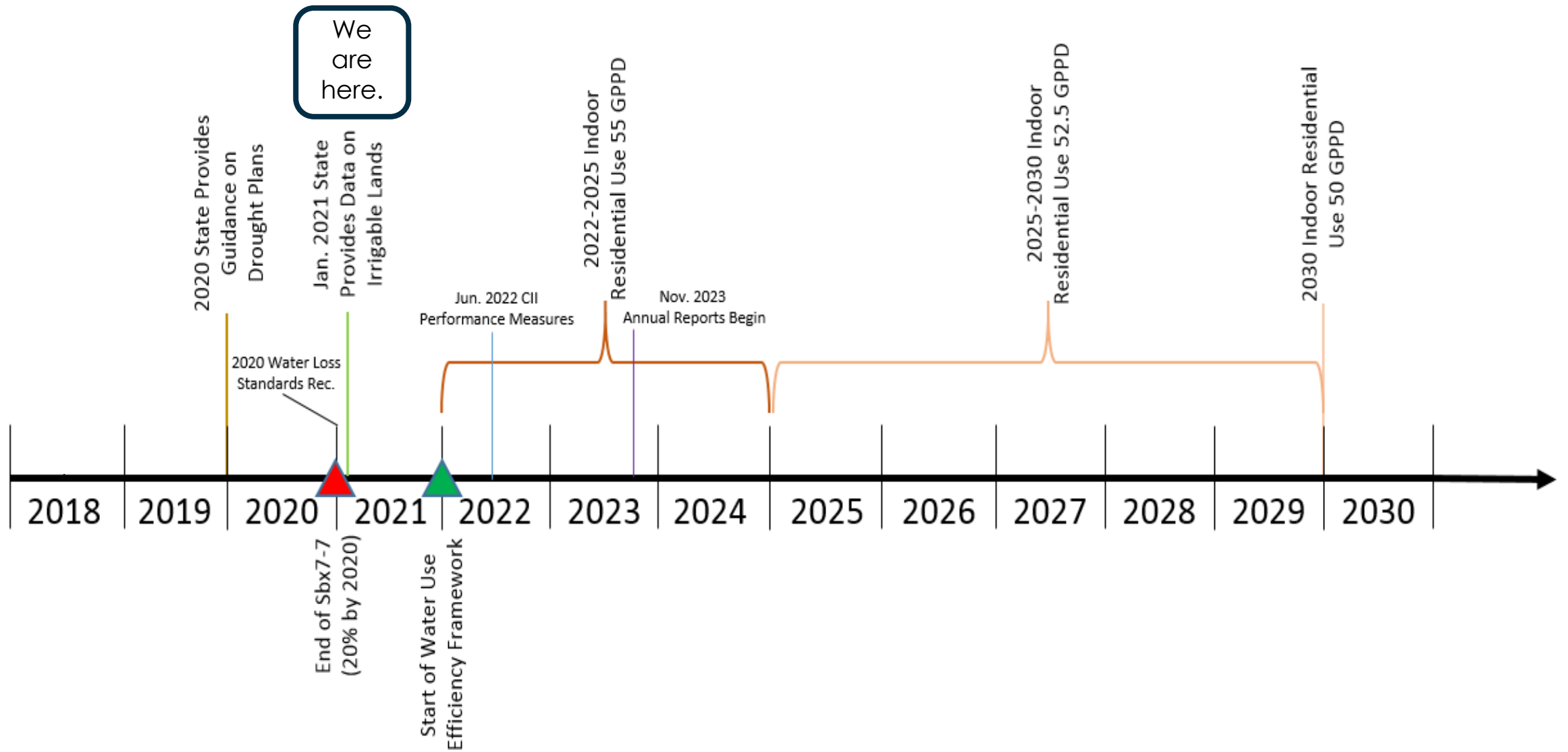
- ▶ Establishes Urban Water Use Objective (Beginning 2022)
  - ▶ Total Population X 55 Gallons per Person per Day
    - ▶ Reduced to 52.5 GPPD in 2025 and 50 GPPD in 2030
  - ▶ Irrigation Water Use (Total Residential & Dedicated Irrigated Areas)
  - ▶ Commercial, Industrial, Institutional Water Demands
  - ▶ Water Loss Targets and Standards
  - ▶ Bonus Incentives for Recycled Water Use (10% New, 15 Existing Facilities)



# TRANSITION TO THE FRAMEWORK



# Water Use Efficiency Framework – Beyond 2020 (AB 1668 and SB 606)



TRANSITION TO THE FRAMEWORK

## Transition to the Water Conservation Long-Term Framework

### Proposed Interim Strategy:

- ▶ **Maintain Status Quo (DSS Update in 2021)**
  - ▶ Conservation Program Portfolio Conservation Program Participation
- ▶ **Research Successes and Opportunities for Improvement**
  - ▶ Evaluation, Measurement, and Verification
  - ▶ Lawn Replacement Program – Rebranding and Reinvigoration
  - ▶ New Engagement Technologies
- ▶ **Continue Stakeholder Support and Input on Framework Methodologies**
- ▶ **Update Water Use Efficiency Plan**





**Matthew S. Dickens, MPA**  
**Sustainability Manager**  
**SCV Water**  
**[mdickens@scvwa.org](mailto:mdickens@scvwa.org)**

QUESTIONS OR COMMENTS

